



**The Timken Company**

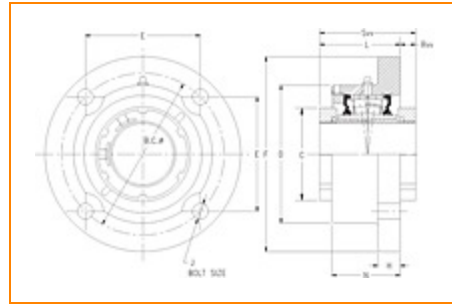
4500 Mt Pleasant St. NW

N. Canton, OH 44720

**Phone:** (234) 262-3000

**E-Mail:** [CustomerCAD@timken.com](mailto:CustomerCAD@timken.com) • **Web site:** [www.timken.com](http://www.timken.com)

## Part Number QVVFY11V200S, Double V-Lock Round Flange Block



[Specifications](#) | [Dimensions](#) | [Radial and Thrust Factors](#) | [Engineering Seal Speed](#) | [Engineering Bearing Attributes](#) | [Engineering Internal Radial Clearance](#)

### Specifications

**Engineering Group** Mounted Bearing

**Bearing Number** 22211

**Shaft Size** 2 in

**Shaft Size Type** Imperial

**Full Timken Part Number**

- QVVFY11V200SB
- QVVFY11V200SC
- QVVFY11V200SEB
- QVVFY11V200SEC
- QVVFY11V200SEM
- QVVFY11V200SEN
- QVVFY11V200SEO
- QVVFY11V200SET
- QVVFY11V200SM
- QVVFY11V200SN
- QVVFY11V200SO
- QVVFY11V200ST
- QVVFY11V200STHT



<b>Locking Style</b>	Double V-Lock
<b>Housing Construction</b>	Round Flange
<b>UPC Code</b>	0883450092814 0883450093446 0883450106184 0883450106382 0883450112475 0883450112666 0883450124294 0883450124966 0883450137164 0883450137294 0883450144285 0883450144650 0883450461924

## Dimensions

<b>Dimension BC</b>	5.75 in 146.1 mm
<b>Dimension C</b>	2.99 in 75.9 mm
<b>Dimension D</b>	4.54 in 115.3 mm
<b>Dimension E</b>	4.07 in 103.4 mm
<b>Dimension F</b>	7.0000 in 177.800 mm
<b>Dimension H</b>	0.75 in 19.1 mm
<b>Dimension J (Bolt Size)</b>	0.5 in 12 mm
<b>Dimension L Exp</b>	3.17 in 80.5 mm

<b>Dimension L Fix</b>	3.09 in 78.5 mm
<b>Dimension N</b>	2.3 in 58.4 mm
<b>Dimension RVV</b>	0.94 in 23.9 mm
<b>Dimension SVV</b>	4.02 in 102.1 mm

## Radial and Thrust Factors

<b>C0 - Static Load</b>	31900 lbf 142000 N
<b>C - Dynamic Load (Basic)</b>	31400 lbf 140000 N
<b>e - Geometry Factor</b>	0.23
<b>Y1 - Geometry Factor</b>	2.74
<b>Y2 - Geometry Factor</b>	4.08

## Engineering Seal Speed

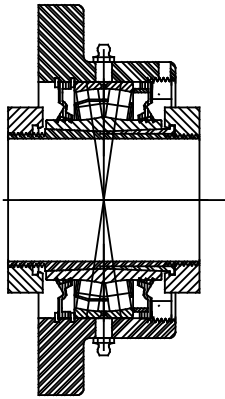
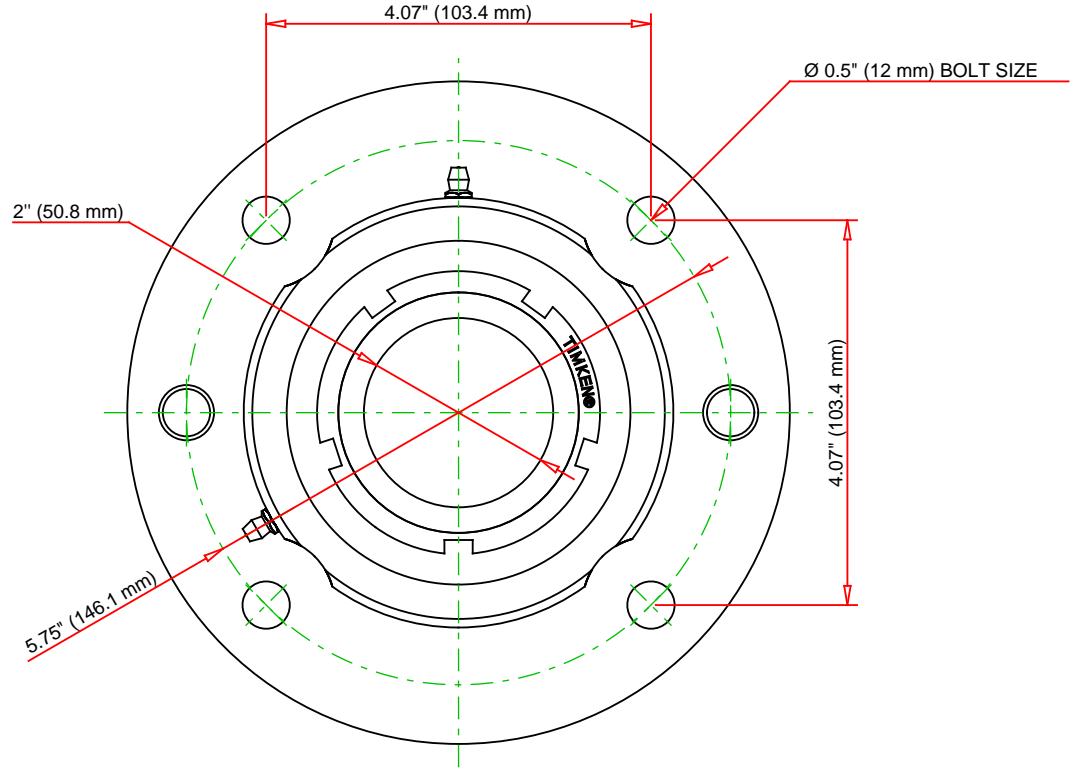
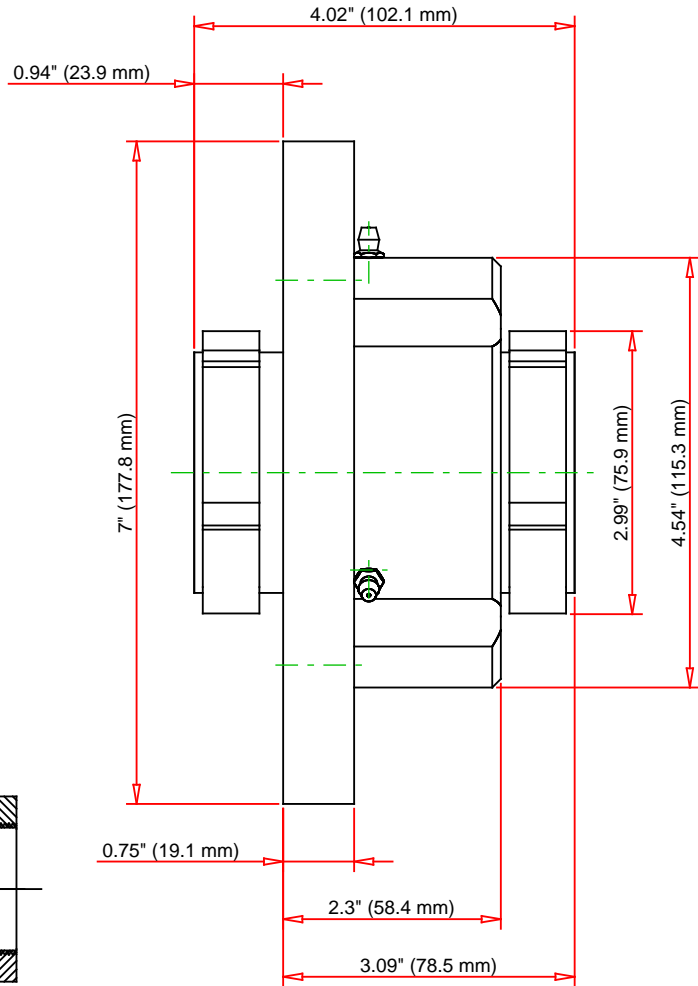
<b>Oil Lubrication - M/N Seal</b>	2200 rpm
<b>Oil Lubrication - T Seal</b>	3800 rpm
<b>Oil Lubrication - B/C/O Seal</b>	1800 rpm
<b>Grease Lubrication - M/N Seal</b>	2200 rpm
<b>Grease Lubrication - T Seal</b>	3200 rpm
<b>Grease Lubrication - B/C/O Seal</b>	1600 rpm

## Engineering Bearing Attributes

<b>Float</b>	0.050 in 1.270 mm
<b>Shaft Tolerance</b>	0.0015 in 0.038 mm

## Engineering Internal Radial Clearance

<b>Eng Internal Radial Clearance - Min</b>	0.0030
<b>Eng Internal Radial Clearance - Max</b>	0.0037
<b>Pre Install Clearance Min</b>	0.0030 in 0.075 mm
<b>Pre Install Clearance Max</b>	0.0037 in 0.094 mm



Note: Section View not to Scale

C - Dynamic Load	31400	lbf	140000	N
C0 - Static Load	31900	lbf	142000	N
Weight	12	lb	5.4	kg
Max. Speed T-Seals & Grease	3200	rpm		
Rad. Clearance - Max.	0.0037			

**TIMKEN**

THE TIMKEN COMPANY  
NORTH CANTON, OHIO USA

**QVVFY11V200S**  
Double V-Lock Round Flange Block

Every reasonable effort has been made to ensure the accuracy of the information contained in this writing, but no liability is accepted for errors, omissions or for any other reason.

**FOR DISCUSSION ONLY**