



The Timken Company

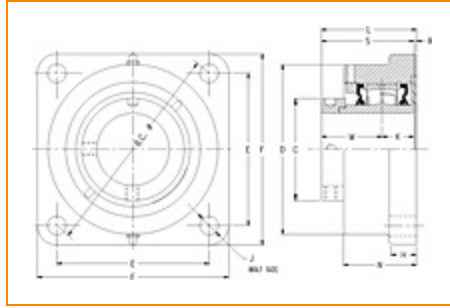
4500 Mt Pleasant St. NW

N. Canton, OH 44720

Phone: (234) 262-3000

E-Mail: CustomerCAD@timken.com • **Web site:** www.timken.com

Part Number QMF22J407S, Eccentric Four Bolt Square Flange Block



[Specifications](#) | [Dimensions](#) | [Radial and Thrust Factors](#) | [Engineering Seal Speed](#) | [Engineering Bearing Attributes](#) | [Engineering Internal Radial Clearance](#)

Specifications -

Engineering Group	Mounted Bearing
Bearing Number	22222
Shaft Size	4 7/16 in
Shaft Size Type	Imperial
Full Timken Part Number	QMF22J407SB QMF22J407SBT QMF22J407SC QMF22J407SEB QMF22J407SEC QMF22J407SEM QMF22J407SEN QMF22J407SEO QMF22J407SET QMF22J407SM QMF22J407SN



QMF22J407SO
 QMF22J407ST
 QMF22J407STHT

Locking Style

Eccentric

Housing Construction

Four-Bolt Square Flange

UPC Code

0883450068574
 0883450068581
 0883450068598
 0883450068604
 0883450068727
 0883450068734
 0883450068741
 0883450162500
 0883450254588
 0883450255066
 0883450356305
 0883450356312
 0883450499194
 0883450963633

Dimensions**Dimension BC**

12.38 in
 314.5 mm

Dimension C

6.3 in
 160 mm

Dimension D

10.11 in
 256.8 mm

Dimension E

8 3/4 in
 222.3 mm

Dimension F

10.88 in
 276.4 mm

Dimension H

1 1/2 in
 38.1 mm

Dimension J (Bolt Size)	0.875 in 24 mm
Dimension K	1.83 in 46.5 mm
Dimension L Exp	5.99 in 152.1 mm
Dimension L Fix	5.91 in 150.1 mm
Dimension M	3.7 in 94 mm
Dimension N	4.21 in 106.9 mm
Dimension R	0.38 in 9.7 mm
Dimension S	5.53 in 140.5 mm

Radial and Thrust Factors

C0 - Static Load	147000 lbf 653000 N
C - Dynamic Load (Basic)	125000 lbf 555000 N
e - Geometry Factor	0.26
Y1 - Geometry Factor	2.55
Y2 - Geometry Factor	3.80

Engineering Seal Speed

Oil Lubrication - M/N Seal	900 rpm
-----------------------------------	---------

Oil Lubrication - T Seal	1700 rpm
---------------------------------	----------

Oil Lubrication - B/C/O Seal	600 rpm
-------------------------------------	---------

Grease Lubrication - M/N Seal	900 rpm
--------------------------------------	---------

Grease Lubrication - T Seal	1200 rpm
------------------------------------	----------

Grease Lubrication - B/C/O Seal	600 rpm
--	---------

Engineering Bearing Attributes

Float	0.083 in 2.108 mm
--------------	----------------------

Shaft Tolerance	0.0050 in 0.127 mm
------------------------	-----------------------

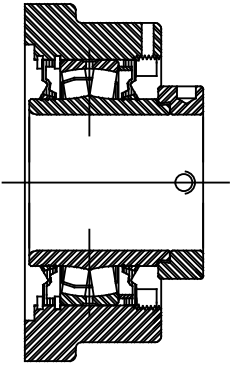
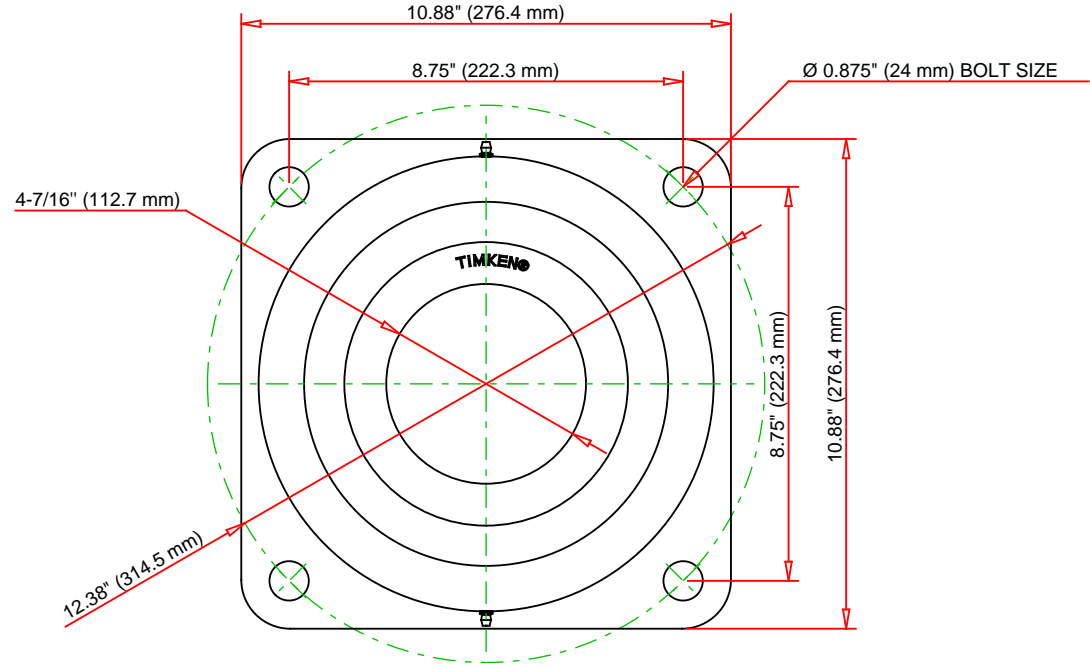
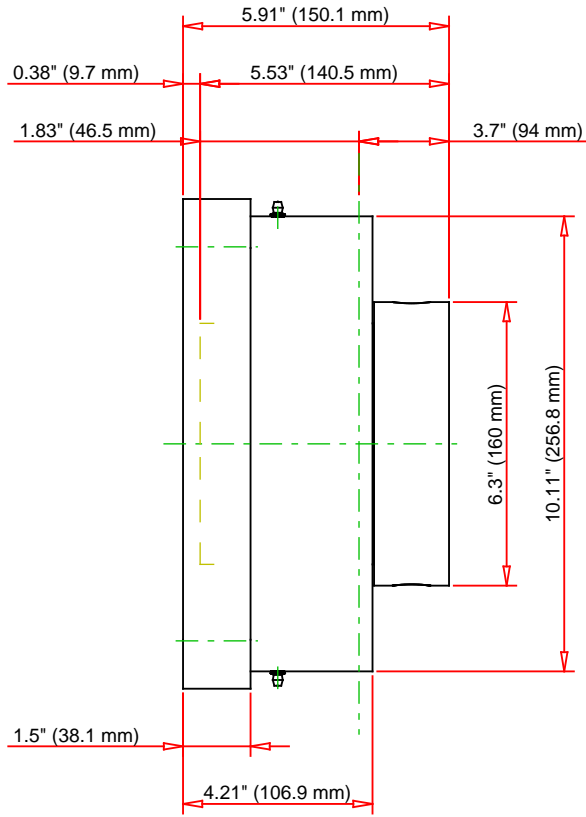
Engineering Internal Radial Clearance

Eng Internal Radial Clearance - Min	0.003
--	-------

Eng Internal Radial Clearance - Max	0.0047
--	--------

Pre Install Clearance Min	0.0030 in 0.075 mm
----------------------------------	-----------------------

Pre Install Clearance Max	0.0047 in 0.120 mm
----------------------------------	-----------------------



Note: Section View not to Scale

C - Dynamic Load	125000	lbf	555000	N
C0 - Static Load	147000	lbf	653000	N
Weight	63	lb	28.6	kg
Max. Speed T-Seals & Grease	1200	rpm		
Rad. Clearance - Max.	0.0047			

TIMKEN

THE TIMKEN COMPANY
NORTH CANTON, OHIO USA

QMF22J407S

Eccentric Four Bolt Square Flange
Block

Every reasonable effort has been made to ensure the accuracy of the information contained in this writing, but no liability is accepted for errors, omissions or for any other reason.

FOR DISCUSSION ONLY