


The Timken Company

4500 Mt Pleasant St. NW

N. Canton, OH 44720

Phone: (234) 262-3000

E-Mail: CustomerCAD@timken.com • **Web site:** www.timken.com

Part Number QACW13A060S, Single Concentric Piloted Flange Cartridge



[Specifications](#) | [Dimensions](#) | [Radial and Thrust Factors](#) | [Engineering Seal Speed](#) | [Engineering Bearing Attributes](#) | [Engineering Internal Radial Clearance](#)

Specifications

Engineering Group	Mounted Bearing
Bearing Number	22213
Shaft Size	60 mm
Shaft Size Type	Metric
Full Timken Part Number	QACW13A060SB QACW13A060SC QACW13A060SEB QACW13A060SEC QACW13A060SEM QACW13A060SEN QACW13A060SEO QACW13A060SET QACW13A060SM QACW13A060SMNG QACW13A060SN QACW13A060SO QACW13A060ST



Locking Style	Single Concentric
----------------------	-------------------

Housing Construction	Piloted Flange Cartridge
-----------------------------	--------------------------

UPC Code	0883450324663
	0883450324670
	0883450324687
	0883450324694
	0883450324700
	0883450324717
	0883450324724
	0883450324731
	0883450324748
	0883450324755
	0883450324762
0883450324779	
0883450494526	

Dimensions

Dimension BC	6-1/2 in 165.1 mm
---------------------	----------------------

Dimension B Exp	1.95 in 49.5 mm
------------------------	--------------------

Dimension B Fix	1.86 in 47.2 mm
------------------------	--------------------

Dimension C	3.8 in 96.5 mm
--------------------	-------------------

Dimension D	5.5 in 139.7 mm
--------------------	--------------------

Dimension E	4.6 in 116.8 mm
--------------------	--------------------

Dimension F	7.63 in 193.8 mm
--------------------	---------------------

Dimension G	5.5 in 139.7 mm
--------------------	--------------------

Dimension H	0.5 in 12.7 mm
Dimension J (Bolt Size)	0.5 in 12 mm
Dimension KA	1.24 in 31.5 mm
Dimension L Exp	3.63 in 92.2 mm
Dimension L Fix	3.55 in 90.2 mm
Dimension M	2.15 in 54.6 mm
Dimension N	1.69 in 42.9 mm
Dimension RA	0.17 in 4.3 mm
Dimension SA	3.39 in 86.1 mm

Radial and Thrust Factors

C0 - Static Load	48600 lbf 216000 N
C - Dynamic Load (Basic)	46400 lbf 206000 N
e - Geometry Factor	0.24
Y1 - Geometry Factor	2.79
Y2 - Geometry Factor	4.15

Engineering Seal Speed

Oil Lubrication - M/N Seal	1800 rpm
-----------------------------------	----------

Oil Lubrication - T Seal	3200 rpm
---------------------------------	----------

Oil Lubrication - B/C/O Seal	1500 rpm
-------------------------------------	----------

Grease Lubrication - M/N Seal	1800 rpm
--------------------------------------	----------

Grease Lubrication - T Seal	2800 rpm
------------------------------------	----------

Grease Lubrication - B/C/O Seal	1500 rpm
--	----------

Engineering Bearing Attributes

Float	0.083 in 2.108 mm
--------------	----------------------

Shaft Tolerance	0.0015 in 0.038 mm
------------------------	-----------------------

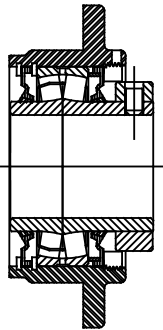
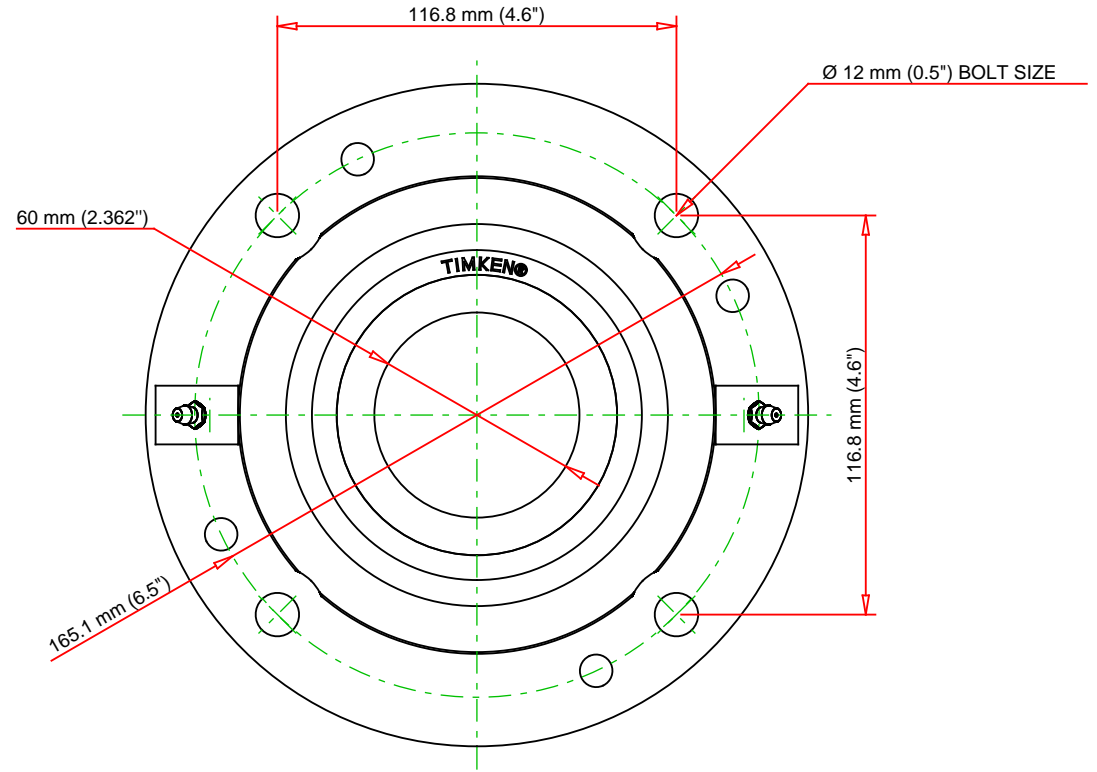
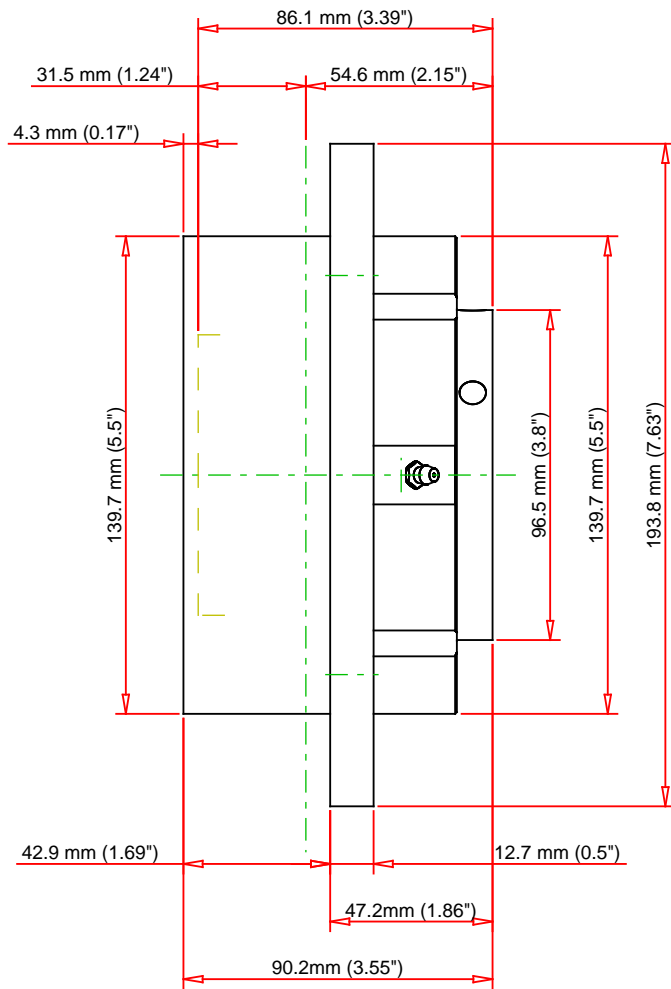
Engineering Internal Radial Clearance

Eng Internal Radial Clearance - Min	0.0016
--	--------

Eng Internal Radial Clearance - Max	0.0026
--	--------

Pre Install Clearance Min	0.0016 in 0.040 mm
----------------------------------	-----------------------

Pre Install Clearance Max	0.0026 in 0.065 mm
----------------------------------	-----------------------



Note: Section View not to Scale

C - Dynamic Load	46400	lbf	206000	N
C0 - Static Load	48600	lbf	216000	N
Weight	16	lb	7.3	kg
Max. Speed T-Seals & Grease	2800	rpm		
Rad. Clearance - Max.	0.0026			

TIMKEN

THE TIMKEN COMPANY
NORTH CANTON, OHIO USA

QACW13A060S

Single Concentric Piloted Flange
Cartridge

Every reasonable effort has been made to ensure the accuracy of the information contained in this writing, but no liability is accepted for errors, omissions or for any other reason.

FOR DISCUSSION ONLY