


The Timken Company

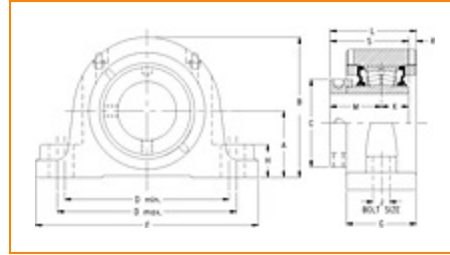
4500 Mt Pleasant St. NW

N. Canton, OH 44720

Phone: (234) 262-3000

E-Mail: CustomerCAD@timken.com • **Web site:** www.timken.com

Part Number QMSN18J080S, Eccentric Two-Bolt Pillow Block



[Specifications](#) | [Dimensions](#) | [Radial and Thrust Factors](#) | [Engineering Seal Speed](#) | [Engineering Bearing Attributes](#) | [Engineering Internal Radial Clearance](#)

Specifications

Engineering Group Mounted Bearing

Bearing Number 22218

Shaft Size 80 mm

Shaft Size Type Metric

Full Timken Part Number

- QMSN18J080SB
- QMSN18J080SC
- QMSN18J080SEB
- QMSN18J080SEC
- QMSN18J080SEM
- QMSN18J080SEN
- QMSN18J080SEO
- QMSN18J080SET
- QMSN18J080SM
- QMSN18J080SN
- QMSN18J080SO
- QMSN18J080ST



QMSN18J080STNG

Locking Style

Eccentric

Housing Construction

Two-Bolt Pillow Block

UPC Code

0883450098021
0883450098038
0883450098052
0883450098069
0883450098076
0883450098083
0883450098090
0883450098106
0883450161015
0883450161374
0883450253673
0883450254069
0883450476645

Dimensions**Dimension A**

3.94 in
100 mm

Dimension B

7.87 in
200 mm

Dimension C

4.76 in
121 mm

Dimension D Min

10.98 in
279 mm

Dimension D Max

11.5 in
292 mm

Dimension F

13.58 in
345 mm

Dimension G

3.39 in
86 mm

Dimension H	1.54 in 39 mm
Dimension J (Bolt Size)	0.75 in 20 mm
Dimension K	1.46 in 37 mm
Dimension L	4.29 in 109 mm
Dimension M	2.6 in 66 mm
Dimension R	0.28 in 7 mm
Dimension S	4.06 in 103 mm

Radial and Thrust Factors

C0 - Static Load	87200 lbf 388000 N
C - Dynamic Load (Basic)	79700 lbf 355000 N
e - Geometry Factor	0.23
Y1 - Geometry Factor	2.90
Y2 - Geometry Factor	4.31

Engineering Seal Speed

Oil Lubrication - M/N Seal	1400 rpm
Oil Lubrication - T Seal	2400 rpm
Oil Lubrication - B/C/O Seal	1000 rpm

Grease Lubrication - M/N Seal	1400 rpm
--------------------------------------	----------

Grease Lubrication - T Seal	2000 rpm
------------------------------------	----------

Grease Lubrication - B/C/O Seal	1000 rpm
--	----------

Engineering Bearing Attributes

Float	0.083 in 2.108 mm
--------------	----------------------

Shaft Tolerance	0.0030 in 0.076 mm
------------------------	-----------------------

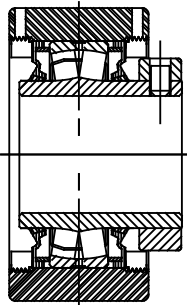
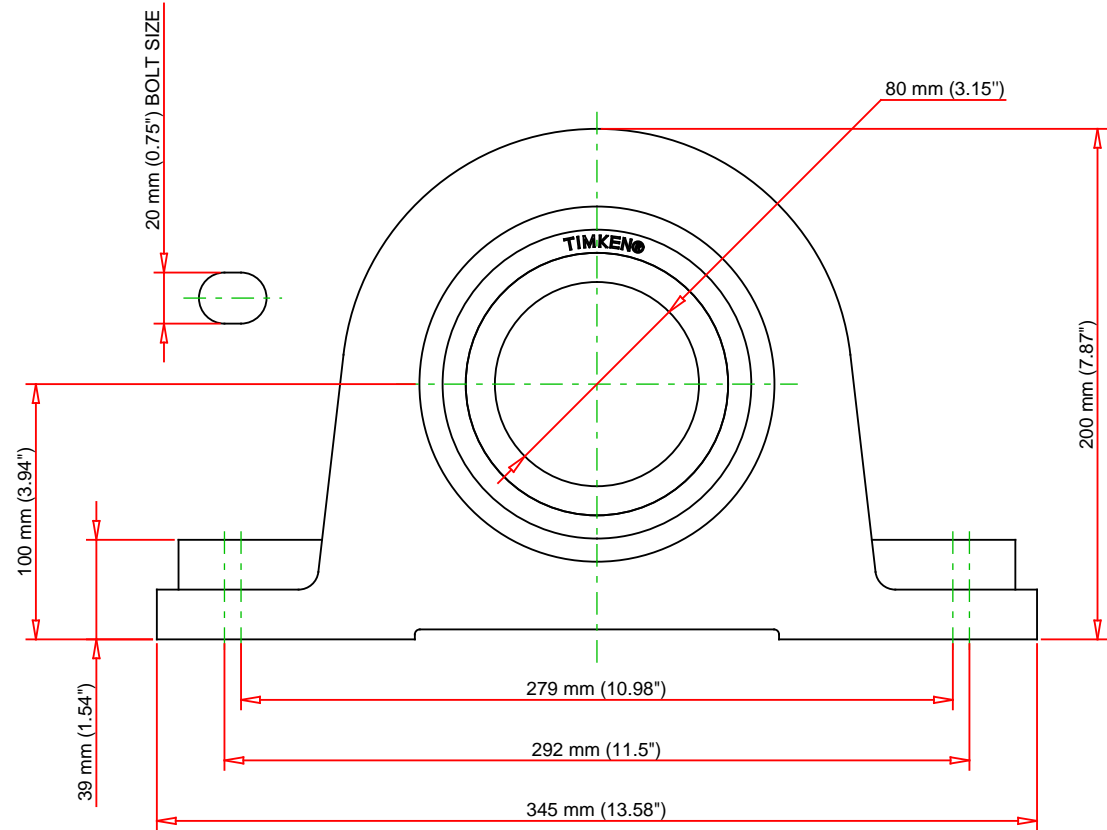
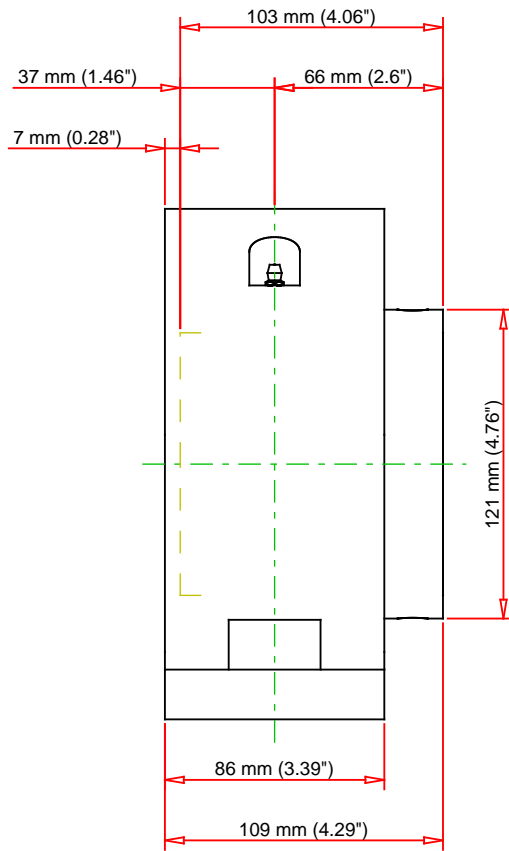
Engineering Internal Radial Clearance

Eng Internal Radial Clearance - Min	0.0024
--	--------

Eng Internal Radial Clearance - Max	0.0039
--	--------

Pre Install Clearance Min	0.0024 in 0.060 mm
----------------------------------	-----------------------

Pre Install Clearance Max	0.0039 in 0.100 mm
----------------------------------	-----------------------



Note: Section View not to Scale

C - Dynamic Load	79700	lbf	355000	N
C0 - Static Load	87200	lbf	388000	N
Weight	56	lb	25.5	kg
Max. Speed T-Seals & Grease	2000	rpm		
Rad. Clearance - Max.	0.0039			

TIMKEN

THE TIMKEN COMPANY
NORTH CANTON, OHIO USA

QMSN18J080S
Eccentric Two-Bolt Pillow Block

Every reasonable effort has been made to ensure the accuracy of the information contained in this writing, but no liability is accepted for errors, omissions or for any other reason.

FOR DISCUSSION ONLY