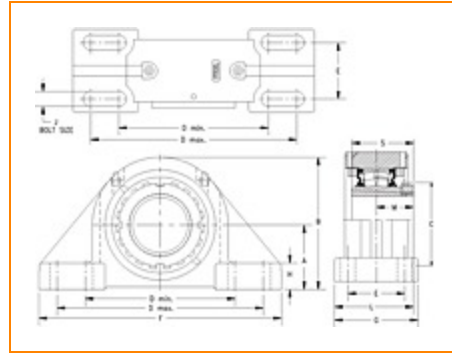
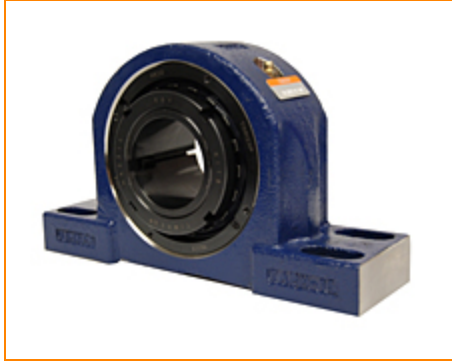


TIMKEN**The Timken Company**

4500 Mt Pleasant St. NW

N. Canton, OH 44720

Phone: (234) 262-3000**E-Mail:** CustomerCAD@timken.com • **Web site:** www.timken.com**Part Number TAPK26K407S, Tapered Adapter Four-Bolt Pillow Block**

[Specifications](#) | [Dimensions](#) | [Radial and Thrust Factors](#) | [Engineering Seal Speed](#) | [Engineering Bearing Attributes](#) | [Engineering Internal Radial Clearance](#)

Specifications

Engineering Group Mounted Bearing

Bearing Number 22226

Shaft Size 4 7/16 in

Shaft Size Type Imperial

Full Timken Part Number

- TAPK26K407SB
- TAPK26K407SC
- TAPK26K407SEB
- TAPK26K407SEC
- TAPK26K407SEM
- TAPK26K407SEN
- TAPK26K407SEO
- TAPK26K407SET
- TAPK26K407SM
- TAPK26K407SN
- TAPK26K407SO
- TAPK26K407ST



Locking Style	Tapered Adapter
Housing Construction	Four-Bolt Pillow Block
UPC Code	0883450085540 0883450085618 0883450085649 0883450085717 0883450085748 0883450132022 0883450132039 0883450132046 0883450132053 0883450199223 0883450276665 0883450276863

Dimensions

Dimension A	6.125 in 155.6 mm
Dimension B	11.15 in 283.2 mm
Dimension C	6.5 in 165.1 mm
Dimension D Min	15.25 in 387.4 mm
Dimension D Max	16.75 in 425.5 mm
Dimension E	4-1/4 in 108 mm
Dimension F	20.25 in 514.4 mm
Dimension G	6.75 in 171.5 mm

Dimension H	2 in 50.8 mm
Dimension J (Bolt Size)	1.125 in 24 mm
Dimension L	6.2 in 157.5 mm
Dimension M	2.83 in 71.9 mm
Dimension S	4.76 in 120.9 mm

Radial and Thrust Factors

C0 - Static Load	212000 lbf 945000 N
C - Dynamic Load (Basic)	170000 lbf 757000 N
e - Geometry Factor	0.26
Y1 - Geometry Factor	2.62
Y2 - Geometry Factor	3.9

Engineering Seal Speed

Oil Lubrication - M/N Seal	700 rpm
Oil Lubrication - T Seal	1500 rpm
Oil Lubrication - B/C/O Seal	400 rpm
Grease Lubrication - M/N Seal	700 rpm
Grease Lubrication - T Seal	1000 rpm
Grease Lubrication - B/C/O Seal	400 rpm

Engineering Bearing Attributes

Float	0.083 in 2.108 mm
Shaft Tolerance	0.0040 in 0.102 mm

Engineering Internal Radial Clearance

Pre Install Clearance Min	0.0063 in 0.160 mm
Pre Install Clearance Max	0.0079 in 0.201 mm

