



The Timken Company

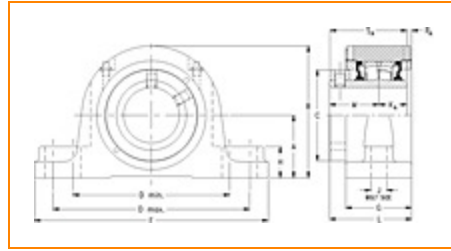
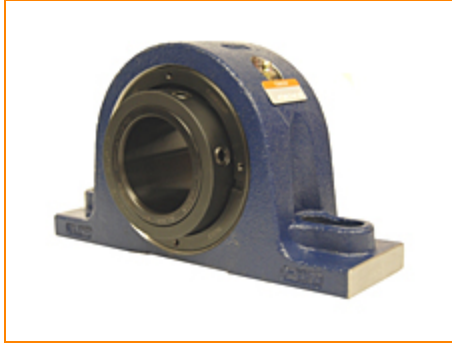
4500 Mt Pleasant St. NW

N. Canton, OH 44720

Phone: (234) 262-3000

E-Mail: CustomerCAD@timken.com • **Web site:** www.timken.com

Part Number QAPL09A111S, Single Concentric Two-Bolt Pillow Block



[Specifications](#) | [Dimensions](#) | [Radial and Thrust Factors](#) | [Engineering Seal Speed](#) | [Engineering Bearing Attributes](#) | [Engineering Internal Radial Clearance](#)

Specifications

Engineering Group Mounted Bearing

Bearing Number 22209

Shaft Size 1 11/16 in

Shaft Size Type Imperial

Full Timken Part Number

- QAPL09A111SB
- QAPL09A111SC
- QAPL09A111SEB
- QAPL09A111SEC
- QAPL09A111SEM
- QAPL09A111SEN
- QAPL09A111SEO
- QAPL09A111SET
- QAPL09A111SM
- QAPL09A111SN
- QAPL09A111SO



QAPL09A111ST

Locking Style

Single Concentric

Housing Construction

Two-Bolt Pillow Block

UPC Code

883450963015
 883450963022
 883450963039
 883450963046
 883450963053
 883450963060
 883450963077
 883450963084
 883450963091
 883450963107
 883450963114
 883450963121

Dimensions**Dimension A**

2.13 in
 54.1 mm

Dimension B

4.13 in
 104.9 mm

Dimension C

2.63 in
 66.8 mm

Dimension D Min

5.25 in
 133.4 mm

Dimension D Max

5.75 in
 146.1 mm

Dimension F

7.13 in
 181.1 mm

Dimension G

2.37 in
 60.2 mm

Dimension H

1-1/4 in
 31.8 mm

Dimension J (Bolt Size)	0.5 in 12 mm
Dimension KA	1 in 25.4 mm
Dimension L	3.06 in 78 mm
Dimension M	1.88 in 47.8 mm
Dimension RA	0.19 in 4.8 mm
Dimension SA	2.88 in 73.2 mm

Radial and Thrust Factors

C0 - Static Load	24200 lbf 108000 N
C - Dynamic Load (Basic)	24500 lbf 109000 N
e - Geometry Factor	0.26
Y1 - Geometry Factor	2.64
Y2 - Geometry Factor	3.93

Engineering Seal Speed

Oil Lubrication - M/N Seal	2700 rpm
Oil Lubrication - T Seal	4500 rpm
Oil Lubrication - B/C/O Seal	1950 rpm
Grease Lubrication - M/N Seal	2700 rpm

Grease Lubrication - T Seal	4000 rpm
------------------------------------	----------

Grease Lubrication - B/C/O Seal	1950 rpm
--	----------

Engineering Bearing Attributes

Float	0.050 in 1.270 mm
--------------	----------------------

Shaft Tolerance	0.0015 in 0.038 mm
------------------------	-----------------------

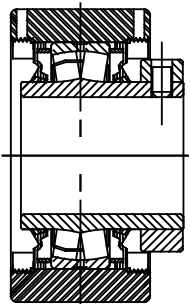
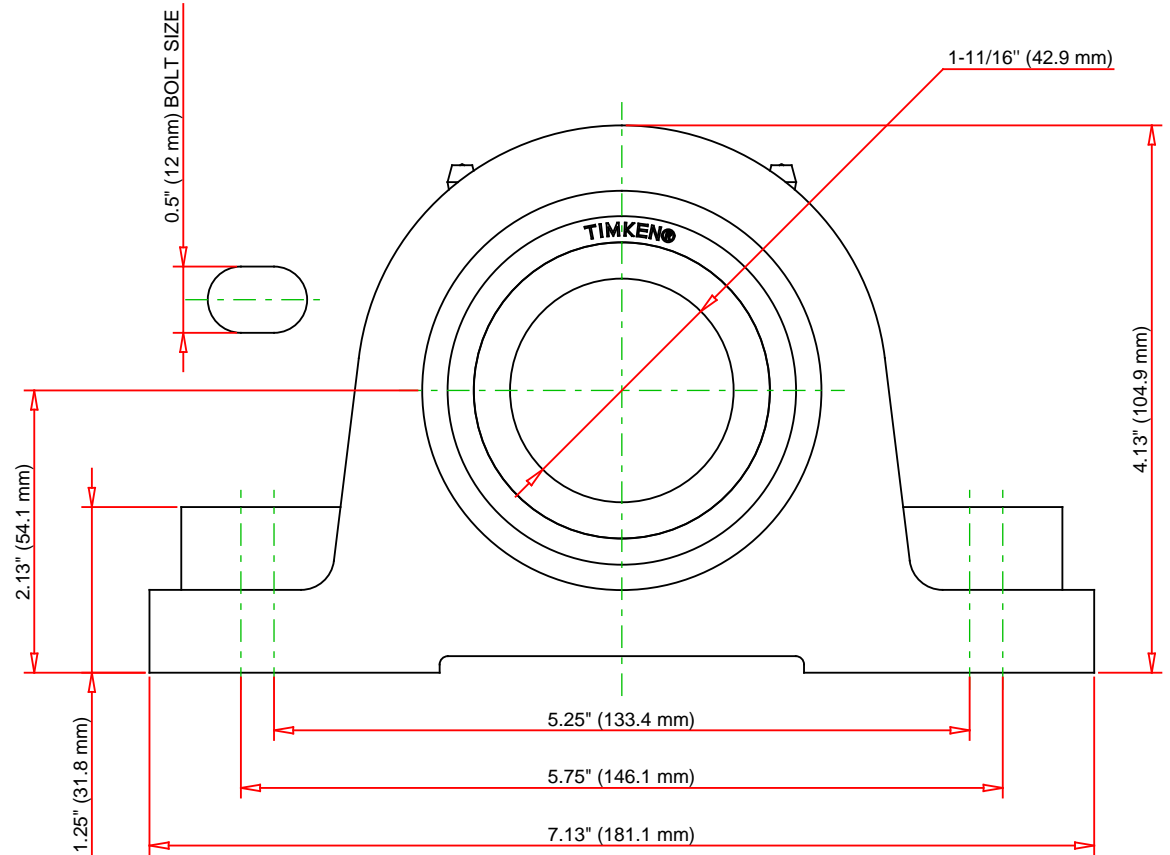
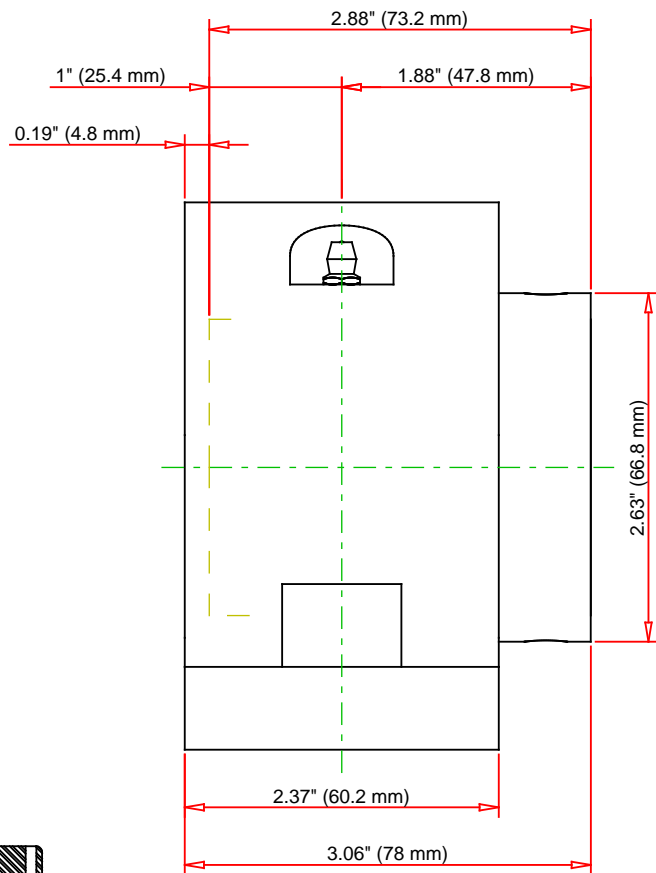
Engineering Internal Radial Clearance

Eng Internal Radial Clearance - Min	0.0014
--	--------

Eng Internal Radial Clearance - Max	0.0022
--	--------

Pre Install Clearance Min	0.0014 in 0.035 mm
----------------------------------	-----------------------

Pre Install Clearance Max	0.0022 in 0.055 mm
----------------------------------	-----------------------



Note: Section View not to Scale

C - Dynamic Load	24500	lbf	109000	N
C0 - Static Load	24200	lbf	108000	N
Weight	10	lb	4.5	kg
Max. Speed T-Seals & Grease	4000	rpm		
Rad. Clearance - Max.	0.0022			

TIMKEN

THE TIMKEN COMPANY
NORTH CANTON, OHIO USA

QAPL09A111S
Single Concentric Two-Bolt Pillow
Block

Every reasonable effort has been made to ensure the accuracy of the information contained in this writing, but no liability is accepted for errors, omissions or for any other reason.

FOR DISCUSSION ONLY