



The Timken Company

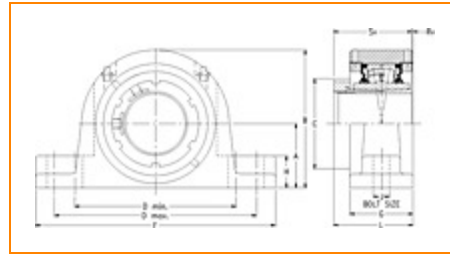
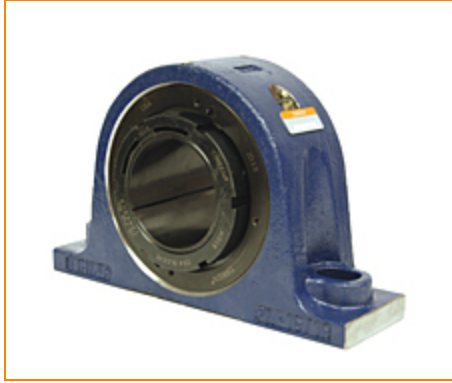
4500 Mt Pleasant St. NW

N. Canton, OH 44720

Phone: (234) 262-3000

E-Mail: CustomerCAD@timken.com • **Web site:** www.timken.com

Part Number QVPA13V203S, Single V-Lock Two-Bolt Pillow Block



[Specifications](#) | [Dimensions](#) | [Radial and Thrust Factors](#) | [Engineering Seal Speed](#) | [Engineering Bearing Attributes](#) | [Engineering Internal Radial Clearance](#)

Specifications

Engineering Group Mounted Bearing

Bearing Number 22213

Shaft Size 2 3/16 in

Shaft Size Type Imperial

Full Timken Part Number

- QVPA13V203SB
- QVPA13V203SC
- QVPA13V203SEB
- QVPA13V203SEC
- QVPA13V203SEM
- QVPA13V203SEN
- QVPA13V203SEO
- QVPA13V203SET
- QVPA13V203SM
- QVPA13V203SN
- QVPA13V203SO
- QVPA13V203ST



Locking Style	Single V-Lock
Housing Construction	Two-Bolt Pillow Block
UPC Code	0883450146319 0883450146463 0883450151818 0883450151962 0883450164498 0883450167543 0883450182027 0883450183017 0883450257176 0883450259590 0883450281775 0883450281928

Dimensions

Dimension A	3 in 76.2 mm
Dimension B	5.95 in 151.1 mm
Dimension C	3.16 in 80.3 mm
Dimension D Min	7.2 in 182.9 mm
Dimension D Max	9.2 in 233.7 mm
Dimension F	10.31 in 261.9 mm
Dimension G	2.7 in 68.6 mm
Dimension H	1.23 in 31.2 mm

Dimension J (Bolt Size)	0.625 in 16 mm
--------------------------------	-------------------

Dimension L	3.36 in 85.3 mm
--------------------	--------------------

Dimension RV	0.08 in 2 mm
---------------------	-----------------

Dimension SV	3.36 in 85.3 mm
---------------------	--------------------

Radial and Thrust Factors

C0 - Static Load	48600 lbf 216000 N
-------------------------	-----------------------

C - Dynamic Load (Basic)	46400 lbf 206000 N
---------------------------------	-----------------------

e - Geometry Factor	0.24
----------------------------	------

Y1 - Geometry Factor	2.79
-----------------------------	------

Y2 - Geometry Factor	4.15
-----------------------------	------

Engineering Seal Speed

Oil Lubrication - M/N Seal	1800 rpm
-----------------------------------	----------

Oil Lubrication - T Seal	3200 rpm
---------------------------------	----------

Oil Lubrication - B/C/O Seal	1500 rpm
-------------------------------------	----------

Grease Lubrication - M/N Seal	1800 rpm
--------------------------------------	----------

Grease Lubrication - T Seal	2800 rpm
------------------------------------	----------

Grease Lubrication - B/C/O Seal	1500 rpm
--	----------

Engineering Bearing Attributes

Float	0.083 in 2.108 mm
--------------	----------------------

Shaft Tolerance	0.0015 in 0.038 mm
------------------------	-----------------------

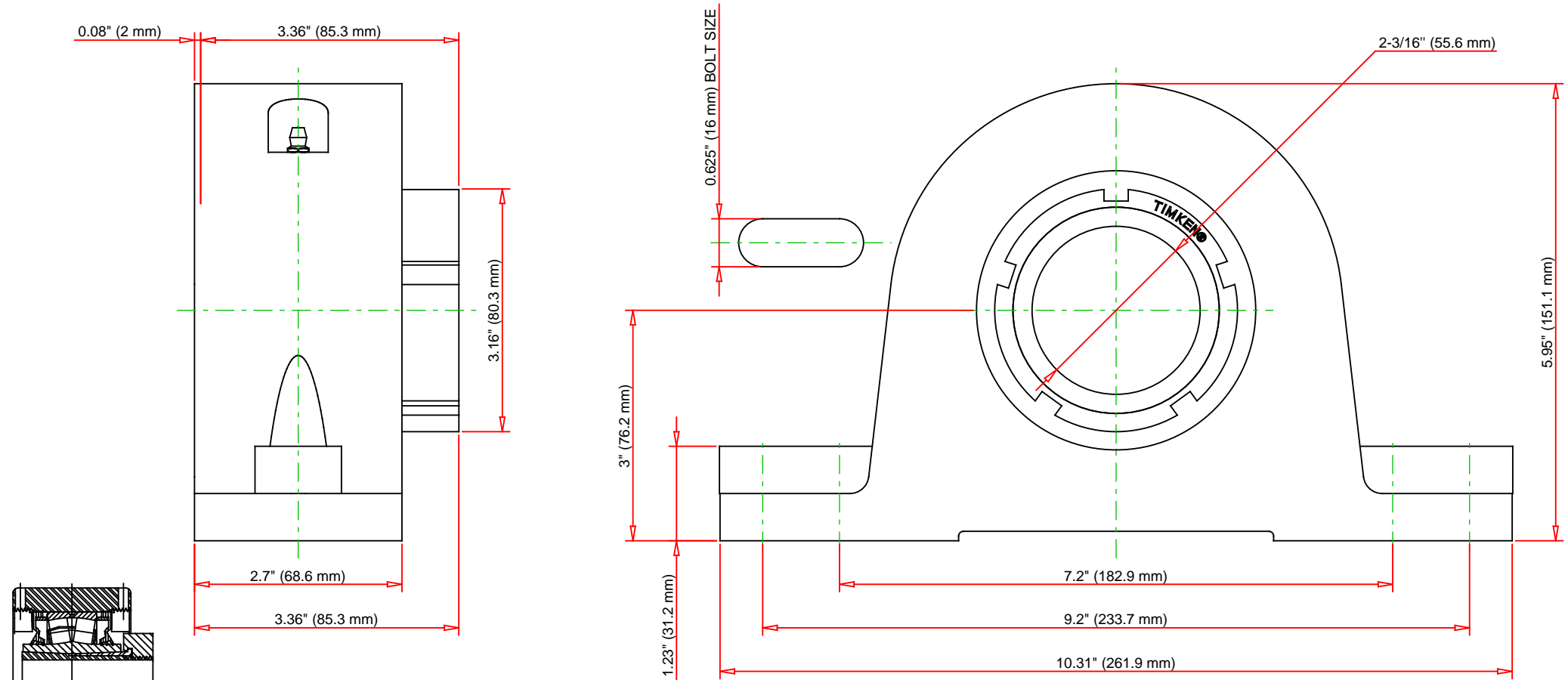
Engineering Internal Radial Clearance

Eng Internal Radial Clearance - Min	0.0030
--	--------

Eng Internal Radial Clearance - Max	0.0037
--	--------

Pre Install Clearance Min	0.0030 in 0.075 mm
----------------------------------	-----------------------

Pre Install Clearance Max	0.0037 in 0.094 mm
----------------------------------	-----------------------



Note: Section View not to Scale

C - Dynamic Load	46400	lbf	206000	N
C0 - Static Load	48600	lbf	216000	N
Weight	23	lb	10.4	kg
Max. Speed T-Seals & Grease	2800	rpm		
Rad. Clearance - Max.	0.0037			

TIMKEN

THE TIMKEN COMPANY
NORTH CANTON, OHIO USA

QVPA13V203S
Single V-Lock Two-Bolt Pillow Block

Every reasonable effort has been made to ensure the accuracy of the information contained in this writing, but no liability is accepted for errors, omissions or for any other reason.

FOR DISCUSSION ONLY