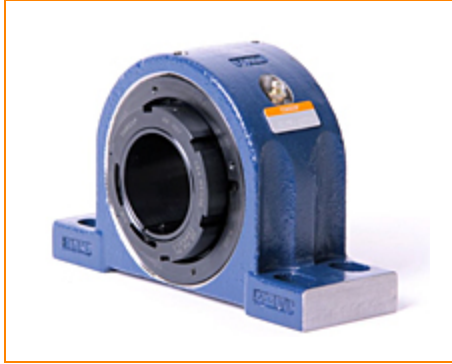



**The Timken Company**

4500 Mt Pleasant St. NW

N. Canton, OH 44720

**Phone:** (234) 262-3000

**E-Mail:** [CustomerCAD@timken.com](mailto:CustomerCAD@timken.com) • **Web site:** [www.timken.com](http://www.timken.com)
**Part Number QVPF16V215S, Single V-Lock Four-Bolt Pillow Block**


[Specifications](#) | [Dimensions](#) | [Radial and Thrust Factors](#) | [Engineering Seal Speed](#) | [Engineering Bearing Attributes](#) | [Engineering Internal Radial Clearance](#)

**Specifications**

<b>Engineering Group</b>	Mounted Bearing
<b>Bearing Number</b>	22216
<b>Shaft Size</b>	2 15/16 in
<b>Shaft Size Type</b>	Imperial
<b>Full Timken Part Number</b>	QVPF16V215SB QVPF16V215SC QVPF16V215SEB QVPF16V215SEC QVPF16V215SEM QVPF16V215SEN QVPF16V215SEO QVPF16V215SET QVPF16V215SM QVPF16V215SN QVPF16V215SO QVPF16V215ST



<b>Locking Style</b>	Single V-Lock
<b>Housing Construction</b>	Four-Bolt Pillow Block
<b>UPC Code</b>	883450049559 883450049566 883450112093 883450112130 883450173636 883450203647 883450204026 883450216067 883450216449 883450228480 883450228862 883450296670

## Dimensions

<b>Dimension A</b>	3.25 in 82.6 mm
<b>Dimension B</b>	6.59 in 167.4 mm
<b>Dimension C</b>	4.19 in 106.4 mm
<b>Dimension D Min</b>	7.6 in 193 mm
<b>Dimension D Max</b>	9.1 in 231.1 mm
<b>Dimension E</b>	1.88 in 47.8 mm
<b>Dimension F</b>	10.44 in 265.2 mm
<b>Dimension G</b>	3.13 in 79.5 mm

<b>Dimension H</b>	1.29 in 32.8 mm
--------------------	--------------------

<b>Dimension J (Bolt Size)</b>	0.625 in 16 mm
--------------------------------	-------------------

<b>Dimension L</b>	3.66 in 93 mm
--------------------	------------------

<b>Dimension RV</b>	0.35 in 8.9 mm
---------------------	-------------------

<b>Dimension SV</b>	3.23 in 89 mm
---------------------	------------------

## Radial and Thrust Factors

<b>C0 - Static Load</b>	62500 lbf 278000 N
-------------------------	-----------------------

<b>C - Dynamic Load (Basic)</b>	57200 lbf 254000 N
---------------------------------	-----------------------

<b>e - Geometry Factor</b>	0.22
----------------------------	------

<b>Y1 - Geometry Factor</b>	3.14
-----------------------------	------

<b>Y2 - Geometry Factor</b>	4.67
-----------------------------	------

## Engineering Seal Speed

<b>Oil Lubrication - M/N Seal</b>	1500 rpm
-----------------------------------	----------

<b>Oil Lubrication - T Seal</b>	2650 rpm
---------------------------------	----------

<b>Oil Lubrication - B/C/O Seal</b>	1200 rpm
-------------------------------------	----------

<b>Grease Lubrication - M/N Seal</b>	1500 rpm
--------------------------------------	----------

<b>Grease Lubrication - T Seal</b>	2200 rpm
------------------------------------	----------

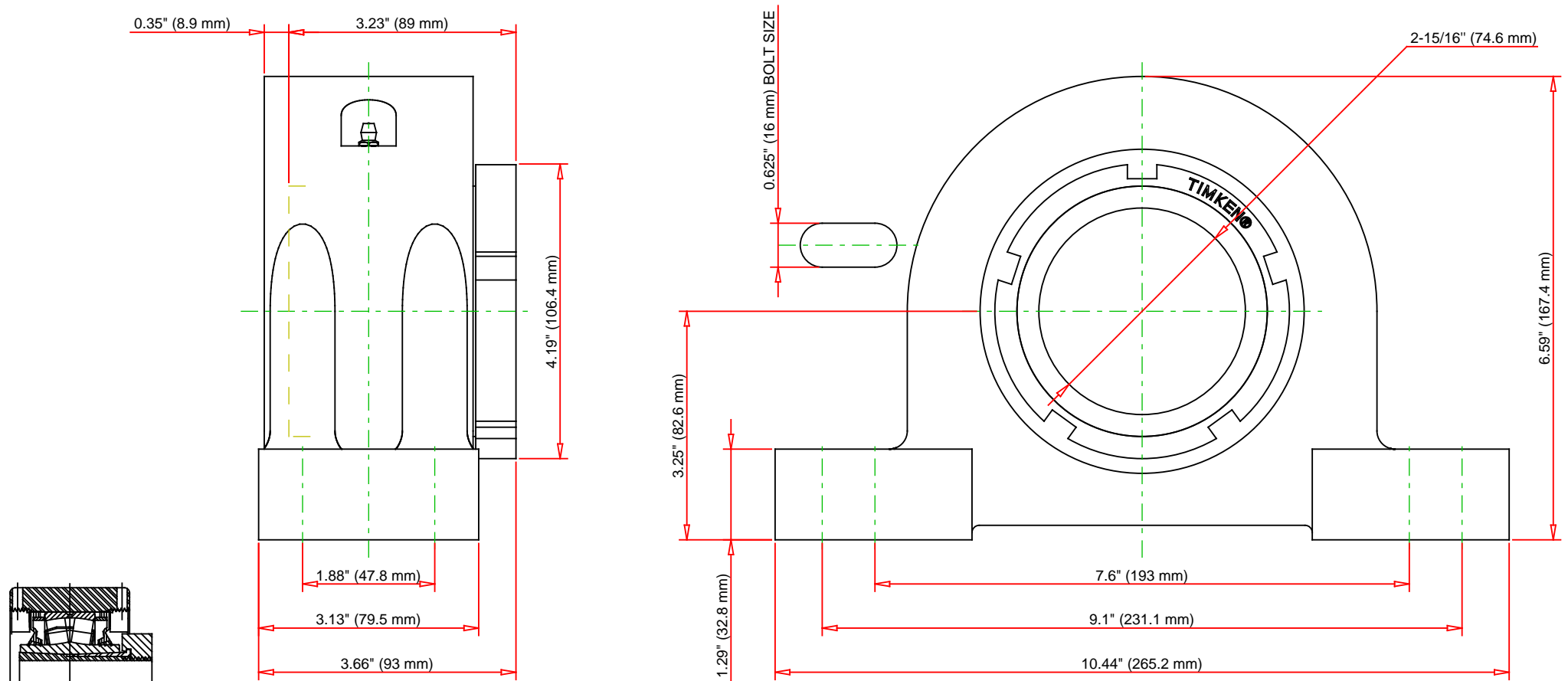
<b>Grease Lubrication - B/C/O Seal</b>	1150 rpm
--	----------

## Engineering Bearing Attributes

<b>Float</b>	0.083 in 2.108 mm
<b>Shaft Tolerance</b>	0.0020 in 0.051 mm

## Engineering Internal Radial Clearance

<b>Eng Internal Radial Clearance - Min</b>	0.0037
<b>Eng Internal Radial Clearance - Max</b>	0.0047
<b>Pre Install Clearance Min</b>	0.0037 in 0.095 mm
<b>Pre Install Clearance Max</b>	0.0047 in 0.120 mm



Note: Section View not to Scale

C - Dynamic Load	57200	lbf	254000	N
C0 - Static Load	62500	lbf	278000	N
Weight	27	lb	12.2	kg
Max. Speed T-Seals & Grease	2200	rpm		
Rad. Clearance - Max.	0.0047			

**TIMKEN**

THE TIMKEN COMPANY  
NORTH CANTON, OHIO USA

**QVPF16V215S**  
Single V-Lock Four-Bolt Pillow Block

Every reasonable effort has been made to ensure the accuracy of the information contained in this writing, but no liability is accepted for errors, omissions or for any other reason.

**FOR DISCUSSION ONLY**