

TIMKEN**The Timken Company**

4500 Mt Pleasant St. NW

N. Canton, OH 44720

Phone: (234) 262-3000**E-Mail:** CustomerCAD@timken.com • **Web site:** www.timken.com**Part Number QAACW13A207S, Double Concentric Piloted Flange Cartridge**

[Specifications](#) | [Dimensions](#) | [Radial and Thrust Factors](#) | [Engineering Seal Speed](#) | [Engineering Bearing Attributes](#) | [Engineering Internal Radial Clearance](#)

Specifications**Engineering Group** Mounted Bearing**Bearing Number** 22213**Shaft Size** 2 7/16 in**Shaft Size Type** Imperial

Full Timken Part Number

QAACW13A207SB
 QAACW13A207SC
 QAACW13A207SEB
 QAACW13A207SEC
 QAACW13A207SEM
 QAACW13A207SEN
 QAACW13A207SEO
 QAACW13A207SET
 QAACW13A207SM
 QAACW13A207SN
 QAACW13A207SO



QAACW13A207ST
QAACW13A207STXY

Locking Style Double Concentric

Housing Construction Piloted Flange Cartridge

UPC Code

0883450017206
0883450017213
0883450017237
0883450017244
0883450017251
0883450017268
0883450017275
0883450017282
0883450194181
0883450194365
0883450271356
0883450271530
0883450495455

Dimensions

Dimension BC

6-1/2 in
165.1 mm

Dimension C

3.8 in
96.5 mm

Dimension D

5.5 in
139.7 mm

Dimension E

4.6 in
116.8 mm

Dimension B Exp

1.95 in
49.5 mm

Dimension B Fix

1.86 in
47.2 mm

Dimension F

7.63 in
193.8 mm

Dimension H	0.5 in 12.7 mm
Dimension J (Bolt Size)	0.5 in 12 mm
Dimension M	2.15 in 54.6 mm
Dimension L Exp	3.63 in 92.2 mm
Dimension L Fix	3.55 in 90.2 mm
Dimension RAA	0.74 in 18.8 mm
Dimension SAA	4.29 in 109 mm
Dimension G	5.5 in 139.7 mm
Dimension N	1.69 in 42.9 mm

Radial and Thrust Factors

C0 - Static Load	48600 lbf 216000 N
C - Dynamic Load (Basic)	46400 lbf 206000 N
e - Geometry Factor	0.24
Y1 - Geometry Factor	2.79
Y2 - Geometry Factor	4.15

Engineering Seal Speed

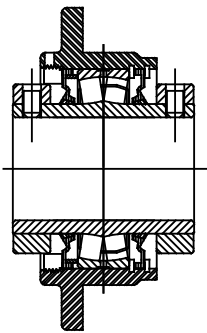
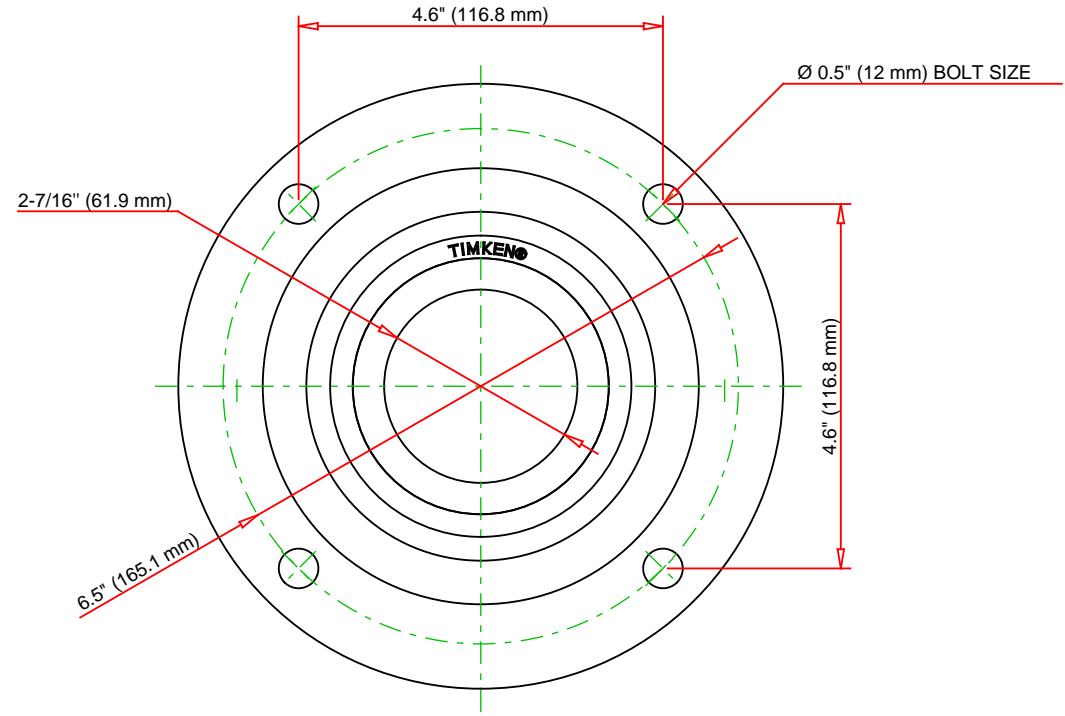
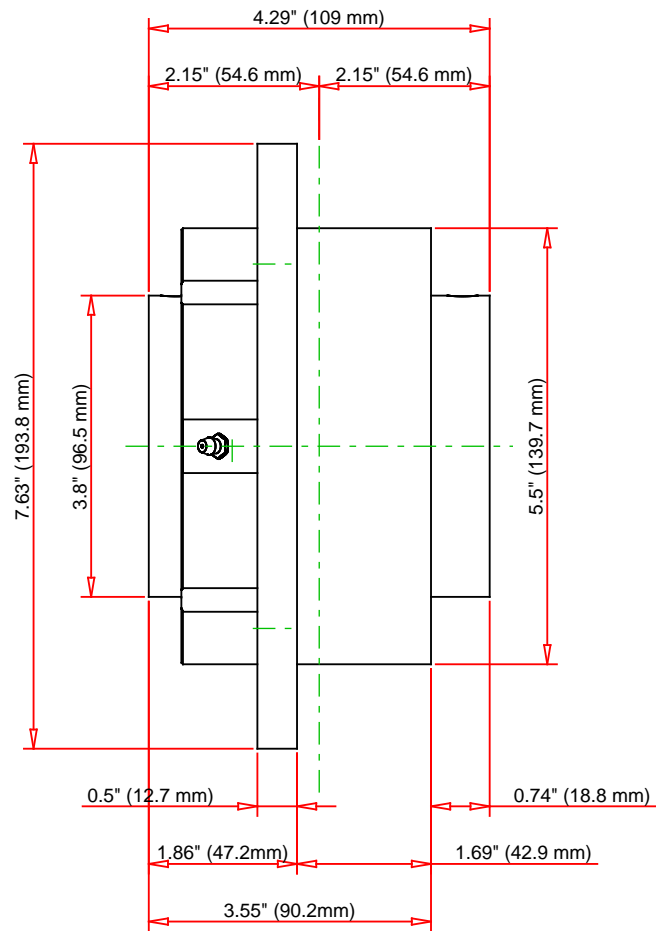
Oil Lubrication - M/N Seal	1800 rpm
Oil Lubrication - T Seal	3200 rpm
Oil Lubrication - B/C/O Seal	1500 rpm
Grease Lubrication - M/N Seal	1800 rpm
Grease Lubrication - T Seal	2800 rpm
Grease Lubrication - B/C/O Seal	1500 rpm

Engineering Bearing Attributes

Float	0.083 in 2.108 mm
Shaft Tolerance	0.0015 in 0.038 mm

Engineering Internal Radial Clearance

Eng Internal Radial Clearance - Min	0.0016
Eng Internal Radial Clearance - Max	0.0026
Pre Install Clearance Min	0.040 in 0.0016 mm
Pre Install Clearance Max	0.065 in 0.0026 mm



Note: Section View not to Scale

C - Dynamic Load	46400	lbf	206000	N
C0 - Static Load	48600	lbf	216000	N
Weight	16	lb	7.3	kg
Max. Speed T-Seals & Grease	2800	rpm		
Rad. Clearance - Max.	0.0026			

TIMKEN

THE TIMKEN COMPANY
NORTH CANTON, OHIO USA

QAACW13A207S

Double Concentric Piloted Flange
Cartridge

Every reasonable effort has been made to ensure the accuracy of the information contained in this writing, but no liability is accepted for errors, omissions or for any other reason.

FOR DISCUSSION ONLY