


The Timken Company

4500 Mt Pleasant St. NW

N. Canton, OH 44720

Phone: (234) 262-3000

E-Mail: CustomerCAD@timken.com • **Web site:** www.timken.com

Part Number QAACW20A315S, Double Concentric Piloted Flange Cartridge



[Specifications](#) | [Dimensions](#) | [Radial and Thrust Factors](#) | [Engineering Seal Speed](#) | [Engineering Bearing Attributes](#) | [Engineering Internal Radial Clearance](#)

Specifications

Engineering Group Mounted Bearing

Bearing Number 22220

Shaft Size 3 15/16 in

Shaft Size Type Imperial

Full Timken Part Number
 QAACW20A315SB
 QAACW20A315SC
 QAACW20A315SEB
 QAACW20A315SEC
 QAACW20A315SEM
 QAACW20A315SEN
 QAACW20A315SEO
 QAACW20A315SET
 QAACW20A315SM
 QAACW20A315SMNG
 QAACW20A315SN



QAACW20A315SO
QAACW20A315ST

Locking Style Double Concentric

Housing Construction Piloted Flange Cartridge

UPC Code

0883450018005
0883450018012
0883450018036
0883450018043
0883450018050
0883450018067
0883450018074
0883450018081
0883450194273
0883450194457
0883450271448
0883450271622
0883450433464

Dimensions

Dimension BC

9.38 in
238.3 mm

Dimension C

6 in
152.4 mm

Dimension D

8.13 in
206.5 mm

Dimension E

6.63 in
168.4 mm

Dimension B Exp

2.58 in
65.5 mm

Dimension B Fix

2.5 in
63.5 mm

Dimension F

10.88 in
276.4 mm

Dimension H	1 in 25.4 mm
Dimension J (Bolt Size)	0.75 in 20 mm
Dimension M	2.97 in 75.4 mm
Dimension L Exp	4.83 in 122.7 mm
Dimension L Fix	4.75 in 120.7 mm
Dimension RAA	1.19 in 30.2 mm
Dimension SAA	5.94 in 150.9 mm
Dimension G	8.125 in 206.4 mm
Dimension N	2.25 in 57.2 mm

Radial and Thrust Factors

C0 - Static Load	113000 lbf 502000 N
C - Dynamic Load (Basic)	97700 lbf 435000 N
e - Geometry Factor	0.24
Y1 - Geometry Factor	2.85
Y2 - Geometry Factor	4.24

Engineering Seal Speed

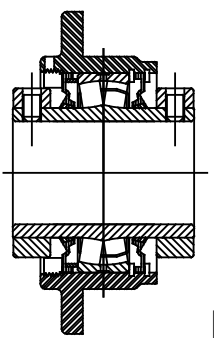
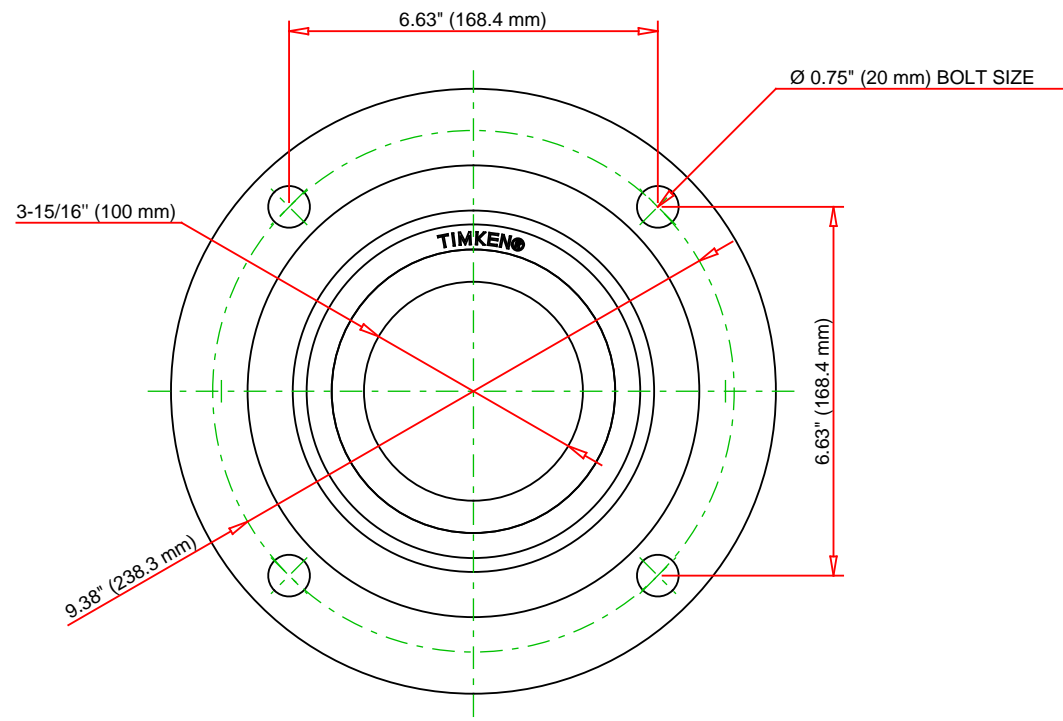
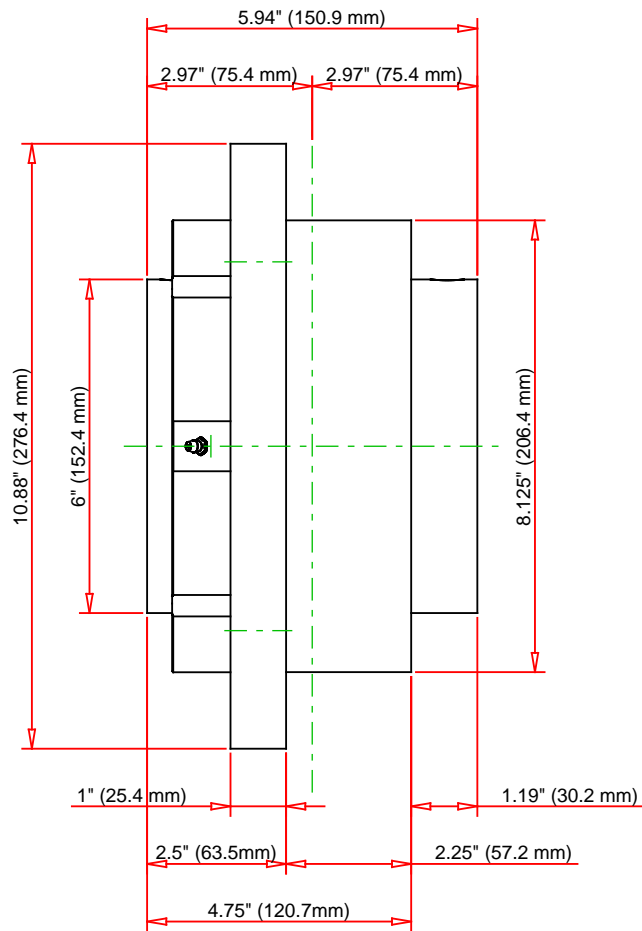
Oil Lubrication - M/N Seal	1200 rpm
Oil Lubrication - T Seal	2000 rpm
Oil Lubrication - B/C/O Seal	900 rpm
Grease Lubrication - M/N Seal	1200 rpm
Grease Lubrication - T Seal	1600 rpm
Grease Lubrication - B/C/O Seal	900 rpm

Engineering Bearing Attributes

Float	0.083 in 2.108 mm
Shaft Tolerance	0.0030 in 0.076 mm

Engineering Internal Radial Clearance

Eng Internal Radial Clearance - Min	0.0030
Eng Internal Radial Clearance - Max	0.0047
Pre Install Clearance Min	0.075 in 0.0030 mm
Pre Install Clearance Max	0.120 in 0.0047 mm



Note: Section View not to Scale

C - Dynamic Load	97700	lbf	435000	N
C0 - Static Load	113000	lbf	502000	N
Weight	43	lb	19.5	kg
Max. Speed T-Seals & Grease	1600	rpm		
Rad. Clearance - Max.	0.0047			

TIMKEN

THE TIMKEN COMPANY
NORTH CANTON, OHIO USA

QAACW20A315S
Double Concentric Piloted Flange
Cartridge

Every reasonable effort has been made to ensure the accuracy of the information contained in this writing, but no liability is accepted for errors, omissions or for any other reason.

FOR DISCUSSION ONLY