


The Timken Company

4500 Mt Pleasant St. NW

N. Canton, OH 44720

Phone: (234) 262-3000

E-Mail: CustomerCAD@timken.com • **Web site:** www.timken.com

Part Number QACW10A115S, Single Concentric Piloted Flange Cartridge



[Specifications](#) | [Dimensions](#) | [Radial and Thrust Factors](#) | [Engineering Seal Speed](#) | [Engineering Bearing Attributes](#) | [Engineering Internal Radial Clearance](#)

Specifications

Engineering Group	Mounted Bearing
Bearing Number	22210
Shaft Size	1 15/16 in
Shaft Size Type	Imperial
Full Timken Part Number	QACW10A115SB QACW10A115SC QACW10A115SEB QACW10A115SEC QACW10A115SEM QACW10A115SEN QACW10A115SEO QACW10A115SET QACW10A115SM QACW10A115SMNG QACW10A115SMT QACW10A115SN QACW10A115SO



QACW10A115ST

Locking Style Single Concentric

Housing Construction Piloted Flange Cartridge

UPC Code

0883450036306
 0883450036313
 0883450036337
 0883450036344
 0883450036351
 0883450036368
 0883450036375
 0883450036382
 0883450193818
 0883450193979
 0883450270984
 0883450271141
 0883450410427
 0883450433495

Dimensions

Dimension BC 5.38 in
136.7 mm

Dimension B Exp 1.57 in
39.9 mm

Dimension B Fix 1.52 in
38.6 mm

Dimension C 2.88 in
73.2 mm

Dimension D 4.47 in
113.5 mm

Dimension E 3.8 in
96.5 mm

Dimension F 6.38 in
162.1 mm

Dimension G	4.5 in 114.3 mm
Dimension H	0.38 in 9.7 mm
Dimension J (Bolt Size)	0.438 in 10 mm
Dimension KA	1 in 25.4 mm
Dimension L Exp	3.07 in 78 mm
Dimension L Fix	3.02 in 76.7 mm
Dimension M	1.87 in 47.5 mm
Dimension N	1.5 in 38.1 mm
Dimension RA	0.15 in 3.8 mm
Dimension SA	2.87 in 72.9 mm

Radial and Thrust Factors

C0 - Static Load	26600 lbf 118000 N
C - Dynamic Load (Basic)	26300 lbf 117000 N
e - Geometry Factor	0.24
Y1 - Geometry Factor	2.84
Y2 - Geometry Factor	4.23

Engineering Seal Speed

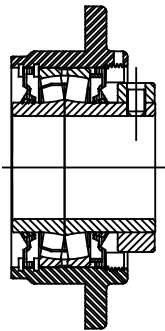
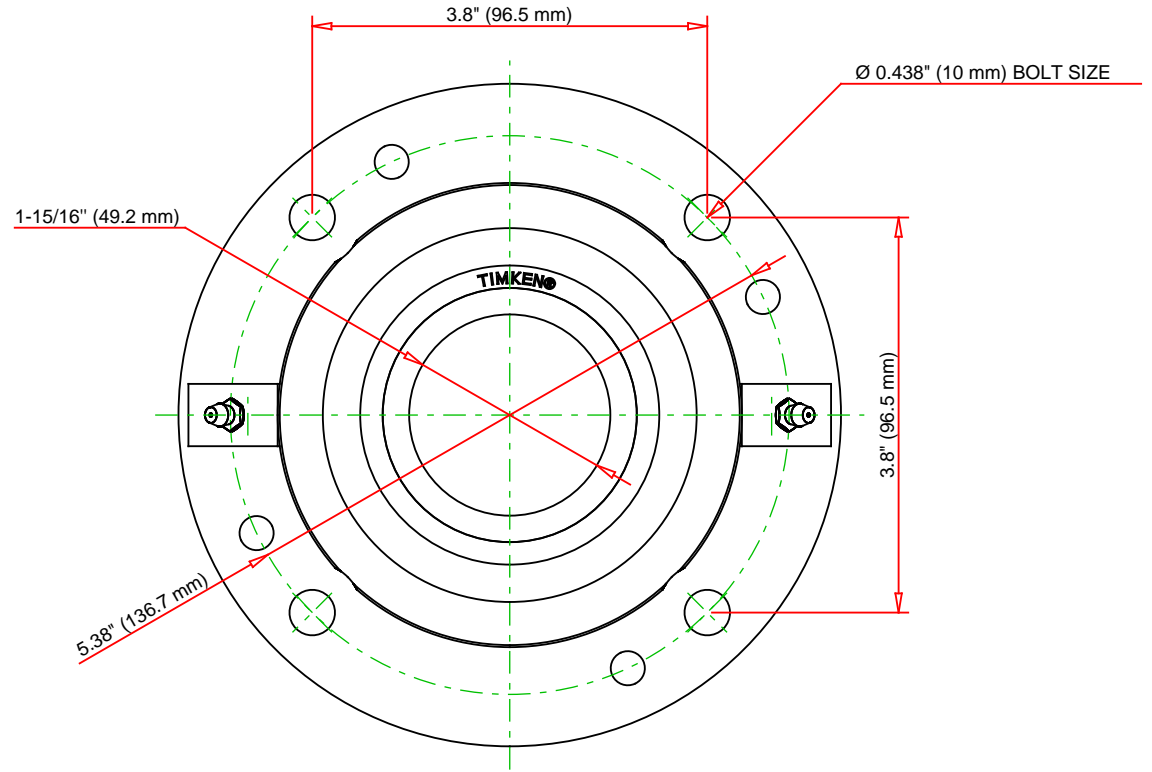
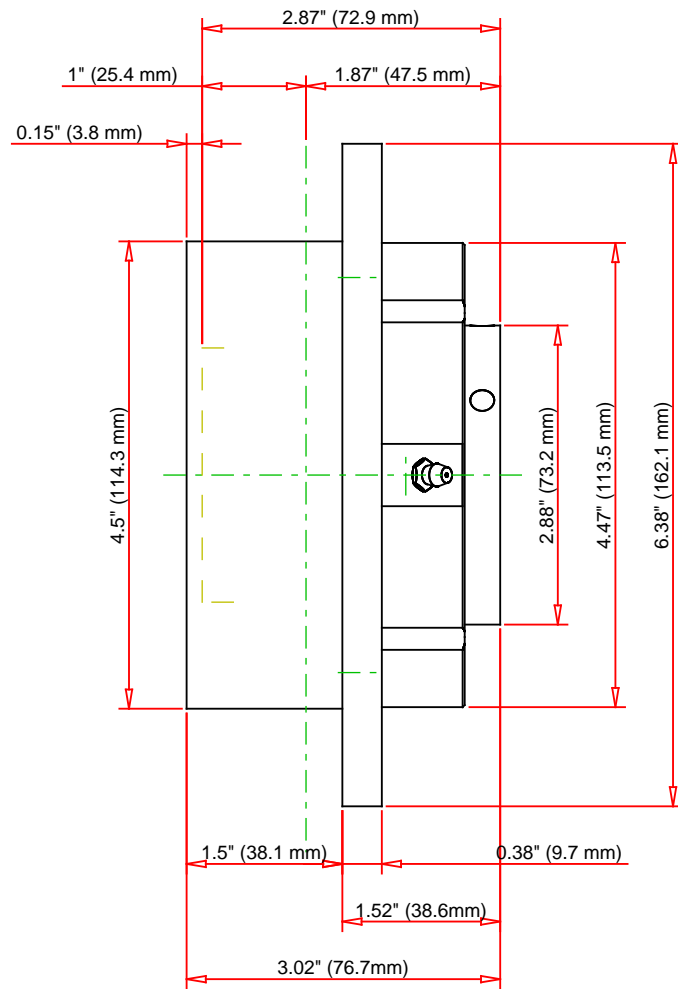
Oil Lubrication - M/N Seal	2400 rpm
Oil Lubrication - T Seal	4200 rpm
Oil Lubrication - B/C/O Seal	1800 rpm
Grease Lubrication - M/N Seal	2400 rpm
Grease Lubrication - T Seal	3550 rpm
Grease Lubrication - B/C/O Seal	1800 rpm

Engineering Bearing Attributes

Float	0.050 in 1.270 mm
Shaft Tolerance	0.0015 in 0.038 mm

Engineering Internal Radial Clearance

Eng Internal Radial Clearance - Min	0.0016
Eng Internal Radial Clearance - Max	0.0026
Pre Install Clearance Min	0.0016 in 0.040 mm
Pre Install Clearance Max	0.0026 in 0.065 mm



Note: Section View not to Scale

C - Dynamic Load	26300	lbf	117000	N
C0 - Static Load	26600	lbf	118000	N
Weight	10	lb	4.5	kg
Max. Speed T-Seals & Grease	3550	rpm		
Rad. Clearance - Max.	0.0026			

TIMKEN

THE TIMKEN COMPANY
NORTH CANTON, OHIO USA

QACW10A115S

Single Concentric Piloted Flange
Cartridge

Every reasonable effort has been made to ensure the accuracy of the information contained in this writing, but no liability is accepted for errors, omissions or for any other reason.

FOR DISCUSSION ONLY