


The Timken Company

4500 Mt Pleasant St. NW

N. Canton, OH 44720

Phone: (234) 262-3000

E-Mail: CustomerCAD@timken.com • **Web site:** www.timken.com

Part Number QAACW20A400S, Double Concentric Piloted Flange Cartridge



[Specifications](#) | [Dimensions](#) | [Radial and Thrust Factors](#) | [Engineering Seal Speed](#) | [Engineering Bearing Attributes](#) | [Engineering Internal Radial Clearance](#)

Specifications

Engineering Group Mounted Bearing

Bearing Number 22220

Shaft Size 4 in

Shaft Size Type Imperial

Full Timken Part Number
 QAACW20A400SB
 QAACW20A400SC
 QAACW20A400SEB
 QAACW20A400SEC
 QAACW20A400SEM
 QAACW20A400SEN
 QAACW20A400SEO
 QAACW20A400SET
 QAACW20A400SM
 QAACW20A400SN
 QAACW20A400SO



QAACW20A400ST

Locking Style Double Concentric

Housing Construction Piloted Flange Cartridge

UPC Code

0883450018104
 0883450018111
 0883450018135
 0883450018142
 0883450018159
 0883450018166
 0883450018173
 0883450018180
 0883450194280
 0883450194464
 0883450271455
 0883450271639

Dimensions

Dimension BC 9.38 in
238.3 mm

Dimension C 6 in
152.4 mm

Dimension D 8.13 in
206.5 mm

Dimension E 6.63 in
168.4 mm

Dimension B Exp 2.58 in
65.5 mm

Dimension B Fix 2.5 in
63.5 mm

Dimension F 10.88 in
276.4 mm

Dimension H 1 in
25.4 mm

Dimension J (Bolt Size)	0.75 in 20 mm
Dimension M	2.97 in 75.4 mm
Dimension L Exp	4.83 in 122.7 mm
Dimension L Fix	4.75 in 120.7 mm
Dimension RAA	1.19 in 30.2 mm
Dimension SAA	5.94 in 150.9 mm
Dimension G	8.125 in 206.4 mm
Dimension N	2.25 in 57.2 mm

Radial and Thrust Factors

C0 - Static Load	113000 lbf 502000 N
C - Dynamic Load (Basic)	97700 lbf 435000 N
e - Geometry Factor	0.24
Y1 - Geometry Factor	2.85
Y2 - Geometry Factor	4.24

Engineering Seal Speed

Oil Lubrication - M/N Seal	1200 rpm
-----------------------------------	----------

Oil Lubrication - T Seal	2000 rpm
---------------------------------	----------

Oil Lubrication - B/C/O Seal	900 rpm
-------------------------------------	---------

Grease Lubrication - M/N Seal	1200 rpm
--------------------------------------	----------

Grease Lubrication - T Seal	1600 rpm
------------------------------------	----------

Grease Lubrication - B/C/O Seal	900 rpm
--	---------

Engineering Bearing Attributes

Float	0.083 in 2.108 mm
--------------	----------------------

Shaft Tolerance	0.0030 in 0.076 mm
------------------------	-----------------------

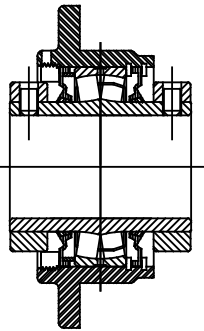
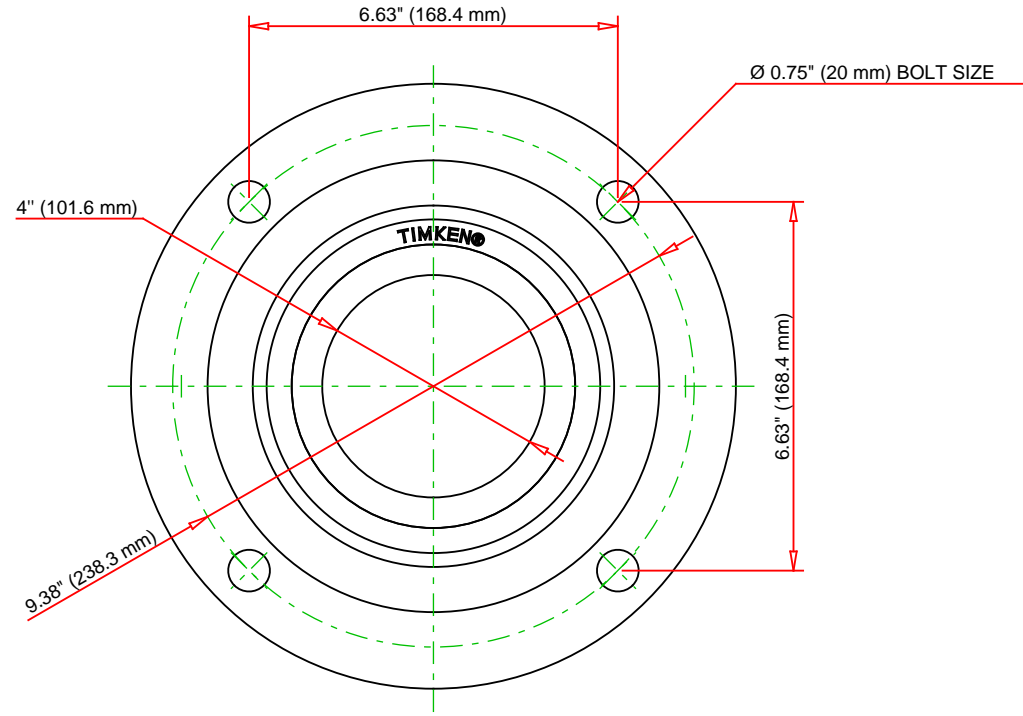
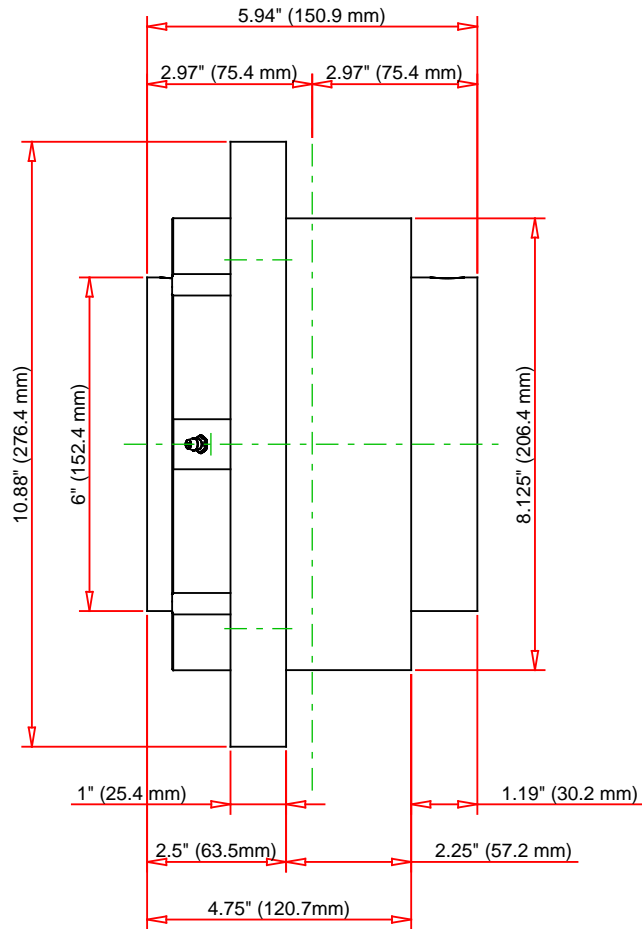
Engineering Internal Radial Clearance

Eng Internal Radial Clearance - Min	0.0030
--	--------

Eng Internal Radial Clearance - Max	0.0047
--	--------

Pre Install Clearance Min	0.075 in 0.0030 mm
----------------------------------	-----------------------

Pre Install Clearance Max	0.120 in 0.0047 mm
----------------------------------	-----------------------



Note: Section View not to Scale

C - Dynamic Load	97700	lbf	435000	N
C0 - Static Load	113000	lbf	502000	N
Weight	43	lb	19.5	kg
Max. Speed T-Seals & Grease	1600	rpm		
Rad. Clearance - Max.	0.0047			

TIMKEN

THE TIMKEN COMPANY
NORTH CANTON, OHIO USA

QAACW20A400S
Double Concentric Piloted Flange
Cartridge

Every reasonable effort has been made to ensure the accuracy of the information contained in this writing, but no liability is accepted for errors, omissions or for any other reason.

FOR DISCUSSION ONLY