



The Timken Company

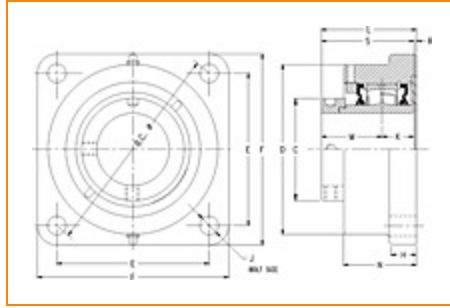
4500 Mt Pleasant St. NW

N. Canton, OH 44720

Phone: (234) 262-3000

E-Mail: CustomerCAD@timken.com • **Web site:** www.timken.com

Part Number QMFX15J300S, Eccentric Four Bolt Square Flange Block



[Specifications](#) | [Dimensions](#) | [Radial and Thrust Factors](#) | [Engineering Seal Speed](#) | [Engineering Bearing Attributes](#) | [Engineering Internal Radial Clearance](#)

Specifications -

Engineering Group	Mounted Bearing
Bearing Number	22215
Shaft Size	3 in
Shaft Size Type	Imperial
Full Timken Part Number	QMFX15J300SB QMFX15J300SC QMFX15J300SEB QMFX15J300SEC QMFX15J300SEM QMFX15J300SEN QMFX15J300SEO QMFX15J300SET QMFX15J300SM QMFX15J300SN QMFX15J300SO



QMF15J300ST

Locking Style

Eccentric

Housing Construction

Four-Bolt Square Flange

UPC Code

0883450143769
0883450143776
0883450143783
0883450143790
0883450143806
0883450143813
0883450143820
0883450143837
0883450164825
0883450165327
0883450257121
0883450257541

Dimensions**Dimension BC**

8.5 in
215.9 mm

Dimension C

4.02 in
102.1 mm

Dimension D

6.65 in
168.9 mm

Dimension E

6.01 in
152.7 mm

Dimension F

7.44 in
189 mm

Dimension H

1.06 in
26.9 mm

Dimension J (Bolt Size)

0.75 in
20 mm

Dimension K

1.25 in
31.8 mm

Dimension L Exp	3.86 in 98 mm
Dimension L Fix	3.78 in 96 mm
Dimension M	2.37 in 60.2 mm
Dimension N	3 in 76.2 mm
Dimension R	0.16 in 4.1 mm
Dimension S	3.62 in 91.9 mm

Radial and Thrust Factors

C0 - Static Load	54100 lbf 240000 N
C - Dynamic Load (Basic)	49900 lbf 222000 N
e - Geometry Factor	0.22
Y1 - Geometry Factor	3.01
Y2 - Geometry Factor	4.48

Engineering Seal Speed

Oil Lubrication - M/N Seal	1600 rpm
Oil Lubrication - T Seal	2900 rpm
Oil Lubrication - B/C/O Seal	1300 rpm
Grease Lubrication - M/N Seal	1600 rpm

Grease Lubrication - T Seal	2400 rpm
------------------------------------	----------

Grease Lubrication - B/C/O Seal	1300 rpm
--	----------

Engineering Bearing Attributes

Float	0.083 in 2.108 mm
--------------	----------------------

Shaft Tolerance	0.0020 in 0.051 mm
------------------------	-----------------------

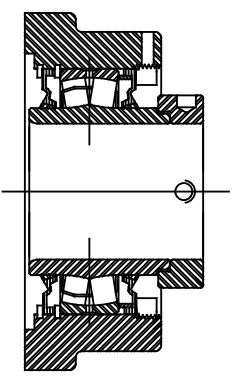
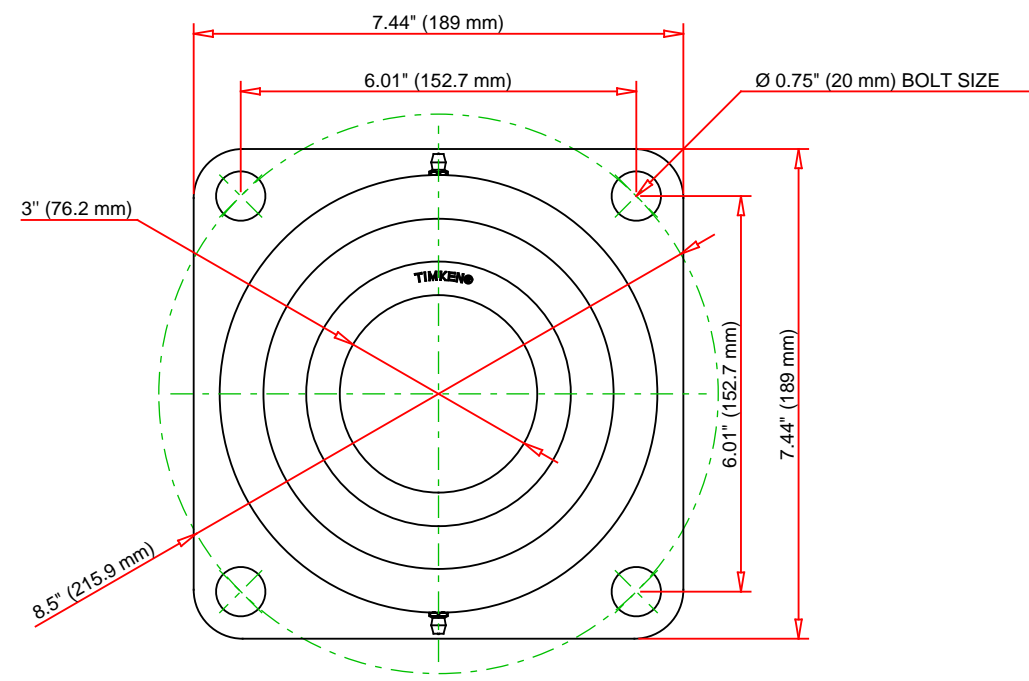
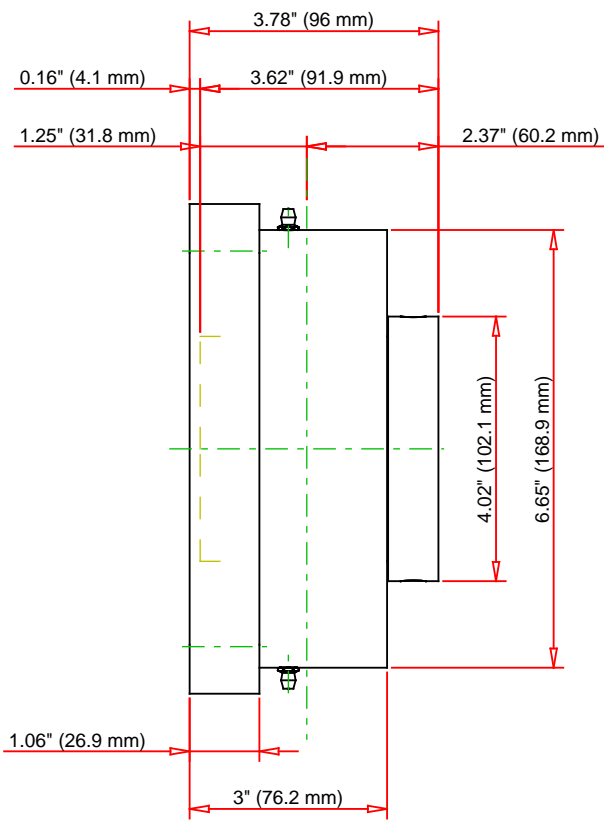
Engineering Internal Radial Clearance

Eng Internal Radial Clearance - Min	0.002
--	-------

Eng Internal Radial Clearance - Max	0.0031
--	--------

Pre Install Clearance Min	0.0020 in 0.050 mm
----------------------------------	-----------------------

Pre Install Clearance Max	0.0031 in 0.080 mm
----------------------------------	-----------------------



Note: Section View not to Scale

C - Dynamic Load	49900	lbf	222000	N
C0 - Static Load	54100	lbf	240000	N
Weight	17	lb	7.7	kg
Max. Speed T-Seals & Grease	2400	rpm		
Rad. Clearance - Max.	0.0031			

TIMKEN

THE TIMKEN COMPANY
NORTH CANTON, OHIO USA

QMFx15J300S
Eccentric Four Bolt Square Flange
Block

Every reasonable effort has been made to ensure the accuracy of the information contained in this writing, but no liability is accepted for errors, omissions or for any other reason.

FOR DISCUSSION ONLY