



The Timken Company

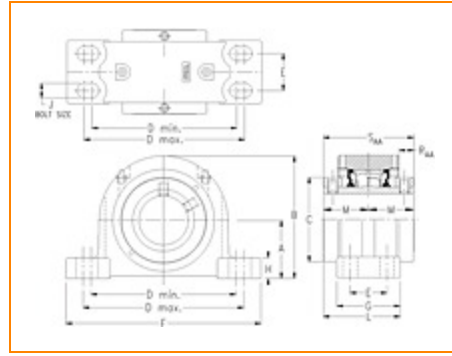
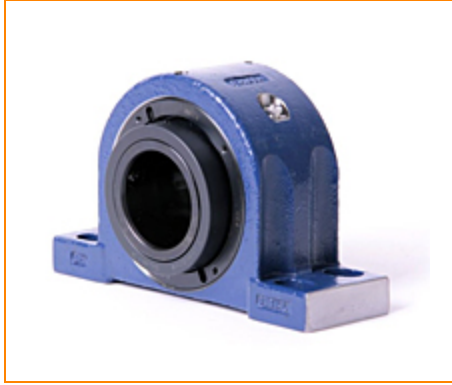
4500 Mt Pleasant St. NW

N. Canton, OH 44720

Phone: (234) 262-3000

E-Mail: CustomerCAD@timken.com • **Web site:** www.timken.com

Part Number QAAPF15A300S, Double Concentric Four-Bolt Pillow Block



[Specifications](#) | [Dimensions](#) | [Radial and Thrust Factors](#) | [Engineering Seal Speed](#) | [Engineering Bearing Attributes](#) | [Engineering Internal Radial Clearance](#)

Specifications

Engineering Group Mounted Bearing

Bearing Number 22215

Shaft Size 3 in

Shaft Size Type Imperial

Full Timken Part Number

- QAAPF15A300SB
- QAAPF15A300SC
- QAAPF15A300SEB
- QAAPF15A300SEC
- QAAPF15A300SEM
- QAAPF15A300SEN
- QAAPF15A300SEO
- QAAPF15A300SET
- QAAPF15A300SM
- QAAPF15A300SN
- QAAPF15A300SO
- QAAPF15A300ST



Locking Style	Double Concentric
Housing Construction	Four-Bolt Pillow Block

UPC Code	0883450027304
	0883450027311
	0883450027335
	0883450027342
	0883450027359
	0883450027366
	0883450027373
	0883450027380
	0883450189521
	0883450189651
0883450266864	
0883450267007	

Dimensions

Dimension A	3.25 in 82.6 mm
Dimension B	6.6 in 167.6 mm
Dimension C	4.29 in 109 mm
Dimension D Min	7.6 in 193 mm
Dimension D Max	9.1 in 231.1 mm
Dimension E	1.88 in 47.8 mm
Dimension F	10.44 in 265.2 mm
Dimension G	3.13 in 79.5 mm

Dimension H	1.29 in 32.8 mm
Dimension J (Bolt Size)	0.625 in 16 mm
Dimension L	3.94 in 100.1 mm
Dimension M	2.37 in 60.2 mm
Dimension RAA	0.88 in 22.4 mm
Dimension SAA	4.74 in 120.4 mm

Radial and Thrust Factors

C0 - Static Load	54100 lbf 240000 N
C - Dynamic Load (Basic)	49900 lbf 222000 N
e - Geometry Factor	0.22
Y1 - Geometry Factor	3.14
Y2 - Geometry Factor	4.67

Engineering Seal Speed

Oil Lubrication - M/N Seal	1600 rpm
Oil Lubrication - T Seal	2900 rpm
Oil Lubrication - B/C/O Seal	1300 rpm
Grease Lubrication - M/N Seal	1600 rpm

Grease Lubrication - T Seal	2400 rpm
------------------------------------	----------

Grease Lubrication - B/C/O Seal	1300 rpm
--	----------

Engineering Bearing Attributes

Float	0.083 in 2.108 mm
--------------	----------------------

Shaft Tolerance	0.0020 in 0.051 mm
------------------------	-----------------------

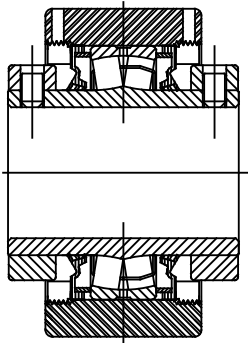
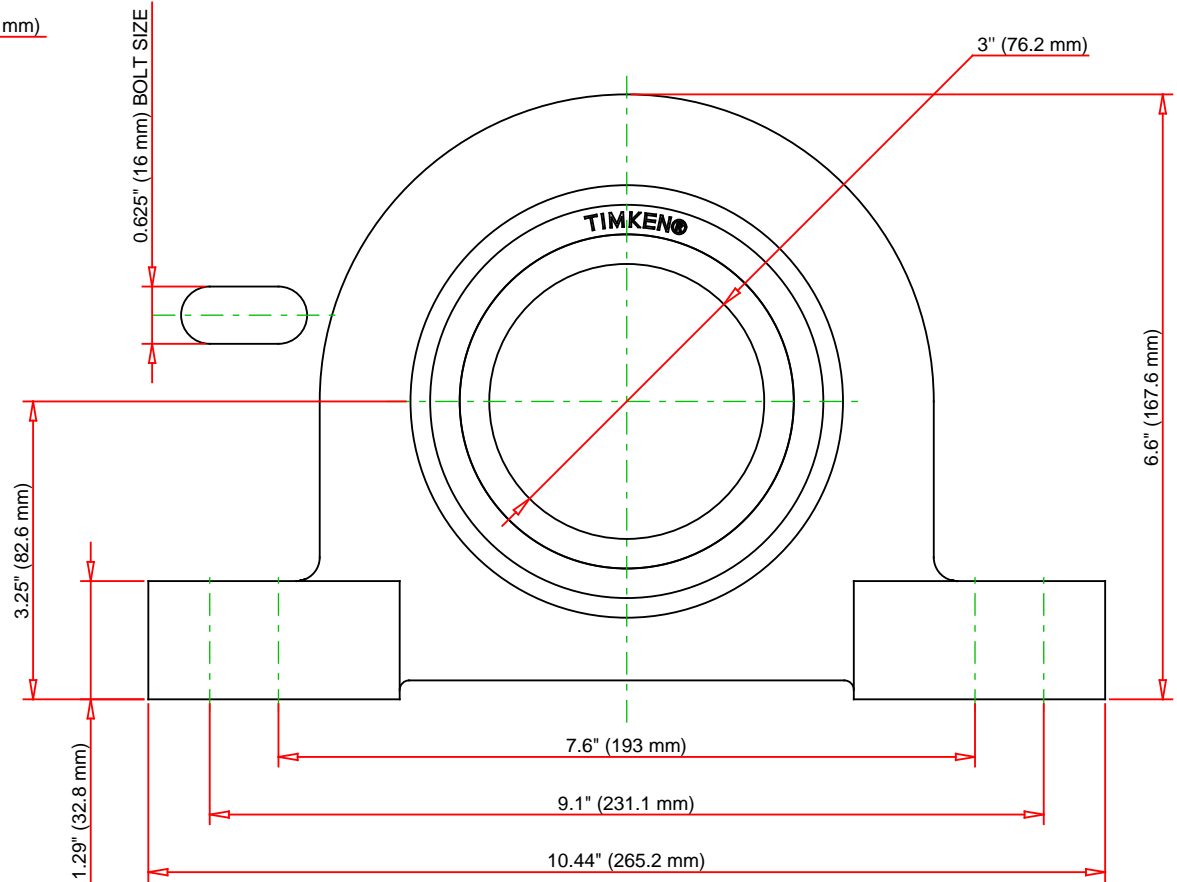
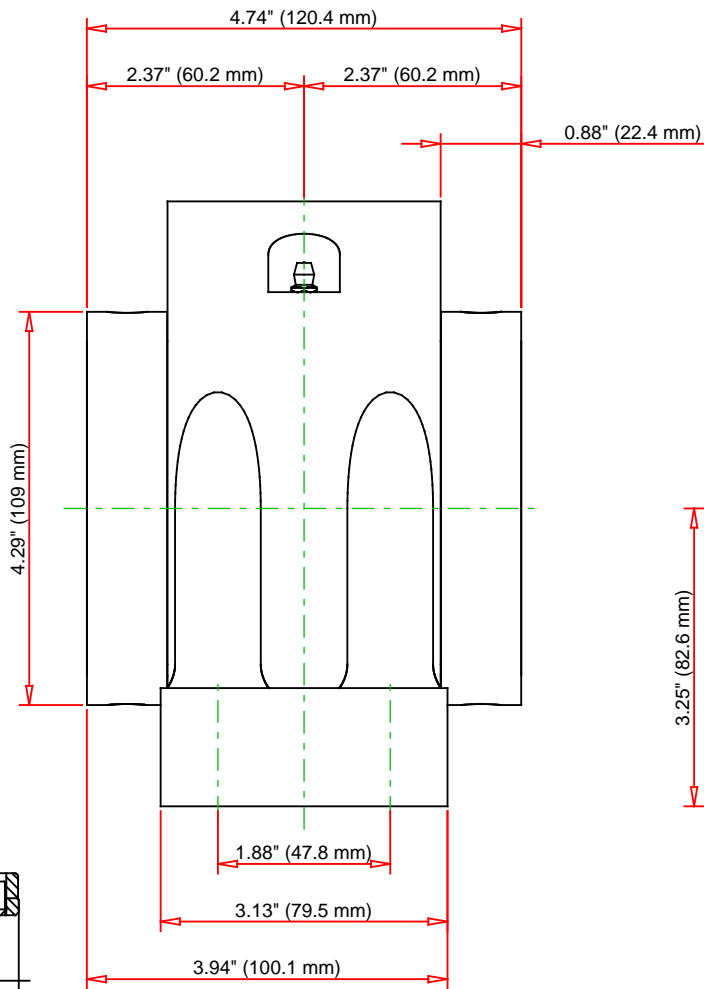
Engineering Internal Radial Clearance

Eng Internal Radial Clearance - Min	0.0020
--	--------

Eng Internal Radial Clearance - Max	0.0031
--	--------

Pre Install Clearance Min	0.0020 in 0.050 mm
----------------------------------	-----------------------

Pre Install Clearance Max	0.0031 in 0.080 mm
----------------------------------	-----------------------



Note: Section View not to Scale

C - Dynamic Load	49900	lbf	222000	N
C0 - Static Load	54100	lbf	240000	N
Weight	27	lb	12.2	kg
Max. Speed T-Seals & Grease	2400	rpm		
Rad. Clearance - Max.	0.0031			

TIMKEN

THE TIMKEN COMPANY
NORTH CANTON, OHIO USA

QAAPF15A300S

Double Concentric Four-Bolt Pillow
Block

Every reasonable effort has been made to ensure the accuracy of the information contained in this writing, but no liability is accepted for errors, omissions or for any other reason.

FOR DISCUSSION ONLY