



The Timken Company

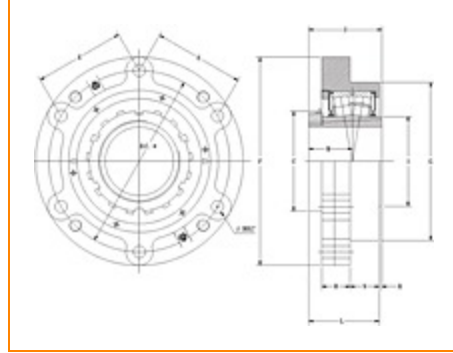
4500 Mt Pleasant St. NW

N. Canton, OH 44720

Phone: (234) 262-3000

E-Mail: CustomerCAD@timken.com • **Web site:** www.timken.com

Part Number DVC26K408S, Tapered Adapter Piloted Flange Cartridge



[Specifications](#) | [Dimensions](#) | [Radial and Thrust Factors](#) | [Engineering Seal Speed](#) | [Engineering Bearing Attributes](#) | [Engineering Internal Radial Clearance](#)

Specifications

Engineering Group Mounted Bearing

Bearing Number 22226

Shaft Size 4 1/2 in

Shaft Size Type Imperial

Full Timken Part Number

- DVC26K408SB
- DVC26K408SC
- DVC26K408SEB
- DVC26K408SEC
- DVC26K408SEM
- DVC26K408SEN
- DVC26K408SEO
- DVC26K408SET
- DVC26K408SM
- DVC26K408SN
- DVC26K408SO
- DVC26K408ST



Locking Style	Tapered Adapter
Housing Construction	Piloted Flange Cartridge
UPC Code	0883450005425 0883450005432 0883450005456 0883450005463 0883450005470 0883450005487 0883450005494 0883450005500 0883450197021 0883450197229 0883450274531 0883450274739

Dimensions

Dimension BC	11-3/4 in 298.5 mm
Dimension C	6.5 in 165.1 mm
Dimension E	5.88 in 149.4 mm
Dimension F	13-1/2 in 342.900 mm
Dimension G	10.25 in 260.4 mm
Dimension H	1.85 in 47 mm
Dimension I	5.43 in 137.9 mm
Dimension J (Bolt Size)	0.75 in 20 mm

Dimension L	4.6 in 116.8 mm
--------------------	--------------------

Dimension M	2.83 in 71.9 mm
--------------------	--------------------

Dimension N	1.9 in 48.3 mm
--------------------	-------------------

Dimension R	0.16 in 4.1 mm
--------------------	-------------------

Dimension S	4.76 in 120.9 mm
--------------------	---------------------

Radial and Thrust Factors

C0 - Static Load	212000 lbf 945000 N
-------------------------	------------------------

C - Dynamic Load (Basic)	170000 lbf 757000 N
---------------------------------	------------------------

e - Geometry Factor	0.26
----------------------------	------

Y1 - Geometry Factor	2.62
-----------------------------	------

Y2 - Geometry Factor	3.9
-----------------------------	-----

Engineering Seal Speed

Oil Lubrication - M/N Seal	700 rpm
-----------------------------------	---------

Oil Lubrication - T Seal	1500 rpm
---------------------------------	----------

Oil Lubrication - B/C/O Seal	400 rpm
-------------------------------------	---------

Grease Lubrication - M/N Seal	700 rpm
--------------------------------------	---------

Grease Lubrication - T Seal	1000 rpm
------------------------------------	----------

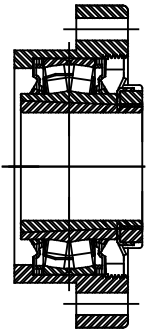
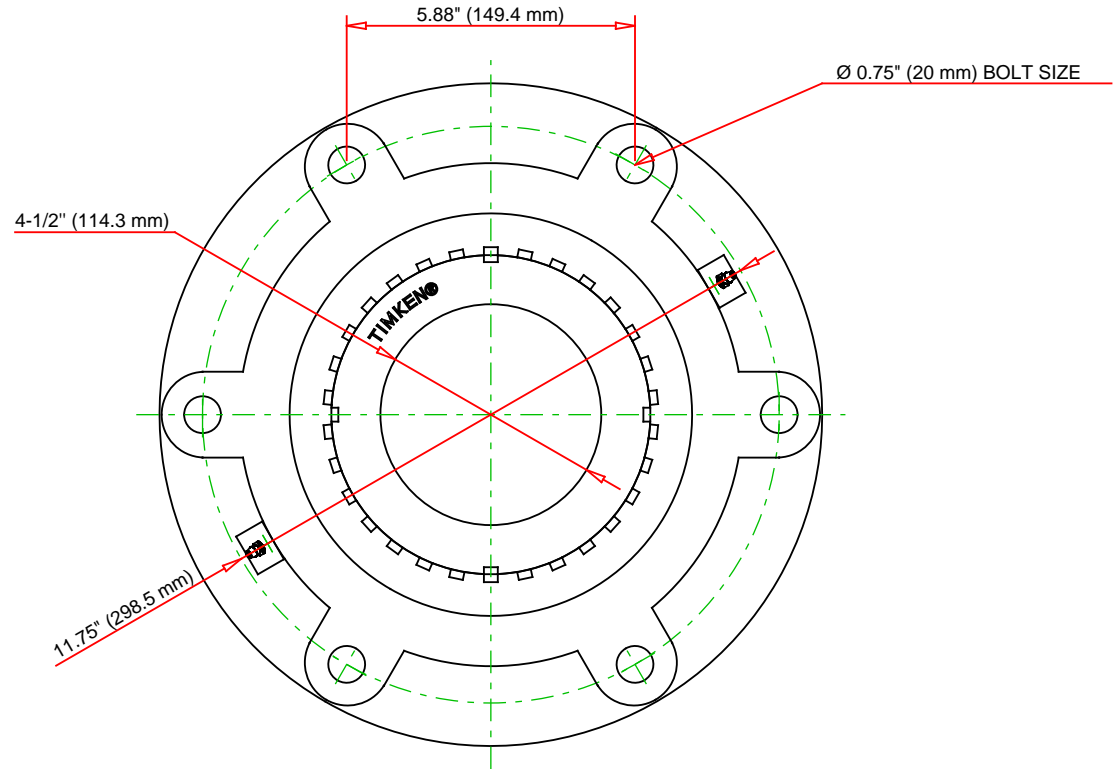
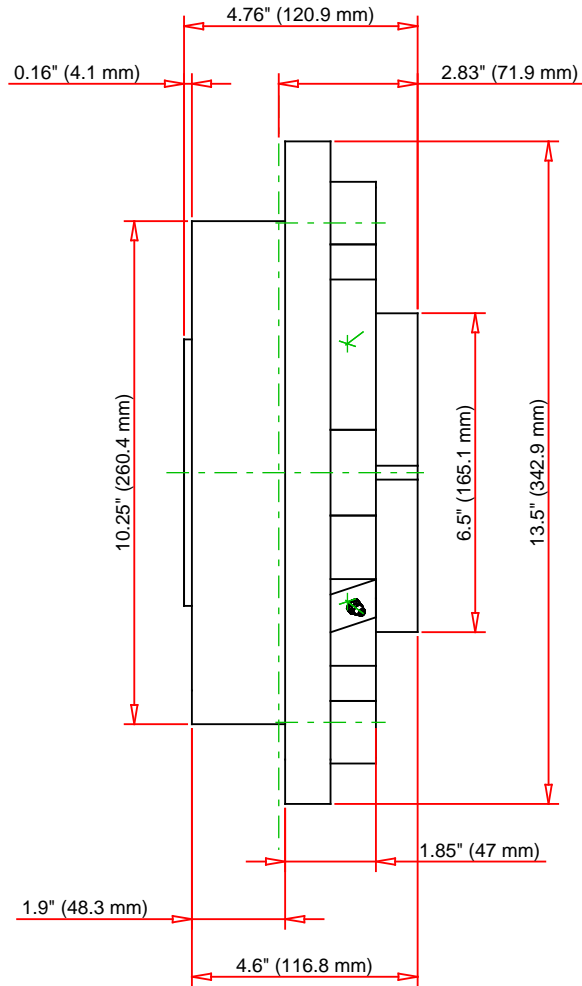
Grease Lubrication - B/C/O Seal	400 rpm
--	---------

Engineering Bearing Attributes

Float	0.083 in 2.108 mm
Shaft Tolerance	0.0040 in 0.102 mm

Engineering Internal Radial Clearance

Pre Install Clearance Min	0.0063 in 0.160 mm
Pre Install Clearance Max	0.0079 in 0.201 mm



Note: Section View not to Scale

C - Dynamic Load	170000	lbf	757000	N
C0 - Static Load	212000	lbf	945000	N
Weight	76	lb	34.5	kg
Max. Speed T-Seals & Grease	1000	rpm		
Rad. Clearance - Max.				

TIMKEN

THE TIMKEN COMPANY
NORTH CANTON, OHIO USA

DVC26K408S

Tapered Adapter Piloted Flange
Cartridge

Every reasonable effort has been made to ensure the accuracy of the information contained in this writing, but no liability is accepted for errors, omissions or for any other reason.

FOR DISCUSSION ONLY