



The Timken Company

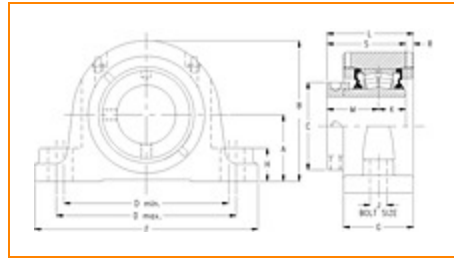
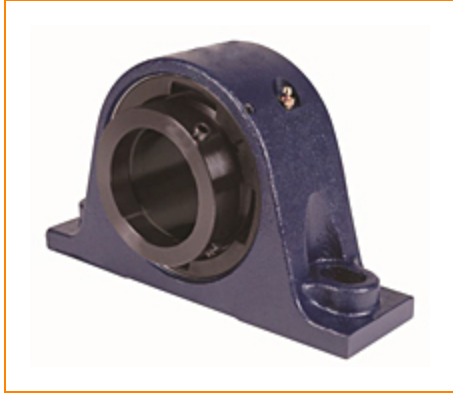
4500 Mt Pleasant St. NW

N. Canton, OH 44720

Phone: (234) 262-3000

E-Mail: CustomerCAD@timken.com • **Web site:** www.timken.com

Part Number QMPL15J300S, Eccentric Two-Bolt Pillow Block



[Specifications](#) | [Dimensions](#) | [Radial and Thrust Factors](#) | [Engineering Seal Speed](#) | [Engineering Bearing Attributes](#) | [Engineering Internal Radial Clearance](#)

Specifications

| | |
|--------------------------------|--|
| Engineering Group | Mounted Bearing |
| Bearing Number | 22215 |
| Shaft Size | 3 in |
| Shaft Size Type | Imperial |
| Full Timken Part Number | QMPL15J300SB QMPL15J300SC QMPL15J300SEB QMPL15J300SEC QMPL15J300SEM QMPL15J300SEN QMPL15J300SEO QMPL15J300SET QMPL15J300SM QMPL15J300SN QMPL15J300SO QMPL15J300ST |



| | |
|-----------------------------|--|
| Locking Style | Eccentric |
| Housing Construction | Two-Bolt Pillow Block |
| UPC Code | 0883450088220 0883450088237 0883450088251 0883450088268 0883450088275 0883450088282 0883450088299 0883450088305 0883450155144 0883450155489 0883450250115 0883450250450 |

Dimensions

| | |
|------------------------|----------------------|
| Dimension A | 3.25 in 82.6 mm |
| Dimension B | 6.59 in 167.4 mm |
| Dimension C | 4.01 in 101.9 mm |
| Dimension D Min | 7.7 in 195.6 mm |
| Dimension D Max | 8.4 in 213.4 mm |
| Dimension F | 10.44 in 265.2 mm |
| Dimension G | 3 in 76.2 mm |
| Dimension H | 1.38 in 35.1 mm |

| | |
|--------------------------------|---------------------|
| Dimension J (Bolt Size) | 0.75 in 20 mm |
| Dimension K | 1-1/4 in 31.8 mm |
| Dimension L | 3.87 in 98.3 mm |
| Dimension M | 2.37 in 60.2 mm |
| Dimension R | 0.25 in 6.4 mm |
| Dimension S | 3.62 in 91.9 mm |

Radial and Thrust Factors

| | |
|---------------------------------|-----------------------|
| C0 - Static Load | 54100 lbf 240000 N |
| C - Dynamic Load (Basic) | 49900 lbf 222000 N |
| e - Geometry Factor | 0.22 |
| Y1 - Geometry Factor | 3.14 |
| Y2 - Geometry Factor | 4.67 |

Engineering Seal Speed

| | |
|--------------------------------------|----------|
| Oil Lubrication - M/N Seal | 1600 rpm |
| Oil Lubrication - T Seal | 2900 rpm |
| Oil Lubrication - B/C/O Seal | 1300 rpm |
| Grease Lubrication - M/N Seal | 1600 rpm |

| | |
|------------------------------------|----------|
| Grease Lubrication - T Seal | 2400 rpm |
|------------------------------------|----------|

| | |
|--|----------|
| Grease Lubrication - B/C/O Seal | 1300 rpm |
|--|----------|

Engineering Bearing Attributes

| | |
|--------------|----------------------|
| Float | 0.083 in 2.108 mm |
|--------------|----------------------|

| | |
|------------------------|-----------------------|
| Shaft Tolerance | 0.0020 in 0.051 mm |
|------------------------|-----------------------|

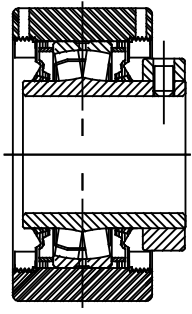
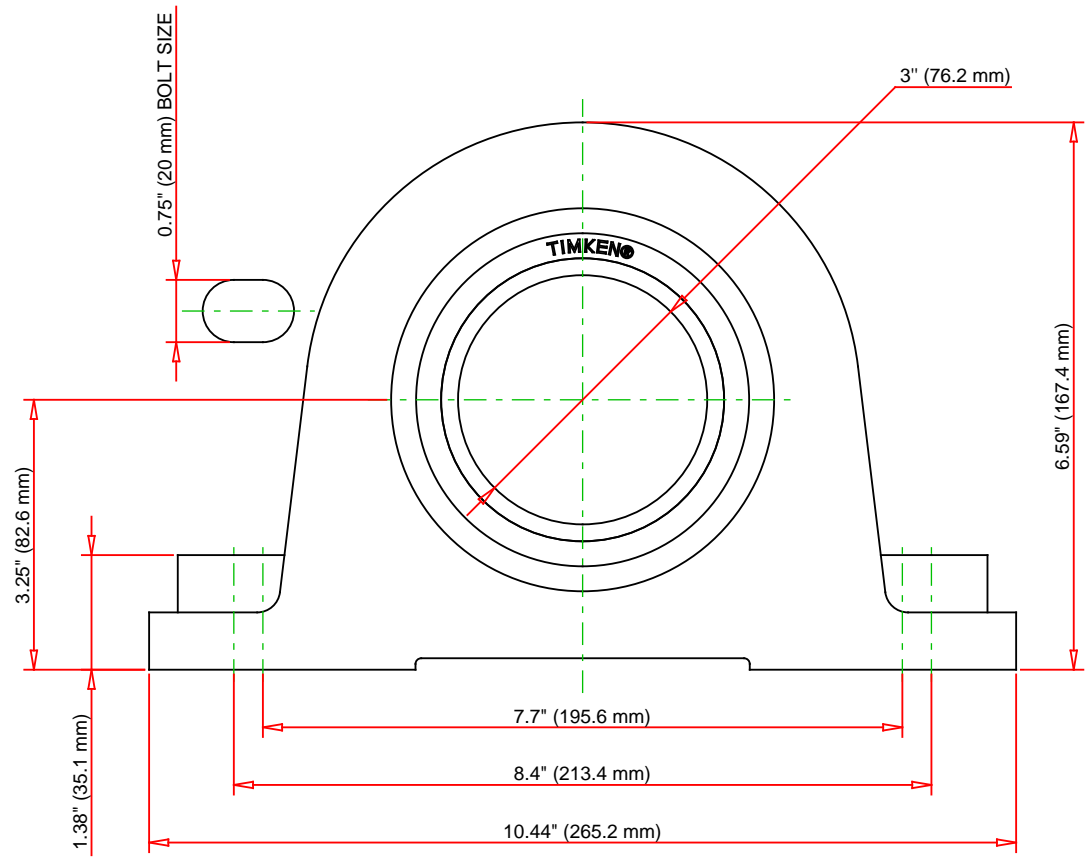
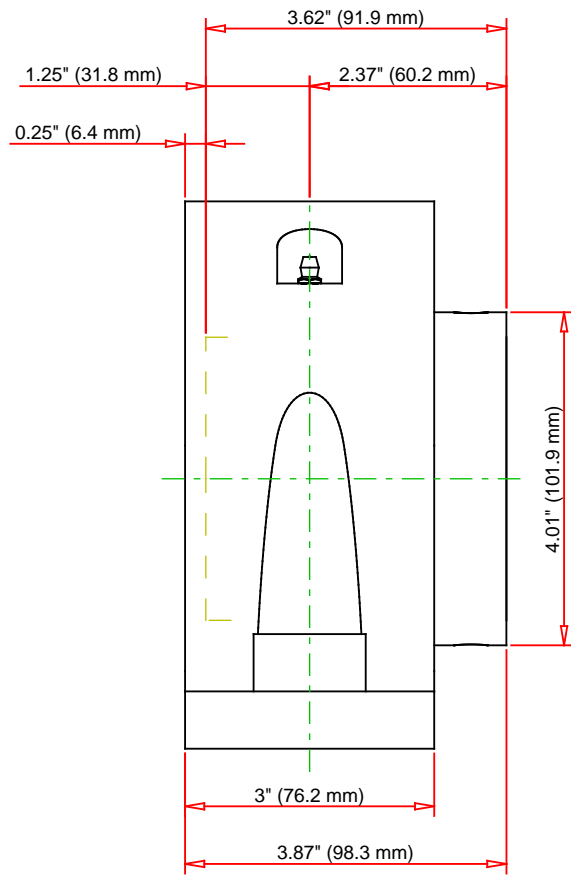
Engineering Internal Radial Clearance

| | |
|--|--------|
| Eng Internal Radial Clearance - Min | 0.0020 |
|--|--------|

| | |
|--|--------|
| Eng Internal Radial Clearance - Max | 0.0031 |
|--|--------|

| | |
|----------------------------------|-----------------------|
| Pre Install Clearance Min | 0.0020 in 0.050 mm |
|----------------------------------|-----------------------|

| | |
|----------------------------------|-----------------------|
| Pre Install Clearance Max | 0.0031 in 0.080 mm |
|----------------------------------|-----------------------|



Note: Section View not to Scale

| | | | | |
|-----------------------------|--------|-----|--------|----|
| C - Dynamic Load | 49900 | lbf | 222000 | N |
| C0 - Static Load | 54100 | lbf | 240000 | N |
| Weight | 28 | lb | 12.7 | kg |
| Max. Speed T-Seals & Grease | 2400 | rpm | | |
| Rad. Clearance - Max. | 0.0031 | | | |

TIMKEN

THE TIMKEN COMPANY
NORTH CANTON, OHIO USA

QMPL15J300S
Eccentric Two-Bolt Pillow Block

Every reasonable effort has been made to ensure the accuracy of the information contained in this writing, but no liability is accepted for errors, omissions or for any other reason.

FOR DISCUSSION ONLY