



The Timken Company

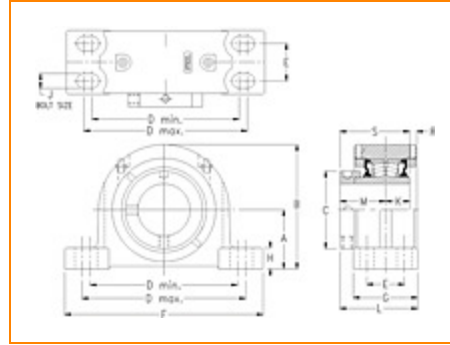
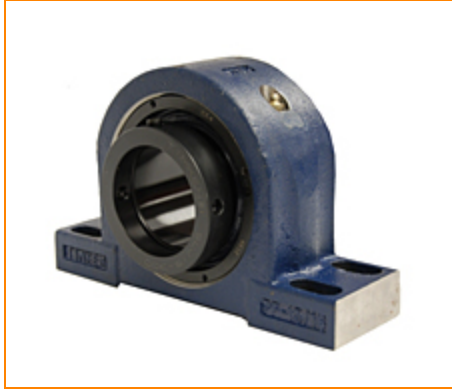
4500 Mt Pleasant St. NW

N. Canton, OH 44720

Phone: (234) 262-3000

E-Mail: CustomerCAD@timken.com • **Web site:** www.timken.com

Part Number QMPF15J300S, Eccentric Four-Bolt Pillow Block



[Specifications](#) | [Dimensions](#) | [Radial and Thrust Factors](#) | [Engineering Seal Speed](#) | [Engineering Bearing Attributes](#) | [Engineering Internal Radial Clearance](#)

Specifications

Engineering Group Mounted Bearing

Bearing Number 22215

Shaft Size 3 in

Shaft Size Type Imperial

Full Timken Part Number

- QMPF15J300SB
- QMPF15J300SC
- QMPF15J300SEB
- QMPF15J300SEC
- QMPF15J300SEM
- QMPF15J300SEN
- QMPF15J300SEO
- QMPF15J300SET
- QMPF15J300SM
- QMPF15J300SMNP



QMPF15J300SN
 QMPF15J300SO
 QMPF15J300ST

Locking Style

Eccentric

Housing Construction

Four-Bolt Pillow Block

UPC Code

0883450084024
 0883450084031
 0883450084055
 0883450084062
 0883450084079
 0883450084086
 0883450084093
 0883450084109
 0883450155731
 0883450156462
 0883450250672
 0883450251099
 0883450952804

Dimensions
Dimension A

3.25 in
 82.6 mm

Dimension B

6.6 in
 167.6 mm

Dimension C

4.01 in
 101.9 mm

Dimension D Min

7.6 in
 193 mm

Dimension D Max

9.1 in
 231.1 mm

Dimension E

1.88 in
 47.8 mm

Dimension F

10.44 in
 265.2 mm

Dimension G	3.13 in 79.5 mm
Dimension H	1.29 in 32.8 mm
Dimension J (Bolt Size)	0.625 in 16 mm
Dimension K	1-1/4 in 31.8 mm
Dimension L	3.93 in 99.8 mm
Dimension M	2.37 in 60.2 mm
Dimension R	0.24 in 6.1 mm
Dimension S	3.62 in 91.9 mm

Radial and Thrust Factors

C0 - Static Load	54100 lbf 240000 N
C - Dynamic Load (Basic)	49900 lbf 222000 N
e - Geometry Factor	0.22
Y1 - Geometry Factor	3.14
Y2 - Geometry Factor	4.67

Engineering Seal Speed

Oil Lubrication - M/N Seal	1600 rpm
-----------------------------------	----------

Oil Lubrication - T Seal	2900 rpm
---------------------------------	----------

Oil Lubrication - B/C/O Seal	1300 rpm
-------------------------------------	----------

Grease Lubrication - M/N Seal	1600 rpm
--------------------------------------	----------

Grease Lubrication - T Seal	2400 rpm
------------------------------------	----------

Grease Lubrication - B/C/O Seal	1300 rpm
--	----------

Engineering Bearing Attributes

Float	0.083 in 2.108 mm
--------------	----------------------

Shaft Tolerance	0.0020 in 0.051 mm
------------------------	-----------------------

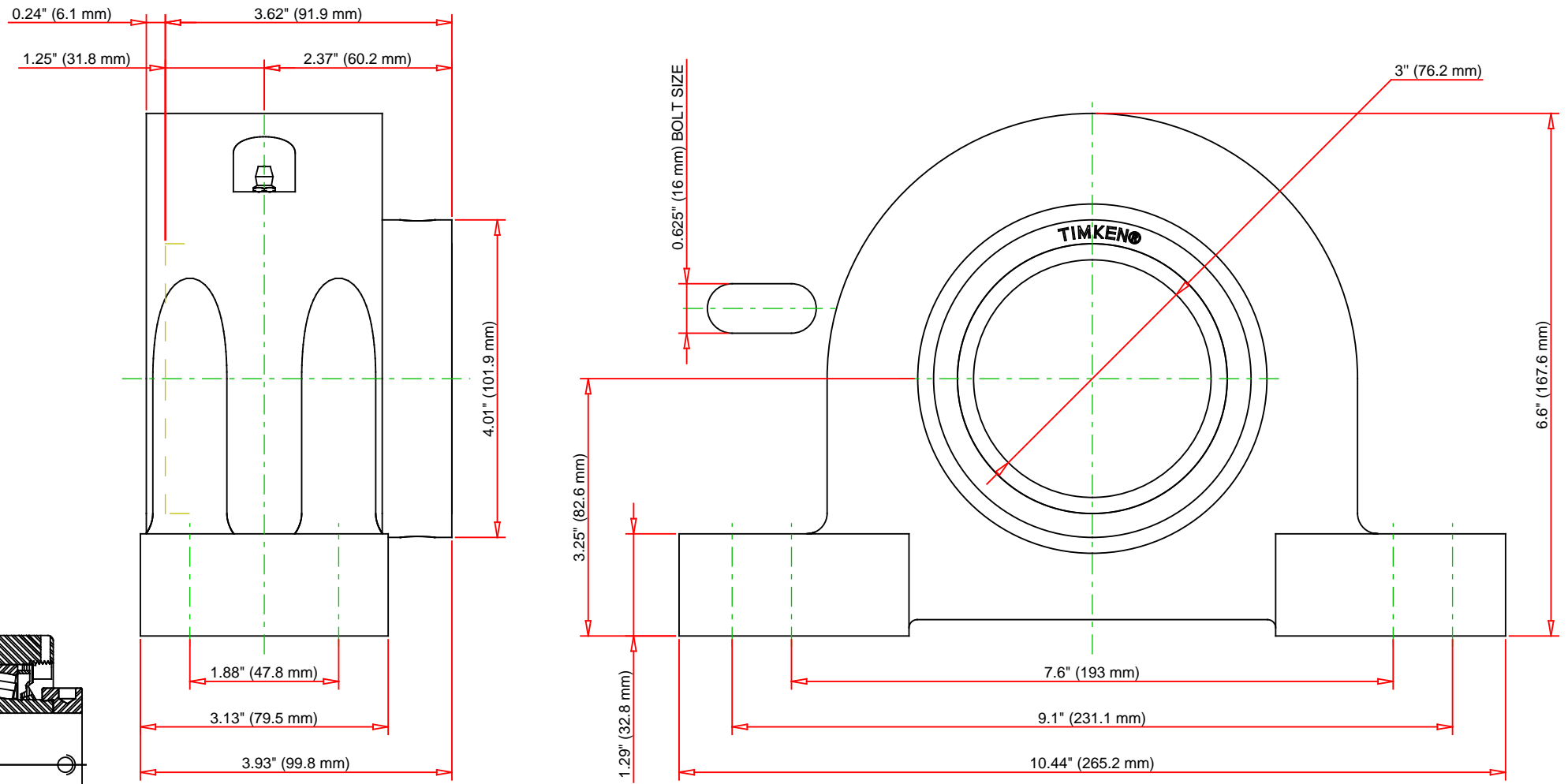
Engineering Internal Radial Clearance

Eng Internal Radial Clearance - Min	0.0020
--	--------

Eng Internal Radial Clearance - Max	0.0031
--	--------

Pre Install Clearance Min	0.0020 in 0.050 mm
----------------------------------	-----------------------

Pre Install Clearance Max	0.0031 in 0.080 mm
----------------------------------	-----------------------



Note: Section View not to Scale

C - Dynamic Load	49900	lbf	222000	N
C0 - Static Load	54100	lbf	240000	N
Weight	27	lb	12.2	kg
Max. Speed T-Seals & Grease	2400	rpm		
Rad. Clearance - Max.	0.0031			

TIMKEN
 THE TIMKEN COMPANY
 NORTH CANTON, OHIO USA

QMPF15J300S
 Eccentric Four-Bolt Pillow Block

Every reasonable effort has been made to ensure the accuracy of the information contained in this writing, but no liability is accepted for errors, omissions or for any other reason.

FOR DISCUSSION ONLY