



The Timken Company

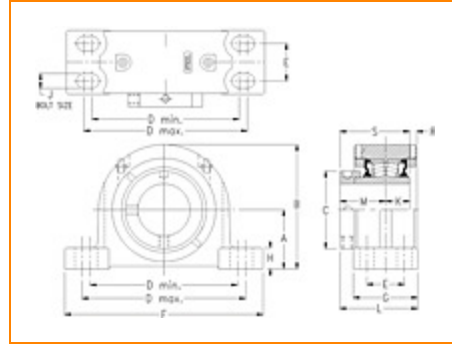
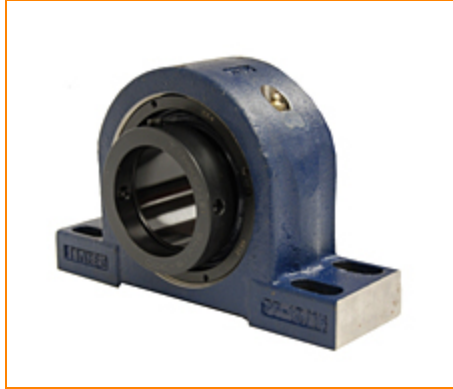
4500 Mt Pleasant St. NW

N. Canton, OH 44720

Phone: (234) 262-3000

E-Mail: CustomerCAD@timken.com • **Web site:** www.timken.com

Part Number QMPF22J407S, Eccentric Four-Bolt Pillow Block



[Specifications](#) | [Dimensions](#) | [Radial and Thrust Factors](#) | [Engineering Seal Speed](#) | [Engineering Bearing Attributes](#) | [Engineering Internal Radial Clearance](#)

Specifications

Engineering Group Mounted Bearing

Bearing Number 22222

Shaft Size 4 7/16 in

Shaft Size Type Imperial

Full Timken Part Number

- QMPF22J407SB
- QMPF22J407SC
- QMPF22J407SEB
- QMPF22J407SEC
- QMPF22J407SEM
- QMPF22J407SEN
- QMPF22J407SEO
- QMPF22J407SET
- QMPF22J407SM
- QMPF22J407SN
- QMPF22J407SO
- QMPF22J407ST



Locking Style	Eccentric
Housing Construction	Four-Bolt Pillow Block
UPC Code	0883450085328 0883450085335 0883450085359 0883450085366 0883450085373 0883450085380 0883450085397 0883450085403 0883450155885 0883450156615 0883450250825 0883450251242

Dimensions

Dimension A	4-3/4 in 120.7 mm
Dimension B	9.19 in 233.4 mm
Dimension C	6.3 in 160 mm
Dimension D Min	11.88 in 301.8 mm
Dimension D Max	14.5 in 368.3 mm
Dimension E	2-1/2 in 63.5 mm
Dimension F	16.13 in 409.7 mm
Dimension G	4.75 in 120.7 mm

Dimension H	1.58 in 40.1 mm
--------------------	--------------------

Dimension J (Bolt Size)	0.75 in 20 mm
--------------------------------	------------------

Dimension K	1.83 in 46.5 mm
--------------------	--------------------

Dimension L	6.08 in 154.4 mm
--------------------	---------------------

Dimension M	3.7 in 94 mm
--------------------	-----------------

Dimension R	0.17 in 4.3 mm
--------------------	-------------------

Dimension S	5.53 in 140.5 mm
--------------------	---------------------

Radial and Thrust Factors

C0 - Static Load	147000 lbf 653000 N
-------------------------	------------------------

C - Dynamic Load (Basic)	125000 lbf 555000 N
---------------------------------	------------------------

e - Geometry Factor	0.25
----------------------------	------

Y1 - Geometry Factor	2.73
-----------------------------	------

Y2 - Geometry Factor	4.06
-----------------------------	------

Engineering Seal Speed

Oil Lubrication - M/N Seal	900 rpm
-----------------------------------	---------

Oil Lubrication - T Seal	1700 rpm
---------------------------------	----------

Oil Lubrication - B/C/O Seal	600 rpm
-------------------------------------	---------

Grease Lubrication - M/N Seal	900 rpm
--------------------------------------	---------

Grease Lubrication - T Seal	1200 rpm
------------------------------------	----------

Grease Lubrication - B/C/O Seal	600 rpm
--	---------

Engineering Bearing Attributes

Float	0.083 in
	2.108 mm

Shaft Tolerance	0.0050 in
	0.127 mm

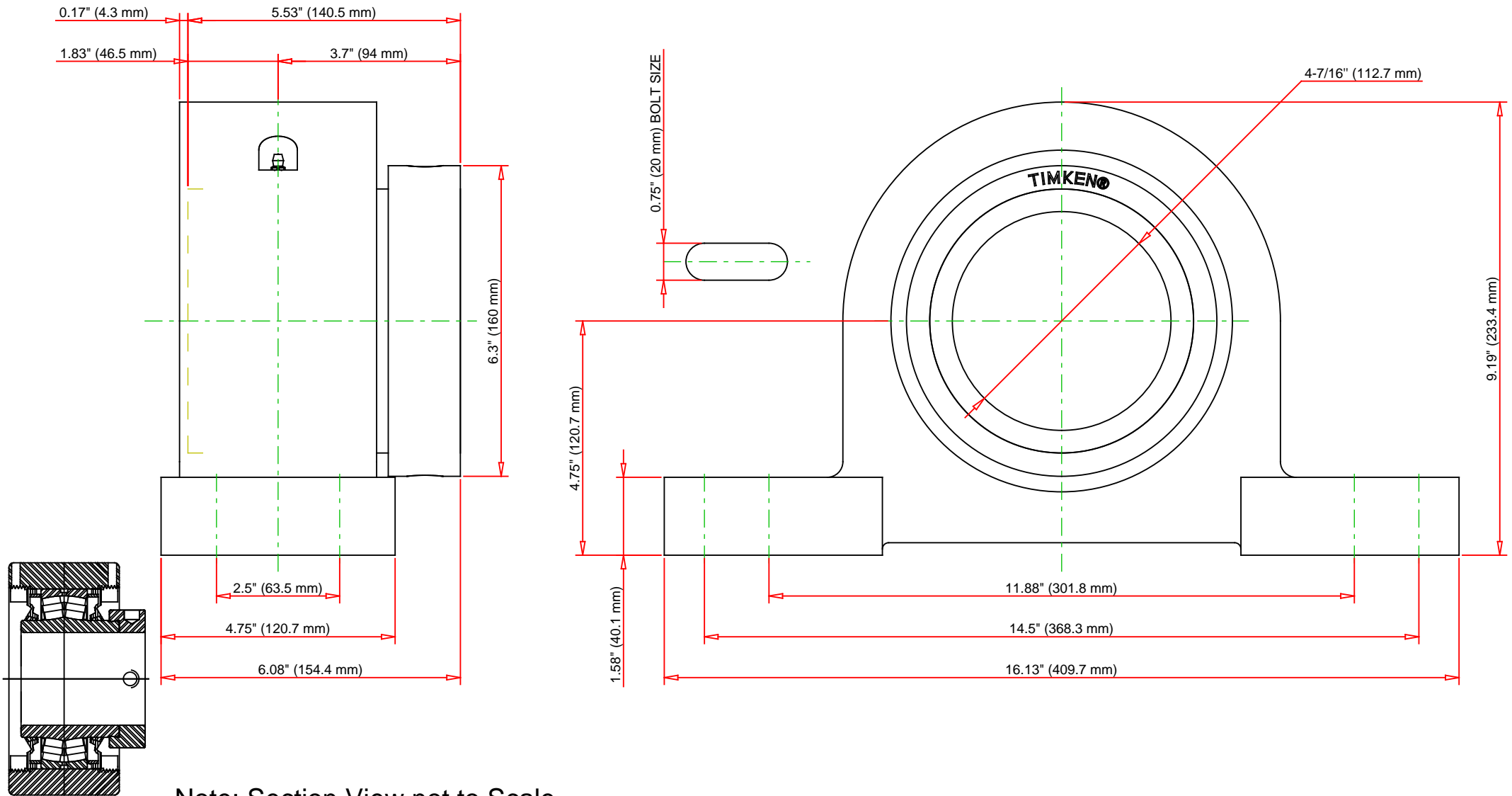
Engineering Internal Radial Clearance

Eng Internal Radial Clearance - Min	0.0030
--	--------

Eng Internal Radial Clearance - Max	0.0047
--	--------

Pre Install Clearance Min	0.0030 in
	0.075 mm

Pre Install Clearance Max	0.0047 in
	0.120 mm



C - Dynamic Load	125000	lbf	555000	N
C0 - Static Load	147000	lbf	653000	N
Weight	82	lb	37.2	kg
Max. Speed T-Seals & Grease	1200	rpm		
Rad. Clearance - Max.	0.0047			

TIMKEN

THE TIMKEN COMPANY
NORTH CANTON, OHIO USA

QMPF22J407S
Eccentric Four-Bolt Pillow Block

Every reasonable effort has been made to ensure the accuracy of the information contained in this writing, but no liability is accepted for errors, omissions or for any other reason.

FOR DISCUSSION ONLY