



The Timken Company

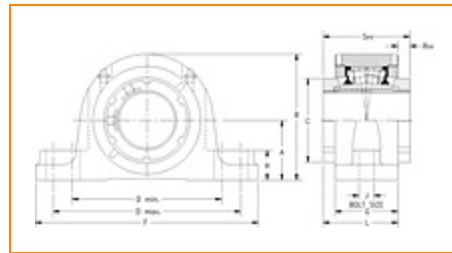
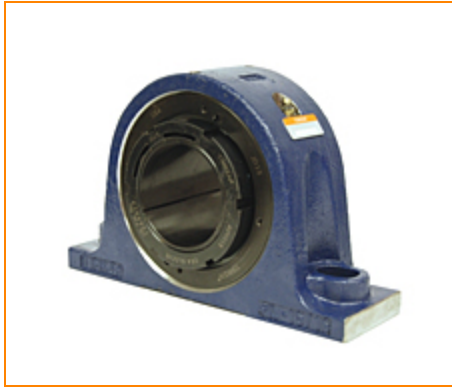
4500 Mt Pleasant St. NW

N. Canton, OH 44720

Phone: (234) 262-3000

E-Mail: CustomerCAD@timken.com • **Web site:** www.timken.com

Part Number QVVP19V080S, Double V-Lock Two-Bolt Pillow Block



[Specifications](#) | [Dimensions](#) | [Radial and Thrust Factors](#) | [Engineering Seal Speed](#) | [Engineering Bearing Attributes](#) | [Engineering Internal Radial Clearance](#)

Specifications

Engineering Group Mounted Bearing

Bearing Number 22219

Shaft Size 80 mm

Shaft Size Type Metric

Full Timken Part Number

- QVVP19V080SB
- QVVP19V080SC
- QVVP19V080SEB
- QVVP19V080SEC
- QVVP19V080SEM
- QVVP19V080SEN
- QVVP19V080SEO
- QVVP19V080SET
- QVVP19V080SM
- QVVP19V080SN
- QVVP19V080SO
- QVVP19V080ST



Locking Style	Double V-Lock
Housing Construction	Two-Bolt Pillow Block
UPC Code	0883450170840 0883450171038 0883450171212 0883450171595 0883450171786 0883450171977 0883450202367 0883450202749 0883450214780 0883450215169 0883450227209 0883450227582

Dimensions

Dimension A	3-3/4 in 95.3 mm
Dimension B	7.69 in 195.3 mm
Dimension C	4.9 in 124.5 mm
Dimension D Min	9.38 in 238.3 mm
Dimension D Max	11.25 in 285.8 mm
Dimension F	13-1/2 in 342.9 mm
Dimension G	3.41 in 86.6 mm
Dimension H	1.88 in 47.8 mm

Dimension J (Bolt Size)	0.875 in 24 mm
Dimension L	4.02 in 102.1 mm
Dimension RVV	0.61 in 15.5 mm
Dimension SVV	4.63 in 117.6 mm

Radial and Thrust Factors

C0 - Static Load	99000 lbf 441000 N
C - Dynamic Load (Basic)	86600 lbf 385000 N
e - Geometry Factor	0.23
Y1 - Geometry Factor	2.88
Y2 - Geometry Factor	4.29

Engineering Seal Speed

Oil Lubrication - M/N Seal	1300 rpm
Oil Lubrication - T Seal	2200 rpm
Oil Lubrication - B/C/O Seal	1000 rpm
Grease Lubrication - M/N Seal	1300 rpm
Grease Lubrication - T Seal	1800 rpm
Grease Lubrication - B/C/O Seal	950 rpm

Engineering Bearing Attributes

Float	0.083 in 2.108 mm
--------------	----------------------

Shaft Tolerance	0.0030 in 0.076 mm
------------------------	-----------------------

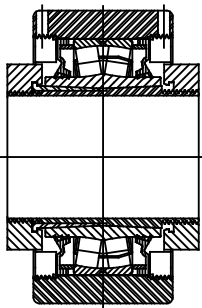
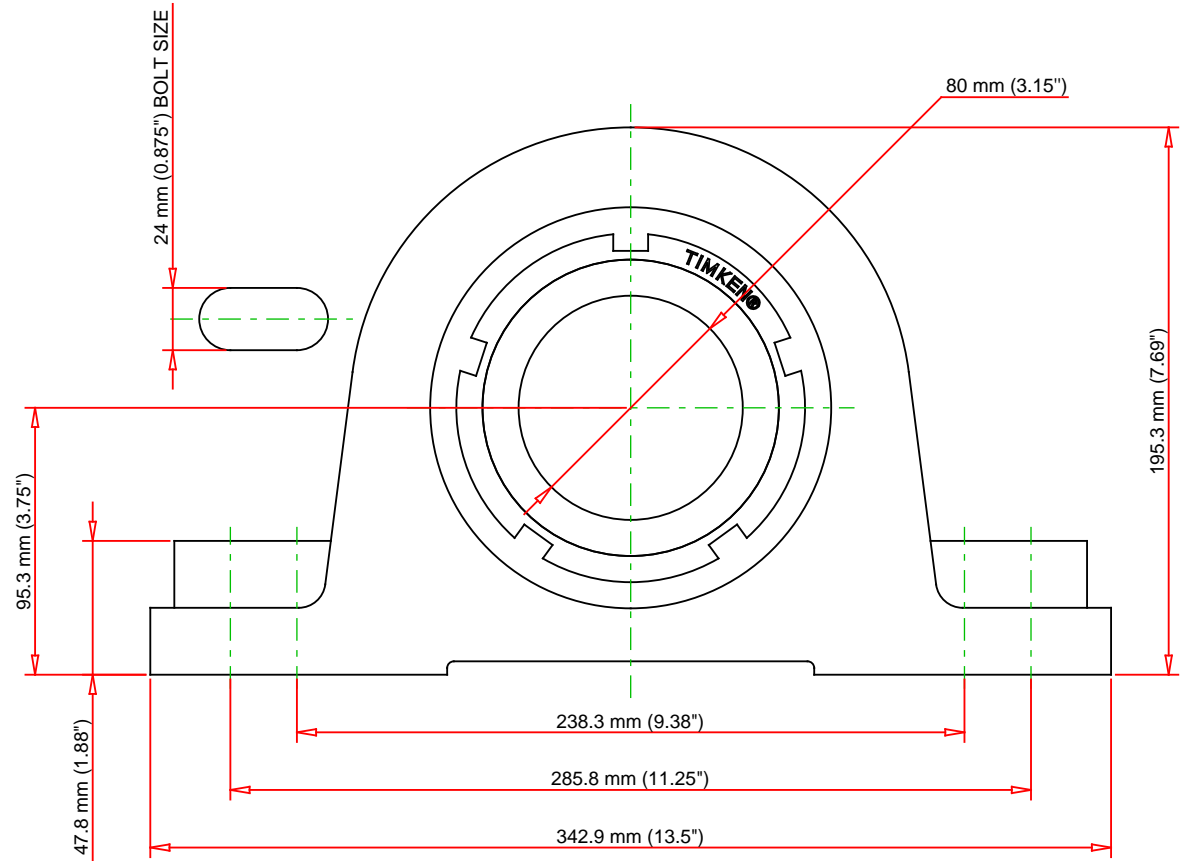
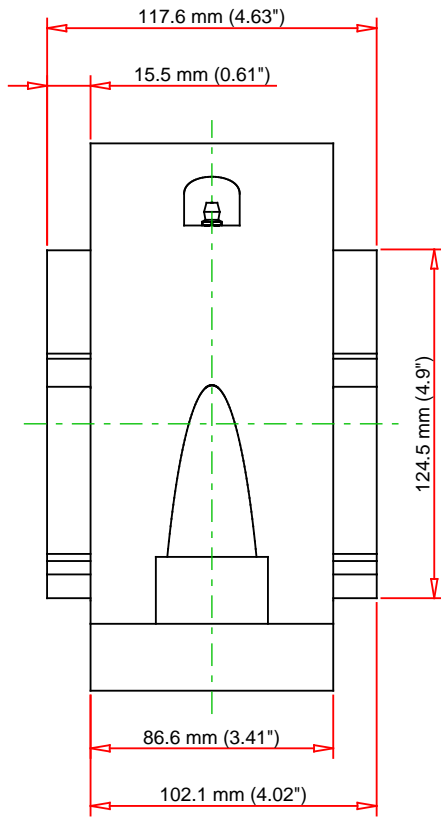
Engineering Internal Radial Clearance

Eng Internal Radial Clearance - Min	0.0043
--	--------

Eng Internal Radial Clearance - Max	0.0055
--	--------

Pre Install Clearance Min	0.0043 in 0.110 mm
----------------------------------	-----------------------

Pre Install Clearance Max	0.0055 in 0.140 mm
----------------------------------	-----------------------



Note: Section View not to Scale

C - Dynamic Load	86600	lbf	385000	N
C0 - Static Load	99000	lbf	441000	N
Weight	45	lb	20.4	kg
Max. Speed T-Seals & Grease	1800	rpm		
Rad. Clearance - Max.	0.0055			

TIMKEN

THE TIMKEN COMPANY
NORTH CANTON, OHIO USA

QVVP19V080S
Double V-Lock Two-Bolt Pillow Block

Every reasonable effort has been made to ensure the accuracy of the information contained in this writing, but no liability is accepted for errors, omissions or for any other reason.

FOR DISCUSSION ONLY