



The Timken Company

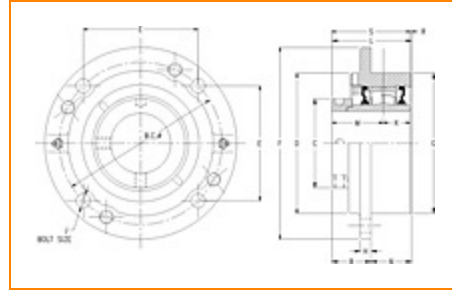
4500 Mt Pleasant St. NW

N. Canton, OH 44720

Phone: (234) 262-3000

E-Mail: CustomerCAD@timken.com • **Web site:** www.timken.com

Part Number QMC08J108S, Eccentric Piloted Flange Cartridge



[Specifications](#) | [Dimensions](#) | [Radial and Thrust Factors](#) | [Engineering Seal Speed](#) | [Engineering Bearing Attributes](#) | [Engineering Internal Radial Clearance](#)

Specifications

Engineering Group Mounted Bearing

Bearing Number 22208

Shaft Size 1 1/2 in

Shaft Size Type Imperial

Full Timken Part Number

- QMC08J108SB
- QMC08J108SC
- QMC08J108SEB
- QMC08J108SEC
- QMC08J108SEM
- QMC08J108SEN
- QMC08J108SEO
- QMC08J108SET
- QMC08J108SM
- QMC08J108SN
- QMC08J108SO
- QMC08J108ST



Locking Style	Eccentric
Housing Construction	Piloted Flange Cartridge

UPC Code	0883450058322
	0883450058339
	0883450058353
	0883450058360
	0883450058377
	0883450058384
	0883450058391
	0883450058407
	0883450165556
	0883450165976
0883450257770	
0883450258159	

Dimensions

Dimension BC	4.38 in 111.3 mm
---------------------	---------------------

Dimension B Exp	2.04 in 51.8 mm
------------------------	--------------------

Dimension B Fix	1.96 in 49.8 mm
------------------------	--------------------

Dimension C	2.38 in 60.5 mm
--------------------	--------------------

Dimension D	3.63 in 92.2 mm
--------------------	--------------------

Dimension E	3.09 in 78.5 mm
--------------------	--------------------

Dimension F	5 1/4 in 133.4 mm
--------------------	----------------------

Dimension G	3.625 in 92.1 mm
--------------------	---------------------

Dimension H	0.5 in 12.7 mm
Dimension J (Bolt Size)	0.438 in 10 mm
Dimension K	1 in 25.4 mm
Dimension L Exp	2.98 in 75.7 mm
Dimension L Fix	2.9 in 73.7 mm
Dimension M	1.75 in 44.5 mm
Dimension N	0.94 in 23.9 mm
Dimension R	0.15 in 3.8 mm
Dimension S	2.75 in 69.9 mm

Radial and Thrust Factors

C0 - Static Load	22400 lbf 99700 N
C - Dynamic Load (Basic)	23400 lbf 104000 N
e - Geometry Factor	0.27
Y1 - Geometry Factor	2.47
Y2 - Geometry Factor	3.67

Engineering Seal Speed

Oil Lubrication - M/N Seal	2700 rpm
-----------------------------------	----------

Oil Lubrication - T Seal	4500 rpm
---------------------------------	----------

Oil Lubrication - B/C/O Seal	1950 rpm
-------------------------------------	----------

Grease Lubrication - M/N Seal	2700 rpm
--------------------------------------	----------

Grease Lubrication - T Seal	4000 rpm
------------------------------------	----------

Grease Lubrication - B/C/O Seal	1950 rpm
--	----------

Engineering Bearing Attributes

Float	0.050 in 1.270 mm
--------------	----------------------

Shaft Tolerance	0.0010 in 0.025 mm
------------------------	-----------------------

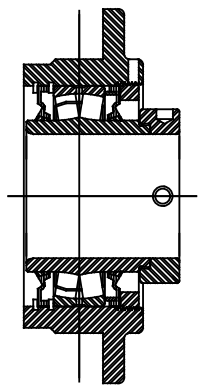
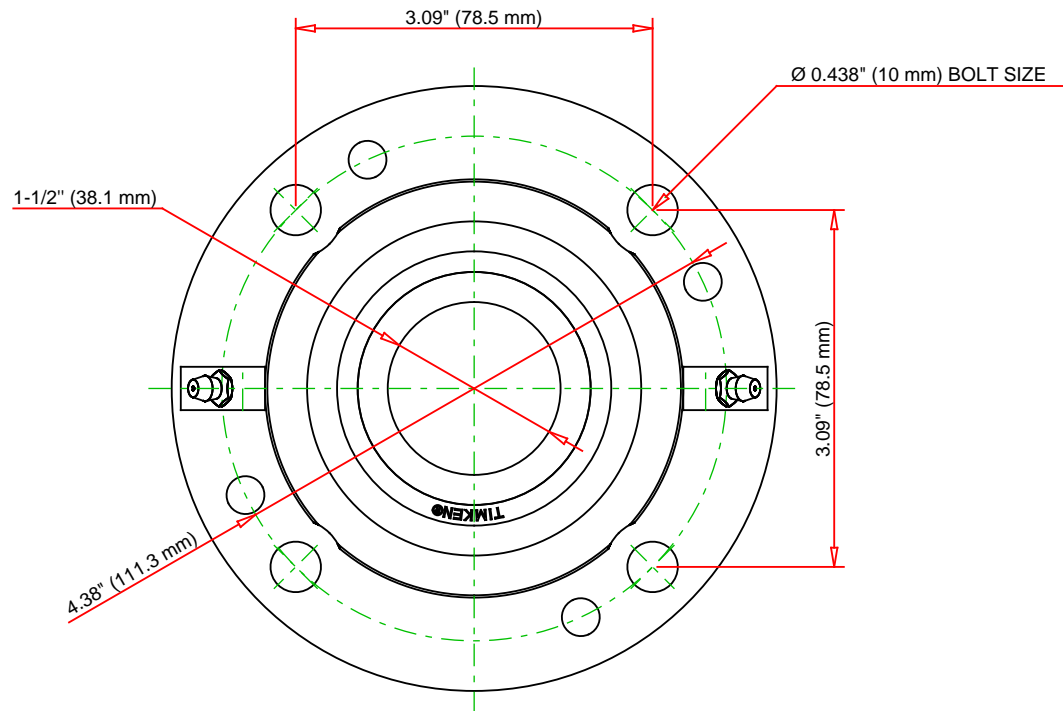
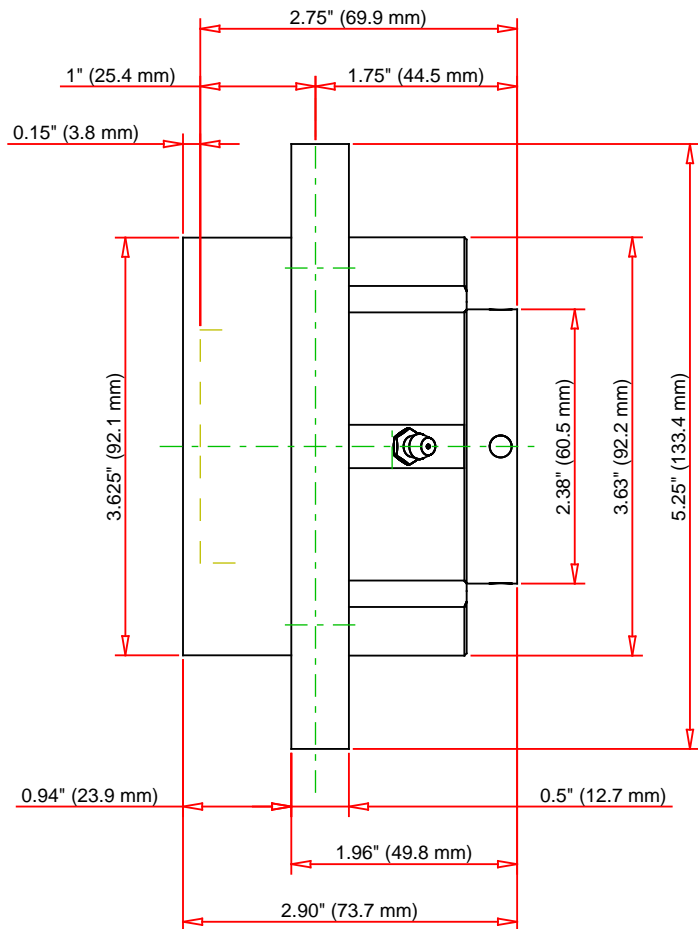
Engineering Internal Radial Clearance

Eng Internal Radial Clearance - Min	0.0012
--	--------

Eng Internal Radial Clearance - Max	0.0018
--	--------

Pre Install Clearance Min	0.0012 in 0.030 mm
----------------------------------	-----------------------

Pre Install Clearance Max	0.0018 in 0.045 mm
----------------------------------	-----------------------



Note: Section View not to Scale

C - Dynamic Load	23400	lbf	104000	N
C0 - Static Load	22400	lbf	99700	N
Weight	8	lb	3.6	kg
Max. Speed T-Seals & Grease	4000	rpm		
Rad. Clearance - Max.	0.0018			

TIMKEN

THE TIMKEN COMPANY
NORTH CANTON, OHIO USA

QMC08J108S
Eccentric Piloted Flange Cartridge

Every reasonable effort has been made to ensure the accuracy of the information contained in this writing, but no liability is accepted for errors, omissions or for any other reason.

FOR DISCUSSION ONLY