



The Timken Company

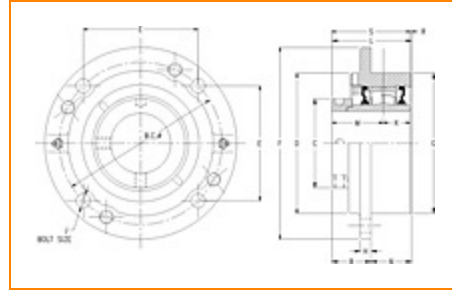
4500 Mt Pleasant St. NW

N. Canton, OH 44720

Phone: (234) 262-3000

E-Mail: CustomerCAD@timken.com • **Web site:** www.timken.com

Part Number QMC10J115S, Eccentric Piloted Flange Cartridge



[Specifications](#) | [Dimensions](#) | [Radial and Thrust Factors](#) | [Engineering Seal Speed](#) | [Engineering Bearing Attributes](#) | [Engineering Internal Radial Clearance](#)

Specifications

Engineering Group Mounted Bearing

Bearing Number 22210

Shaft Size 1 15/16 in

Shaft Size Type Imperial

Full Timken Part Number

- QMC10J115SB
- QMC10J115SC
- QMC10J115SEB
- QMC10J115SEC
- QMC10J115SEM
- QMC10J115SEN
- QMC10J115SEO
- QMC10J115SET
- QMC10J115SM
- QMC10J115SN
- QMC10J115SO
- QMC10J115ST



Locking Style	Eccentric
Housing Construction	Piloted Flange Cartridge
UPC Code	0883450058728 0883450058735 0883450058759 0883450058766 0883450058773 0883450058780 0883450058797 0883450058803 0883450165587 0883450166003 0883450257824 0883450258203

Dimensions

Dimension BC	5.38 in 136.7 mm
Dimension B Exp	2.07 in 52.6 mm
Dimension B Fix	1.99 in 50.5 mm
Dimension C	2.76 in 70.1 mm
Dimension D	4.47 in 113.5 mm
Dimension E	3.8 in 96.5 mm
Dimension F	6.38 in 162.1 mm
Dimension G	4.5 in 114.3 mm

Dimension H	0.63 in 16 mm
Dimension J (Bolt Size)	0.438 in 10 mm
Dimension K	1 in 25.4 mm
Dimension L Exp	3.13 in 79.5 mm
Dimension L Fix	3.05 in 77.5 mm
Dimension M	1.89 in 49.5 mm
Dimension N	1.06 in 26.9 mm
Dimension R	0.18 in 4.6 mm
Dimension S	2.87 in 72.9 mm

Radial and Thrust Factors

C0 - Static Load	26600 lbf 118000 N
C - Dynamic Load (Basic)	26300 lbf 117000 N
e - Geometry Factor	0.24
Y1 - Geometry Factor	2.84
Y2 - Geometry Factor	4.23

Engineering Seal Speed

Oil Lubrication - M/N Seal	2400 rpm
-----------------------------------	----------

Oil Lubrication - T Seal	4200 rpm
---------------------------------	----------

Oil Lubrication - B/C/O Seal	1800 rpm
-------------------------------------	----------

Grease Lubrication - M/N Seal	2400 rpm
--------------------------------------	----------

Grease Lubrication - T Seal	3550 rpm
------------------------------------	----------

Grease Lubrication - B/C/O Seal	1800 rpm
--	----------

Engineering Bearing Attributes

Float	0.050 in 1.270 mm
--------------	----------------------

Shaft Tolerance	0.0015 in 0.038 mm
------------------------	-----------------------

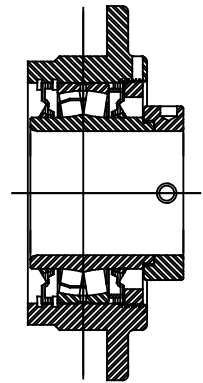
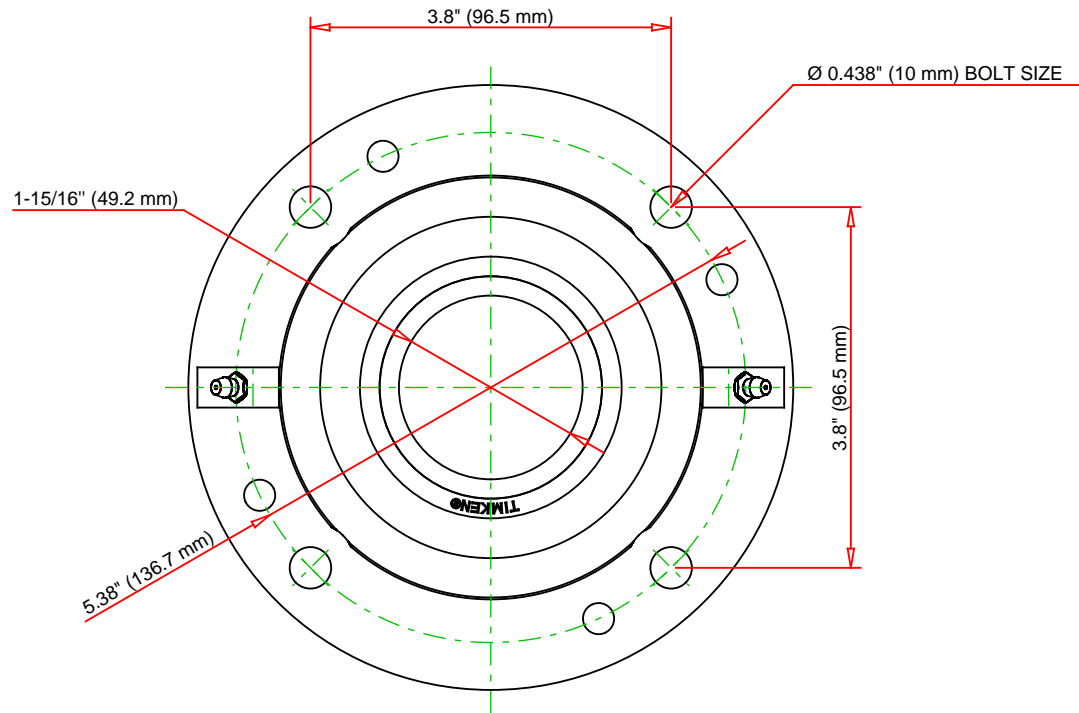
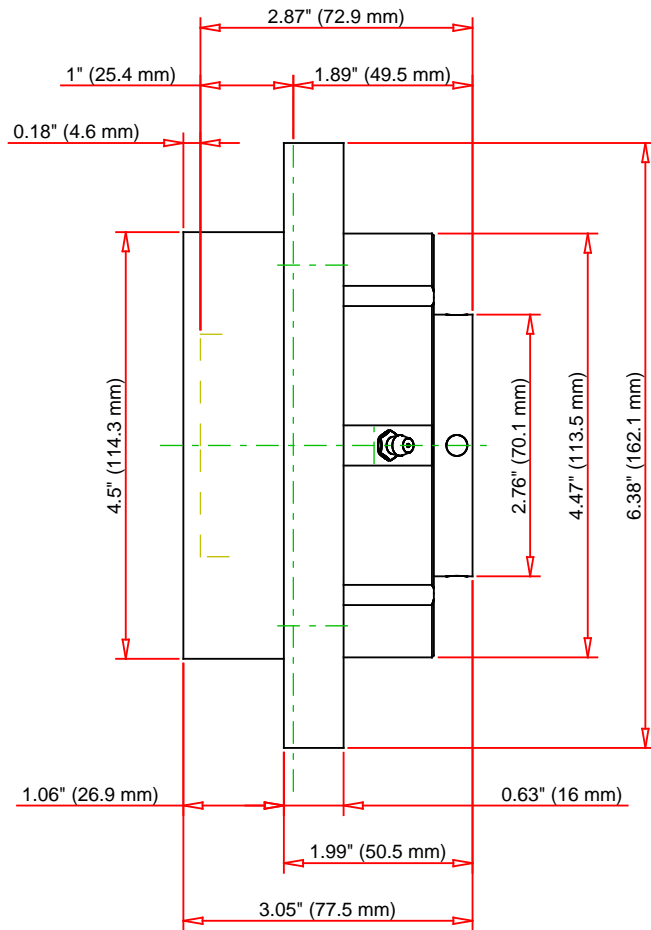
Engineering Internal Radial Clearance

Eng Internal Radial Clearance - Min	0.0016
--	--------

Eng Internal Radial Clearance - Max	0.0026
--	--------

Pre Install Clearance Min	0.0016 in 0.040 mm
----------------------------------	-----------------------

Pre Install Clearance Max	0.0026 in 0.065 mm
----------------------------------	-----------------------



Note: Section View not to Scale

C - Dynamic Load	26300	lbf	117000	N
C0 - Static Load	26600	lbf	118000	N
Weight	10	lb	4.5	kg
Max. Speed T-Seals & Grease	3550	rpm		
Rad. Clearance - Max.	0.0026			

TIMKEN

THE TIMKEN COMPANY
NORTH CANTON, OHIO USA

QMC10J115S
Eccentric Piloted Flange Cartridge

Every reasonable effort has been made to ensure the accuracy of the information contained in this writing, but no liability is accepted for errors, omissions or for any other reason.

FOR DISCUSSION ONLY