



The Timken Company

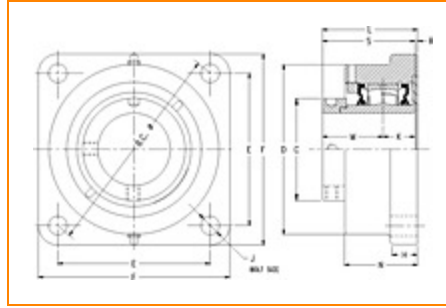
4500 Mt Pleasant St. NW

N. Canton, OH 44720

Phone: (234) 262-3000

E-Mail: CustomerCAD@timken.com • **Web site:** www.timken.com

Part Number QMFL15J300S, Eccentric Four Bolt Square Flange Block



[Specifications](#) | [Dimensions](#) | [Radial and Thrust Factors](#) | [Engineering Seal Speed](#) | [Engineering Bearing Attributes](#) | [Engineering Internal Radial Clearance](#)

Specifications

Engineering Group Mounted Bearing

Bearing Number 22215

Shaft Size 3 in

Shaft Size Type Imperial

Full Timken Part Number

- QMFL15J300SB
- QMFL15J300SC
- QMFL15J300SEB
- QMFL15J300SEC
- QMFL15J300SEM
- QMFL15J300SEN
- QMFL15J300SEO
- QMFL15J300SET
- QMFL15J300SM
- QMFL15J300SN
- QMFL15J300SO



QMFL15J300ST

Locking Style

Eccentric

Housing Construction

Four-Bolt Square Flange

UPC Code

0883450071123
 0883450071130
 0883450071154
 0883450071161
 0883450071178
 0883450071185
 0883450071192
 0883450071208
 0883450163033
 0883450163378
 0883450255394
 0883450255738

Dimensions**Dimension BC**

7.88 in
 200.2 mm

Dimension C

4.01 in
 101.9 mm

Dimension D

6.63 in
 168.4 mm

Dimension E

5.56 in
 141.2 mm

Dimension F

7.19 in
 182.6 mm

Dimension H

1.06 in
 26.9 mm

Dimension J (Bolt Size)

0.75 in
 20 mm

Dimension K

1.25 in
 31.8 mm

Dimension L Exp	3.85 in 97.8 mm
------------------------	--------------------

Dimension L Fix	3.77 in 95.8 mm
------------------------	--------------------

Dimension M	2.37 in 60.2 mm
--------------------	--------------------

Dimension N	2.93 in 74.4 mm
--------------------	--------------------

Dimension R	0.15 in 3.8 mm
--------------------	-------------------

Dimension S	3.62 in 91.9 mm
--------------------	--------------------

Radial and Thrust Factors

C0 - Static Load	54100 lbf 240000 N
-------------------------	-----------------------

C - Dynamic Load (Basic)	49900 lbf 222000 N
---------------------------------	-----------------------

e - Geometry Factor	0.22
----------------------------	------

Y1 - Geometry Factor	3.01
-----------------------------	------

Y2 - Geometry Factor	4.48
-----------------------------	------

Engineering Seal Speed

Oil Lubrication - M/N Seal	1600 rpm
-----------------------------------	----------

Oil Lubrication - T Seal	2900 rpm
---------------------------------	----------

Oil Lubrication - B/C/O Seal	1300 rpm
-------------------------------------	----------

Grease Lubrication - M/N Seal	1600 rpm
--------------------------------------	----------

Grease Lubrication - T Seal	2400 rpm
------------------------------------	----------

Grease Lubrication - B/C/O Seal	1300 rpm
--	----------

Engineering Bearing Attributes

Float	0.083 in 2.108 mm
--------------	----------------------

Shaft Tolerance	0.0020 in 0.051 mm
------------------------	-----------------------

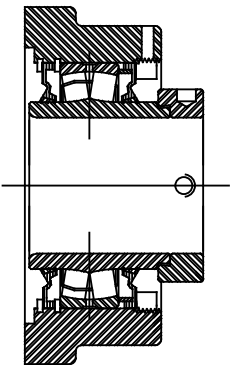
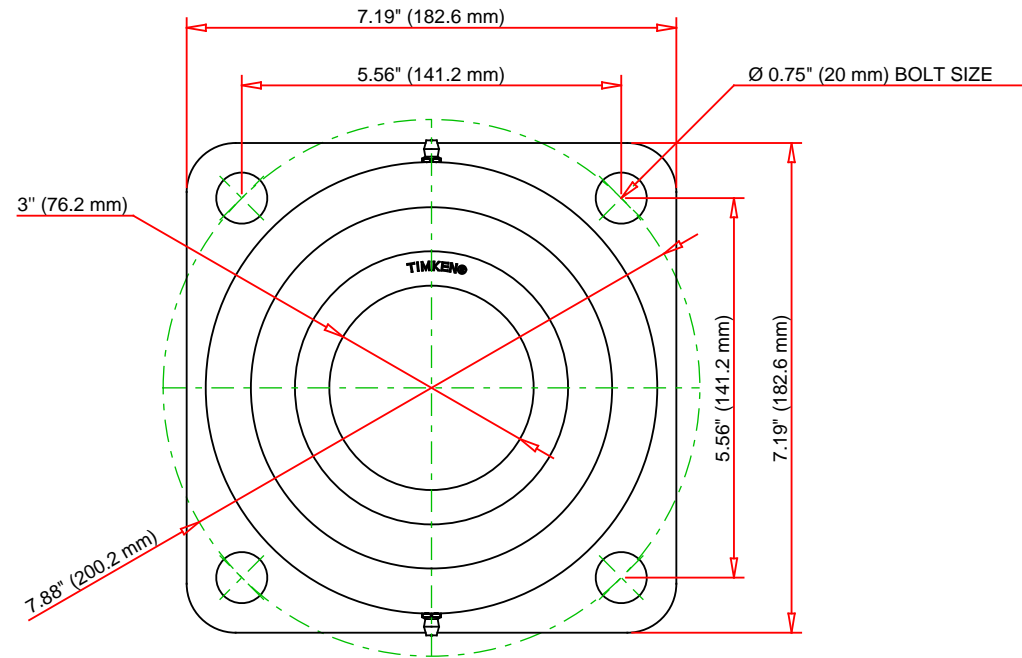
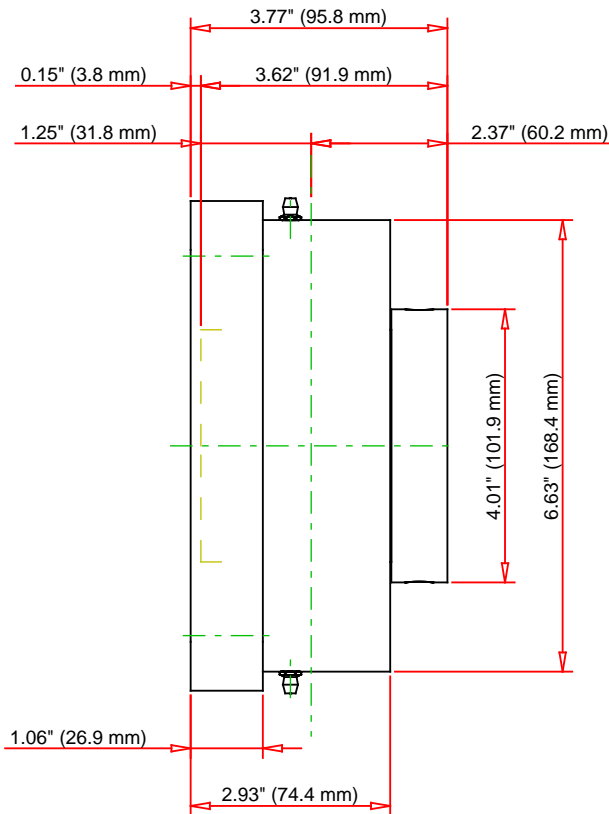
Engineering Internal Radial Clearance

Eng Internal Radial Clearance - Min	0.002
--	-------

Eng Internal Radial Clearance - Max	0.0031
--	--------

Pre Install Clearance Min	0.0020 in 0.050 mm
----------------------------------	-----------------------

Pre Install Clearance Max	0.0031 in 0.080 mm
----------------------------------	-----------------------



Note: Section View not to Scale

C - Dynamic Load	49900	lbf	222000	N
C0 - Static Load	54100	lbf	240000	N
Weight	23	lb	10.4	kg
Max. Speed T-Seals & Grease	2400	rpm		
Rad. Clearance - Max.	0.0031			

TIMKEN

THE TIMKEN COMPANY
NORTH CANTON, OHIO USA

QMFL15J300S

Eccentric Four Bolt Square Flange
Block

Every reasonable effort has been made to ensure the accuracy of the information contained in this writing, but no liability is accepted for errors, omissions or for any other reason.

FOR DISCUSSION ONLY