



The Timken Company

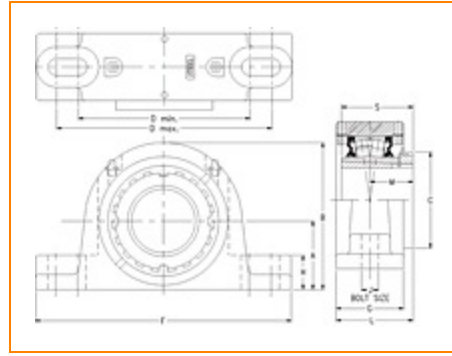
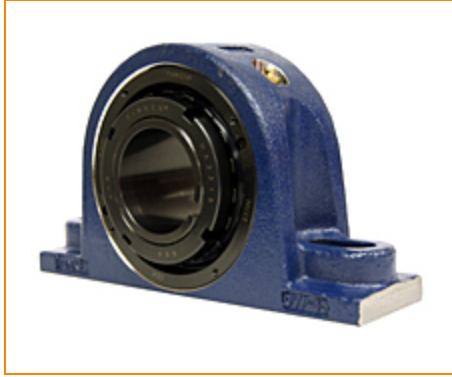
4500 Mt Pleasant St. NW

N. Canton, OH 44720

Phone: (234) 262-3000

E-Mail: CustomerCAD@timken.com • **Web site:** www.timken.com

Part Number TAPA20K307S, Tapered Adapter Two-Bolt Pillow Block



[Specifications](#) | [Dimensions](#) | [Radial and Thrust Factors](#) | [Engineering Seal Speed](#) | [Engineering Bearing Attributes](#) | [Engineering Internal Radial Clearance](#)

Specifications

Engineering Group Mounted Bearing

Bearing Number 22220

Shaft Size 3 7/16 in

Shaft Size Type Imperial

Full Timken Part Number

- TAPA20K307SB
- TAPA20K307SC
- TAPA20K307SEB
- TAPA20K307SEC
- TAPA20K307SEM
- TAPA20K307SEN
- TAPA20K307SEO
- TAPA20K307SET
- TAPA20K307SM
- TAPA20K307SN
- TAPA20K307SO
- TAPA20K307ST



Locking Style	Tapered Adapter
Housing Construction	Two-Bolt Pillow Block
UPC Code	0883450125673 0883450125680 0883450125703 0883450125710 0883450125727 0883450125734 0883450125741 0883450125758 0883450197762 0883450197960 0883450275262 0883450275460

Dimensions

Dimension A	4-1/2 in 114.3 mm
Dimension B	8.63 in 219.2 mm
Dimension C	5.12 in 130 mm
Dimension D Min	10.88 in 276.4 mm
Dimension D Max	13.13 in 333.5 mm
Dimension F	14.5 in 368.3 mm
Dimension G	3.42 in 86.9 mm
Dimension H	1.63 in 41.4 mm

Dimension J (Bolt Size)	0.875 in 24 mm
Dimension L	4.03 in 102.4 mm
Dimension M	2.3 in 58.4 mm
Dimension S	3.82 in 97 mm

Radial and Thrust Factors

C0 - Static Load	113000 lbf 502000 N
C - Dynamic Load (Basic)	97700 lbf 435000 N
e - Geometry Factor	0.24
Y1 - Geometry Factor	2.85
Y2 - Geometry Factor	4.24

Engineering Seal Speed

Oil Lubrication - M/N Seal	1200 rpm
Oil Lubrication - T Seal	2000 rpm
Oil Lubrication - B/C/O Seal	900 rpm
Grease Lubrication - M/N Seal	1200 rpm
Grease Lubrication - T Seal	1600 rpm
Grease Lubrication - B/C/O Seal	900 rpm

Engineering Bearing Attributes

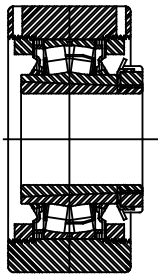
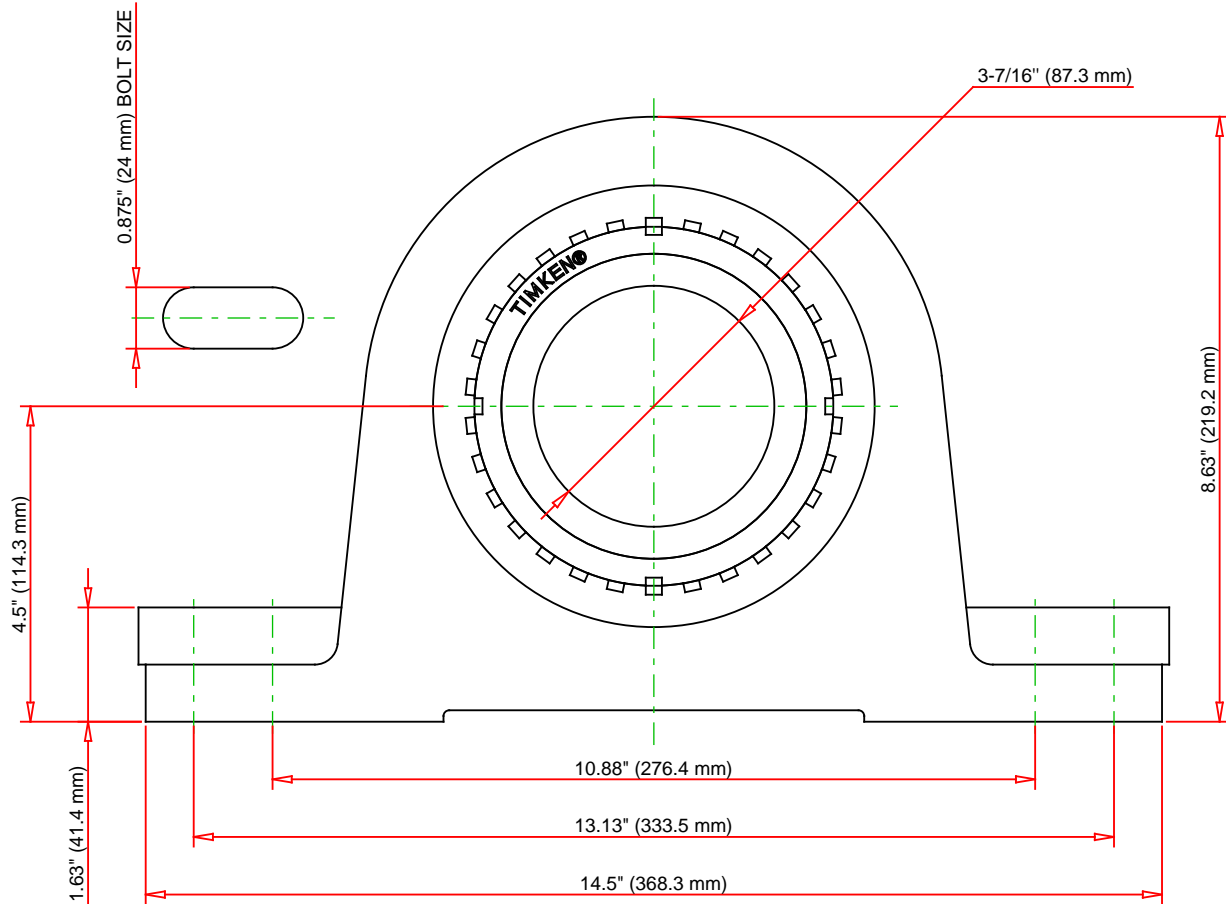
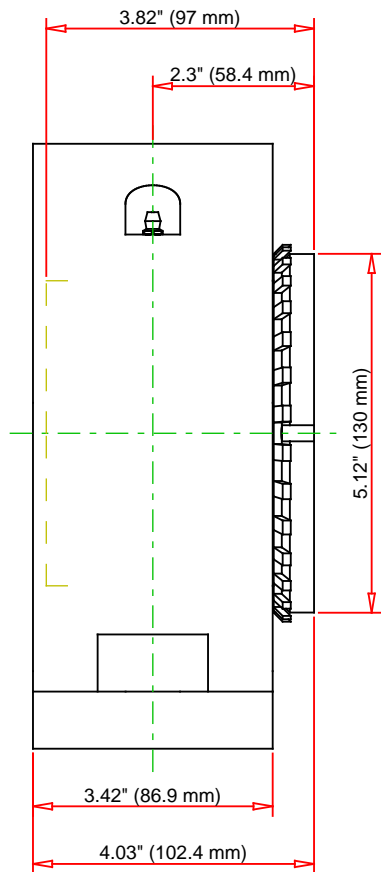
Float	0.083 in 2.108 mm
--------------	----------------------

Shaft Tolerance	0.0040 in 0.102 mm
------------------------	-----------------------

Engineering Internal Radial Clearance

Pre Install Clearance Min	0.0043 in 0.110 mm
----------------------------------	-----------------------

Pre Install Clearance Max	0.0055 in 0.140 mm
----------------------------------	-----------------------



Note: Section View not to Scale

C - Dynamic Load	97700	lbf	435000	N
C0 - Static Load	113000	lbf	502000	N
Weight	65	lb	29.5	kg
Max. Speed T-Seals & Grease	1600	rpm		
Rad. Clearance - Max.	0.0055			

TIMKEN

THE TIMKEN COMPANY
NORTH CANTON, OHIO USA

TAPA20K307S

Tapered Adapter Two-Bolt Pillow
Block

Every reasonable effort has been made to ensure the accuracy of the information contained in this writing, but no liability is accepted for errors, omissions or for any other reason.

FOR DISCUSSION ONLY