



The Timken Company

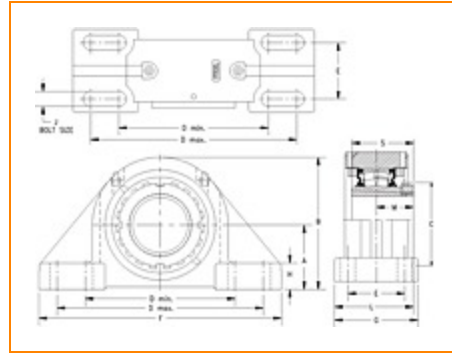
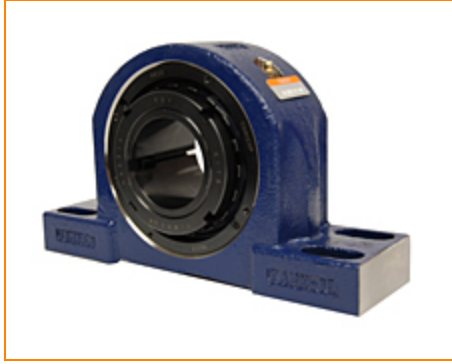
4500 Mt Pleasant St. NW

N. Canton, OH 44720

Phone: (234) 262-3000

E-Mail: CustomerCAD@timken.com • **Web site:** www.timken.com

Part Number TAPK20K307S, Tapered Adapter Four-Bolt Pillow Block



[Specifications](#) | [Dimensions](#) | [Radial and Thrust Factors](#) | [Engineering Seal Speed](#) | [Engineering Bearing Attributes](#) | [Engineering Internal Radial Clearance](#)

Specifications

Engineering Group Mounted Bearing

Bearing Number 22220

Shaft Size 3 7/16 in

Shaft Size Type Imperial

Full Timken Part Number

- TAPK20K307SB
- TAPK20K307SC
- TAPK20K307SEB
- TAPK20K307SEC
- TAPK20K307SEM
- TAPK20K307SEN
- TAPK20K307SEO
- TAPK20K307SET
- TAPK20K307SM
- TAPK20K307SN
- TAPK20K307SO
- TAPK20K307ST



Locking Style	Tapered Adapter
Housing Construction	Four-Bolt Pillow Block
UPC Code	0883450131674 0883450131681 0883450131704 0883450131711 0883450131728 0883450131735 0883450131742 0883450131759 0883450198967 0883450199162 0883450276603 0883450276801

Dimensions

Dimension A	5 in 127 mm
Dimension B	9.44 in 239.8 mm
Dimension C	5.12 in 130 mm
Dimension D Min	12.5 in 317.5 mm
Dimension D Max	14 in 355.6 mm
Dimension E	3.5 in 88.9 mm
Dimension F	16.75 in 425.5 mm
Dimension G	5.5 in 139.7 mm

Dimension H	1.63 in 41.4 mm
Dimension J (Bolt Size)	0.875 in 24 mm
Dimension L	5.05 in 128.3 mm
Dimension M	2.3 in 58.4 mm
Dimension S	3.82 in 97 mm

Radial and Thrust Factors

C0 - Static Load	113000 lbf 502000 N
C - Dynamic Load (Basic)	97700 lbf 435000 N
e - Geometry Factor	0.24
Y1 - Geometry Factor	2.85
Y2 - Geometry Factor	4.24

Engineering Seal Speed

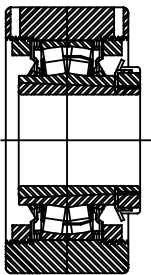
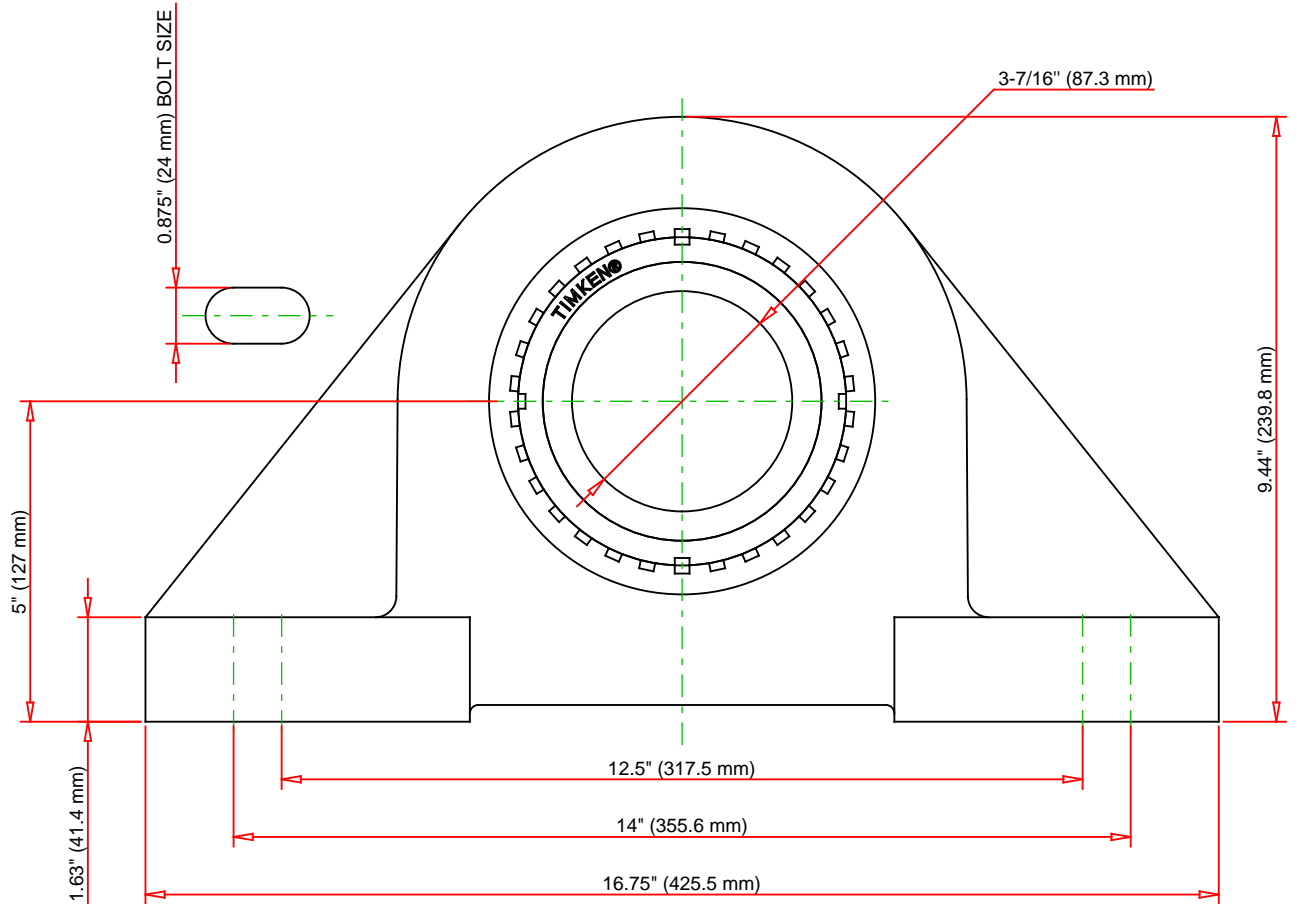
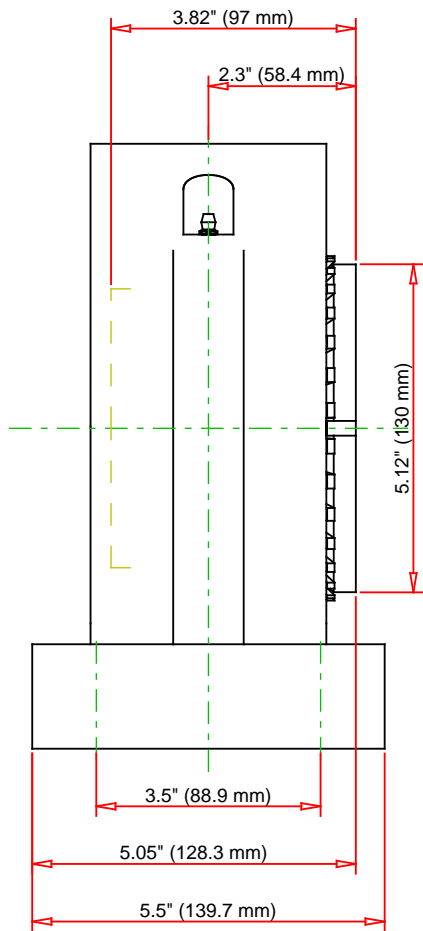
Oil Lubrication - M/N Seal	1200 rpm
Oil Lubrication - T Seal	2000 rpm
Oil Lubrication - B/C/O Seal	900 rpm
Grease Lubrication - M/N Seal	1200 rpm
Grease Lubrication - T Seal	1600 rpm
Grease Lubrication - B/C/O Seal	900 rpm

Engineering Bearing Attributes

Float	0.083 in 2.108 mm
Shaft Tolerance	0.0040 in 0.102 mm

Engineering Internal Radial Clearance

Pre Install Clearance Min	0.0043 in 0.109 mm
Pre Install Clearance Max	0.0055 in 0.140 mm



Note: Section View not to Scale

C - Dynamic Load	97700	lbf	435000	N
C0 - Static Load	113000	lbf	502000	N
Weight	70	lb	31.8	kg
Max. Speed T-Seals & Grease	1600	rpm		
Rad. Clearance - Max.				

TIMKEN

THE TIMKEN COMPANY
NORTH CANTON, OHIO USA

TAPK20K307S

Tapered Adapter Four-Bolt Pillow
Block

Every reasonable effort has been made to ensure the accuracy of the information contained in this writing, but no liability is accepted for errors, omissions or for any other reason.

FOR DISCUSSION ONLY