



The Timken Company

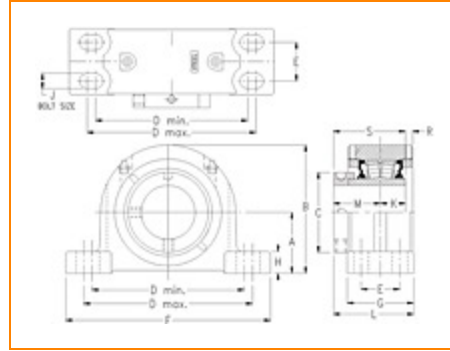
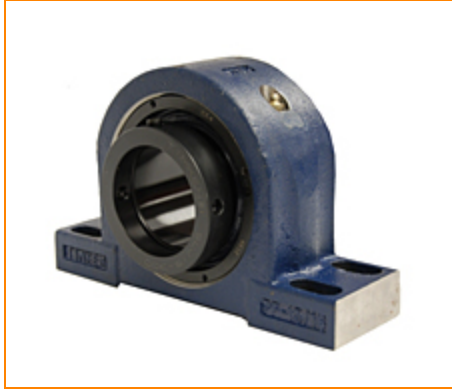
4500 Mt Pleasant St. NW

N. Canton, OH 44720

Phone: (234) 262-3000

E-Mail: CustomerCAD@timken.com • **Web site:** www.timken.com

Part Number QMPH30J507S, Eccentric Four-Bolt Pillow Block



[Specifications](#) | [Dimensions](#) | [Radial and Thrust Factors](#) | [Engineering Seal Speed](#) | [Engineering Bearing Attributes](#) | [Engineering Internal Radial Clearance](#)

Specifications

Engineering Group Mounted Bearing

Bearing Number 23230

Shaft Size 5 7/16 in

Shaft Size Type Imperial

Full Timken Part Number

- QMPH30J507SB
- QMPH30J507SC
- QMPH30J507SEB
- QMPH30J507SEC
- QMPH30J507SEM
- QMPH30J507SEN
- QMPH30J507SEO
- QMPH30J507SET
- QMPH30J507SM
- QMPH30J507SN
- QMPH30J507SO
- QMPH30J507ST



Locking Style	Eccentric
Housing Construction	Four-Bolt Pillow Block
UPC Code	0883450033930 0883450033947 0883450138789 0883450138796 0883450138802 0883450138819 0883450138840 0883450138857 0883450157568 0883450157964 0883450251815 0883450251976

Dimensions

Dimension A	6.688 in 169.9 mm
Dimension B	13.02 in 330.7 mm
Dimension C	8.07 in 205 mm
Dimension D Min	17.38 in 441.5 mm
Dimension D Max	19.13 in 485.9 mm
Dimension E	3-3/4 in 95.3 mm
Dimension F	22 in 558.8 mm
Dimension G	6.75 in 171.5 mm

Dimension H	3 in 76.2 mm
Dimension J (Bolt Size)	1 in 24 mm
Dimension K	2.99 in 75.9 mm
Dimension L	7.84 in 199.1 mm
Dimension M	4.57 in 116.1 mm
Dimension R	0.2 in 5.1 mm
Dimension S	7.56 in 192 mm

Radial and Thrust Factors

C0 - Static Load	372000 lbf 1660000 N
C - Dynamic Load (Basic)	286000 lbf 1270000 N
e - Geometry Factor	0.32
Y1 - Geometry Factor	2.08
Y2 - Geometry Factor	3.10

Engineering Seal Speed

Oil Lubrication - M/N Seal	650 rpm
Oil Lubrication - T Seal	950 rpm
Oil Lubrication - B/C/O Seal	350 rpm

Grease Lubrication - M/N Seal	600 rpm
--------------------------------------	---------

Grease Lubrication - T Seal	800 rpm
------------------------------------	---------

Grease Lubrication - B/C/O Seal	350 rpm
--	---------

Engineering Bearing Attributes

Float	0.083 in
	2.108 mm

Shaft Tolerance	0.0050 in
	0.127 mm

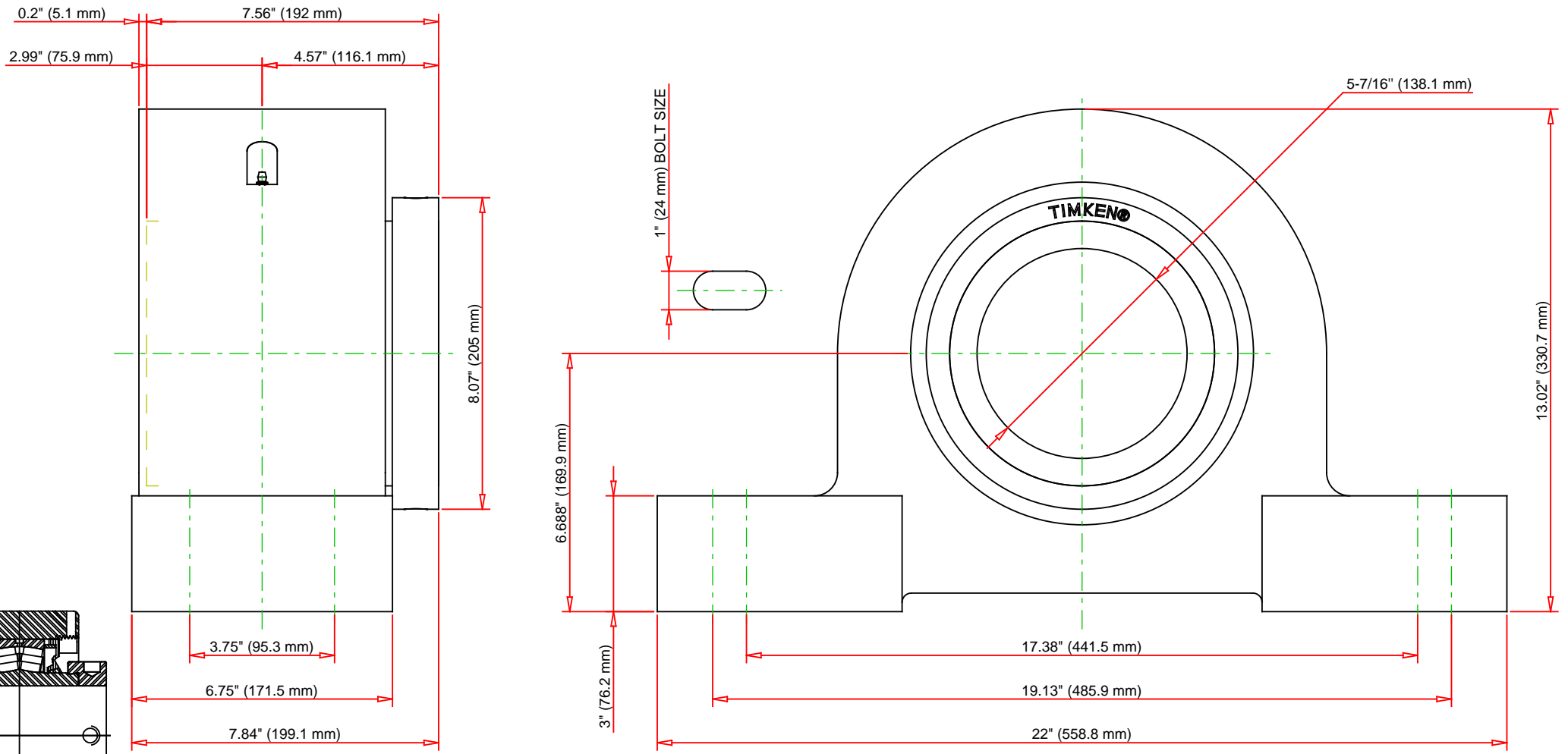
Engineering Internal Radial Clearance

Eng Internal Radial Clearance - Min	0.0043
--	--------

Eng Internal Radial Clearance - Max	0.0067
--	--------

Pre Install Clearance Min	0.0043 in
	0.110 mm

Pre Install Clearance Max	0.0067 in
	0.170 mm



Note: Section View not to Scale

C - Dynamic Load	286000	lbf	1270000	N
C0 - Static Load	372000	lbf	1660000	N
Weight	250	lb	113.4	kg
Max. Speed T-Seals & Grease	800	rpm		
Rad. Clearance - Max.	0.0067			



THE TIMKEN COMPANY
NORTH CANTON, OHIO USA

QMPH30J507S
Eccentric Four-Bolt Pillow Block

Every reasonable effort has been made to ensure the accuracy of the information contained in this writing, but no liability is accepted for errors, omissions or for any other reason.

FOR DISCUSSION ONLY