



The Timken Company

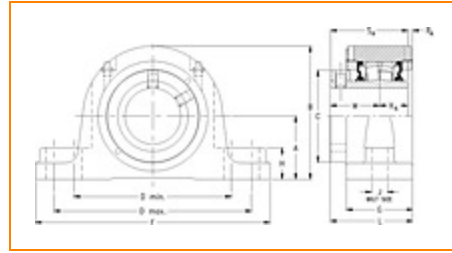
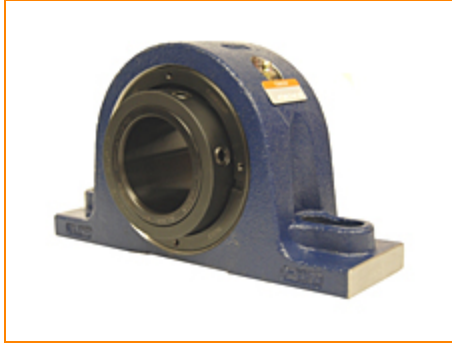
4500 Mt Pleasant St. NW

N. Canton, OH 44720

Phone: (234) 262-3000

E-Mail: CustomerCAD@timken.com • **Web site:** www.timken.com

Part Number QAPL10A115S, Single Concentric Two-Bolt Pillow Block



[Specifications](#) | [Dimensions](#) | [Radial and Thrust Factors](#) | [Engineering Seal Speed](#) | [Engineering Bearing Attributes](#) | [Engineering Internal Radial Clearance](#)

Specifications

Engineering Group Mounted Bearing

Bearing Number 22210

Shaft Size 1 15/16 in

Shaft Size Type Imperial

Full Timken Part Number

- QAPL10A115SB
- QAPL10A115SC
- QAPL10A115SEB
- QAPL10A115SEC
- QAPL10A115SEM
- QAPL10A115SEN
- QAPL10A115SEO
- QAPL10A115SET
- QAPL10A115SM
- QAPL10A115SMFG
- QAPL10A115SN



QAPL10A115SO
 QAPL10A115SOXYFB
 QAPL10A115ST
 QAPL10A115STHT
 QAPL10A115STNG

Locking Style Single Concentric

Housing Construction Two-Bolt Pillow Block

UPC Code

0883450047005
 0883450047012
 0883450047036
 0883450047043
 0883450047050
 0883450047067
 0883450047074
 0883450047081
 0883450188463
 0883450188623
 0883450265966
 0883450266123
 0883450433549
 0883450476577
 0883450499682
 0883450509916

Dimensions

Dimension A

2.25 in
 57.2 mm

Dimension B

4.81 in
 122.2 mm

Dimension C

2.88 in
 73.2 mm

Dimension D Min

5.93 in
 150.6 mm

Dimension D Max

6.36 in
 161.5 mm

Dimension F	8.38 in 212.9 mm
Dimension G	2.44 in 62 mm
Dimension H	1-1/4 in 31.8 mm
Dimension J (Bolt Size)	0.625 in 16 mm
Dimension KA	1 in 25.4 mm
Dimension L	3.11 in 79 mm
Dimension M	1.87 in 47.5 mm
Dimension RA	0.24 in 6.1 mm
Dimension SA	2.87 in 72.9 mm

Radial and Thrust Factors

C0 - Static Load	26600 lbf 118000 N
C - Dynamic Load (Basic)	26300 lbf 117000 N
e - Geometry Factor	0.24
Y1 - Geometry Factor	2.84
Y2 - Geometry Factor	4.23

Engineering Seal Speed

Oil Lubrication - M/N Seal	2400 rpm
-----------------------------------	----------

Oil Lubrication - T Seal	4200 rpm
---------------------------------	----------

Oil Lubrication - B/C/O Seal	1800 rpm
-------------------------------------	----------

Grease Lubrication - M/N Seal	2400 rpm
--------------------------------------	----------

Grease Lubrication - T Seal	3550 rpm
------------------------------------	----------

Grease Lubrication - B/C/O Seal	1800 rpm
--	----------

Engineering Bearing Attributes

Float	0.050 in 1.270 mm
--------------	----------------------

Shaft Tolerance	0.0015 in 0.038 mm
------------------------	-----------------------

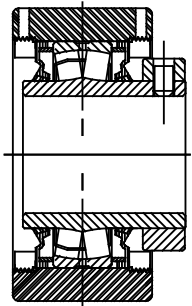
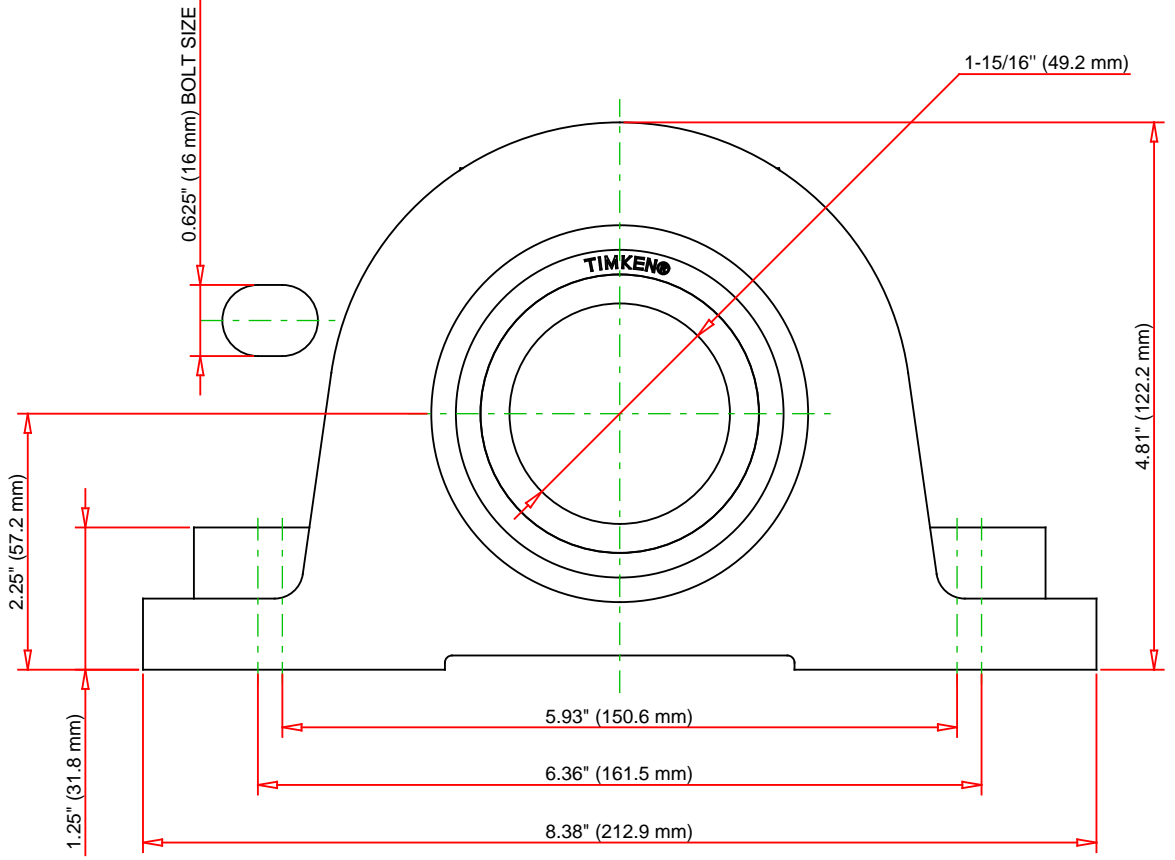
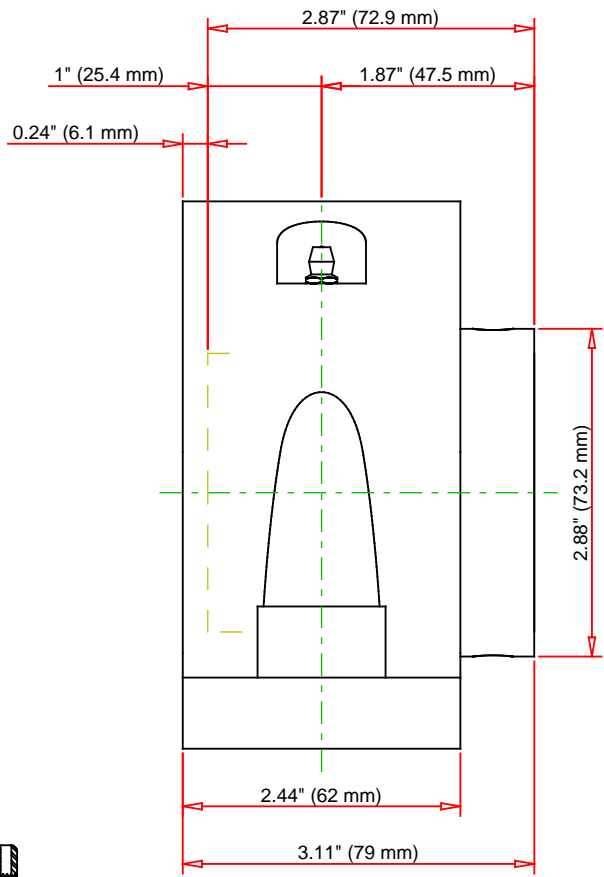
Engineering Internal Radial Clearance

Eng Internal Radial Clearance - Min	0.0016
--	--------

Eng Internal Radial Clearance - Max	0.0026
--	--------

Pre Install Clearance Min	0.0016 in 0.040 mm
----------------------------------	-----------------------

Pre Install Clearance Max	0.0026 in 0.065 mm
----------------------------------	-----------------------



Note: Section View not to Scale

C - Dynamic Load	26300	lbf	117000	N
C0 - Static Load	26600	lbf	118000	N
Weight	13	lb	5.9	kg
Max. Speed T-Seals & Grease	3550	rpm		
Rad. Clearance - Max.	0.0026			

TIMKEN

THE TIMKEN COMPANY
NORTH CANTON, OHIO USA

QAPL10A115S
Single Concentric Two-Bolt Pillow Block

Every reasonable effort has been made to ensure the accuracy of the information contained in this writing, but no liability is accepted for errors, omissions or for any other reason.

FOR DISCUSSION ONLY