



The Timken Company

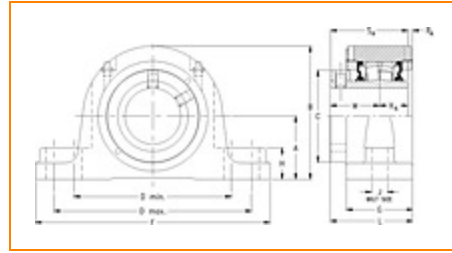
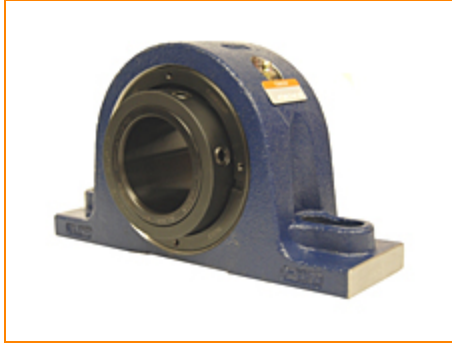
4500 Mt Pleasant St. NW

N. Canton, OH 44720

Phone: (234) 262-3000

E-Mail: CustomerCAD@timken.com • **Web site:** www.timken.com

Part Number QAPL11A203S, Single Concentric Two-Bolt Pillow Block



[Specifications](#) | [Dimensions](#) | [Radial and Thrust Factors](#) | [Engineering Seal Speed](#) | [Engineering Bearing Attributes](#) | [Engineering Internal Radial Clearance](#)

Specifications

Engineering Group Mounted Bearing

Bearing Number 22211

Shaft Size 2 3/16 in

Shaft Size Type Imperial

Full Timken Part Number

- QAPL11A203SB
- QAPL11A203SC
- QAPL11A203SEB
- QAPL11A203SEC
- QAPL11A203SEM
- QAPL11A203SEN
- QAPL11A203SEO
- QAPL11A203SET
- QAPL11A203SLRC4660
- QAPL11A203SM
- QAPL11A203SN



QAPL11A203SO
 QAPL11A203ST
 QAPL11A203STC4

Locking Style Single Concentric

Housing Construction Two-Bolt Pillow Block

UPC Code

0013992131454
 0883450047203
 0883450047210
 0883450047234
 0883450047241
 0883450047258
 0883450047265
 0883450047272
 0883450047289
 0883450188494
 0883450188654
 0883450265997
 0883450266154
 0883450500715

Dimensions

Dimension A

2-1/2 in
 63.5 mm

Dimension B

5-1/4 in
 133.4 mm

Dimension C

3.25 in
 82.6 mm

Dimension D Min

6.5 in
 165.1 mm

Dimension D Max

7.06 in
 179.3 mm

Dimension F

8.88 in
 225.6 mm

| | |
|--------------------------------|---------------------|
| Dimension G | 2.58 in 65.5 mm |
| Dimension H | 1-1/4 in 31.8 mm |
| Dimension J (Bolt Size) | 0.625 in 16 mm |
| Dimension KA | 1.13 in 28.7 mm |
| Dimension L | 3.29 in 83.6 mm |
| Dimension M | 2 in 50.8 mm |
| Dimension RA | 0.16 in 4.1 mm |
| Dimension SA | 3.13 in 79.5 mm |

Radial and Thrust Factors

| | |
|---------------------------------|-----------------------|
| C0 - Static Load | 31900 lbf 142000 N |
| C - Dynamic Load (Basic) | 31400 lbf 140000 N |
| e - Geometry Factor | 0.23 |
| Y1 - Geometry Factor | 2.95 |
| Y2 - Geometry Factor | 4.40 |

Engineering Seal Speed

| | |
|-----------------------------------|----------|
| Oil Lubrication - M/N Seal | 2200 rpm |
|-----------------------------------|----------|

| | |
|---------------------------------|----------|
| Oil Lubrication - T Seal | 3800 rpm |
|---------------------------------|----------|

| | |
|-------------------------------------|----------|
| Oil Lubrication - B/C/O Seal | 1600 rpm |
|-------------------------------------|----------|

| | |
|--------------------------------------|----------|
| Grease Lubrication - M/N Seal | 2200 rpm |
|--------------------------------------|----------|

| | |
|------------------------------------|----------|
| Grease Lubrication - T Seal | 3200 rpm |
|------------------------------------|----------|

| | |
|--|----------|
| Grease Lubrication - B/C/O Seal | 1600 rpm |
|--|----------|

Engineering Bearing Attributes

| | |
|--------------|----------------------|
| Float | 0.050 in 1.270 mm |
|--------------|----------------------|

| | |
|------------------------|-----------------------|
| Shaft Tolerance | 0.0015 in 0.038 mm |
|------------------------|-----------------------|

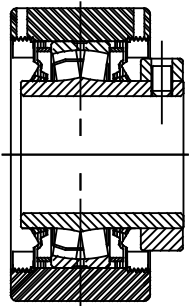
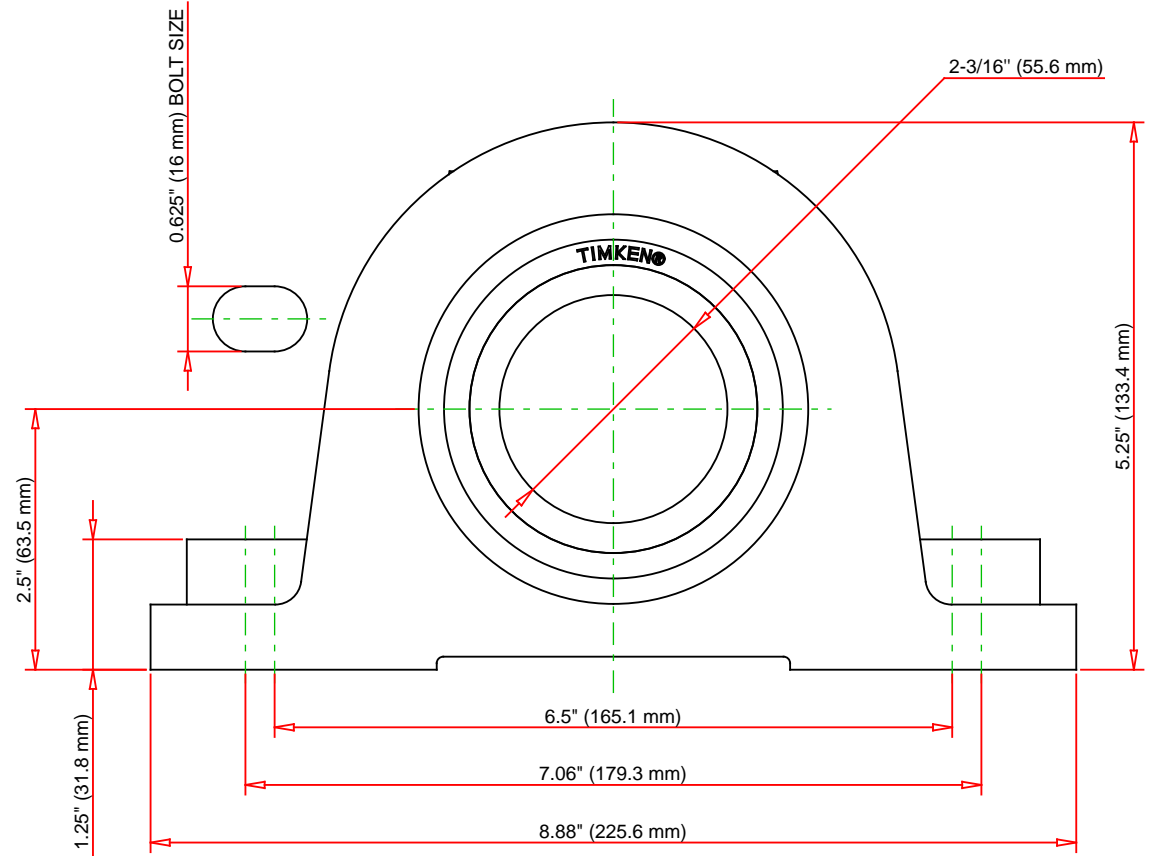
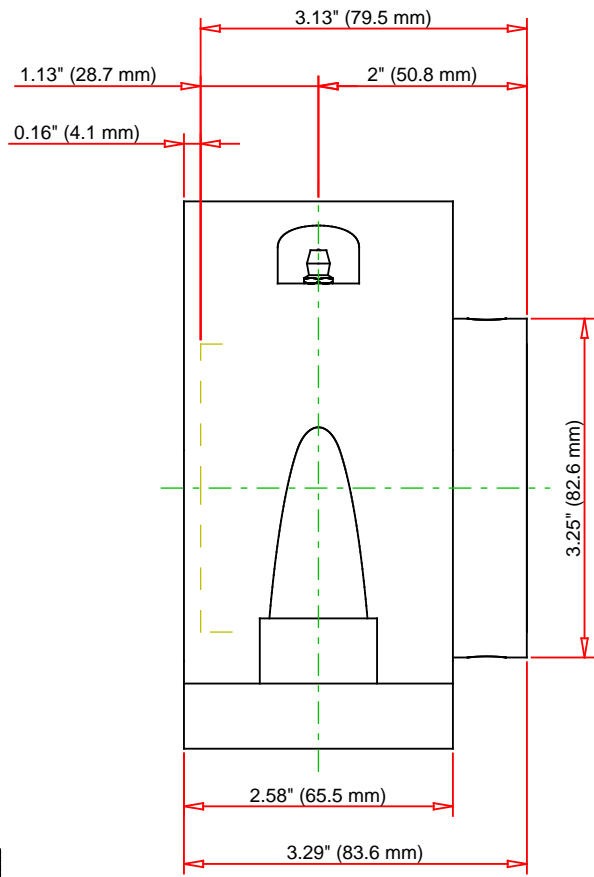
Engineering Internal Radial Clearance

| | |
|--|--------|
| Eng Internal Radial Clearance - Min | 0.0016 |
|--|--------|

| | |
|--|--------|
| Eng Internal Radial Clearance - Max | 0.0026 |
|--|--------|

| | |
|----------------------------------|-----------------------|
| Pre Install Clearance Min | 0.0016 in 0.040 mm |
|----------------------------------|-----------------------|

| | |
|----------------------------------|-----------------------|
| Pre Install Clearance Max | 0.0026 in 0.065 mm |
|----------------------------------|-----------------------|



Note: Section View not to Scale

| | | | | |
|-----------------------------|--------|-----|--------|----|
| C - Dynamic Load | 31400 | lbf | 140000 | N |
| C0 - Static Load | 31900 | lbf | 142000 | N |
| Weight | 17 | lb | 7.7 | kg |
| Max. Speed T-Seals & Grease | 3200 | rpm | | |
| Rad. Clearance - Max. | 0.0026 | | | |

TIMKEN

THE TIMKEN COMPANY
NORTH CANTON, OHIO USA

QAPL11A203S

Single Concentric Two-Bolt Pillow Block

Every reasonable effort has been made to ensure the accuracy of the information contained in this writing, but no liability is accepted for errors, omissions or for any other reason.

FOR DISCUSSION ONLY