



The Timken Company

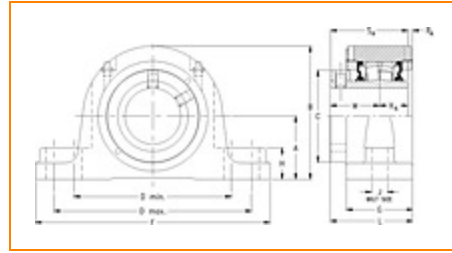
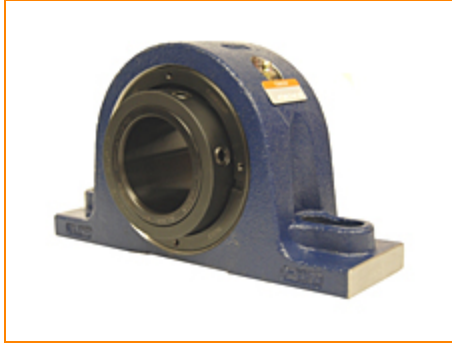
4500 Mt Pleasant St. NW

N. Canton, OH 44720

Phone: (234) 262-3000

E-Mail: CustomerCAD@timken.com • **Web site:** www.timken.com

Part Number QAPL15A215S, Single Concentric Two-Bolt Pillow Block



[Specifications](#) | [Dimensions](#) | [Radial and Thrust Factors](#) | [Engineering Seal Speed](#) | [Engineering Bearing Attributes](#) | [Engineering Internal Radial Clearance](#)

Specifications

Engineering Group Mounted Bearing

Bearing Number 22215

Shaft Size 2 15/16 in

Shaft Size Type Imperial

Full Timken Part Number

- QAPL15A215SB
- QAPL15A215SC
- QAPL15A215SEB
- QAPL15A215SEC
- QAPL15A215SEM
- QAPL15A215SEN
- QAPL15A215SEO
- QAPL15A215SET
- QAPL15A215SM
- QAPL15A215SN
- QAPL15A215SO



QAPL15A215ST

Locking Style

Single Concentric

Housing Construction

Two-Bolt Pillow Block

UPC Code

0883450047807
 0883450047814
 0883450047838
 0883450047845
 0883450047852
 0883450047869
 0883450047876
 0883450047883
 0883450188548
 0883450188708
 0883450266048
 0883450266208

Dimensions**Dimension A**

3.25 in
 82.6 mm

Dimension B

6.59 in
 167.4 mm

Dimension C

4.5 in
 114.3 mm

Dimension D Min

7.7 in
 195.6 mm

Dimension D Max

8.4 in
 213.4 mm

Dimension F

10.44 in
 265.2 mm

Dimension G

3 in
 76.2 mm

Dimension H

1.38 in
 35.1 mm

Dimension J (Bolt Size)	0.75 in 20 mm
Dimension KA	1.25 in 31.8 mm
Dimension L	3.87 in 98.3 mm
Dimension M	2.37 in 60.2 mm
Dimension RA	0.25 in 6.4 mm
Dimension SA	3.62 in 91.9 mm

Radial and Thrust Factors

C0 - Static Load	54100 lbf 240000 N
C - Dynamic Load (Basic)	49900 lbf 222000 N
e - Geometry Factor	0.22
Y1 - Geometry Factor	3.14
Y2 - Geometry Factor	4.67

Engineering Seal Speed

Oil Lubrication - M/N Seal	1600 rpm
Oil Lubrication - T Seal	2900 rpm
Oil Lubrication - B/C/O Seal	1300 rpm
Grease Lubrication - M/N Seal	1600 rpm

Grease Lubrication - T Seal	2400 rpm
------------------------------------	----------

Grease Lubrication - B/C/O Seal	1300 rpm
--	----------

Engineering Bearing Attributes

Float	0.083 in 2.108 mm
--------------	----------------------

Shaft Tolerance	0.0020 in 0.051 mm
------------------------	-----------------------

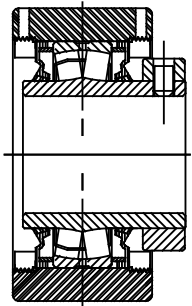
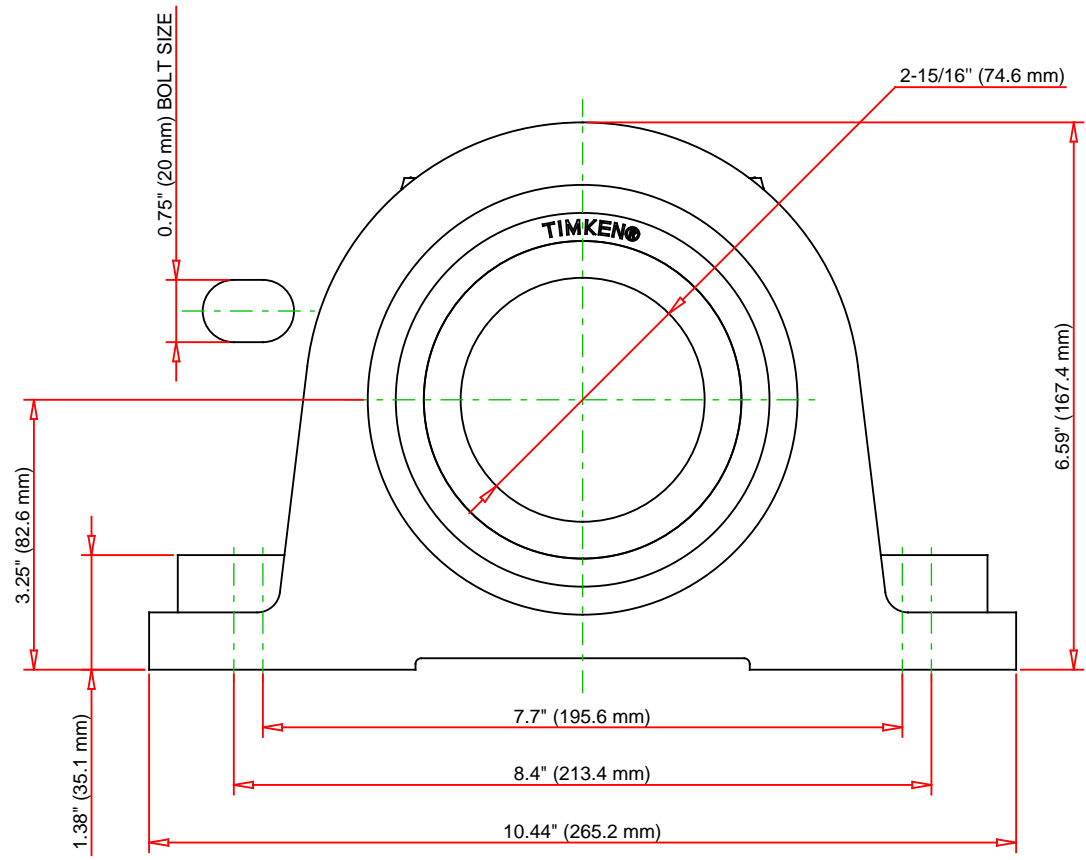
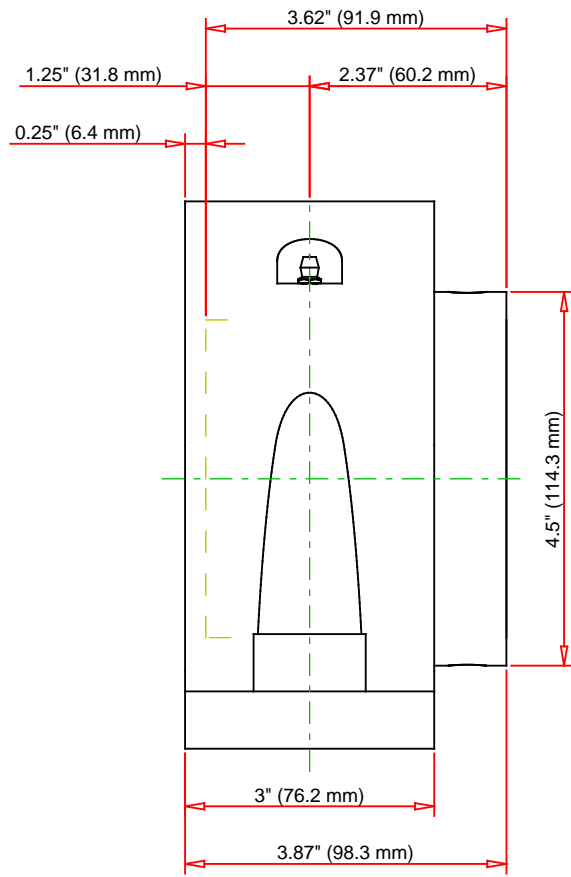
Engineering Internal Radial Clearance

Eng Internal Radial Clearance - Min	0.0020
--	--------

Eng Internal Radial Clearance - Max	0.0031
--	--------

Pre Install Clearance Min	0.0020 in 0.050 mm
----------------------------------	-----------------------

Pre Install Clearance Max	0.0031 in 0.080 mm
----------------------------------	-----------------------



Note: Section View not to Scale

C - Dynamic Load	49900	lbf	222000	N
C0 - Static Load	54100	lbf	240000	N
Weight	28	lb	12.7	kg
Max. Speed T-Seals & Grease	2400	rpm		
Rad. Clearance - Max.	0.0031			

TIMKEN

THE TIMKEN COMPANY
NORTH CANTON, OHIO USA

QAPL15A215S
Single Concentric Two-Bolt Pillow Block

Every reasonable effort has been made to ensure the accuracy of the information contained in this writing, but no liability is accepted for errors, omissions or for any other reason.

FOR DISCUSSION ONLY