



The Timken Company

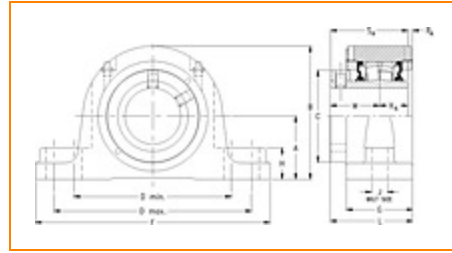
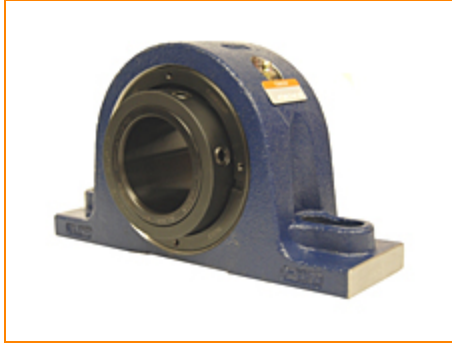
4500 Mt Pleasant St. NW

N. Canton, OH 44720

Phone: (234) 262-3000

E-Mail: CustomerCAD@timken.com • **Web site:** www.timken.com

Part Number QAPL18A308S, Single Concentric Two-Bolt Pillow Block



[Specifications](#) | [Dimensions](#) | [Radial and Thrust Factors](#) | [Engineering Seal Speed](#) | [Engineering Bearing Attributes](#) | [Engineering Internal Radial Clearance](#)

Specifications

Engineering Group Mounted Bearing

Bearing Number 22218

Shaft Size 3 1/2 in

Shaft Size Type Imperial

Full Timken Part Number

- QAPL18A308SB
- QAPL18A308SC
- QAPL18A308SEB
- QAPL18A308SEC
- QAPL18A308SEM
- QAPL18A308SEN
- QAPL18A308SEO
- QAPL18A308SET
- QAPL18A308SM
- QAPL18A308SN
- QAPL18A308SO



QAPL18A308ST

Locking Style

Single Concentric

Housing Construction

Two-Bolt Pillow Block

UPC Code

0883450048200
 0883450048217
 0883450048231
 0883450048248
 0883450048255
 0883450048262
 0883450048279
 0883450048286
 0883450188586
 0883450188746
 0883450266086
 0883450266246

Dimensions**Dimension A**

3-3/4 in
 95.3 mm

Dimension B

7.69 in
 195.3 mm

Dimension C

5.13 in
 130.3 mm

Dimension D Min

9.25 in
 235 mm

Dimension D Max

10.75 in
 273.1 mm

Dimension F

13 in
 330.2 mm

Dimension G

3.41 in
 86.6 mm

Dimension H

1.88 in
 47.8 mm

Dimension J (Bolt Size)	0.875 in 24 mm
Dimension KA	1.44 in 36.6 mm
Dimension L	4.3 in 109.2 mm
Dimension M	2.59 in 65.8 mm
Dimension RA	0.27 in 6.9 mm
Dimension SA	4.03 in 102.4 mm

Radial and Thrust Factors

C0 - Static Load	87200 lbf 388000 N
C - Dynamic Load (Basic)	79700 lbf 355000 N
e - Geometry Factor	0.23
Y1 - Geometry Factor	2.90
Y2 - Geometry Factor	4.31

Engineering Seal Speed

Oil Lubrication - M/N Seal	1400 rpm
Oil Lubrication - T Seal	2400 rpm
Oil Lubrication - B/C/O Seal	1000 rpm
Grease Lubrication - M/N Seal	1400 rpm

Grease Lubrication - T Seal	2000 rpm
------------------------------------	----------

Grease Lubrication - B/C/O Seal	1000 rpm
--	----------

Engineering Bearing Attributes

Float	0.083 in 2.108 mm
--------------	----------------------

Shaft Tolerance	0.0030 in 0.076 mm
------------------------	-----------------------

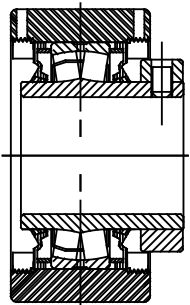
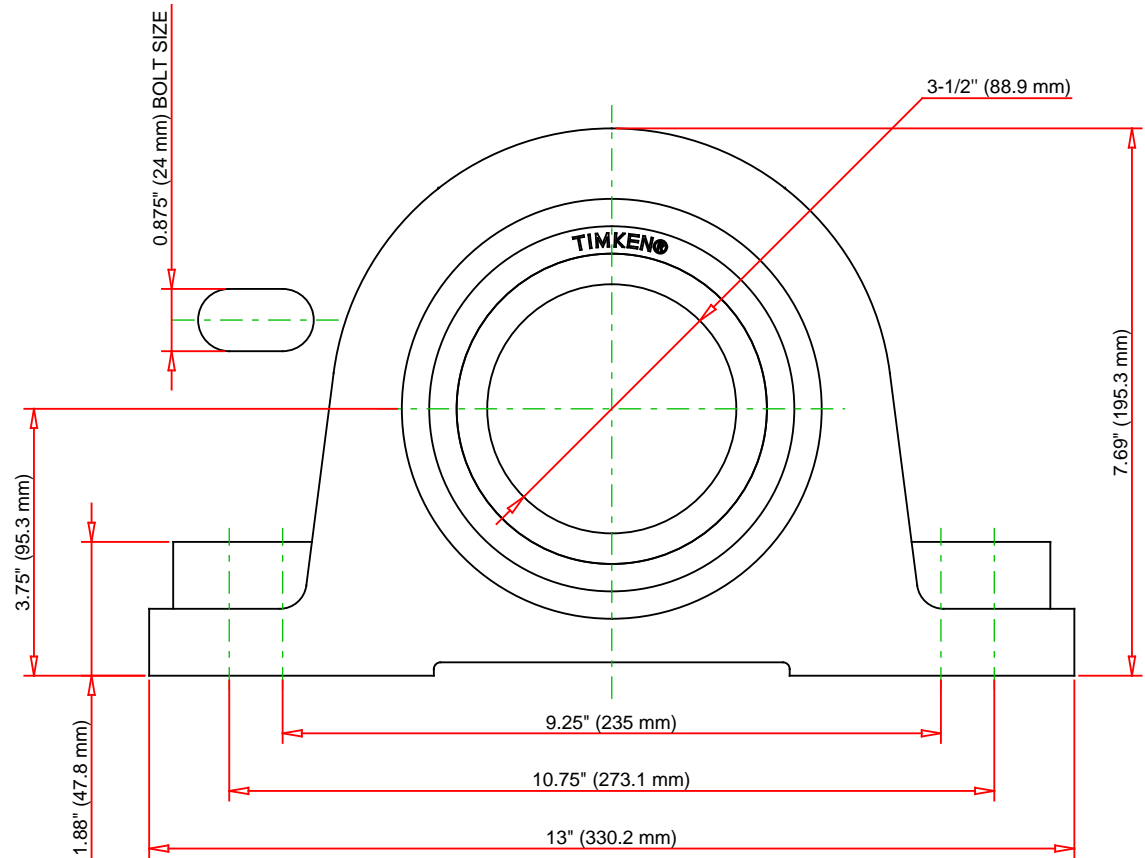
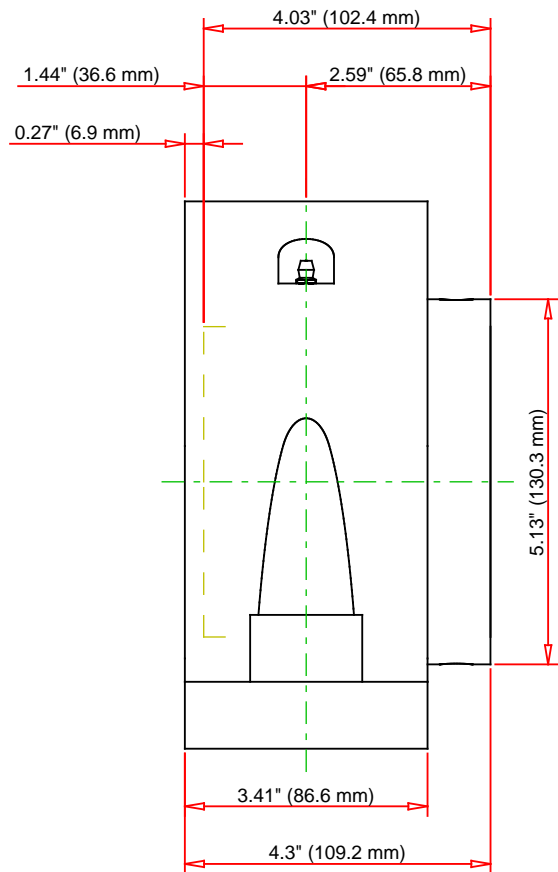
Engineering Internal Radial Clearance

Eng Internal Radial Clearance - Min	0.0024
--	--------

Eng Internal Radial Clearance - Max	0.0039
--	--------

Pre Install Clearance Min	0.0024 in 0.060 mm
----------------------------------	-----------------------

Pre Install Clearance Max	0.0039 in 0.100 mm
----------------------------------	-----------------------



Note: Section View not to Scale

C - Dynamic Load	79700	lbf	355000	N
C0 - Static Load	87200	lbf	388000	N
Weight	45	lb	20.4	kg
Max. Speed T-Seals & Grease	2000	rpm		
Rad. Clearance - Max.	0.0039			

TIMKEN

THE TIMKEN COMPANY
NORTH CANTON, OHIO USA

QAPL18A308S

Single Concentric Two-Bolt Pillow Block

Every reasonable effort has been made to ensure the accuracy of the information contained in this writing, but no liability is accepted for errors, omissions or for any other reason.

FOR DISCUSSION ONLY