



The Timken Company

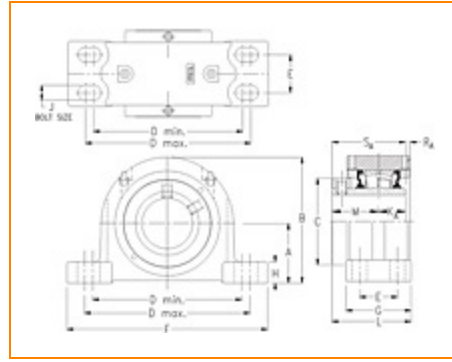
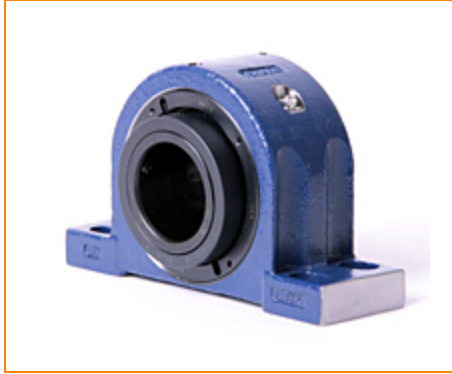
4500 Mt Pleasant St. NW

N. Canton, OH 44720

Phone: (234) 262-3000

E-Mail: CustomerCAD@timken.com • **Web site:** www.timken.com

Part Number QAPR13A207S, Single Concentric Four-Bolt Pillow Block



[Specifications](#) | [Dimensions](#) | [Radial and Thrust Factors](#) | [Engineering Seal Speed](#) | [Engineering Bearing Attributes](#) | [Engineering Internal Radial Clearance](#)

Specifications

Engineering Group Mounted Bearing

Bearing Number 22213

Shaft Size 2 7/16 in

Shaft Size Type Imperial

Full Timken Part Number

- QAPR13A207SB
- QAPR13A207SC
- QAPR13A207SEB
- QAPR13A207SEC
- QAPR13A207SEM
- QAPR13A207SEN
- QAPR13A207SEO
- QAPR13A207SET
- QAPR13A207SM
- QAPR13A207SN
- QAPR13A207SO
- QAPR13A207ST



Locking Style	Single Concentric
Housing Construction	Four-Bolt Pillow Block
UPC Code	0883450048606 0883450048613 0883450048637 0883450048644 0883450048651 0883450048668 0883450048675 0883450048682 0883450189743 0883450189859 0883450267106 0883450267212

Dimensions

Dimension A	2.75 in 69.9 mm
Dimension B	5.8 in 147.3 mm
Dimension C	3.81 in 96.8 mm
Dimension D Min	7.13 in 181.1 mm
Dimension D Max	8.75 in 222.3 mm
Dimension E	1.88 in 47.8 mm
Dimension F	10 1/4 in 260.4 mm
Dimension G	3.25 in 82.6 mm

Dimension H	0.98 in 24.9 mm
--------------------	--------------------

Dimension J (Bolt Size)	0.625 in 16 mm
--------------------------------	-------------------

Dimension KA	1.24 in 31.5 mm
---------------------	--------------------

Dimension L	3.77 in 95.8 mm
--------------------	--------------------

Dimension M	2.15 in 54.6 mm
--------------------	--------------------

Dimension RA	0.21 in 5.3 mm
---------------------	-------------------

Dimension SA	3.39 in 86.1 mm
---------------------	--------------------

Radial and Thrust Factors

C0 - Static Load	48600 lbf 216000 N
-------------------------	-----------------------

C - Dynamic Load (Basic)	46400 lbf 206000 N
---------------------------------	-----------------------

e - Geometry Factor	0.24
----------------------------	------

Y1 - Geometry Factor	2.79
-----------------------------	------

Y2 - Geometry Factor	4.15
-----------------------------	------

Engineering Seal Speed

Oil Lubrication - M/N Seal	1800 rpm
-----------------------------------	----------

Oil Lubrication - T Seal	3200 rpm
---------------------------------	----------

Oil Lubrication - B/C/O Seal	1500 rpm
-------------------------------------	----------

Grease Lubrication - M/N Seal	1800 rpm
--------------------------------------	----------

Grease Lubrication - T Seal	2800 rpm
------------------------------------	----------

Grease Lubrication - B/C/O Seal	1500 rpm
--	----------

Engineering Bearing Attributes

Float	0.083 in
	2.108 mm

Shaft Tolerance	0.0015 in
	0.038 mm

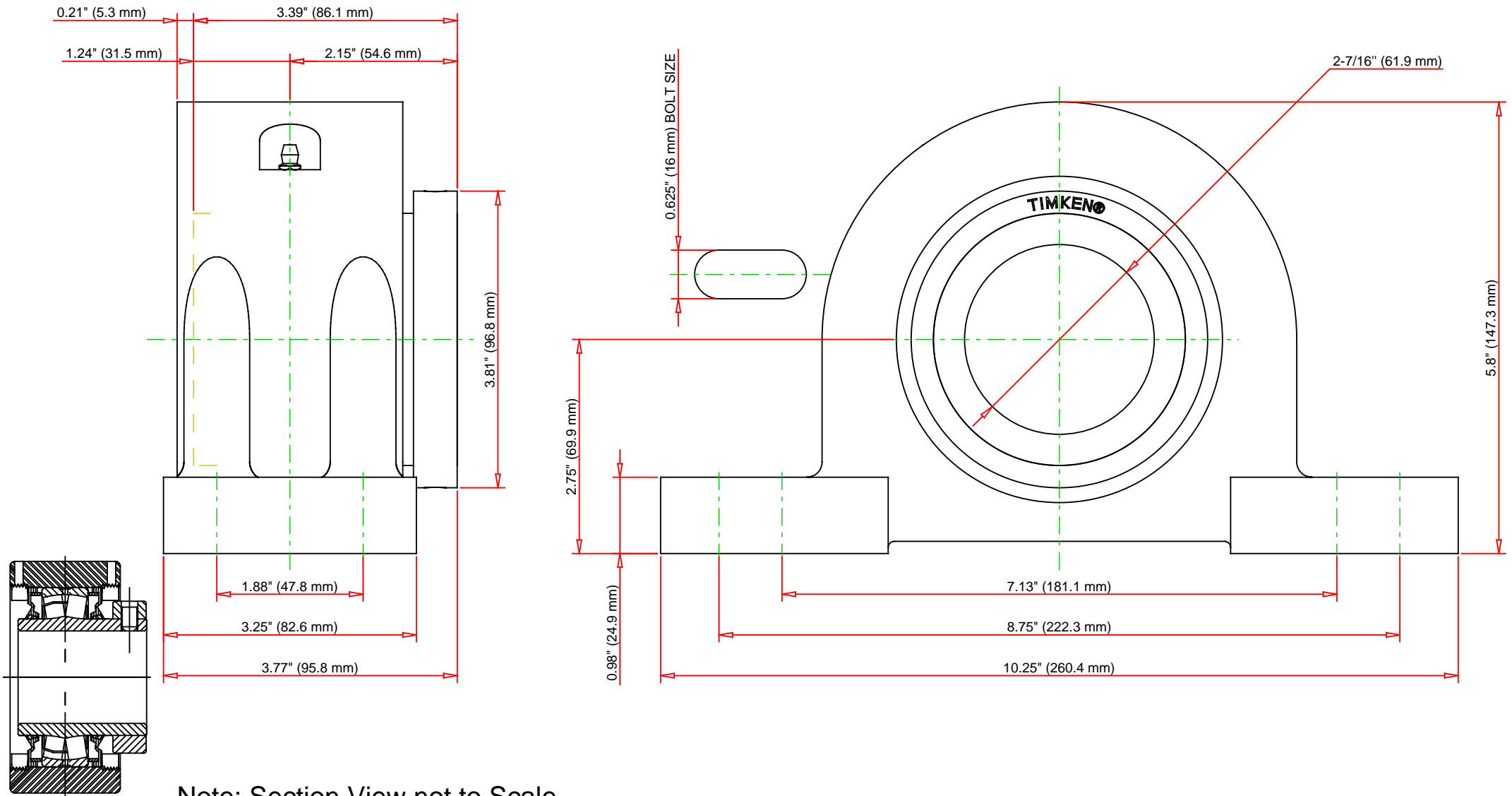
Engineering Internal Radial Clearance

Eng Internal Radial Clearance - Min	0.0016
--	--------

Eng Internal Radial Clearance - Max	0.0026
--	--------

Pre Install Clearance Min	0.0016 in
	0.040 mm

Pre Install Clearance Max	0.0026 in
	0.065 mm



C - Dynamic Load	46400	lbf	206000	N
C0 - Static Load	48600	lbf	216000	N
Weight	20	lb	9.1	kg
Max. Speed T-Seals & Grease	2800	rpm		
Rad. Clearance - Max.	0.0026			

TIMKEN

THE TIMKEN COMPANY
NORTH CANTON, OHIO USA

QAPR13A207S
Single Concentric Four-Bolt Pillow
Block

Every reasonable effort has been made to ensure the accuracy of the information contained in this writing, but no liability is accepted for errors, omissions or for any other reason.

FOR DISCUSSION ONLY