



The Timken Company

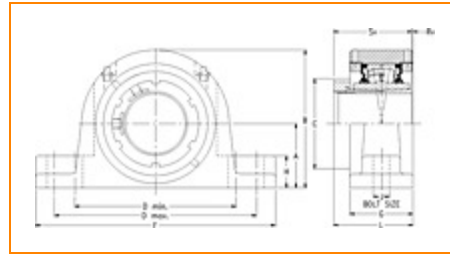
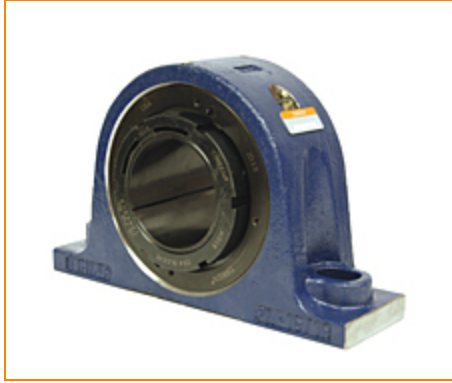
4500 Mt Pleasant St. NW

N. Canton, OH 44720

Phone: (234) 262-3000

E-Mail: CustomerCAD@timken.com • **Web site:** www.timken.com

Part Number QVPA22V315S, Single V-Lock Two-Bolt Pillow Block



[Specifications](#) | [Dimensions](#) | [Radial and Thrust Factors](#) | [Engineering Seal Speed](#) | [Engineering Bearing Attributes](#) | [Engineering Internal Radial Clearance](#)

Specifications

Engineering Group Mounted Bearing

Bearing Number 22222

Shaft Size 3 15/16 in

Shaft Size Type Imperial

Full Timken Part Number

- QVPA22V315SB
- QVPA22V315SC
- QVPA22V315SEB
- QVPA22V315SEC
- QVPA22V315SEM
- QVPA22V315SEN
- QVPA22V315SEO
- QVPA22V315SET
- QVPA22V315SM
- QVPA22V315SN
- QVPA22V315SO
- QVPA22V315ST



| | |
|-----------------------------|--|
| Locking Style | Single V-Lock |
| Housing Construction | Two-Bolt Pillow Block |
| UPC Code | 0883450048798 0883450048828 0883450206129 0883450206273 0883450218559 0883450218702 0883450230971 0883450231121 0883450239714 0883450239868 0883450244671 0883450244824 |

Dimensions

| | |
|------------------------|---------------------|
| Dimension A | 4.94 in 125.5 mm |
| Dimension B | 9.47 in 240.5 mm |
| Dimension C | 5.5 in 139.7 mm |
| Dimension D Min | 12.5 in 317.5 mm |
| Dimension D Max | 14.5 in 368.3 mm |
| Dimension F | 16 in 406.4 mm |
| Dimension G | 3.96 in 100.6 mm |
| Dimension H | 2 in 50.8 mm |

| | |
|--------------------------------|---------------------|
| Dimension J (Bolt Size) | 0.875 in 24 mm |
| Dimension L | 4.55 in 115.6 mm |
| Dimension RV | 0.37 in 9.4 mm |
| Dimension SV | 4.13 in 104.9 mm |

Radial and Thrust Factors

| | |
|---------------------------------|------------------------|
| C0 - Static Load | 147000 lbf 653000 N |
| C - Dynamic Load (Basic) | 125000 lbf 555000 N |
| e - Geometry Factor | 0.25 |
| Y1 - Geometry Factor | 2.73 |
| Y2 - Geometry Factor | 4.06 |

Engineering Seal Speed

| | |
|--|----------|
| Oil Lubrication - M/N Seal | 900 rpm |
| Oil Lubrication - T Seal | 1700 rpm |
| Oil Lubrication - B/C/O Seal | 600 rpm |
| Grease Lubrication - M/N Seal | 900 rpm |
| Grease Lubrication - T Seal | 1200 rpm |
| Grease Lubrication - B/C/O Seal | 600 rpm |

Engineering Bearing Attributes

| | |
|--------------|----------------------|
| Float | 0.083 in 2.108 mm |
|--------------|----------------------|

| | |
|------------------------|-----------------------|
| Shaft Tolerance | 0.0030 in 0.076 mm |
|------------------------|-----------------------|

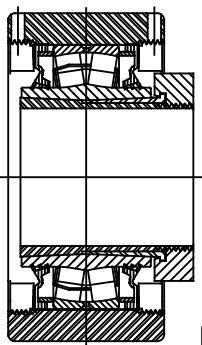
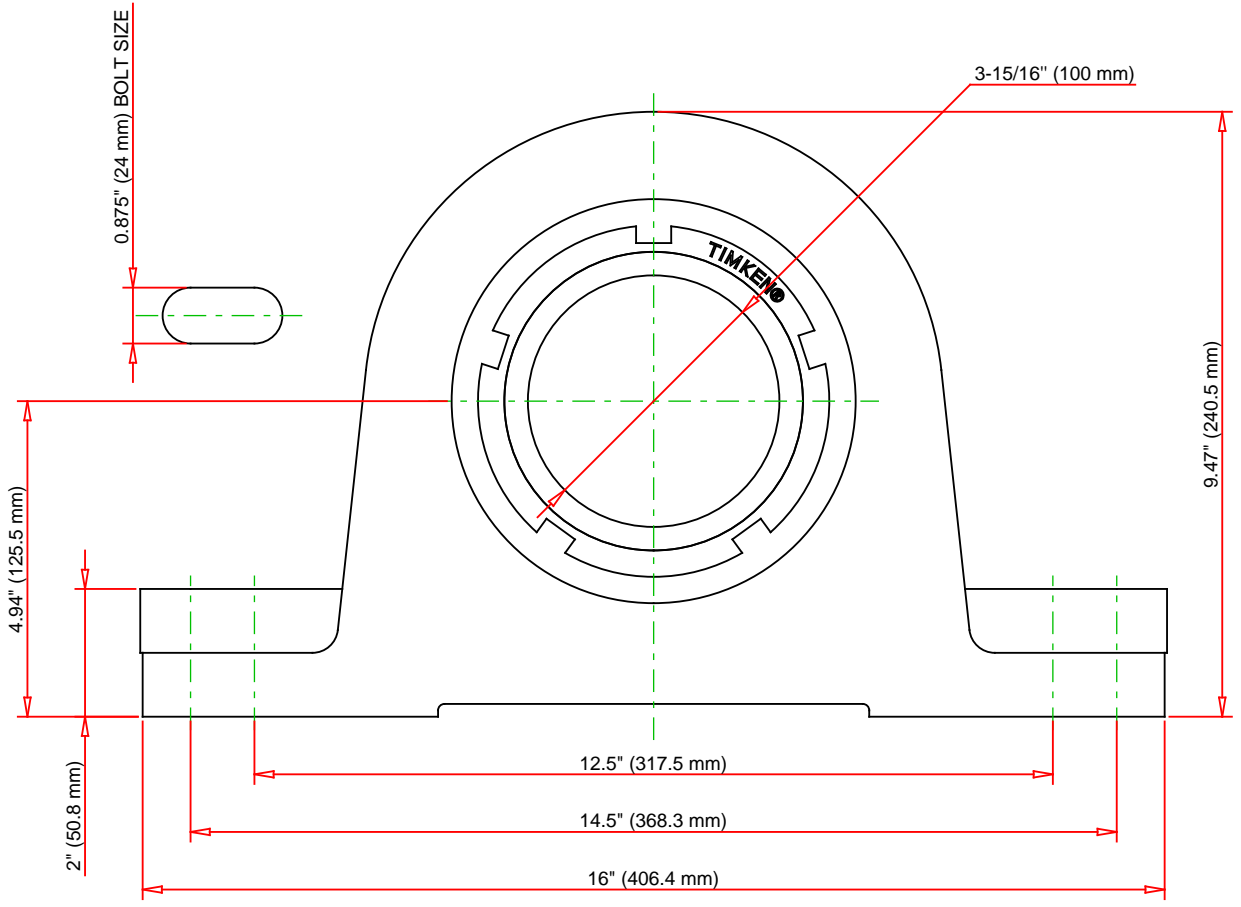
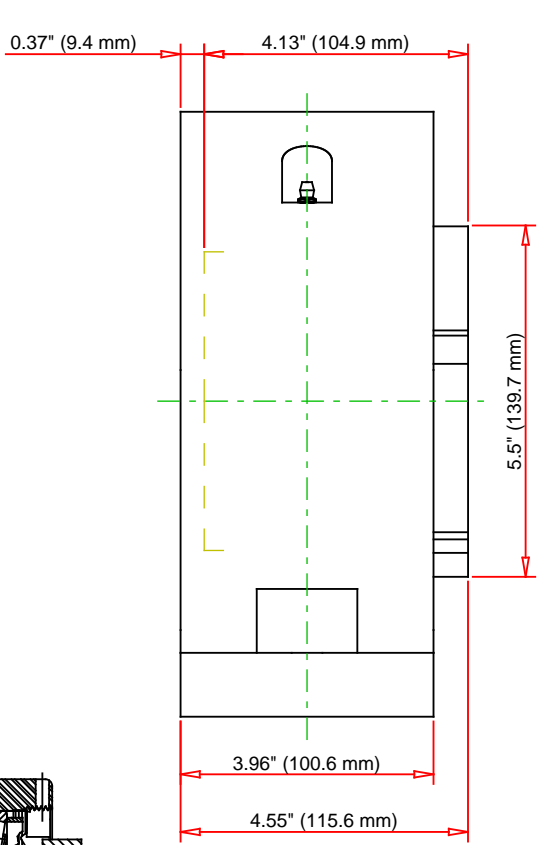
Engineering Internal Radial Clearance

| | |
|--|--------|
| Eng Internal Radial Clearance - Min | 0.0053 |
|--|--------|

| | |
|--|--------|
| Eng Internal Radial Clearance - Max | 0.0067 |
|--|--------|

| | |
|----------------------------------|-----------------------|
| Pre Install Clearance Min | 0.0053 in 0.135 mm |
|----------------------------------|-----------------------|

| | |
|----------------------------------|-----------------------|
| Pre Install Clearance Max | 0.0067 in 0.170 mm |
|----------------------------------|-----------------------|



Note: Section View not to Scale

| | | | | |
|-----------------------------|--------|-----|--------|----|
| C - Dynamic Load | 125000 | lbf | 555000 | N |
| C0 - Static Load | 147000 | lbf | 653000 | N |
| Weight | 84 | lb | 38.1 | kg |
| Max. Speed T-Seals & Grease | 1200 | rpm | | |
| Rad. Clearance - Max. | 0.0067 | | | |

TIMKEN

THE TIMKEN COMPANY
NORTH CANTON, OHIO USA

QVPA22V315S
Single V-Lock Two-Bolt Pillow Block

Every reasonable effort has been made to ensure the accuracy of the information contained in this writing, but no liability is accepted for errors, omissions or for any other reason.

FOR DISCUSSION ONLY