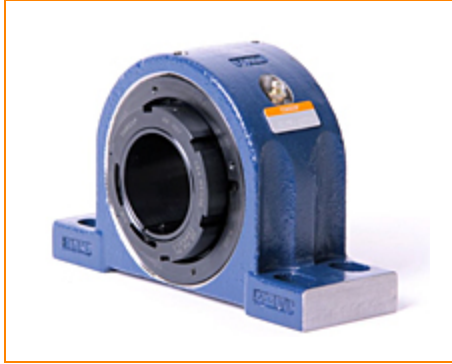



The Timken Company

4500 Mt Pleasant St. NW

N. Canton, OH 44720

Phone: (234) 262-3000

E-Mail: CustomerCAD@timken.com • **Web site:** www.timken.com
Part Number QVPF16V300S, Single V-Lock Four-Bolt Pillow Block


[Specifications](#) | [Dimensions](#) | [Radial and Thrust Factors](#) | [Engineering Seal Speed](#) | [Engineering Bearing Attributes](#) | [Engineering Internal Radial Clearance](#)

Specifications

Engineering Group Mounted Bearing

Bearing Number 22216

Shaft Size 3 in

Shaft Size Type Imperial

Full Timken Part Number

- QVPF16V300SB
- QVPF16V300SC
- QVPF16V300SEB
- QVPF16V300SEC
- QVPF16V300SEM
- QVPF16V300SEN
- QVPF16V300SEO
- QVPF16V300SET
- QVPF16V300SM
- QVPF16V300SN
- QVPF16V300SO
- QVPF16V300ST



Locking Style	Single V-Lock
Housing Construction	Four-Bolt Pillow Block
UPC Code	883450049573 883450049580 883450112154 883450112192 883450173643 883450203654 883450204033 883450216074 883450216456 883450228497 883450228879 883450296687

Dimensions

Dimension A	3.25 in 82.6 mm
Dimension B	6.59 in 167.4 mm
Dimension C	4.19 in 106.4 mm
Dimension D Min	7.6 in 193 mm
Dimension D Max	9.1 in 231.1 mm
Dimension E	1.88 in 47.8 mm
Dimension F	10.44 in 265.2 mm
Dimension G	3.13 in 79.5 mm

Dimension H	1.29 in 32.8 mm
--------------------	--------------------

Dimension J (Bolt Size)	0.625 in 16 mm
--------------------------------	-------------------

Dimension L	3.66 in 93 mm
--------------------	------------------

Dimension RV	0.35 in 8.9 mm
---------------------	-------------------

Dimension SV	3.23 in 89 mm
---------------------	------------------

Radial and Thrust Factors

C0 - Static Load	62500 lbf 278000 N
-------------------------	-----------------------

C - Dynamic Load (Basic)	57200 lbf 254000 N
---------------------------------	-----------------------

e - Geometry Factor	0.22
----------------------------	------

Y1 - Geometry Factor	3.14
-----------------------------	------

Y2 - Geometry Factor	4.67
-----------------------------	------

Engineering Seal Speed

Oil Lubrication - M/N Seal	1500 rpm
-----------------------------------	----------

Oil Lubrication - T Seal	2650 rpm
---------------------------------	----------

Oil Lubrication - B/C/O Seal	1200 rpm
-------------------------------------	----------

Grease Lubrication - M/N Seal	1500 rpm
--------------------------------------	----------

Grease Lubrication - T Seal	2200 rpm
------------------------------------	----------

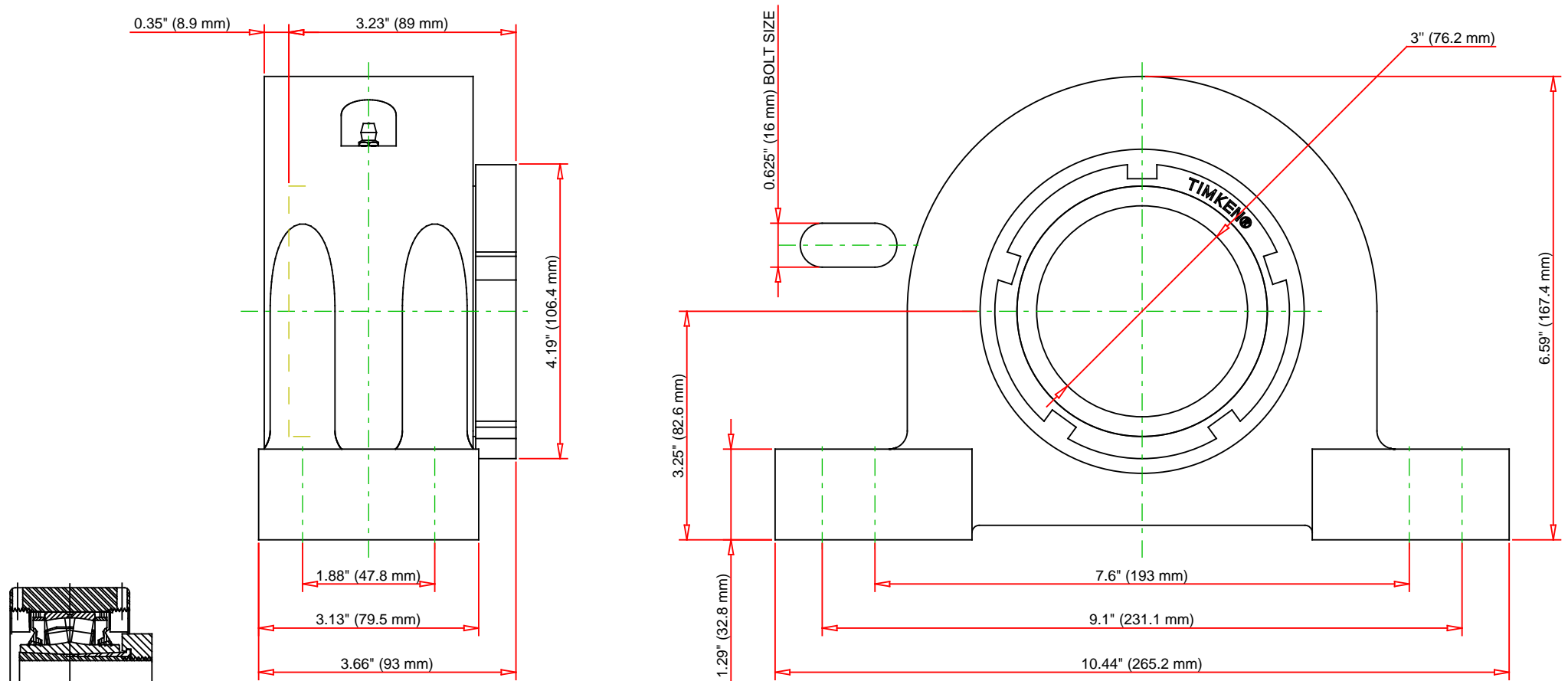
Grease Lubrication - B/C/O Seal	1150 rpm
--	----------

Engineering Bearing Attributes

Float	0.083 in 2.108 mm
Shaft Tolerance	0.0020 in 0.051 mm

Engineering Internal Radial Clearance

Eng Internal Radial Clearance - Min	0.0037
Eng Internal Radial Clearance - Max	0.0047
Pre Install Clearance Min	0.0037 in 0.095 mm
Pre Install Clearance Max	0.0047 in 0.120 mm



Note: Section View not to Scale

C - Dynamic Load	57200	lbf	254000	N
C0 - Static Load	62500	lbf	278000	N
Weight	27	lb	12.2	kg
Max. Speed T-Seals & Grease	2200	rpm		
Rad. Clearance - Max.	0.0047			

TIMKEN

THE TIMKEN COMPANY
NORTH CANTON, OHIO USA

QVPF16V300S
Single V-Lock Four-Bolt Pillow Block

Every reasonable effort has been made to ensure the accuracy of the information contained in this writing, but no liability is accepted for errors, omissions or for any other reason.

FOR DISCUSSION ONLY