



**The Timken Company**

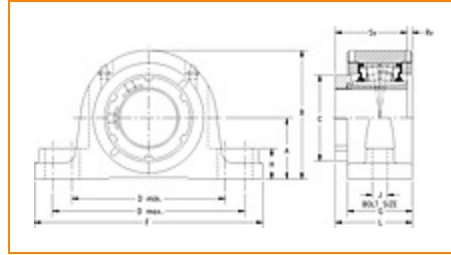
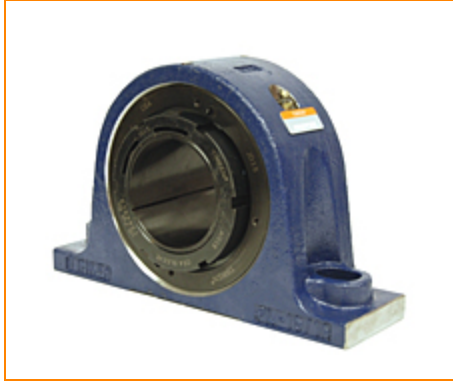
4500 Mt Pleasant St. NW

N. Canton, OH 44720

**Phone:** (234) 262-3000

**E-Mail:** [CustomerCAD@timken.com](mailto:CustomerCAD@timken.com) • **Web site:** [www.timken.com](http://www.timken.com)

Part Number QVP16V300S, Single V-Lock Two-Bolt Pillow Block



[Specifications](#) | [Dimensions](#) | [Radial and Thrust Factors](#) | [Engineering Seal Speed](#) | [Engineering Bearing Attributes](#) | [Engineering Internal Radial Clearance](#)

**Specifications**

<b>Engineering Group</b>	Mounted Bearing
<b>Bearing Number</b>	22216
<b>Shaft Size</b>	3 in
<b>Shaft Size Type</b>	Imperial
<b>Full Timken Part Number</b>	QVP16V300SB QVP16V300SC QVP16V300SEB QVP16V300SEC QVP16V300SEM QVP16V300SEN QVP16V300SEO QVP16V300SET QVP16V300SM QVP16V300SN QVP16V300SO QVP16V300ST QVP16V300STNG



<b>Locking Style</b>	Single V-Lock
<b>Housing Construction</b>	Two-Bolt Pillow Block
<b>UPC Code</b>	0883450111010 0883450111034 0883450111041 0883450111058 0883450170611 0883450171366 0883450202138 0883450202510 0883450214551 0883450214933 0883450226974 0883450227353 0883450492348

## Dimensions

<b>Dimension A</b>	3.13 in 79.5 mm
<b>Dimension B</b>	6.47 in 164.3 mm
<b>Dimension C</b>	4.19 in 106.4 mm
<b>Dimension D Min</b>	7.8 in 198.1 mm
<b>Dimension D Max</b>	9.63 in 244.6 mm
<b>Dimension F</b>	11.63 in 295.4 mm
<b>Dimension G</b>	3 in 76.2 mm
<b>Dimension H</b>	1.38 in 35.1 mm

<b>Dimension J (Bolt Size)</b>	0.75 in 20 mm
<b>Dimension L</b>	3.59 in 91.2 mm
<b>Dimension RV</b>	0.22 in 5.6 mm
<b>Dimension SV</b>	3.29 in 83.6 mm

### Radial and Thrust Factors

<b>C0 - Static Load</b>	62500 lbf 278000 N
<b>C - Dynamic Load (Basic)</b>	57200 lbf 254000 N
<b>e - Geometry Factor</b>	0.22
<b>Y1 - Geometry Factor</b>	3.14
<b>Y2 - Geometry Factor</b>	4.67

### Engineering Seal Speed

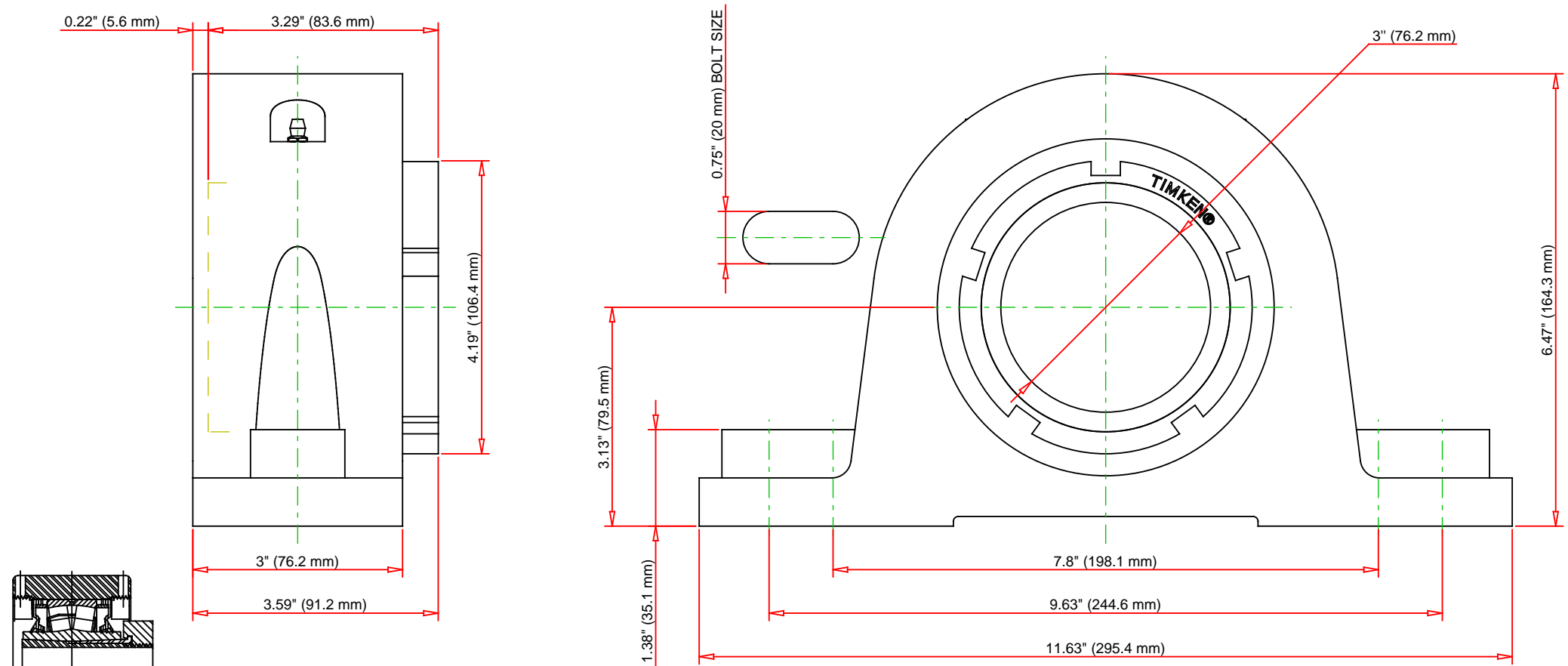
<b>Oil Lubrication - M/N Seal</b>	1500 rpm
<b>Oil Lubrication - T Seal</b>	2650 rpm
<b>Oil Lubrication - B/C/O Seal</b>	1200 rpm
<b>Grease Lubrication - M/N Seal</b>	1500 rpm
<b>Grease Lubrication - T Seal</b>	2200 rpm
<b>Grease Lubrication - B/C/O Seal</b>	1150 rpm

### Engineering Bearing Attributes

<b>Float</b>	0.083 in 2.108 mm
<b>Shaft Tolerance</b>	0.0020 in 0.051 mm

## Engineering Internal Radial Clearance

<b>Eng Internal Radial Clearance - Min</b>	0.0037
<b>Eng Internal Radial Clearance - Max</b>	0.0047
<b>Pre Install Clearance Min</b>	0.0037 in 0.095 mm
<b>Pre Install Clearance Max</b>	0.0047 in 0.120 mm



Note: Section View not to Scale

C - Dynamic Load	57200	lbf	254000	N
C0 - Static Load	62500	lbf	278000	N
Weight	28	lb	12.7	kg
Max. Speed T-Seals & Grease	2200	rpm		
Rad. Clearance - Max.	0.0047			

**TIMKEN**

THE TIMKEN COMPANY  
NORTH CANTON, OHIO USA

**QVP16V300S**  
Single V-Lock Two-Bolt Pillow Block

Every reasonable effort has been made to ensure the accuracy of the information contained in this writing, but no liability is accepted for errors, omissions or for any other reason.

**FOR DISCUSSION ONLY**