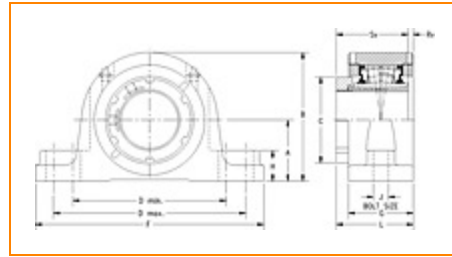
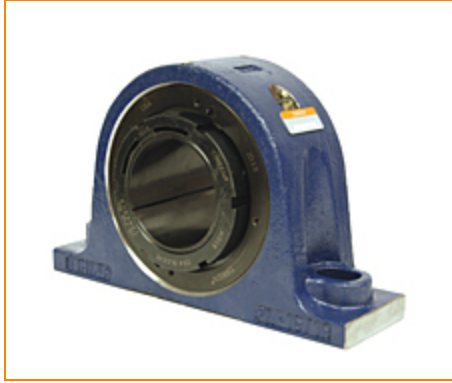



The Timken Company

4500 Mt Pleasant St. NW

N. Canton, OH 44720

Phone: (234) 262-3000

E-Mail: CustomerCAD@timken.com • **Web site:** www.timken.com
Part Number QVP12V203S, Single V-Lock Two-Bolt Pillow Block


[Specifications](#) | [Dimensions](#) | [Radial and Thrust Factors](#) | [Engineering Seal Speed](#) | [Engineering Bearing Attributes](#) | [Engineering Internal Radial Clearance](#)

Specifications

Engineering Group Mounted Bearing

Bearing Number 22212

Shaft Size 2 3/16 in

Shaft Size Type Imperial

Full Timken Part Number

- QVP12V203SB
- QVP12V203SC
- QVP12V203SEB
- QVP12V203SEC
- QVP12V203SEM
- QVP12V203SEN
- QVP12V203SEO
- QVP12V203SET
- QVP12V203SM
- QVP12V203SN
- QVP12V203SO
- QVP12V203ST



Locking Style	Single V-Lock
Housing Construction	Two-Bolt Pillow Block
UPC Code	0883450014175 0883450032353 0883450094214 0883450094641 0883450106603 0883450106740 0883450113045 0883450113304 0883450125697 0883450126168 0883450137447 0883450137539

Dimensions

Dimension A	2-1/2 in 63.5 mm
Dimension B	5-1/4 in 133.4 mm
Dimension C	3.16 in 80.3 mm
Dimension D Min	6.5 in 165.1 mm
Dimension D Max	7.88 in 200.2 mm
Dimension F	9.63 in 244.6 mm
Dimension G	2.63 in 66.8 mm
Dimension H	1-1/4 in 31.8 mm

Dimension J (Bolt Size)	0.625 in 16 mm
--------------------------------	-------------------

Dimension L	3.33 in 84.6 mm
--------------------	--------------------

Dimension RV	0.05 in 1.3 mm
---------------------	-------------------

Dimension SV	3.14 in 79.8 mm
---------------------	--------------------

Radial and Thrust Factors

C0 - Static Load	39000 lbf 174000 N
-------------------------	-----------------------

C - Dynamic Load (Basic)	38100 lbf 169000 N
---------------------------------	-----------------------

e - Geometry Factor	0.24
----------------------------	------

Y1 - Geometry Factor	2.84
-----------------------------	------

Y2 - Geometry Factor	4.23
-----------------------------	------

Engineering Seal Speed

Oil Lubrication - M/N Seal	2000 rpm
-----------------------------------	----------

Oil Lubrication - T Seal	3500 rpm
---------------------------------	----------

Oil Lubrication - B/C/O Seal	1650 rpm
-------------------------------------	----------

Grease Lubrication - M/N Seal	2000 rpm
--------------------------------------	----------

Grease Lubrication - T Seal	3000 rpm
------------------------------------	----------

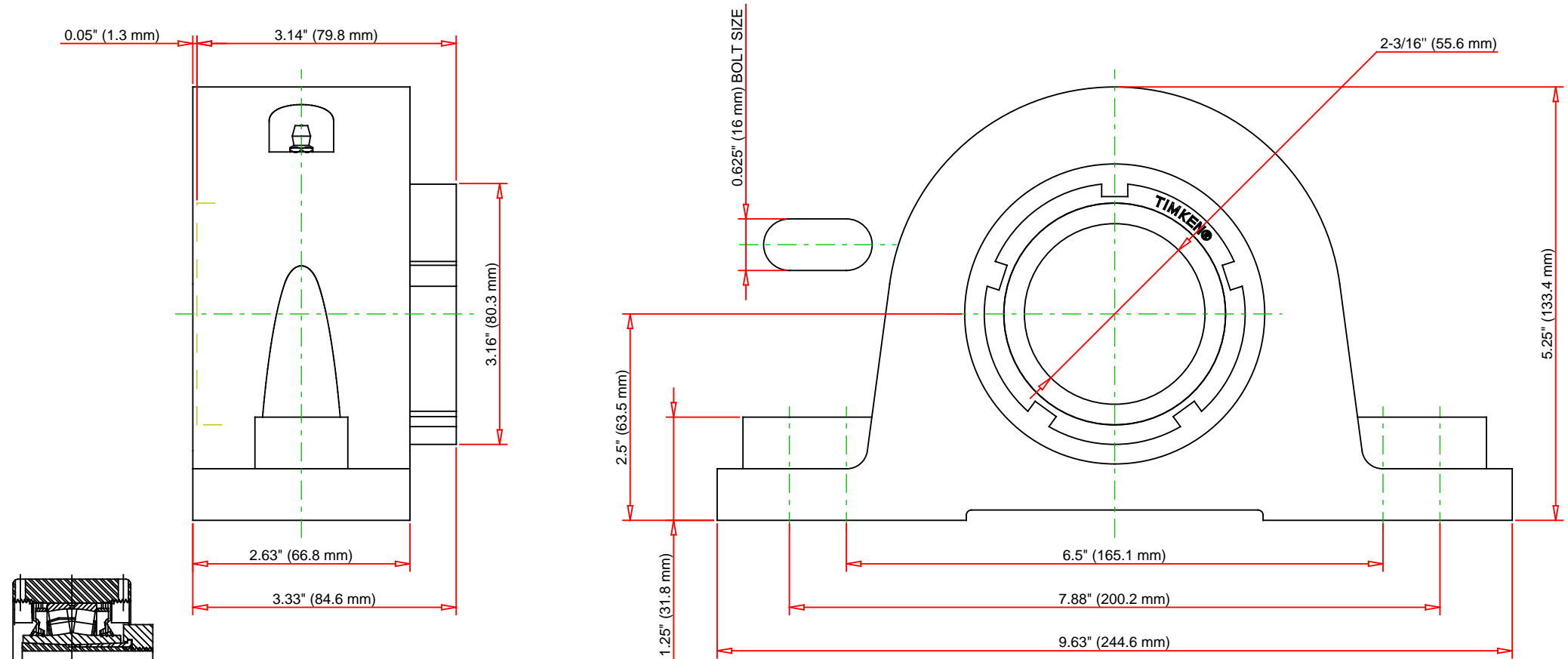
Grease Lubrication - B/C/O Seal	1550 rpm
--	----------

Engineering Bearing Attributes

Float	0.050 in 1.270 mm
Shaft Tolerance	0.0015 in 0.038 mm

Engineering Internal Radial Clearance

Eng Internal Radial Clearance - Min	0.0030
Eng Internal Radial Clearance - Max	0.0037
Pre Install Clearance Min	0.0030 in 0.075 mm
Pre Install Clearance Max	0.0037 in 0.094 mm



Note: Section View not to Scale

C - Dynamic Load	38100	lbf	169000	N
C0 - Static Load	39000	lbf	174000	N
Weight	17	lb	7.7	kg
Max. Speed T-Seals & Grease	3000	rpm		
Rad. Clearance - Max.	0.0037			

TIMKEN

THE TIMKEN COMPANY
NORTH CANTON, OHIO USA

QVP12V203S
Single V-Lock Two-Bolt Pillow Block

Every reasonable effort has been made to ensure the accuracy of the information contained in this writing, but no liability is accepted for errors, omissions or for any other reason.

FOR DISCUSSION ONLY