



The Timken Company

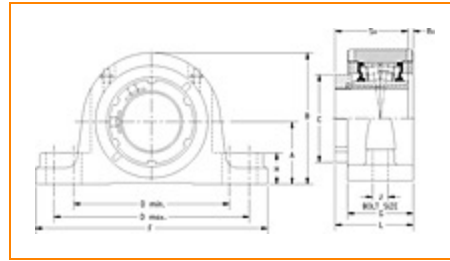
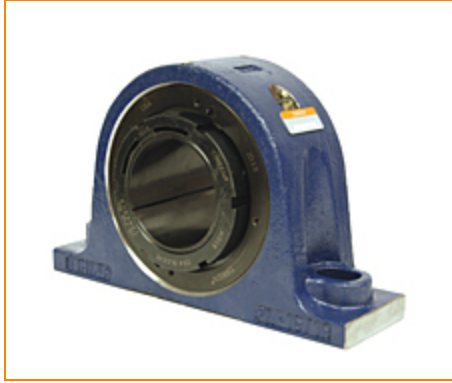
4500 Mt Pleasant St. NW

N. Canton, OH 44720

Phone: (234) 262-3000

E-Mail: CustomerCAD@timken.com • **Web site:** www.timken.com

Part Number QVPL19V307S, Single V-Lock Two-Bolt Pillow Block



[Specifications](#) | [Dimensions](#) | [Radial and Thrust Factors](#) | [Engineering Seal Speed](#) | [Engineering Bearing Attributes](#) | [Engineering Internal Radial Clearance](#)

Specifications

Engineering Group Mounted Bearing

Bearing Number 22219

Shaft Size 3 7/16 in

Shaft Size Type Imperial

Full Timken Part Number

- QVPL19V307SB
- QVPL19V307SC
- QVPL19V307SEB
- QVPL19V307SEC
- QVPL19V307SEM
- QVPL19V307SEMNP
- QVPL19V307SEMNPFG
- QVPL19V307SEN
- QVPL19V307SEO
- QVPL19V307SET
- QVPL19V307SM
- QVPL19V307SMNP
- QVPL19V307SMNPFG



QVPL19V307SN
 QVPL19V307SO
 QVPL19V307ST

Locking Style

Single V-Lock

Housing Construction

Two-Bolt Pillow Block

UPC Code

0883450113595
 0883450113618
 0883450113625
 0883450113632
 0883450172172
 0883450172936
 0883450202947
 0883450203326
 0883450215367
 0883450215749
 0883450227780
 0883450228169
 0883450493840
 0883450493857
 0883450497398
 0883450497404

Dimensions**Dimension A**

3-3/4 in
 95.3 mm

Dimension B

7.69 in
 195.3 mm

Dimension C

4.9 in
 124.5 mm

Dimension D Min

9.25 in
 235 mm

Dimension D Max

10.75 in
 273.1 mm

Dimension F

13 in
 330.2 mm

Dimension G	3.41 in 86.6 mm
--------------------	--------------------

Dimension H	1.88 in 47.8 mm
--------------------	--------------------

Dimension J (Bolt Size)	0.875 in 24 mm
--------------------------------	-------------------

Dimension L	4.02 in 102.1 mm
--------------------	---------------------

Dimension RV	0.3 in 7.6 mm
---------------------	------------------

Dimension SV	3.69 in 93.7 mm
---------------------	--------------------

Radial and Thrust Factors

C0 - Static Load	99000 lbf 441000 N
-------------------------	-----------------------

C - Dynamic Load (Basic)	86600 lbf 385000 N
---------------------------------	-----------------------

e - Geometry Factor	0.23
----------------------------	------

Y1 - Geometry Factor	2.88
-----------------------------	------

Y2 - Geometry Factor	4.29
-----------------------------	------

Engineering Seal Speed

Oil Lubrication - M/N Seal	1300 rpm
-----------------------------------	----------

Oil Lubrication - T Seal	2200 rpm
---------------------------------	----------

Oil Lubrication - B/C/O Seal	1000 rpm
-------------------------------------	----------

Grease Lubrication - M/N Seal	1300 rpm
--------------------------------------	----------

Grease Lubrication - T Seal	1800 rpm
------------------------------------	----------

Grease Lubrication - B/C/O Seal	950 rpm
--	---------

Engineering Bearing Attributes

Float	0.083 in 2.108 mm
--------------	----------------------

Shaft Tolerance	0.0030 in 0.076 mm
------------------------	-----------------------

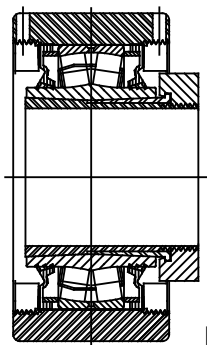
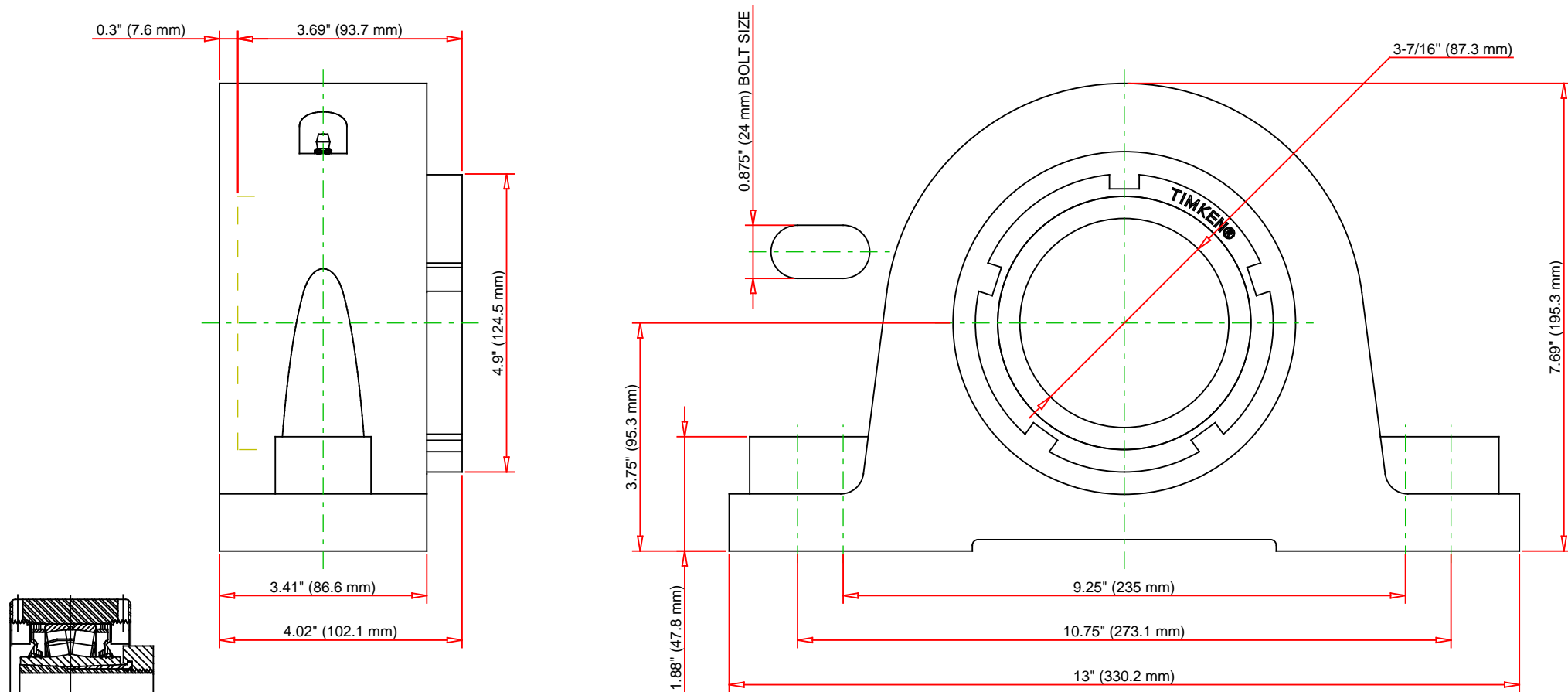
Engineering Internal Radial Clearance

Eng Internal Radial Clearance - Min	0.0043
--	--------

Eng Internal Radial Clearance - Max	0.0055
--	--------

Pre Install Clearance Min	0.0043 in 0.110 mm
----------------------------------	-----------------------

Pre Install Clearance Max	0.0055 in 0.140 mm
----------------------------------	-----------------------



Note: Section View not to Scale

C - Dynamic Load	86600	lbf	385000	N
C0 - Static Load	99000	lbf	441000	N
Weight	45	lb	20.4	kg
Max. Speed T-Seals & Grease	1800	rpm		
Rad. Clearance - Max.	0.0055			

TIMKEN

THE TIMKEN COMPANY
NORTH CANTON, OHIO USA

QVPL19V307S
Single V-Lock Two-Bolt Pillow Block

Every reasonable effort has been made to ensure the accuracy of the information contained in this writing, but no liability is accepted for errors, omissions or for any other reason.

FOR DISCUSSION ONLY