



The Timken Company

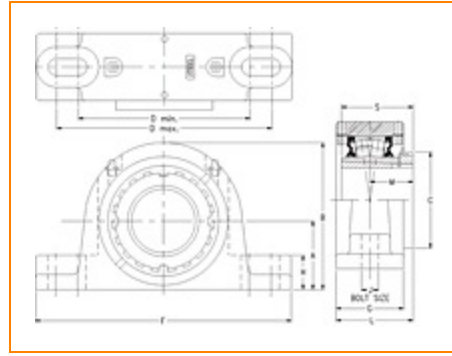
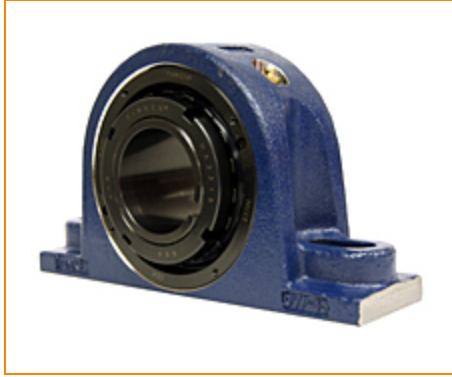
4500 Mt Pleasant St. NW

N. Canton, OH 44720

Phone: (234) 262-3000

E-Mail: CustomerCAD@timken.com • **Web site:** www.timken.com

Part Number TAPA17K215S, Tapered Adapter Two-Bolt Pillow Block



[Specifications](#) | [Dimensions](#) | [Radial and Thrust Factors](#) | [Engineering Seal Speed](#) | [Engineering Bearing Attributes](#) | [Engineering Internal Radial Clearance](#)

Specifications

Engineering Group Mounted Bearing

Bearing Number 22217

Shaft Size 2 15/16 in

Shaft Size Type Imperial

Full Timken Part Number

- TAPA17K215SB
- TAPA17K215SC
- TAPA17K215SEB
- TAPA17K215SEC
- TAPA17K215SEM
- TAPA17K215SEN
- TAPA17K215SEO
- TAPA17K215SET
- TAPA17K215SM
- TAPA17K215SN
- TAPA17K215SO
- TAPA17K215ST



Locking Style	Tapered Adapter
----------------------	-----------------

Housing Construction	Two-Bolt Pillow Block
-----------------------------	-----------------------

UPC Code	0883450125376
	0883450125383
	0883450125406
	0883450125413
	0883450125420
	0883450125437
	0883450125444
	0883450125451
	0883450197731
	0883450197939
0883450275231	
0883450275439	

Dimensions

Dimension A	3-3/4 in 95.3 mm
--------------------	---------------------

Dimension B	7.32 in 185.9 mm
--------------------	---------------------

Dimension C	4.33 in 110 mm
--------------------	-------------------

Dimension D Min	9.5 in 241.3 mm
------------------------	--------------------

Dimension D Max	11 in 279.4 mm
------------------------	-------------------

Dimension F	12.63 in 320.8 mm
--------------------	----------------------

Dimension G	3 in 76.2 mm
--------------------	-----------------

Dimension H	1.33 in 33.8 mm
--------------------	--------------------

Dimension J (Bolt Size)	0.75 in 20 mm
Dimension L	3.47 in 88.1 mm
Dimension M	1.96 in 49.8 mm
Dimension S	3.23 in 82 mm

Radial and Thrust Factors

C0 - Static Load	71900 lbf 320000 N
C - Dynamic Load (Basic)	66900 lbf 297000 N
e - Geometry Factor	0.22
Y1 - Geometry Factor	3.07
Y2 - Geometry Factor	4.57

Engineering Seal Speed

Oil Lubrication - M/N Seal	1400 rpm
Oil Lubrication - T Seal	2400 rpm
Oil Lubrication - B/C/O Seal	1100 rpm
Grease Lubrication - M/N Seal	1400 rpm
Grease Lubrication - T Seal	2000 rpm
Grease Lubrication - B/C/O Seal	1100 rpm

Engineering Bearing Attributes

Float	0.083 in 2.108 mm
--------------	----------------------

Shaft Tolerance	0.0040 in 0.102 mm
------------------------	-----------------------

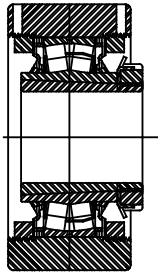
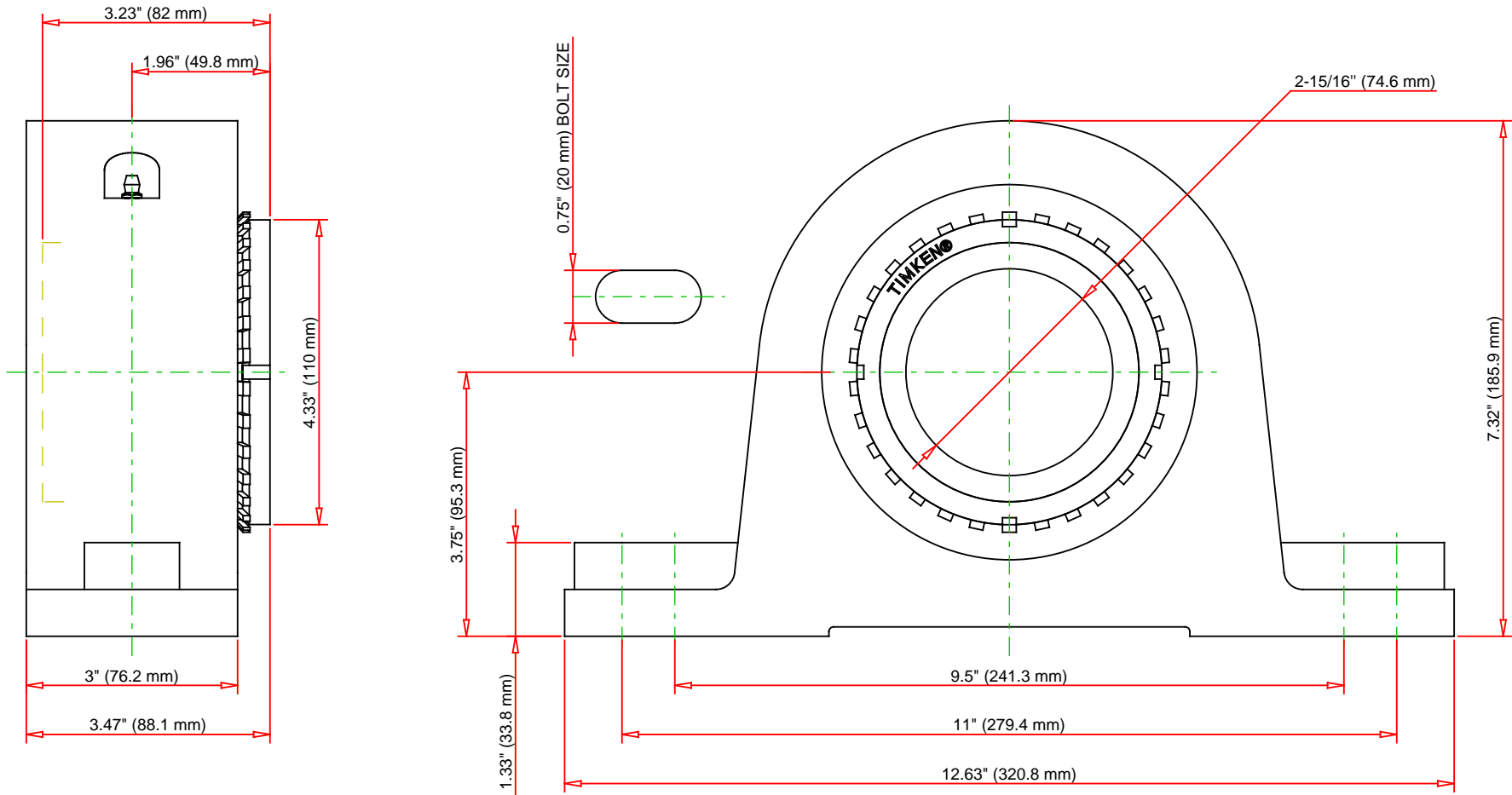
Engineering Internal Radial Clearance

Eng Internal Radial Clearance - Min	0.0043
--	--------

Eng Internal Radial Clearance - Max	0.0055
--	--------

Pre Install Clearance Min	0.0043 in 0.110 mm
----------------------------------	-----------------------

Pre Install Clearance Max	0.0055 in 0.140 mm
----------------------------------	-----------------------



Note: Section View not to Scale

C - Dynamic Load	66900	lbf	297000	N
C0 - Static Load	71900	lbf	320000	N
Weight	33	lb	15	kg
Max. Speed T-Seals & Grease	2000	rpm		
Rad. Clearance - Max.	0.0055			

TIMKEN

THE TIMKEN COMPANY
NORTH CANTON, OHIO USA

TAPA17K215S

Tapered Adapter Two-Bolt Pillow
Block

Every reasonable effort has been made to ensure the accuracy of the information contained in this writing, but no liability is accepted for errors, omissions or for any other reason.

FOR DISCUSSION ONLY