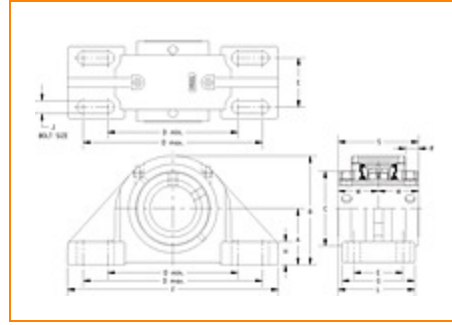
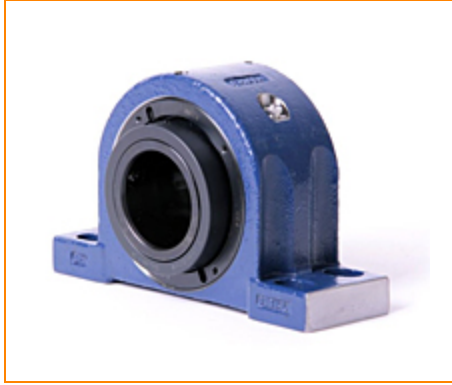



The Timken Company

4500 Mt Pleasant St. NW

N. Canton, OH 44720

Phone: (234) 262-3000

E-Mail: CustomerCAD@timken.com • **Web site:** www.timken.com
Part Number QAAPX26A415S, Double Concentric Four-Bolt Pillow Block


[Specifications](#) | [Dimensions](#) | [Radial and Thrust Factors](#) | [Engineering Seal Speed](#) | [Engineering Bearing Attributes](#) | [Engineering Internal Radial Clearance](#)

Specifications

Engineering Group Mounted Bearing

Bearing Number 22226

Shaft Size 4 15/16 in

Shaft Size Type Imperial

Full Timken Part Number
 QAAPX26A415SB
 QAAPX26A415SC
 QAAPX26A415SEB
 QAAPX26A415SEC
 QAAPX26A415SEM
 QAAPX26A415SEN
 QAAPX26A415SEO
 QAAPX26A415SET
 QAAPX26A415SM
 QAAPX26A415SN
 QAAPX26A415SO
 QAAPX26A415ST



Locking Style	Double Concentric
Housing Construction	Four-Bolt Pillow Block
UPC Code	0883450032902 0883450032919 0883450032933 0883450032940 0883450032957 0883450032964 0883450032971 0883450032988 0883450190398 0883450190619 0883450267755 0883450267977

Dimensions

Dimension A	6.13 in 155.7 mm
Dimension B	11.15 in 283.2 mm
Dimension C	6.88 in 174.8 mm
Dimension D Min	15.25 in 387.4 mm
Dimension D Max	16.75 in 425.5 mm
Dimension E	4-1/4 in 108 mm
Dimension F	20.25 in 514.4 mm
Dimension G	6.75 in 171.5 mm

Dimension H	2 in 50.8 mm
Dimension J (Bolt Size)	1.125 in 24 mm
Dimension L	7.1 in 180.3 mm
Dimension M	3.72 in 94.5 mm
Dimension RAA	1.47 in 37.3 mm
Dimension SAA	7.44 in 189 mm

Radial and Thrust Factors

C0 - Static Load	212000 lbf 945000 N
C - Dynamic Load (Basic)	170000 lbf 757000 N
e - Geometry Factor	0.26
Y1 - Geometry Factor	2.62
Y2 - Geometry Factor	3.9

Engineering Seal Speed

Oil Lubrication - M/N Seal	700 rpm
Oil Lubrication - T Seal	1500 rpm
Oil Lubrication - B/C/O Seal	400 rpm
Grease Lubrication - M/N Seal	700 rpm

Grease Lubrication - T Seal	1000 rpm
------------------------------------	----------

Grease Lubrication - B/C/O Seal	400 rpm
--	---------

Engineering Bearing Attributes

Float	0.083 in 2.108 mm
--------------	----------------------

Shaft Tolerance	0.0050 in 0.127 mm
------------------------	-----------------------

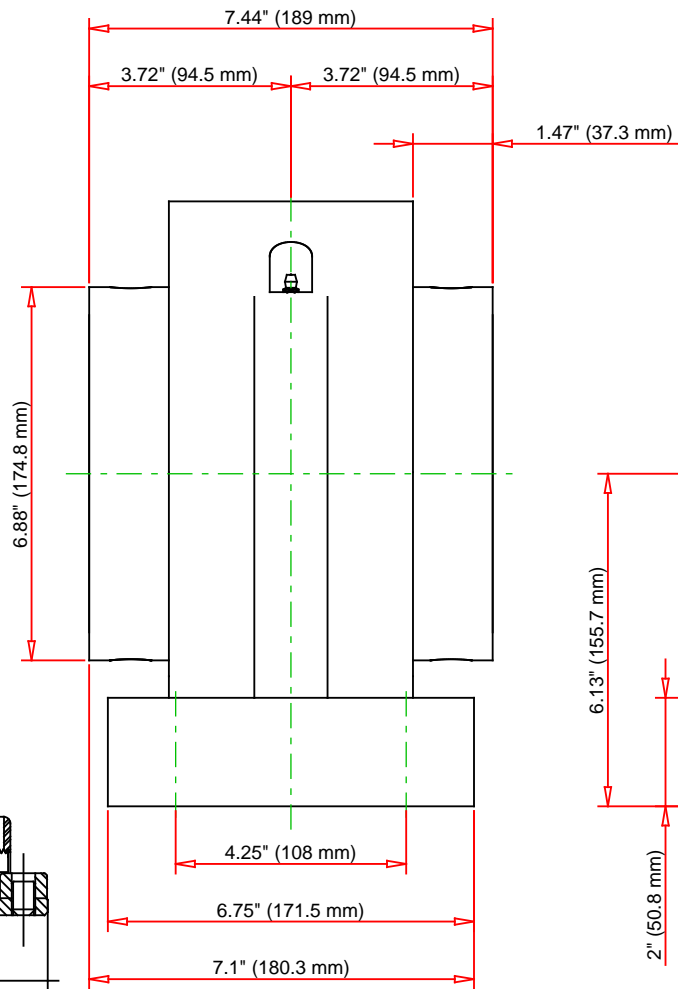
Engineering Internal Radial Clearance

Eng Internal Radial Clearance - Min	0.0037
--	--------

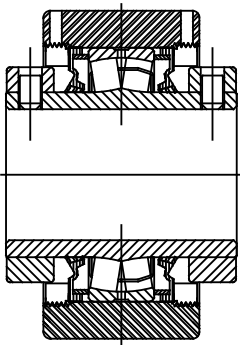
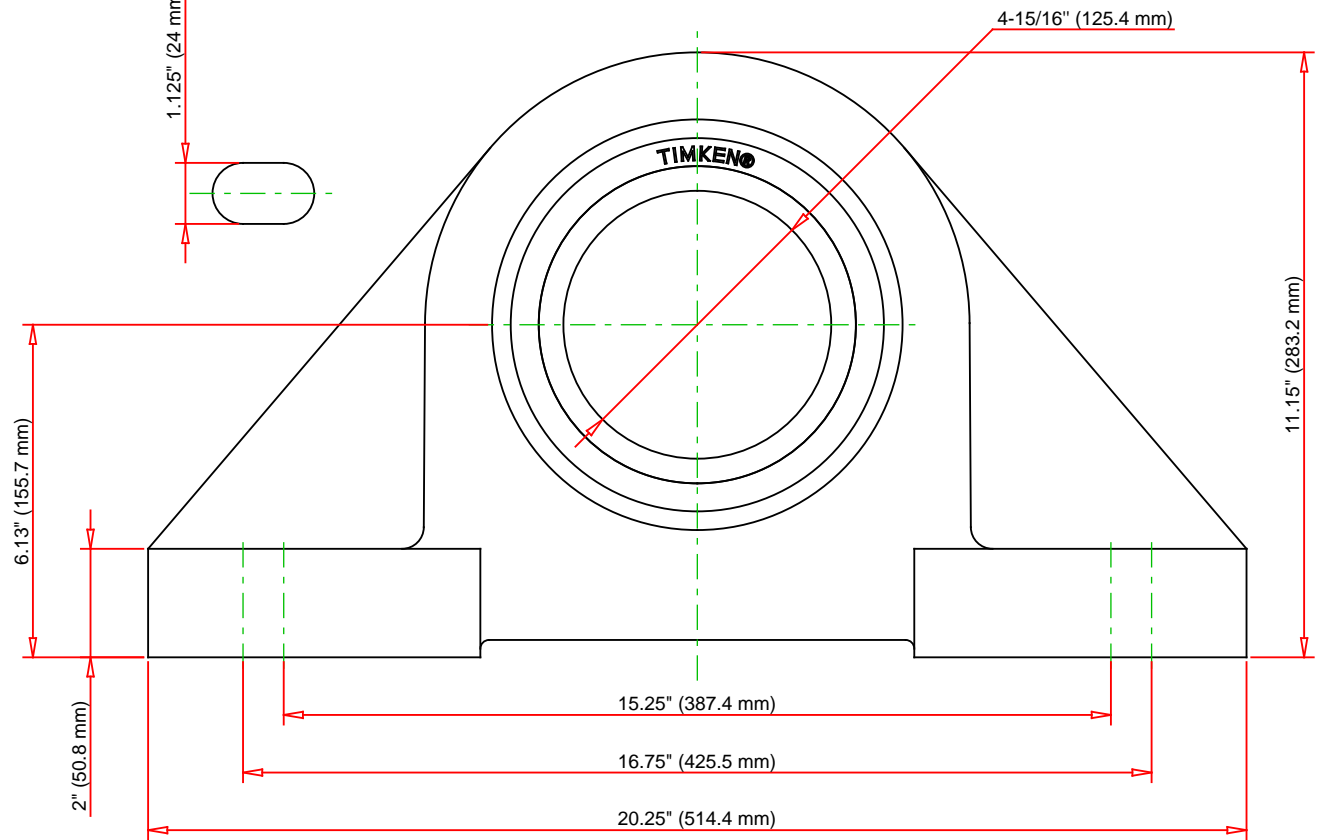
Eng Internal Radial Clearance - Max	0.0057
--	--------

Pre Install Clearance Min	0.0037 in 0.095 mm
----------------------------------	-----------------------

Pre Install Clearance Max	0.0057 in 0.145 mm
----------------------------------	-----------------------



1.125" (24 mm) BOLT SIZE



Note: Section View not to Scale

C - Dynamic Load	170000	lbf	757000	N
C0 - Static Load	212000	lbf	945000	N
Weight	149	lb	67.6	kg
Max. Speed T-Seals & Grease	1000	rpm		
Rad. Clearance - Max.	0.0057			

TIMKEN
THE TIMKEN COMPANY
NORTH CANTON, OHIO USA

QAAPX26A415S
Double Concentric Four-Bolt Pillow Block

Every reasonable effort has been made to ensure the accuracy of the information contained in this writing, but no liability is accepted for errors, omissions or for any other reason.

FOR DISCUSSION ONLY