



The Timken Company

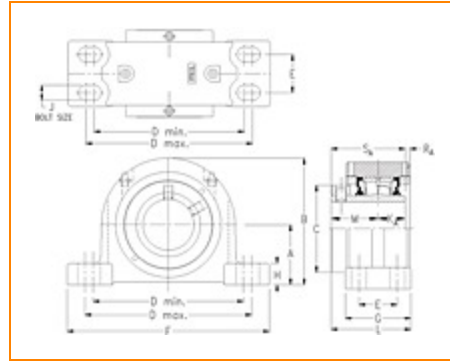
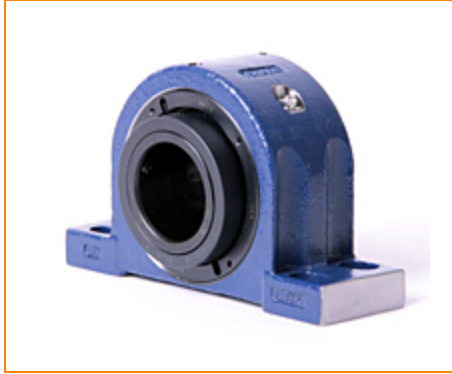
4500 Mt Pleasant St. NW

N. Canton, OH 44720

Phone: (234) 262-3000

E-Mail: CustomerCAD@timken.com • **Web site:** www.timken.com

Part Number QAPF18A307S, Single Concentric Four-Bolt Pillow Block



[Specifications](#) | [Dimensions](#) | [Radial and Thrust Factors](#) | [Engineering Seal Speed](#) | [Engineering Bearing Attributes](#) | [Engineering Internal Radial Clearance](#)

Specifications

Engineering Group Mounted Bearing

Bearing Number 22218

Shaft Size 3 7/16 in

Shaft Size Type Imperial

Full Timken Part Number

- QAPF18A307SB
- QAPF18A307SC
- QAPF18A307SEB
- QAPF18A307SEC
- QAPF18A307SEM
- QAPF18A307SEN
- QAPF18A307SEO
- QAPF18A307SET
- QAPF18A307SM
- QAPF18A307SMFG
- QAPF18A307SN
- QAPF18A307SO
- QAPF18A307ST



Locking Style	Single Concentric
Housing Construction	Four-Bolt Pillow Block

UPC Code	0883450046503
	0883450046510
	0883450046534
	0883450046541
	0883450046558
	0883450046565
	0883450046572
	0883450046589
	0883450189323
	0883450189439
0883450266666	
0883450266772	
0883450456630	

Dimensions

Dimension A	3-3/4 in 95.3 mm
Dimension B	7.69 in 195.3 mm
Dimension C	5.13 in 130.3 mm
Dimension D Min	8.88 in 225.6 mm
Dimension D Max	10.88 in 276.4 mm
Dimension E	2 in 50.8 mm
Dimension F	12.3 in 312.4 mm
Dimension G	3.75 in 95.3 mm

Dimension H	1.56 in 39.6 mm
--------------------	--------------------

Dimension J (Bolt Size)	0.75 in 20 mm
--------------------------------	------------------

Dimension KA	1.44 in 36.6 mm
---------------------	--------------------

Dimension L	4.47 in 113.5 mm
--------------------	---------------------

Dimension M	2.59 in 65.8 mm
--------------------	--------------------

Dimension RA	0.31 in 7.9 mm
---------------------	-------------------

Dimension SA	4.03 in 102.4 mm
---------------------	---------------------

Radial and Thrust Factors

C0 - Static Load	87200 lbf 388000 N
-------------------------	-----------------------

C - Dynamic Load (Basic)	79700 lbf 355000 N
---------------------------------	-----------------------

e - Geometry Factor	0.23
----------------------------	------

Y1 - Geometry Factor	2.90
-----------------------------	------

Y2 - Geometry Factor	4.31
-----------------------------	------

Engineering Seal Speed

Oil Lubrication - M/N Seal	1400 rpm
-----------------------------------	----------

Oil Lubrication - T Seal	2400 rpm
---------------------------------	----------

Oil Lubrication - B/C/O Seal	1000 rpm
-------------------------------------	----------

Grease Lubrication - M/N Seal	1400 rpm
--------------------------------------	----------

Grease Lubrication - T Seal	2000 rpm
------------------------------------	----------

Grease Lubrication - B/C/O Seal	1000 rpm
--	----------

Engineering Bearing Attributes

Float	0.083 in
	2.108 mm

Shaft Tolerance	0.0030 in
	0.076 mm

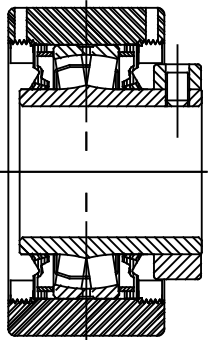
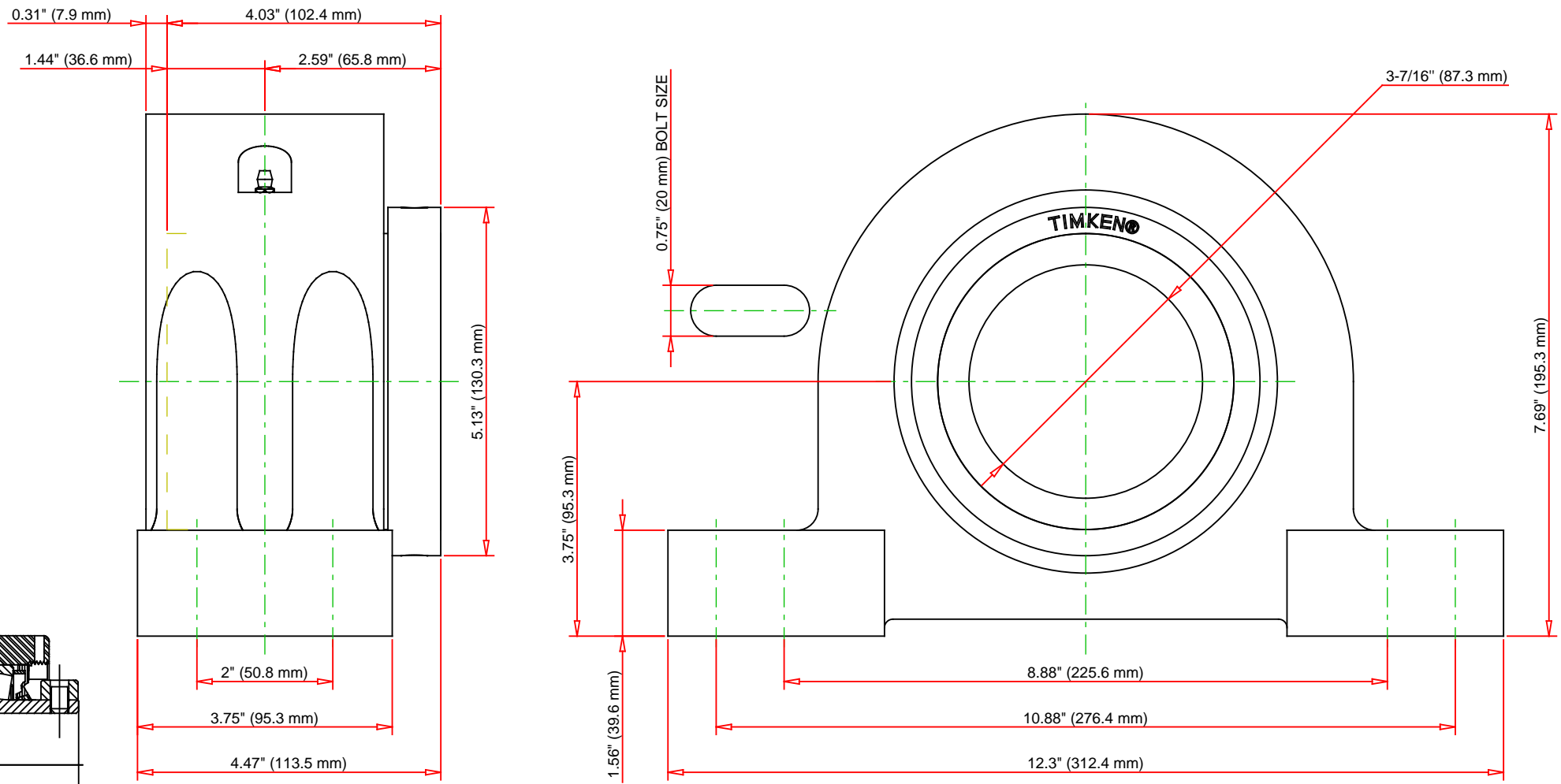
Engineering Internal Radial Clearance

Eng Internal Radial Clearance - Min	0.0024
--	--------

Eng Internal Radial Clearance - Max	0.0039
--	--------

Pre Install Clearance Min	0.0024 in
	0.060 mm

Pre Install Clearance Max	0.0039 in
	0.100 mm



Note: Section View not to Scale

C - Dynamic Load	79700	lbf	355000	N
C0 - Static Load	87200	lbf	388000	N
Weight	49	lb	22.2	kg
Max. Speed T-Seals & Grease	2000	rpm		
Rad. Clearance - Max.	0.0039			

TIMKEN

THE TIMKEN COMPANY
NORTH CANTON, OHIO USA

QAPF18A307S
Single Concentric Four-Bolt Pillow
Block

Every reasonable effort has been made to ensure the accuracy of the information contained in this writing, but no liability is accepted for errors, omissions or for any other reason.

FOR DISCUSSION ONLY