



The Timken Company

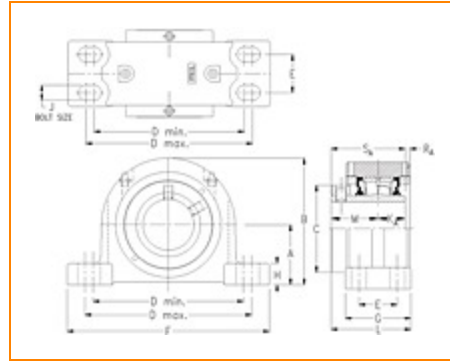
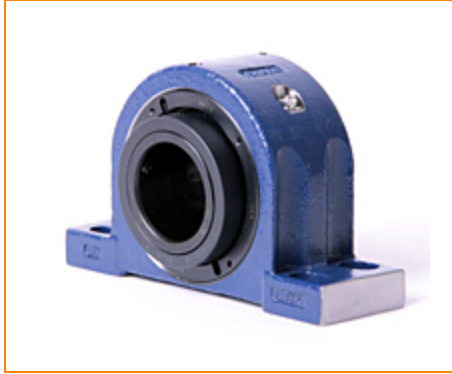
4500 Mt Pleasant St. NW

N. Canton, OH 44720

Phone: (234) 262-3000

E-Mail: CustomerCAD@timken.com • **Web site:** www.timken.com

Part Number QAPF20A400S, Single Concentric Four-Bolt Pillow Block



[Specifications](#) | [Dimensions](#) | [Radial and Thrust Factors](#) | [Engineering Seal Speed](#) | [Engineering Bearing Attributes](#) | [Engineering Internal Radial Clearance](#)

Specifications

Engineering Group Mounted Bearing

Bearing Number 22220

Shaft Size 4 in

Shaft Size Type Imperial

Full Timken Part Number

- QAPF20A400SB
- QAPF20A400SC
- QAPF20A400SEB
- QAPF20A400SEC
- QAPF20A400SEM
- QAPF20A400SEN
- QAPF20A400SEO
- QAPF20A400SET
- QAPF20A400SM
- QAPF20A400SN
- QAPF20A400SO
- QAPF20A400ST
- QAPF20A400STHT



Locking Style	Single Concentric
Housing Construction	Four-Bolt Pillow Block

UPC Code	0883450046800
	0883450046817
	0883450046831
	0883450046848
	0883450046855
	0883450046862
	0883450046879
	0883450046886
	0883450189361
	0883450189477
	0883450266703
0883450266819	
0883450959544	

Dimensions

Dimension A	4-1/4 in 108 mm
Dimension B	8.78 in 223 mm
Dimension C	6 in 152.4 mm
Dimension D Min	10.88 in 276.4 mm
Dimension D Max	13.38 in 339.9 mm
Dimension E	2-1/4 in 57.2 mm
Dimension F	14.88 in 378 mm
Dimension G	4.31 in 109.5 mm

Dimension H	1.4 in 35.6 mm
--------------------	-------------------

Dimension J (Bolt Size)	0.75 in 20 mm
--------------------------------	------------------

Dimension KA	1.63 in 41.4 mm
---------------------	--------------------

Dimension L	5.13 in 130.3 mm
--------------------	---------------------

Dimension M	2.97 in 75.4 mm
--------------------	--------------------

Dimension RA	0.35 in 8.9 mm
---------------------	-------------------

Dimension SA	4.59 in 116.6 mm
---------------------	---------------------

Radial and Thrust Factors

C0 - Static Load	113000 lbf 502000 N
-------------------------	------------------------

C - Dynamic Load (Basic)	97700 lbf 435000 N
---------------------------------	-----------------------

e - Geometry Factor	0.24
----------------------------	------

Y1 - Geometry Factor	2.85
-----------------------------	------

Y2 - Geometry Factor	4.24
-----------------------------	------

Engineering Seal Speed

Oil Lubrication - M/N Seal	1200 rpm
-----------------------------------	----------

Oil Lubrication - T Seal	2000 rpm
---------------------------------	----------

Oil Lubrication - B/C/O Seal	900 rpm
-------------------------------------	---------

Grease Lubrication - M/N Seal	1200 rpm
--------------------------------------	----------

Grease Lubrication - T Seal	1600 rpm
------------------------------------	----------

Grease Lubrication - B/C/O Seal	900 rpm
--	---------

Engineering Bearing Attributes

Float	0.083 in 2.108 mm
--------------	----------------------

Shaft Tolerance	0.0030 in 0.076 mm
------------------------	-----------------------

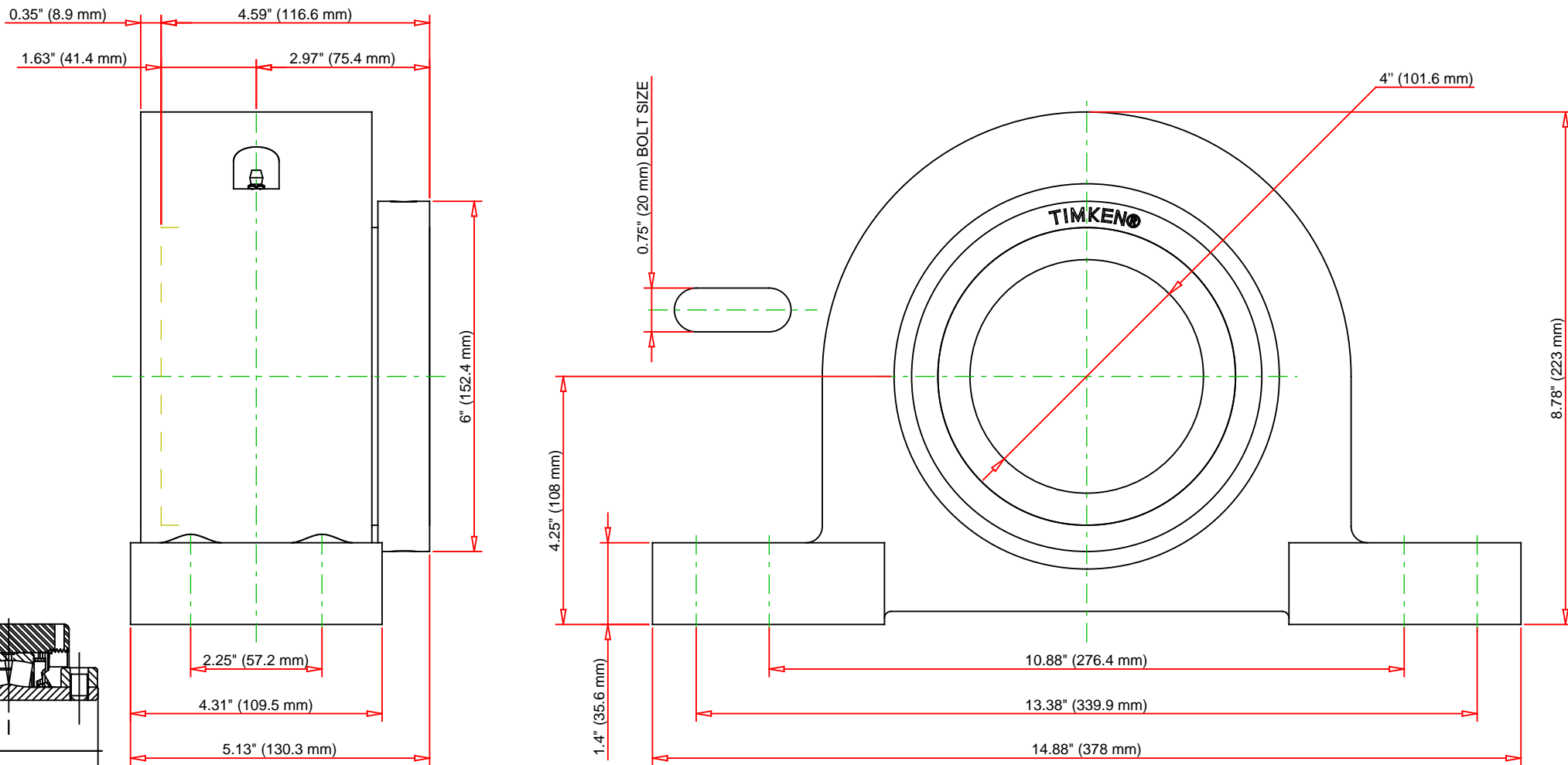
Engineering Internal Radial Clearance

Eng Internal Radial Clearance - Min	0.0030
--	--------

Eng Internal Radial Clearance - Max	0.0047
--	--------

Pre Install Clearance Min	0.0030 in 0.075 mm
----------------------------------	-----------------------

Pre Install Clearance Max	0.0047 in 0.120 mm
----------------------------------	-----------------------



Note: Section View not to Scale

C - Dynamic Load	97700	lbf	435000	N
C0 - Static Load	113000	lbf	502000	N
Weight	67	lb	30.4	kg
Max. Speed T-Seals & Grease	1600	rpm		
Rad. Clearance - Max.	0.0047			

TIMKEN

THE TIMKEN COMPANY
NORTH CANTON, OHIO USA

QAPF20A400S

Single Concentric Four-Bolt Pillow Block

Every reasonable effort has been made to ensure the accuracy of the information contained in this writing, but no liability is accepted for errors, omissions or for any other reason.

FOR DISCUSSION ONLY