



**The Timken Company**

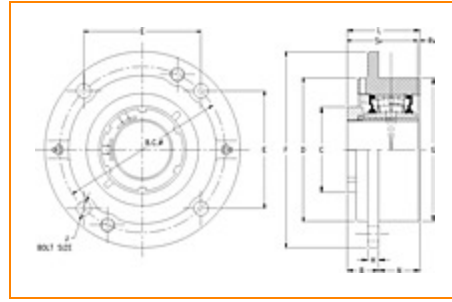
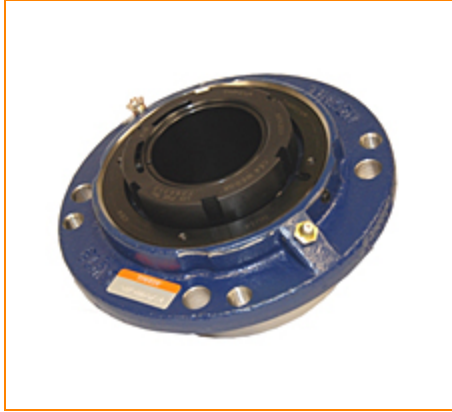
4500 Mt Pleasant St. NW

N. Canton, OH 44720

**Phone:** (234) 262-3000

**E-Mail:** [CustomerCAD@timken.com](mailto:CustomerCAD@timken.com) • **Web site:** [www.timken.com](http://www.timken.com)

## Part Number QVC22V311S, Single V-Lock Piloted Flange Cartridge



[Specifications](#) | [Dimensions](#) | [Radial and Thrust Factors](#) | [Engineering Seal Speed](#) | [Engineering Bearing Attributes](#) | [Engineering Internal Radial Clearance](#)

### Specifications

**Engineering Group** Mounted Bearing

**Bearing Number** 22222

**Shaft Size** 3 11/16 in

**Shaft Size Type** Imperial

**Full Timken Part Number**

- QVC22V311SB
- QVC22V311SC
- QVC22V311SEB
- QVC22V311SEC
- QVC22V311SEM
- QVC22V311SEN
- QVC22V311SEO
- QVC22V311SET
- QVC22V311SM
- QVC22V311SN
- QVC22V311SO
- QVC22V311ST



<b>Locking Style</b>	Single V-Lock
<b>Housing Construction</b>	Piloted Flange Cartridge

<b>UPC Code</b>	0883450090216
	0883450090643
	0883450101554
	0883450101868
	0883450108966
	0883450109109
	0883450116961
	0883450117418
	0883450131162
	0883450131599
0883450139502	
0883450139632	

## Dimensions

<b>Dimension BC</b>	9.38 in 238.3 mm
---------------------	---------------------

<b>Dimension C</b>	5.5 in 139.7 mm
--------------------	--------------------

<b>Dimension D</b>	8.76 in 222.5 mm
--------------------	---------------------

<b>Dimension E</b>	6.63 in 168.4 mm
--------------------	---------------------

<b>Dimension B Exp</b>	2.45 in 62.2 mm
------------------------	--------------------

<b>Dimension B Fix</b>	2.37 in 60.2 mm
------------------------	--------------------

<b>Dimension F</b>	10.88 in 276.4 mm
--------------------	----------------------

<b>Dimension H</b>	1 in 25.4 mm
--------------------	-----------------

<b>Dimension J (Bolt Size)</b>	0.75 in 20 mm
<b>Dimension L</b>	4.54 in 115.3 mm
<b>Dimension RV</b>	0.41 in 10.4 mm
<b>Dimension SV</b>	4.13 in 104.9 mm
<b>Dimension G</b>	8.125 in 206.4 mm
<b>Dimension N</b>	2.13 in 54.1 mm

### Radial and Thrust Factors

<b>C0 - Static Load</b>	147000 lbf 653000 N
<b>C - Dynamic Load (Basic)</b>	125000 lbf 555000 N
<b>e - Geometry Factor</b>	0.25
<b>Y1 - Geometry Factor</b>	2.73
<b>Y2 - Geometry Factor</b>	4.06

### Engineering Seal Speed

<b>Oil Lubrication - M/N Seal</b>	900 rpm
<b>Oil Lubrication - T Seal</b>	1700 rpm
<b>Oil Lubrication - B/C/O Seal</b>	600 rpm
<b>Grease Lubrication - M/N Seal</b>	900 rpm

<b>Grease Lubrication - T Seal</b>	1200 rpm
------------------------------------	----------

<b>Grease Lubrication - B/C/O Seal</b>	600 rpm
--	---------

### Engineering Bearing Attributes

<b>Float</b>	0.083 in 2.108 mm
--------------	----------------------

<b>Shaft Tolerance</b>	0.0030 in 0.076 mm
------------------------	-----------------------

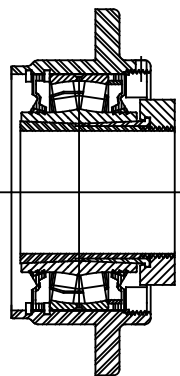
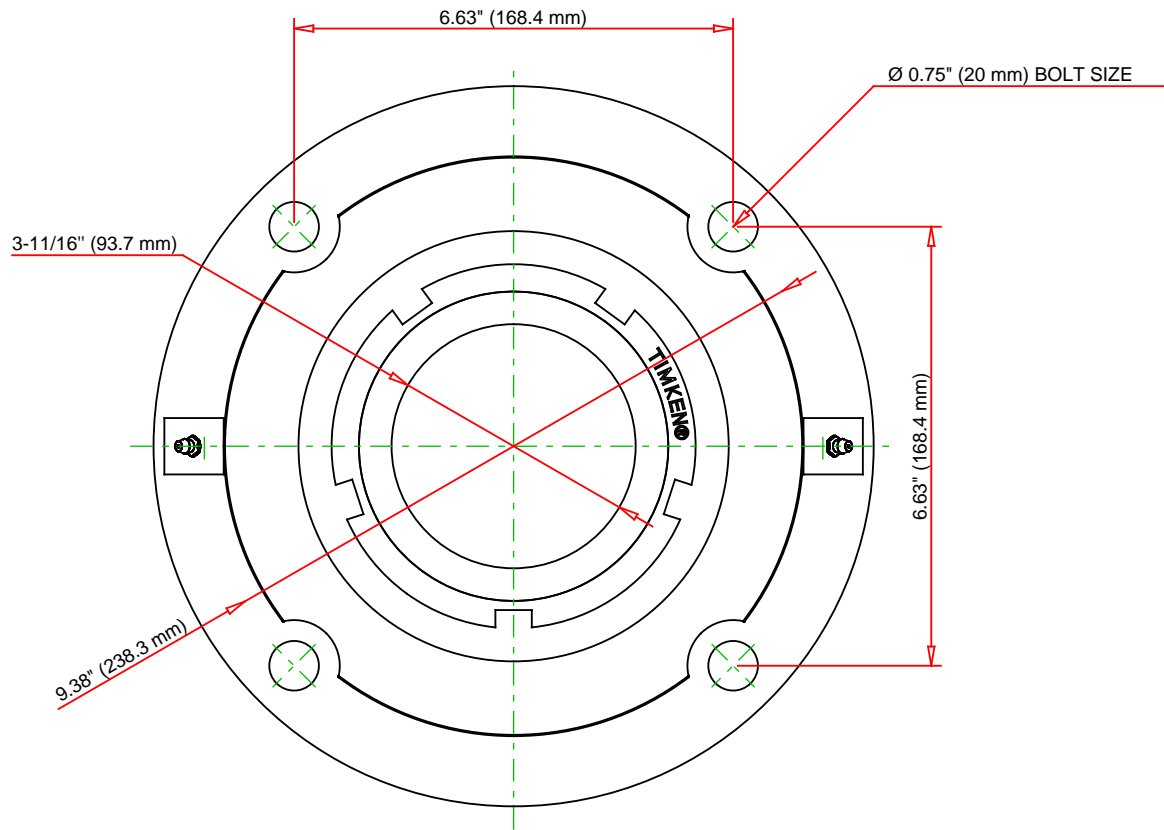
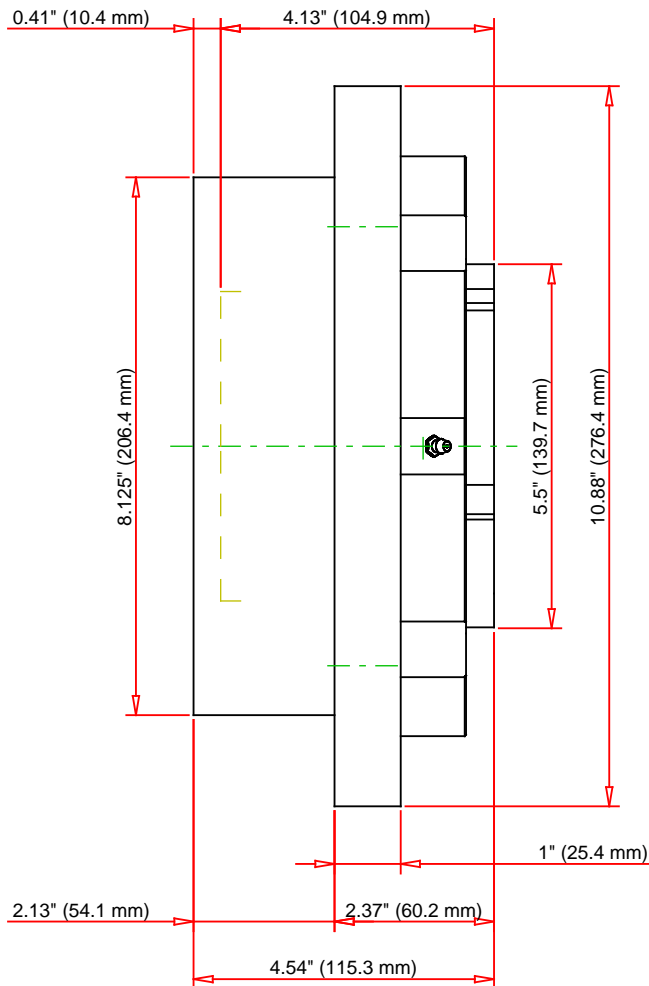
### Engineering Internal Radial Clearance

<b>Eng Internal Radial Clearance - Min</b>	0.0053
--	--------

<b>Eng Internal Radial Clearance - Max</b>	0.0067
--	--------

<b>Pre Install Clearance Min</b>	0.0053 in 0.135 mm
----------------------------------	-----------------------

<b>Pre Install Clearance Max</b>	0.0067 in 0.170 mm
----------------------------------	-----------------------



Note: Section View not to Scale

C - Dynamic Load	125000	lbf	555000	N
C0 - Static Load	147000	lbf	653000	N
Weight	43	lb	19.5	kg
Max. Speed T-Seals & Grease	1200	rpm		
Rad. Clearance - Max.	0.0067			

**TIMKEN**

THE TIMKEN COMPANY  
NORTH CANTON, OHIO USA

**QVC22V311S**  
Single V-Lock Piloted Flange Cartridge

Every reasonable effort has been made to ensure the accuracy of the information contained in this writing, but no liability is accepted for errors, omissions or for any other reason.

**FOR DISCUSSION ONLY**