



The Timken Company

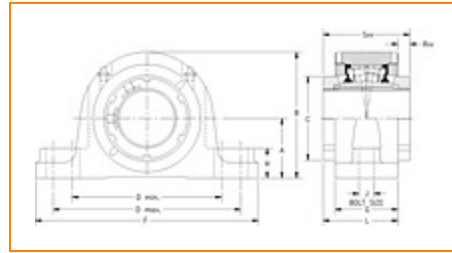
4500 Mt Pleasant St. NW

N. Canton, OH 44720

Phone: (234) 262-3000

E-Mail: CustomerCAD@timken.com • **Web site:** www.timken.com

Part Number QVVP11V200S, Double V-Lock Two-Bolt Pillow Block



[Specifications](#) | [Dimensions](#) | [Radial and Thrust Factors](#) | [Engineering Seal Speed](#) | [Engineering Bearing Attributes](#) | [Engineering Internal Radial Clearance](#)

Specifications

Engineering Group Mounted Bearing

Bearing Number 22211

Shaft Size 2 in

Shaft Size Type Imperial

Full Timken Part Number

- QVVP11V200SB
- QVVP11V200SC
- QVVP11V200SEB
- QVVP11V200SEC
- QVVP11V200SEM
- QVVP11V200SEN
- QVVP11V200SEO
- QVVP11V200SET
- QVVP11V200SM
- QVVP11V200SMT



QVVP11V200SN
 QVVP11V200SO
 QVVP11V200ST

Locking Style

Double V-Lock

Housing Construction

Two-Bolt Pillow Block

UPC Code

0883450032445
 0883450032551
 0883450095013
 0883450095440
 0883450106849
 0883450106986
 0883450113526
 0883450113786
 0883450126496
 0883450126960
 0883450137607
 0883450137690
 0883450472333

Dimensions
Dimension A

2.25 in
 57.2 mm

Dimension B

4.81 in
 122.2 mm

Dimension C

2.99 in
 75.9 mm

Dimension D Min

6 in
 152.4 mm

Dimension D Max

7.13 in
 181.1 mm

Dimension F

8.88 in
 225.6 mm

Dimension G

2.44 in
 62 mm

Dimension H	1-1/4 in 31.8 mm
Dimension J (Bolt Size)	0.625 in 16 mm
Dimension L	3.08 in 78.2 mm
Dimension RVV	0.94 in 23.9 mm
Dimension SVV	4.02 in 102.1 mm

Radial and Thrust Factors

C0 - Static Load	31900 lbf 142000 N
C - Dynamic Load (Basic)	31400 lbf 140000 N
e - Geometry Factor	0.23
Y1 - Geometry Factor	2.95
Y2 - Geometry Factor	4.40

Engineering Seal Speed

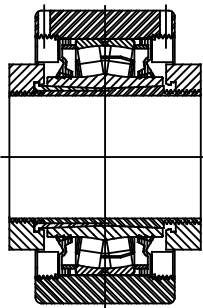
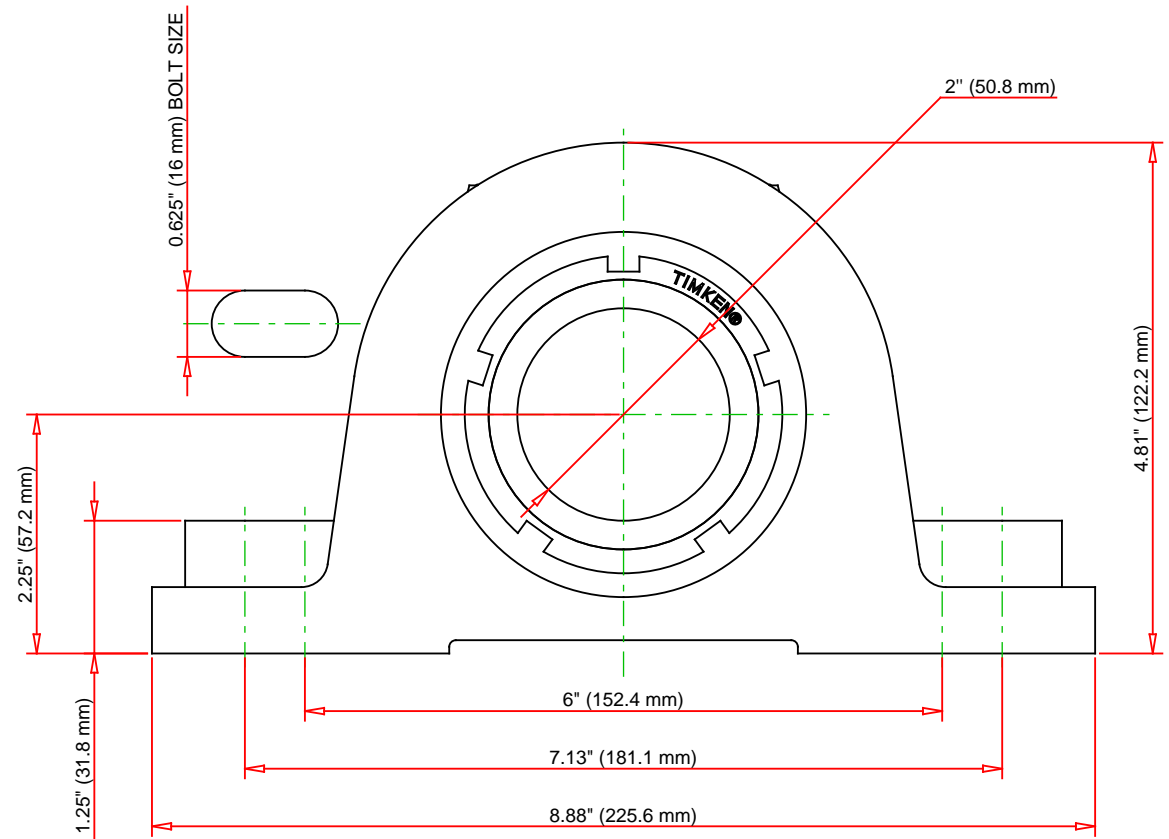
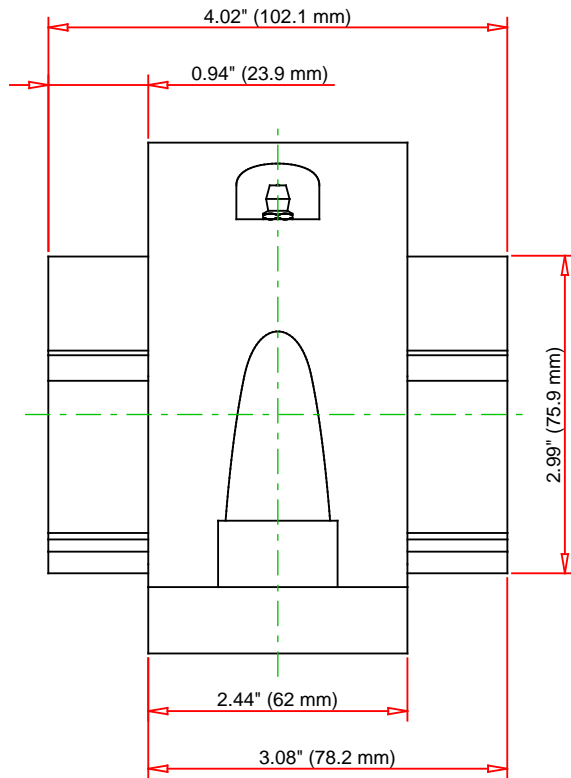
Oil Lubrication - M/N Seal	2200 rpm
Oil Lubrication - T Seal	3800 rpm
Oil Lubrication - B/C/O Seal	1800 rpm
Grease Lubrication - M/N Seal	2200 rpm
Grease Lubrication - T Seal	3200 rpm
Grease Lubrication - B/C/O Seal	1600 rpm

Engineering Bearing Attributes

Float	0.050 in 1.270 mm
Shaft Tolerance	0.0015 in 0.038 mm

Engineering Internal Radial Clearance

Eng Internal Radial Clearance - Min	0.0030
Eng Internal Radial Clearance - Max	0.0037
Pre Install Clearance Min	0.0030 in 0.075 mm
Pre Install Clearance Max	0.0037 in 0.094 mm



Note: Section View not to Scale

C - Dynamic Load	31400	lbf	140000	N
C0 - Static Load	31900	lbf	142000	N
Weight	14	lb	6.4	kg
Max. Speed T-Seals & Grease	3200	rpm		
Rad. Clearance - Max.	0.0037			

TIMKEN

THE TIMKEN COMPANY
NORTH CANTON, OHIO USA

QVVP11V200S
Double V-Lock Two-Bolt Pillow Block

Every reasonable effort has been made to ensure the accuracy of the information contained in this writing, but no liability is accepted for errors, omissions or for any other reason.

FOR DISCUSSION ONLY