



**The Timken Company**

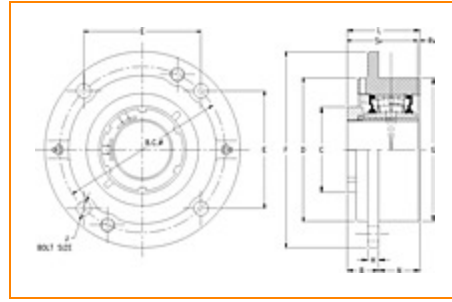
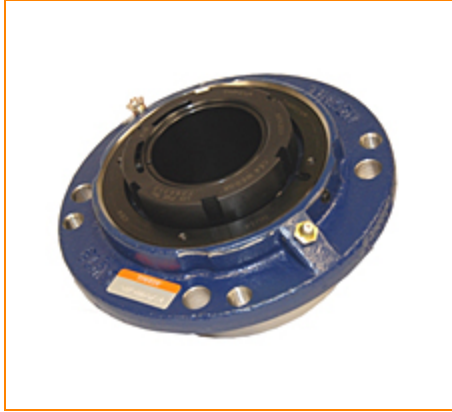
4500 Mt Pleasant St. NW

N. Canton, OH 44720

**Phone:** (234) 262-3000

**E-Mail:** [CustomerCAD@timken.com](mailto:CustomerCAD@timken.com) • **Web site:** [www.timken.com](http://www.timken.com)

## Part Number QVC12V204S, Single V-Lock Piloted Flange Cartridge



[Specifications](#) | [Dimensions](#) | [Radial and Thrust Factors](#) | [Engineering Seal Speed](#) | [Engineering Bearing Attributes](#) | [Engineering Internal Radial Clearance](#)

### Specifications

**Engineering Group** Mounted Bearing

**Bearing Number** 22212

**Shaft Size** 2 1/4 in

**Shaft Size Type** Imperial

**Full Timken Part Number**

- QVC12V204SB
- QVC12V204SC
- QVC12V204SEB
- QVC12V204SEC
- QVC12V204SEM
- QVC12V204SEN
- QVC12V204SEO
- QVC12V204SET
- QVC12V204SM
- QVC12V204SN
- QVC12V204SO
- QVC12V204ST



<b>Locking Style</b>	Single V-Lock
<b>Housing Construction</b>	Piloted Flange Cartridge

<b>UPC Code</b>	0883450090049
	0883450090513
	0883450101424
	0883450101837
	0883450108928
	0883450109055
	0883450116817
	0883450117265
	0883450130998
	0883450131469
0883450139472	
0883450139564	

## Dimensions

**Dimension BC**  
6 in  
152.4 mm

**Dimension C**  
3.16 in  
80.3 mm

**Dimension D**  
5 in  
127 mm

**Dimension E**  
4.24 in  
107.7 mm

**Dimension B Exp**  
2.10 in  
53.3 mm

**Dimension B Fix**  
2.02 in  
51.3 mm

**Dimension F**  
7.3 in  
185.4 mm

**Dimension H**  
0.58 in  
14.7 mm

<b>Dimension J (Bolt Size)</b>	0.5 in 12 mm
<b>Dimension L</b>	3.15 in 80 mm
<b>Dimension RV</b>	0.01 in 0.3 mm
<b>Dimension SV</b>	3.14 in 79.8 mm
<b>Dimension G</b>	5 in 127 mm
<b>Dimension N</b>	1.13 in 28.7 mm

### Radial and Thrust Factors

<b>C0 - Static Load</b>	39000 lbf 174000 N
<b>C - Dynamic Load (Basic)</b>	38100 lbf 169000 N
<b>e - Geometry Factor</b>	0.24
<b>Y1 - Geometry Factor</b>	2.84
<b>Y2 - Geometry Factor</b>	4.23

### Engineering Seal Speed

<b>Oil Lubrication - M/N Seal</b>	2000 rpm
<b>Oil Lubrication - T Seal</b>	3500 rpm
<b>Oil Lubrication - B/C/O Seal</b>	1650 rpm
<b>Grease Lubrication - M/N Seal</b>	2000 rpm

<b>Grease Lubrication - T Seal</b>	3000 rpm
------------------------------------	----------

<b>Grease Lubrication - B/C/O Seal</b>	1550 rpm
--	----------

### Engineering Bearing Attributes

<b>Float</b>	0.050 in 1.270 mm
--------------	----------------------

<b>Shaft Tolerance</b>	0.0015 in 0.038 mm
------------------------	-----------------------

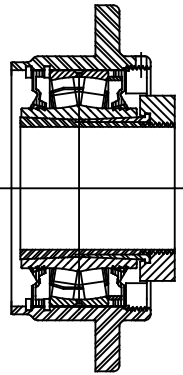
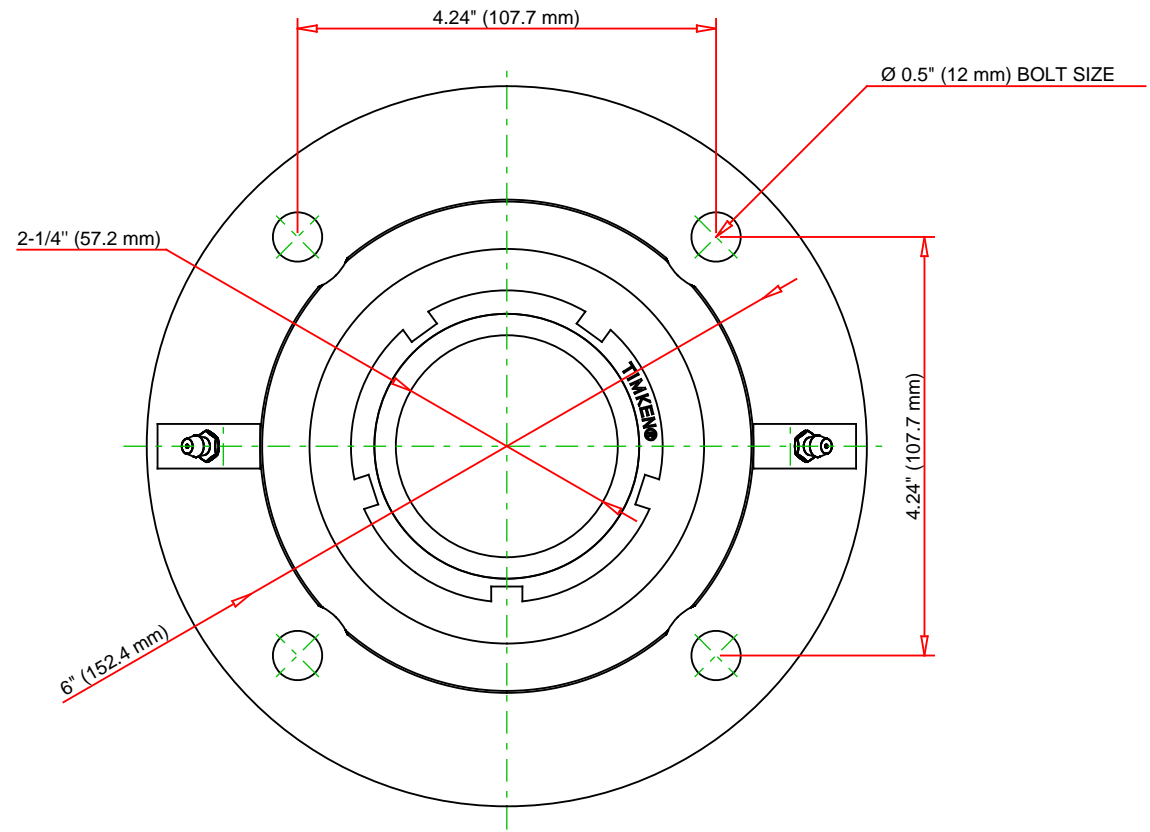
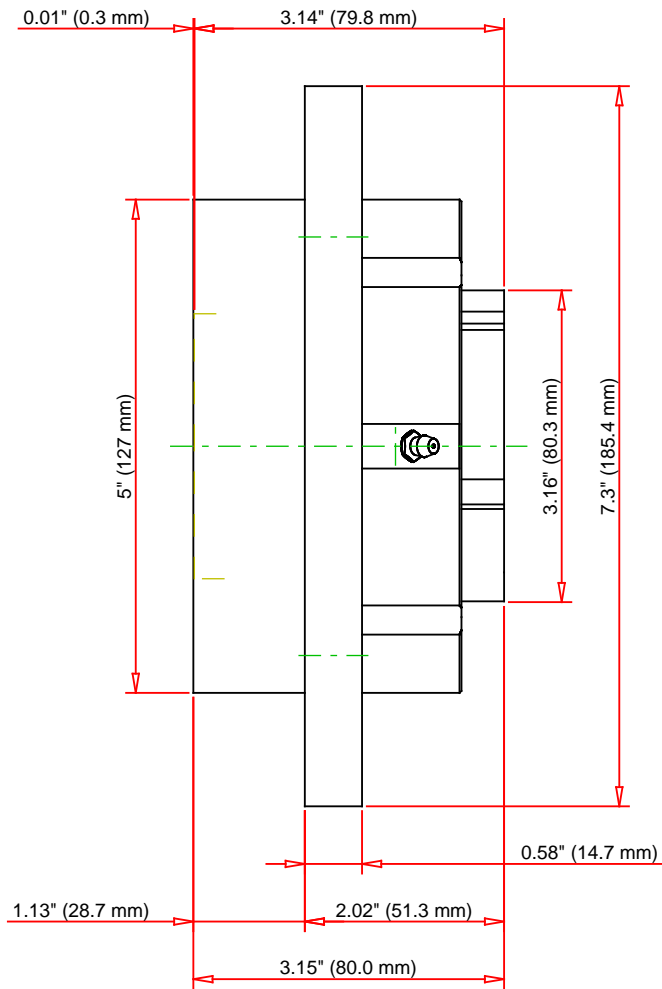
### Engineering Internal Radial Clearance

<b>Eng Internal Radial Clearance - Min</b>	0.0030
--	--------

<b>Eng Internal Radial Clearance - Max</b>	0.0037
--	--------

<b>Pre Install Clearance Min</b>	0.0030 in 0.075 mm
----------------------------------	-----------------------

<b>Pre Install Clearance Max</b>	0.0037 in 0.094 mm
----------------------------------	-----------------------



Note: Section View not to Scale

C - Dynamic Load	38100	lbf	169000	N
C0 - Static Load	39000	lbf	174000	N
Weight	13	lb	5.9	kg
Max. Speed T-Seals & Grease	3000	rpm		
Rad. Clearance - Max.	0.0037			

**TIMKEN**

THE TIMKEN COMPANY  
NORTH CANTON, OHIO USA

**QVC12V204S**

Single V-Lock Piloted Flange Cartridge

Every reasonable effort has been made to ensure the accuracy of the information contained in this writing, but no liability is accepted for errors, omissions or for any other reason.

**FOR DISCUSSION ONLY**