



The Timken Company

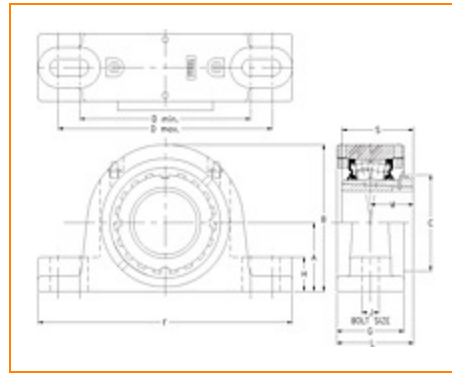
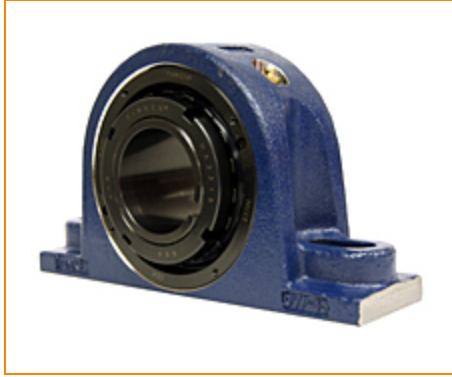
4500 Mt Pleasant St. NW

N. Canton, OH 44720

Phone: (234) 262-3000

E-Mail: CustomerCAD@timken.com • **Web site:** www.timken.com

Part Number DVP17K300S, Tapered Adapter Two-Bolt Pillow Block



[Specifications](#) | [Dimensions](#) | [Radial and Thrust Factors](#) | [Engineering Seal Speed](#) | [Engineering Bearing Attributes](#) | [Engineering Internal Radial Clearance](#)

Specifications

Engineering Group Mounted Bearing

Bearing Number 22217

Shaft Size 3 in

Shaft Size Type Imperial

Full Timken Part Number

- DVP17K300SB
- DVP17K300SC
- DVP17K300SEB
- DVP17K300SEC
- DVP17K300SEM
- DVP17K300SEN
- DVP17K300SEO
- DVP17K300SET
- DVP17K300SM
- DVP17K300SN
- DVP17K300SO
- DVP17K300ST



Locking Style	Tapered Adapter
----------------------	-----------------

Housing Construction	Two-Bolt Pillow Block
-----------------------------	-----------------------

UPC Code	0883450008624
	0883450008631
	0883450008655
	0883450008662
	0883450008679
	0883450008686
	0883450008693
	0883450008709
	0883450195737
	0883450195935
0883450273244	
0883450273442	

Dimensions

Dimension A	3.25 in 82.6 mm
--------------------	--------------------

Dimension B	6.82 in 173.2 mm
--------------------	---------------------

Dimension C	4.33 in 110 mm
--------------------	-------------------

Dimension D Min	7.88 in 200.2 mm
------------------------	---------------------

Dimension D Max	9.62 in 244.3 mm
------------------------	---------------------

Dimension F	11.63 in 295.4 mm
--------------------	----------------------

Dimension G	3 in 76.2 mm
--------------------	-----------------

Dimension H	1.38 in 35.1 mm
--------------------	--------------------

Dimension J (Bolt Size)	0.75 in 20 mm
Dimension L	3.47 in 88.1 mm
Dimension M	1.96 in 49.8 mm
Dimension S	3.23 in 82 mm

Radial and Thrust Factors

C0 - Static Load	71900 lbf 320000 N
C - Dynamic Load (Basic)	66900 lbf 297000 N
e - Geometry Factor	0.22
Y1 - Geometry Factor	3.07
Y2 - Geometry Factor	4.57

Engineering Seal Speed

Oil Lubrication - M/N Seal	1400 rpm
Oil Lubrication - T Seal	2400 rpm
Oil Lubrication - B/C/O Seal	1100 rpm
Grease Lubrication - M/N Seal	1400 rpm
Grease Lubrication - T Seal	2000 rpm
Grease Lubrication - B/C/O Seal	1100 rpm

Engineering Bearing Attributes

Float	0.083 in 2.108 mm
--------------	----------------------

Shaft Tolerance	0.0040 in 0.102 mm
------------------------	-----------------------

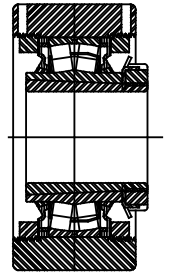
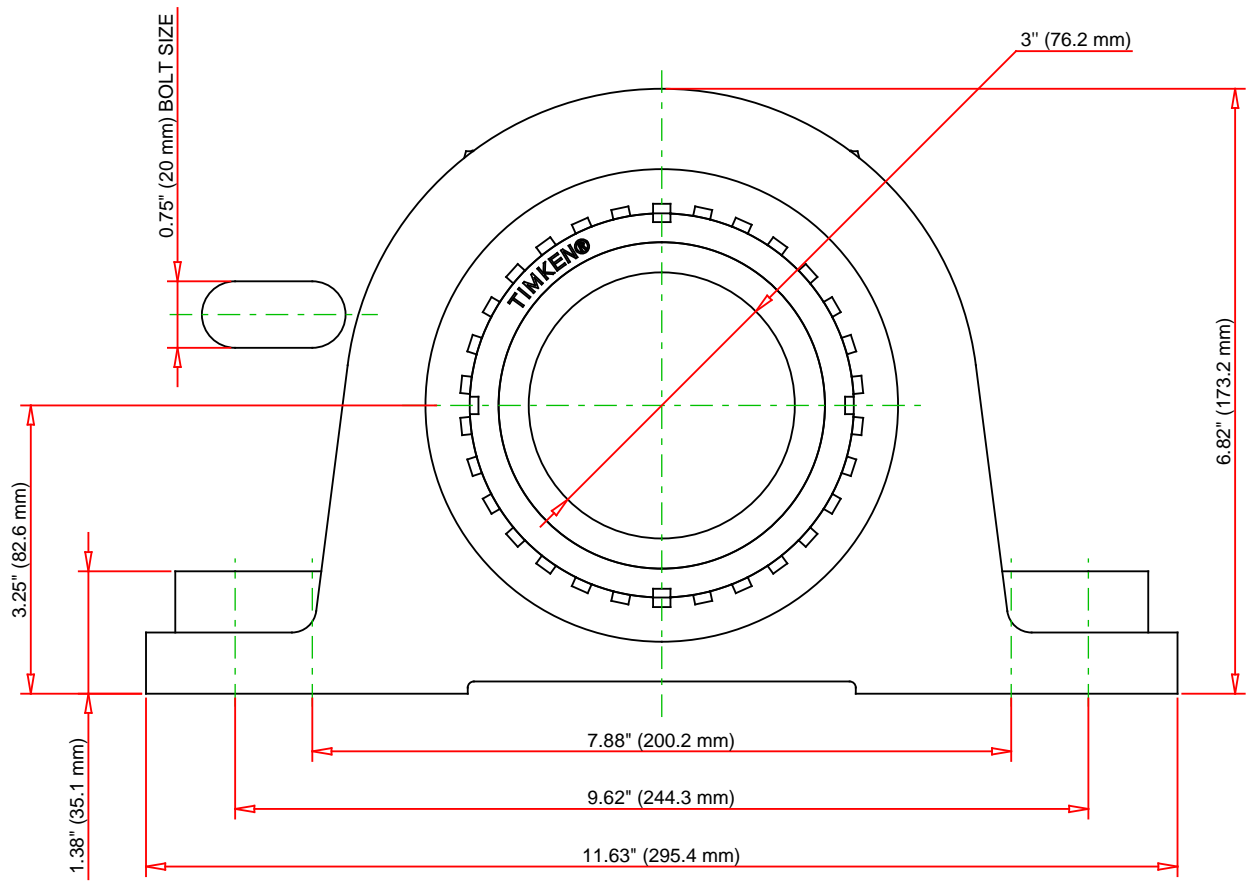
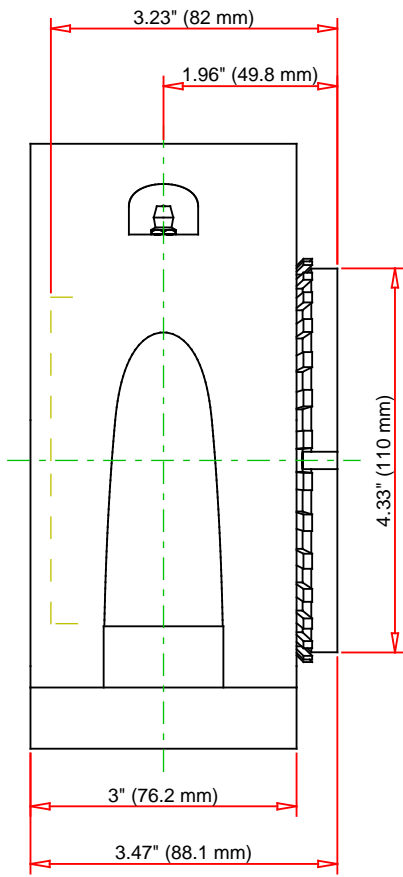
Engineering Internal Radial Clearance

Eng Internal Radial Clearance - Min	0.0043
--	--------

Eng Internal Radial Clearance - Max	0.0055
--	--------

Pre Install Clearance Min	0.0043 in 0.110 mm
----------------------------------	-----------------------

Pre Install Clearance Max	0.0055 in 0.140 mm
----------------------------------	-----------------------



Note: Section View not to Scale

C - Dynamic Load	66900	lbf	297000	N
C0 - Static Load	71900	lbf	320000	N
Weight	32	lb	14.5	kg
Max. Speed T-Seals & Grease	2000	rpm		
Rad. Clearance - Max.	0.0055			

TIMKEN
THE TIMKEN COMPANY
NORTH CANTON, OHIO USA

DVP17K300S
Tapered Adapter Two-Bolt Pillow
Block

Every reasonable effort has been made to ensure the accuracy of the information contained in this writing, but no liability is accepted for errors, omissions or for any other reason.

FOR DISCUSSION ONLY