



The Timken Company

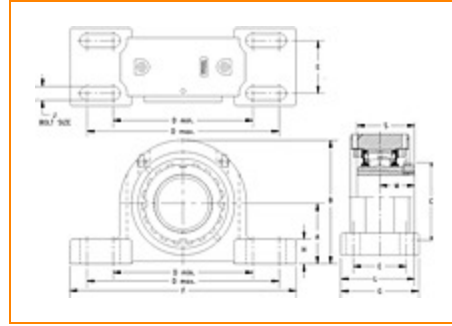
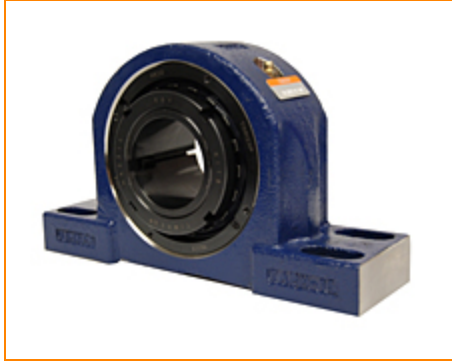
4500 Mt Pleasant St. NW

N. Canton, OH 44720

Phone: (234) 262-3000

E-Mail: CustomerCAD@timken.com • **Web site:** www.timken.com

Part Number DVPF26K407S, Tapered Adapter Four-Bolt Pillow Block



[Specifications](#) | [Dimensions](#) | [Radial and Thrust Factors](#) | [Engineering Seal Speed](#) | [Engineering Bearing Attributes](#) | [Engineering Internal Radial Clearance](#)

Specifications

Engineering Group Mounted Bearing

Bearing Number 22226

Shaft Size 4 7/16 in

Shaft Size Type Imperial

Full Timken Part Number

- DVPF26K407SB
- DVPF26K407SC
- DVPF26K407SEB
- DVPF26K407SEC
- DVPF26K407SEM
- DVPF26K407SEN
- DVPF26K407SEO
- DVPF26K407SET
- DVPF26K407SM
- DVPF26K407SN
- DVPF26K407SO
- DVPF26K407ST



Locking Style	Tapered Adapter
Housing Construction	Four-Bolt Pillow Block
UPC Code	0883450011327 0883450011334 0883450011358 0883450011365 0883450011372 0883450011389 0883450011396 0883450011402 0883450196215 0883450196413 0883450273725 0883450273923

Dimensions

Dimension A	4-3/4 in 120.7 mm
Dimension B	9.87 in 250.7 mm
Dimension C	6.5 in 165.1 mm
Dimension D Min	11.9 in 302.3 mm
Dimension D Max	14.5 in 368.3 mm
Dimension E	2-1/2 in 63.5 mm
Dimension F	16.13 in 409.7 mm
Dimension G	4.75 in 120.7 mm

Dimension H	1.58 in 40.1 mm
Dimension J (Bolt Size)	0.75 in 20 mm
Dimension L	4.87 in 123.7 mm
Dimension M	2.83 in 71.9 mm
Dimension S	4.73 in 120.1 mm

Radial and Thrust Factors

C0 - Static Load	212000 lbf 945000 N
C - Dynamic Load (Basic)	170000 lbf 757000 N
e - Geometry Factor	0.26
Y1 - Geometry Factor	2.62
Y2 - Geometry Factor	3.9

Engineering Seal Speed

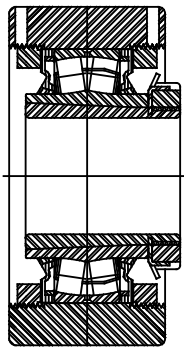
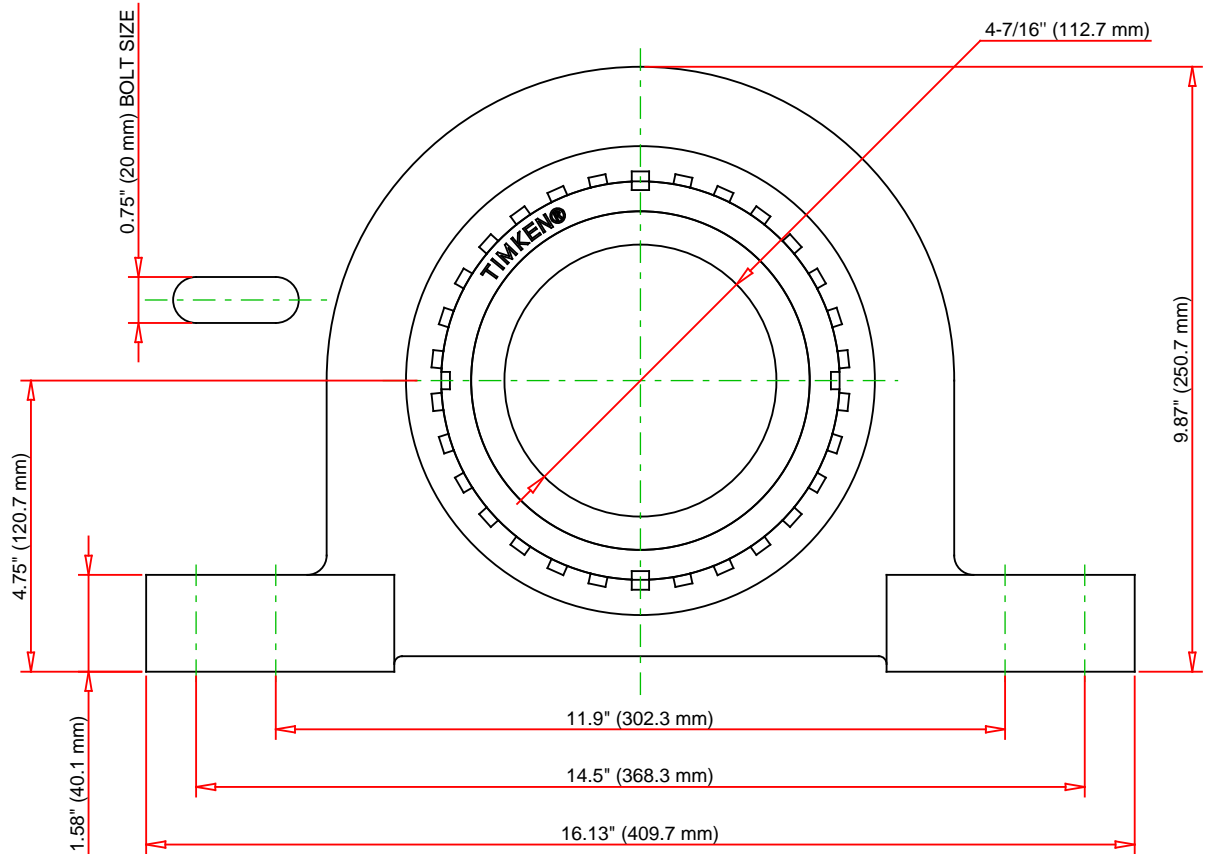
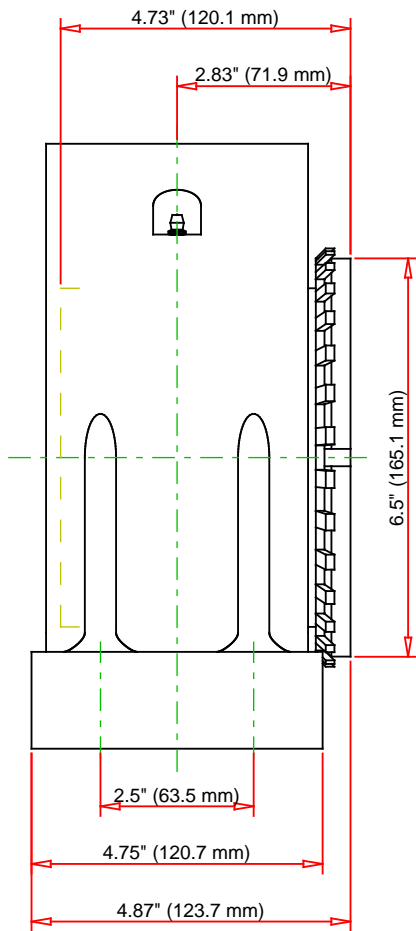
Oil Lubrication - M/N Seal	700 rpm
Oil Lubrication - T Seal	1500 rpm
Oil Lubrication - B/C/O Seal	400 rpm
Grease Lubrication - M/N Seal	700 rpm
Grease Lubrication - T Seal	1000 rpm
Grease Lubrication - B/C/O Seal	400 rpm

Engineering Bearing Attributes

Float	0.083 in 2.108 mm
Shaft Tolerance	0.0040 in 0.102 mm

Engineering Internal Radial Clearance

Pre Install Clearance Min	0.0063 in 0.160 mm
Pre Install Clearance Max	0.0079 in 0.201 mm



Note: Section View not to Scale

C - Dynamic Load	170000	lbf	757000	N
C0 - Static Load	212000	lbf	945000	N
Weight	137	lb	62.1	kg
Max. Speed T-Seals & Grease	1000	rpm		
Rad. Clearance - Max.				

TIMKEN

THE TIMKEN COMPANY
NORTH CANTON, OHIO USA

DVPF26K407S

Tapered Adapter Four-Bolt Pillow
Block

Every reasonable effort has been made to ensure the accuracy of the information contained in this writing, but no liability is accepted for errors, omissions or for any other reason.

FOR DISCUSSION ONLY