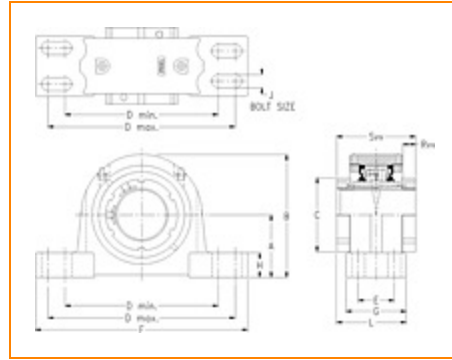
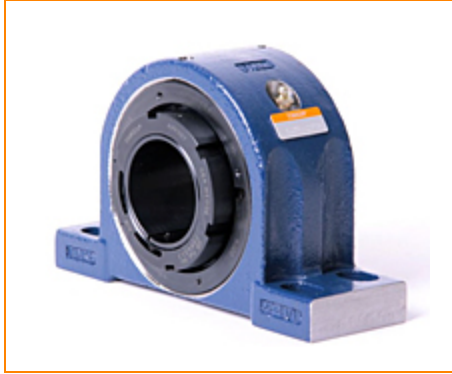


**TIMKEN****The Timken Company**

4500 Mt Pleasant St. NW

N. Canton, OH 44720

**Phone:** (234) 262-3000**E-Mail:** [CustomerCAD@timken.com](mailto:CustomerCAD@timken.com) • **Web site:** [www.timken.com](http://www.timken.com)**Part Number QVVPH28V500S, Double V-Lock Four-Bolt Pillow Block**

[Specifications](#) | [Dimensions](#) | [Radial and Thrust Factors](#) | [Engineering Seal Speed](#) | [Engineering Bearing Attributes](#) | [Engineering Internal Radial Clearance](#)

**Specifications**

**Engineering Group** Mounted Bearing

**Bearing Number** 22228

**Shaft Size** 5 in

**Shaft Size Type** Imperial

**Full Timken Part Number**

- QVVPH28V500SB
- QVVPH28V500SC
- QVVPH28V500SEB
- QVVPH28V500SEC
- QVVPH28V500SEM
- QVVPH28V500SEN
- QVVPH28V500SEO
- QVVPH28V500SET
- QVVPH28V500SM
- QVVPH28V500SN
- QVVPH28V500SO
- QVVPH28V500ST



<b>Locking Style</b>	Double V-Lock
<b>Housing Construction</b>	Four-Bolt Pillow Block
<b>UPC Code</b>	0883450370271 0883450370288 0883450370295 0883450370301 0883450370318 0883450370325 0883450370332 0883450370349 0883450370356 0883450370363 0883450370370 0883450370387

## Dimensions

<b>Dimension A</b>	6 in 152.4 mm
<b>Dimension B</b>	11.45 in 290.8 mm
<b>Dimension C</b>	7.48 in 190 mm
<b>Dimension D Min</b>	16 in 406.4 mm
<b>Dimension D Max</b>	17.13 in 435.1 mm
<b>Dimension E</b>	3.38 in 85.9 mm
<b>Dimension F</b>	19.7 in 500.4 mm
<b>Dimension G</b>	5.04 in 128 mm

<b>Dimension H</b>	2.04 in 51.8 mm
<b>Dimension J (Bolt Size)</b>	1 in 24 mm
<b>Dimension L</b>	6.02 in 152.9 mm
<b>Dimension RVV</b>	1.25 in 31.8 mm
<b>Dimension SVV</b>	7.02 in 178.3 mm

### Radial and Thrust Factors

<b>C0 - Static Load</b>	237000 lbf 1060000 N
<b>C - Dynamic Load (Basic)</b>	194000 lbf 863000 N
<b>e - Geometry Factor</b>	0.25
<b>Y1 - Geometry Factor</b>	2.67
<b>Y2 - Geometry Factor</b>	3.98

### Engineering Seal Speed

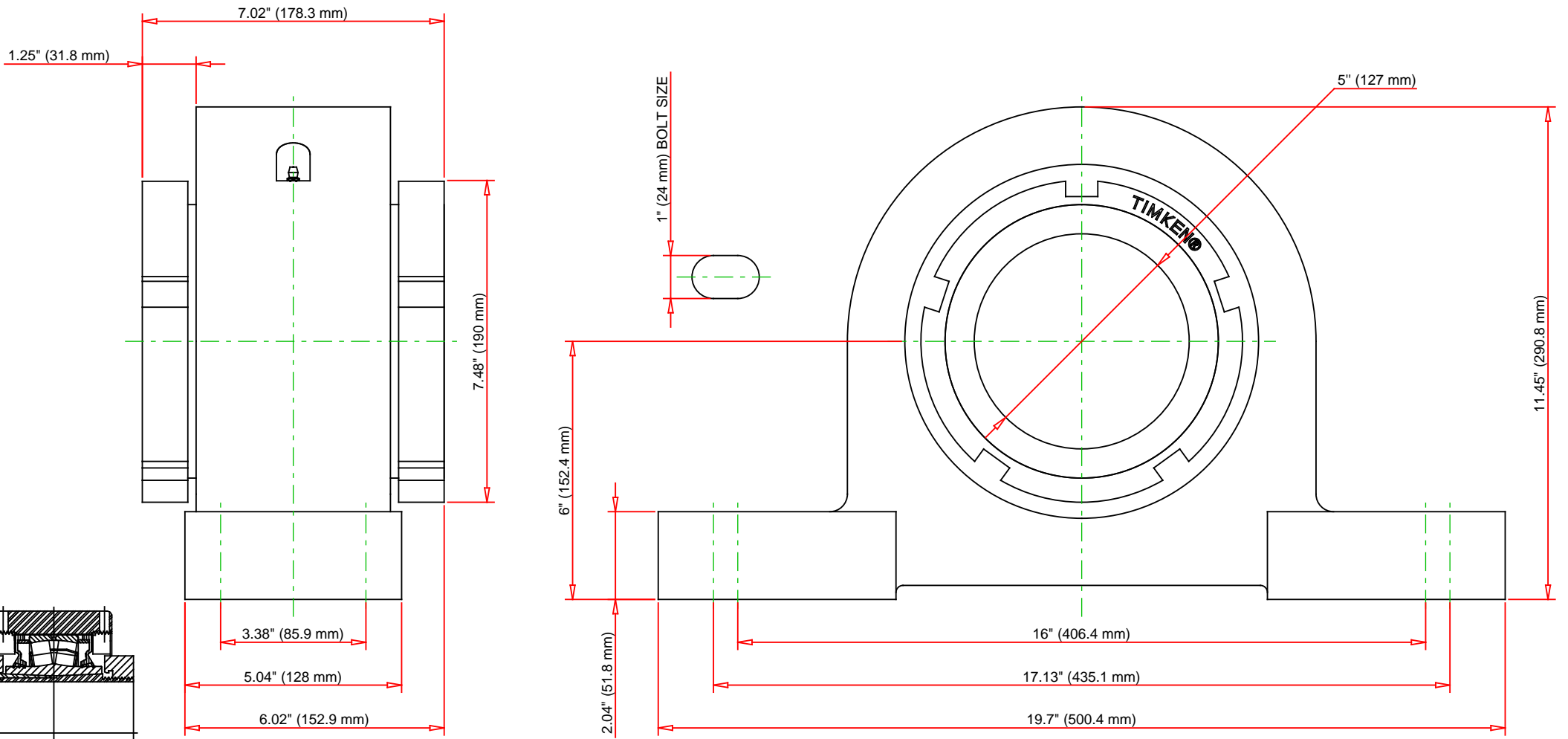
<b>Oil Lubrication - M/N Seal</b>	650 rpm
<b>Oil Lubrication - T Seal</b>	1200 rpm
<b>Oil Lubrication - B/C/O Seal</b>	350 rpm
<b>Grease Lubrication - M/N Seal</b>	650 rpm
<b>Grease Lubrication - T Seal</b>	900 rpm
<b>Grease Lubrication - B/C/O Seal</b>	350 rpm

## Engineering Bearing Attributes

<b>Float</b>	0.083 in 2.108 mm
<b>Shaft Tolerance</b>	0.0050 in 0.127 mm

## Engineering Internal Radial Clearance

<b>Eng Internal Radial Clearance - Min</b>	0.0063
<b>Eng Internal Radial Clearance - Max</b>	0.0079
<b>Pre Install Clearance Min</b>	0.0063 in 0.160 mm
<b>Pre Install Clearance Max</b>	0.0079 in 0.201 mm



Note: Section View not to Scale

C - Dynamic Load	194000	lbf	863000	N
C0 - Static Load	237000	lbf	1060000	N
Weight	136	lb	61.7	kg
Max. Speed T-Seals & Grease	900	rpm		
Rad. Clearance - Max.	0.0079			

**TIMKEN**  
 THE TIMKEN COMPANY  
 NORTH CANTON, OHIO USA

**QVVPH28V500S**  
 Double V-Lock Four-Bolt Pillow Block

Every reasonable effort has been made to ensure the accuracy of the information contained in this writing, but no liability is accepted for errors, omissions or for any other reason.

**FOR DISCUSSION ONLY**