



The Timken Company

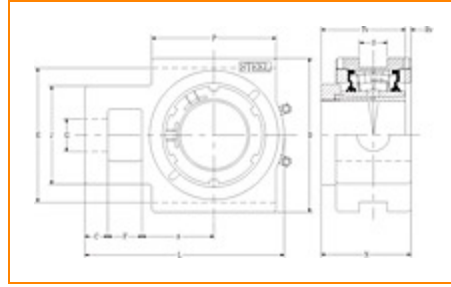
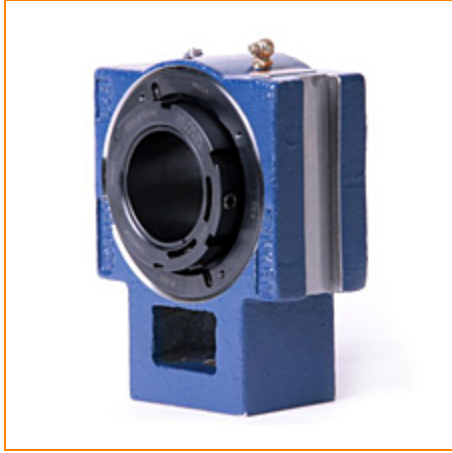
4500 Mt Pleasant St. NW

N. Canton, OH 44720

Phone: (234) 262-3000

E-Mail: CustomerCAD@timken.com • **Web site:** www.timken.com

Part Number QVTU19V304S, Single V-Lock Take-Up Block



[Specifications](#) | [Dimensions](#) | [Radial and Thrust Factors](#) | [Engineering Seal Speed](#) | [Engineering Bearing Attributes](#) | [Engineering Internal Radial Clearance](#)

Specifications

Engineering Group Mounted Bearing

Bearing Number 22219

Shaft Size 3 1/4 in

Shaft Size Type Imperial

Full Timken Part Number

- QVTU19V304SB
- QVTU19V304SC
- QVTU19V304SEB
- QVTU19V304SEC
- QVTU19V304SEM
- QVTU19V304SEN
- QVTU19V304SEO
- QVTU19V304SET
- QVTU19V304SM
- QVTU19V304SN
- QVTU19V304SO



QVTU19V304ST

Locking Style	Single V-Lock
Housing Construction	Take-Up
UPC Code	0883450360302
	0883450360319
	0883450360326
	0883450360333
	0883450360340
	0883450360357
	0883450360364
	0883450360371
	0883450360388
	0883450360395
0883450360401	
0883450360418	

Dimensions

Dimension A1	3.63 in 92.2 mm
Dimension C	1 in 25.4 mm
Dimension D	7.63 in 193.8 mm
Dimension E	6.81 in 173 mm
Dimension F	1.81 in 46 mm
Dimension G	1.88 in 47.8 mm
Dimension J	4.88 in 124 mm
Dimension L	10.12 in 257 mm

Dimension N	3.92 in 99.6 mm
--------------------	--------------------

Dimension P	6.25 in 158.8 mm
--------------------	---------------------

Dimension RV	0.02 in 0.5 mm
---------------------	-------------------

Dimension S	1.81 in 46 mm
--------------------	------------------

Dimension TV	3.9 in 99.1 mm
---------------------	-------------------

Radial and Thrust Factors

C0 - Static Load	99000 lbf 441000 N
-------------------------	-----------------------

C - Dynamic Load (Basic)	86600 lbf 385000 N
---------------------------------	-----------------------

e - Geometry Factor	0.23
----------------------------	------

Y1 - Geometry Factor	2.88
-----------------------------	------

Y2 - Geometry Factor	4.29
-----------------------------	------

Engineering Seal Speed

Oil Lubrication - M/N Seal	1300 rpm
-----------------------------------	----------

Oil Lubrication - T Seal	2200 rpm
---------------------------------	----------

Oil Lubrication - B/C/O Seal	1000 rpm
-------------------------------------	----------

Grease Lubrication - M/N Seal	1300 rpm
--------------------------------------	----------

Grease Lubrication - T Seal	1800 rpm
------------------------------------	----------

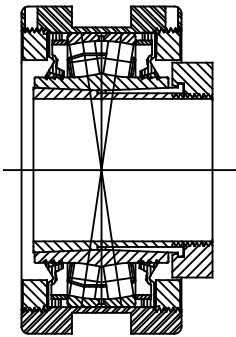
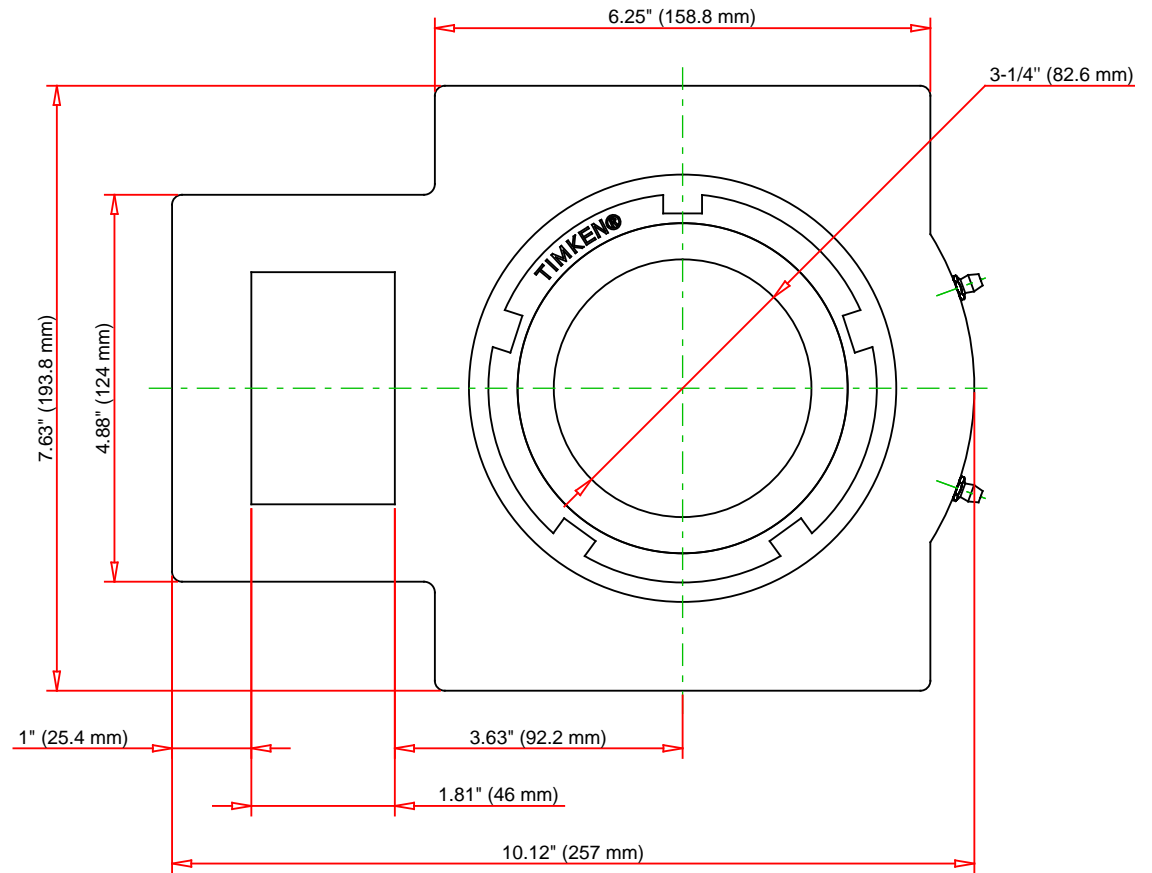
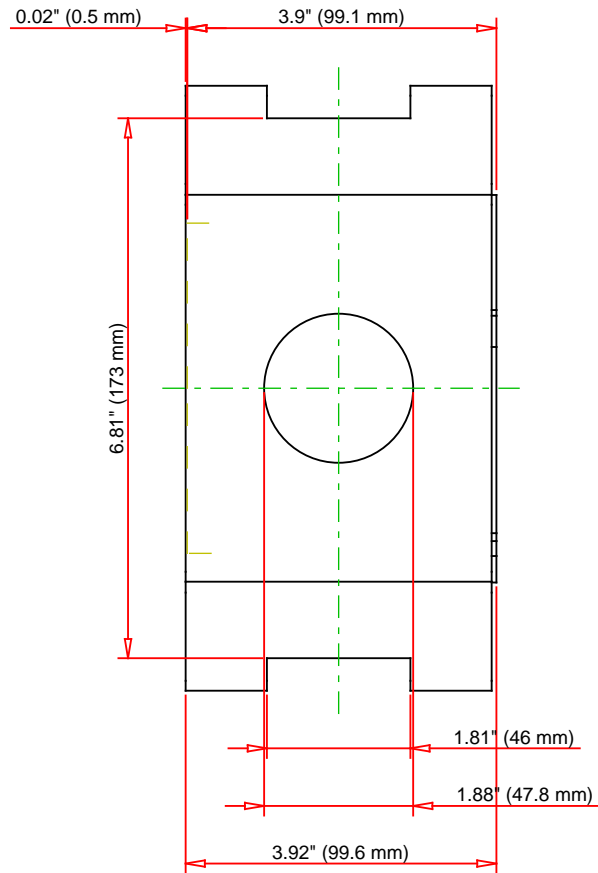
Grease Lubrication - B/C/O Seal	950 rpm
--	---------

Engineering Bearing Attributes

Float	0.08 in 2.03 mm
Shaft Tolerance	0.0030 in 0.076 mm

Engineering Internal Radial Clearance

Eng Internal Radial Clearance - Min	0.0043
Eng Internal Radial Clearance - Max	0.0055
Pre Install Clearance Min	0.0043 in 0.110 mm
Pre Install Clearance Max	0.0055 in 0.140 mm



Note: Section View not to Scale

C - Dynamic Load	86600	lbf	385000	N
C0 - Static Load	99000	lbf	441000	N
Weight	44	lb	20	kg
Max. Speed T-Seals & Grease	1800	rpm		
Rad. Clearance - Max.	0.0055			

TIMKEN

THE TIMKEN COMPANY
NORTH CANTON, OHIO USA

QVTU19V304S
Single V-Lock Take-Up Block

Every reasonable effort has been made to ensure the accuracy of the information contained in this writing, but no liability is accepted for errors, omissions or for any other reason.

FOR DISCUSSION ONLY