



**The Timken Company**

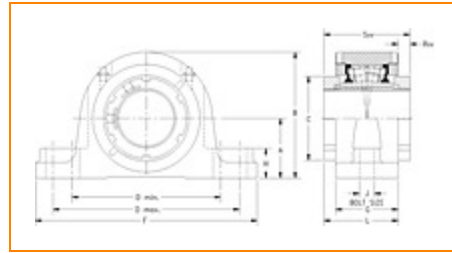
4500 Mt Pleasant St. NW

N. Canton, OH 44720

**Phone:** (234) 262-3000

**E-Mail:** [CustomerCAD@timken.com](mailto:CustomerCAD@timken.com) • **Web site:** [www.timken.com](http://www.timken.com)

## Part Number QVVSN26V115S, Double V-Lock Two-Bolt Pillow Block



[Specifications](#) | [Dimensions](#) | [Radial and Thrust Factors](#) | [Engineering Seal Speed](#) | [Engineering Bearing Attributes](#) | [Engineering Internal Radial Clearance](#)

### Specifications

**Engineering Group** Mounted Bearing

**Bearing Number** 22226

**Shaft Size** 115 mm

**Shaft Size Type** Metric

**Full Timken Part Number**

- QVVSN26V115SB
- QVVSN26V115SC
- QVVSN26V115SEB
- QVVSN26V115SEC
- QVVSN26V115SEM
- QVVSN26V115SEN
- QVVSN26V115SEO
- QVVSN26V115SET
- QVVSN26V115SM
- QVVSN26V115SN



QVWSN26V115SO  
 QVWSN26V115ST  
 QVWSN26V115STNG

**Locking Style** Double V-Lock

**Housing Construction** Two-Bolt Pillow Block

**UPC Code**

0883450081542  
 0883450081610  
 0883450286978  
 0883450287050  
 0883450288491  
 0883450288576  
 0883450290012  
 0883450290098  
 0883450291538  
 0883450291613  
 0883450293051  
 0883450293136  
 0883450460507

## Dimensions

**Dimension A**

5.91 in  
 150 mm

**Dimension B**

11.02 in  
 280 mm

**Dimension C**

6.89 in  
 175 mm

**Dimension D Min**

14.45 in  
 367 mm

**Dimension D Max**

15.75 in  
 400 mm

**Dimension F**

17.52 in  
 445 mm

**Dimension G**

4.45 in  
 113 mm

<b>Dimension H</b>	1.92 in 49 mm
<b>Dimension J (Bolt Size)</b>	0.875 in 24 mm
<b>Dimension L</b>	5.75 in 146 mm
<b>Dimension RVV</b>	1.3 in 33 mm
<b>Dimension SVV</b>	7.01 in 178 mm

### Radial and Thrust Factors

<b>C0 - Static Load</b>	212000 lbf 945000 N
<b>C - Dynamic Load (Basic)</b>	170000 lbf 757000 N
<b>e - Geometry Factor</b>	0.26
<b>Y1 - Geometry Factor</b>	2.62
<b>Y2 - Geometry Factor</b>	3.9

### Engineering Seal Speed

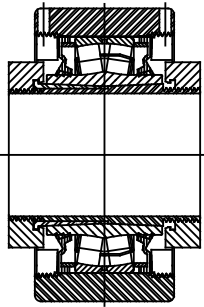
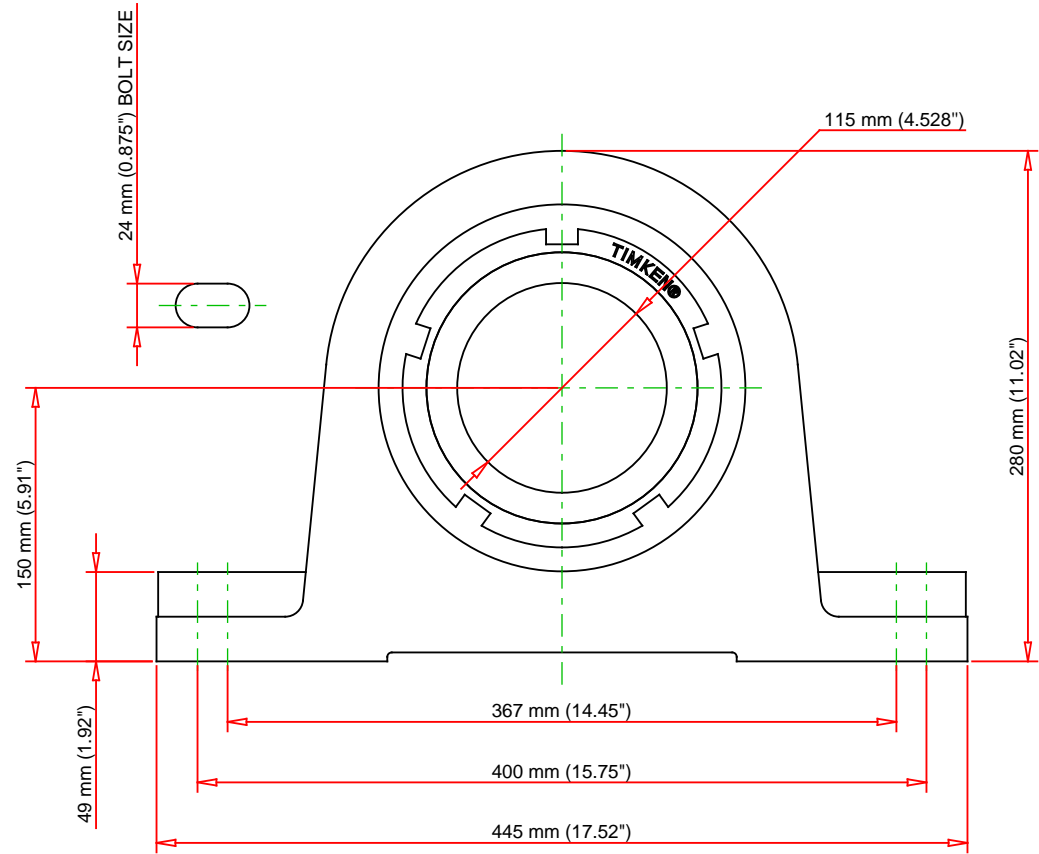
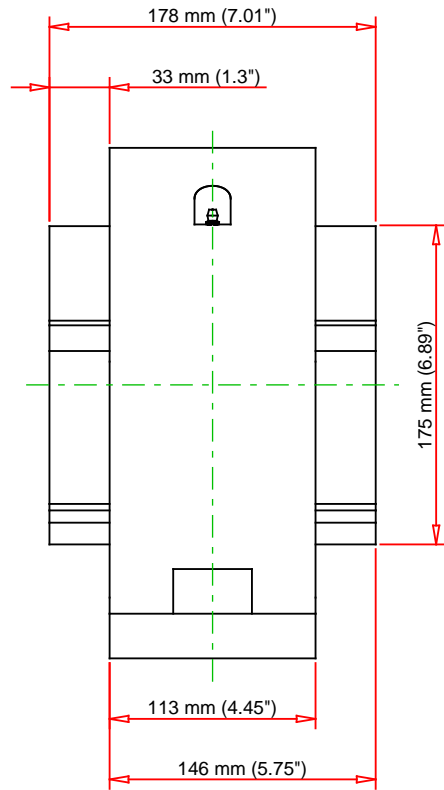
<b>Oil Lubrication - M/N Seal</b>	700 rpm
<b>Oil Lubrication - T Seal</b>	1500 rpm
<b>Oil Lubrication - B/C/O Seal</b>	400 rpm
<b>Grease Lubrication - M/N Seal</b>	700 rpm
<b>Grease Lubrication - T Seal</b>	1000 rpm
<b>Grease Lubrication - B/C/O Seal</b>	400 rpm

## Engineering Bearing Attributes

<b>Float</b>	0.083 in 2.108 mm
<b>Shaft Tolerance</b>	0.0050 in 0.127 mm

## Engineering Internal Radial Clearance

<b>Eng Internal Radial Clearance - Min</b>	0.0053
<b>Eng Internal Radial Clearance - Max</b>	0.0067
<b>Pre Install Clearance Min</b>	0.0053 in 0.135 mm
<b>Pre Install Clearance Max</b>	0.0067 in 0.170 mm



Note: Section View not to Scale

C - Dynamic Load	170000	lbf	757000	N
C0 - Static Load	212000	lbf	945000	N
Weight	88	lb	39.9	kg
Max. Speed T-Seals & Grease	1000	rpm		
Rad. Clearance - Max.	0.0067			

**TIMKEN**

THE TIMKEN COMPANY  
NORTH CANTON, OHIO USA

**QVVSN26V115S**  
Double V-Lock Two-Bolt Pillow Block

Every reasonable effort has been made to ensure the accuracy of the information contained in this writing, but no liability is accepted for errors, omissions or for any other reason.

**FOR DISCUSSION ONLY**