



The Timken Company

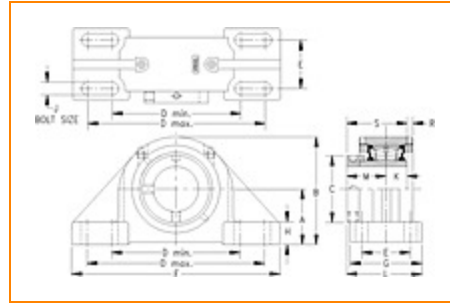
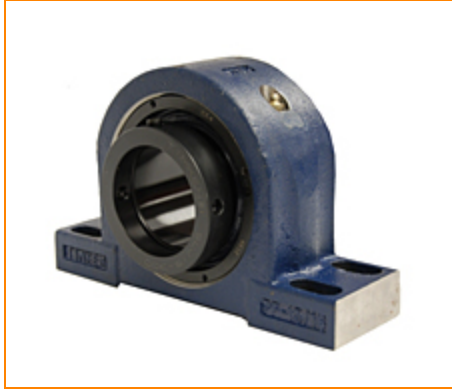
4500 Mt Pleasant St. NW

N. Canton, OH 44720

Phone: (234) 262-3000

E-Mail: CustomerCAD@timken.com • **Web site:** www.timken.com

Part Number QMPX22J408S, Eccentric Four-Bolt Pillow Block



[Specifications](#) | [Dimensions](#) | [Radial and Thrust Factors](#) | [Engineering Seal Speed](#) | [Engineering Bearing Attributes](#) | [Engineering Internal Radial Clearance](#)

Specifications

Engineering Group Mounted Bearing

Bearing Number 22222

Shaft Size 4 1/2 in

Shaft Size Type Imperial

Full Timken Part Number

- QMPX22J408SB
- QMPX22J408SC
- QMPX22J408SEB
- QMPX22J408SEC
- QMPX22J408SEM
- QMPX22J408SEN
- QMPX22J408SEO
- QMPX22J408SET
- QMPX22J408SM
- QMPX22J408SN
- QMPX22J408SO
- QMPX22J408ST



Locking Style	Eccentric
Housing Construction	Four-Bolt Pillow Block
UPC Code	0883450094924 0883450094931 0883450094955 0883450094962 0883450094979 0883450094986 0883450094993 0883450095006 0883450159562 0883450160292 0883450252850 0883450253277

Dimensions

Dimension A	5-3/4 in 146.1 mm
Dimension B	10.78 in 273.8 mm
Dimension C	6.3 in 160 mm
Dimension D Min	13.94 in 354.1 mm
Dimension D Max	15.56 in 395.2 mm
Dimension E	4 in 101.6 mm
Dimension F	19 in 469.9 mm
Dimension G	6-1/4 in 158.8 mm

Dimension H	1.8 in 45.7 mm
--------------------	-------------------

Dimension J (Bolt Size)	1 in 24 mm
--------------------------------	---------------

Dimension K	1.83 in 46.5 mm
--------------------	--------------------

Dimension L	6.74 in 171.2 mm
--------------------	---------------------

Dimension M	3.7 in 94 mm
--------------------	-----------------

Dimension R	0.09 in 2.3 mm
--------------------	-------------------

Dimension S	5.53 in 140.5 mm
--------------------	---------------------

Radial and Thrust Factors

C0 - Static Load	147000 lbf 653000 N
-------------------------	------------------------

C - Dynamic Load (Basic)	125000 lbf 555000 N
---------------------------------	------------------------

e - Geometry Factor	0.25
----------------------------	------

Y1 - Geometry Factor	2.73
-----------------------------	------

Y2 - Geometry Factor	4.06
-----------------------------	------

Engineering Seal Speed

Oil Lubrication - M/N Seal	900 rpm
-----------------------------------	---------

Oil Lubrication - T Seal	1700 rpm
---------------------------------	----------

Oil Lubrication - B/C/O Seal	600 rpm
-------------------------------------	---------

Grease Lubrication - M/N Seal	900 rpm
--------------------------------------	---------

Grease Lubrication - T Seal	1200 rpm
------------------------------------	----------

Grease Lubrication - B/C/O Seal	600 rpm
--	---------

Engineering Bearing Attributes

Float	0.083 in
	2.108 mm

Shaft Tolerance	0.0050 in
	0.127 mm

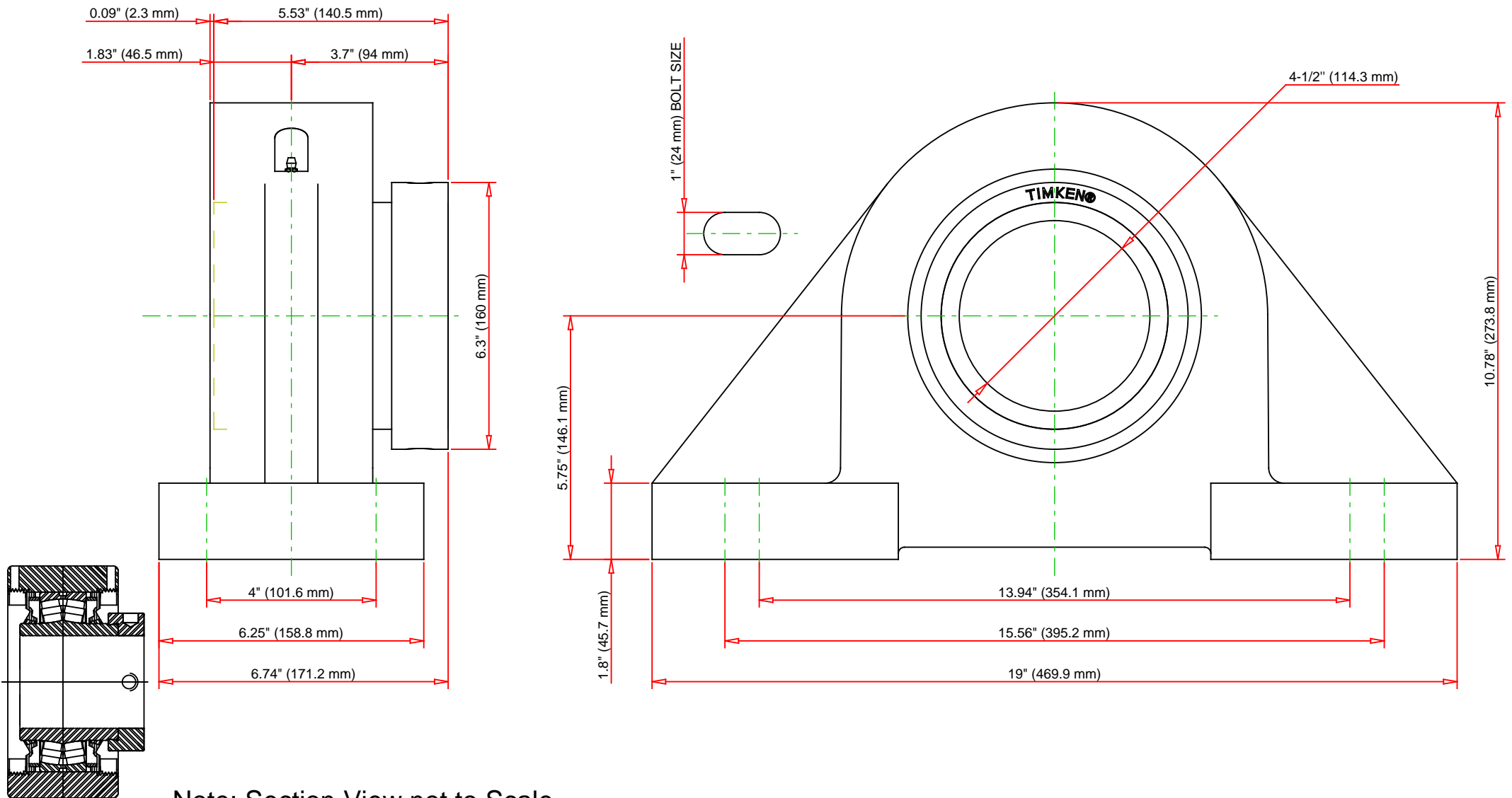
Engineering Internal Radial Clearance

Eng Internal Radial Clearance - Min	0.0030
--	--------

Eng Internal Radial Clearance - Max	0.0047
--	--------

Pre Install Clearance Min	0.0030 in
	0.075 mm

Pre Install Clearance Max	0.0047 in
	0.120 mm



C - Dynamic Load	125000	lbf	555000	N
C0 - Static Load	147000	lbf	653000	N
Weight	82	lb	37.2	kg
Max. Speed T-Seals & Grease	1200	rpm		
Rad. Clearance - Max.	0.0047			

TIMKEN

THE TIMKEN COMPANY
NORTH CANTON, OHIO USA

QMPX22J408S
Eccentric Four-Bolt Pillow Block

Every reasonable effort has been made to ensure the accuracy of the information contained in this writing, but no liability is accepted for errors, omissions or for any other reason.

FOR DISCUSSION ONLY