



**The Timken Company**

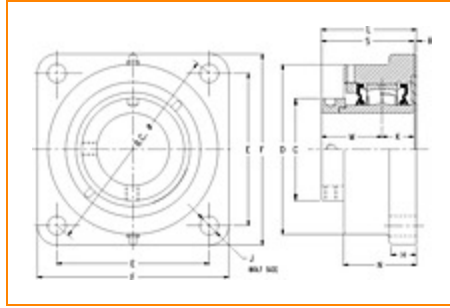
4500 Mt Pleasant St. NW

N. Canton, OH 44720

**Phone:** (234) 262-3000

**E-Mail:** [CustomerCAD@timken.com](mailto:CustomerCAD@timken.com) • **Web site:** [www.timken.com](http://www.timken.com)

Part Number QMFL20J315S, Eccentric Four Bolt Square Flange Block



[Specifications](#) | [Dimensions](#) | [Radial and Thrust Factors](#) | [Engineering Seal Speed](#) | [Engineering Bearing Attributes](#) | [Engineering Internal Radial Clearance](#)

Specifications -

<b>Engineering Group</b>	Mounted Bearing
<b>Bearing Number</b>	22220
<b>Shaft Size</b>	3 15/16 in
<b>Shaft Size Type</b>	Imperial
<b>Full Timken Part Number</b>	QMFL20J315SB QMFL20J315SC QMFL20J315SEB QMFL20J315SEC QMFL20J315SEM QMFL20J315SEN QMFL20J315SEO QMFL20J315SET QMFL20J315SM QMFL20J315SN QMFL20J315SO



QMFL20J315ST

**Locking Style**

Eccentric

**Housing Construction**

Four-Bolt Square Flange

**UPC Code**

0883450072120  
 0883450072137  
 0883450072151  
 0883450072168  
 0883450072175  
 0883450072182  
 0883450072199  
 0883450072205  
 0883450163149  
 0883450163484  
 0883450255509  
 0883450255844

**Dimensions****Dimension BC**

10.75 in  
 273.1 mm

**Dimension C**

6 in  
 152.4 mm

**Dimension D**

9.04 in  
 229.6 mm

**Dimension E**

7.6 in  
 193 mm

**Dimension F**

9.5 in  
 241.3 mm

**Dimension H**

1 1/2 in  
 38.1 mm

**Dimension J (Bolt Size)**

1 in  
 24 mm

**Dimension K**

1.63 in  
 41.4 mm

<b>Dimension L Exp</b>	5.29 in 134.4 mm
------------------------	---------------------

<b>Dimension L Fix</b>	5.21 in 132.3 mm
------------------------	---------------------

<b>Dimension M</b>	2.96 in 75.2 mm
--------------------	--------------------

<b>Dimension N</b>	4.12 in 104.6 mm
--------------------	---------------------

<b>Dimension R</b>	0.62 in 15.7 mm
--------------------	--------------------

<b>Dimension S</b>	4.59 in 116.6 mm
--------------------	---------------------

## Radial and Thrust Factors

<b>C0 - Static Load</b>	113000 lbf 502000 N
-------------------------	------------------------

<b>C - Dynamic Load (Basic)</b>	97700 lbf 435000 N
---------------------------------	-----------------------

<b>e - Geometry Factor</b>	0.24
----------------------------	------

<b>Y1 - Geometry Factor</b>	2.84
-----------------------------	------

<b>Y2 - Geometry Factor</b>	4.23
-----------------------------	------

## Engineering Seal Speed

<b>Oil Lubrication - M/N Seal</b>	1200 rpm
-----------------------------------	----------

<b>Oil Lubrication - T Seal</b>	2000 rpm
---------------------------------	----------

<b>Oil Lubrication - B/C/O Seal</b>	900 rpm
-------------------------------------	---------

<b>Grease Lubrication - M/N Seal</b>	1200 rpm
--------------------------------------	----------

<b>Grease Lubrication - T Seal</b>	1600 rpm
------------------------------------	----------

<b>Grease Lubrication - B/C/O Seal</b>	900 rpm
--	---------

### Engineering Bearing Attributes

<b>Float</b>	0.083 in 2.108 mm
--------------	----------------------

<b>Shaft Tolerance</b>	0.0030 in 0.076 mm
------------------------	-----------------------

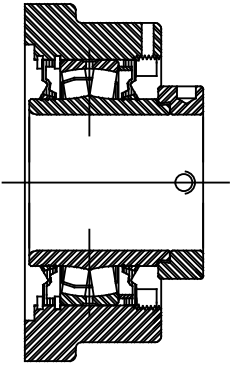
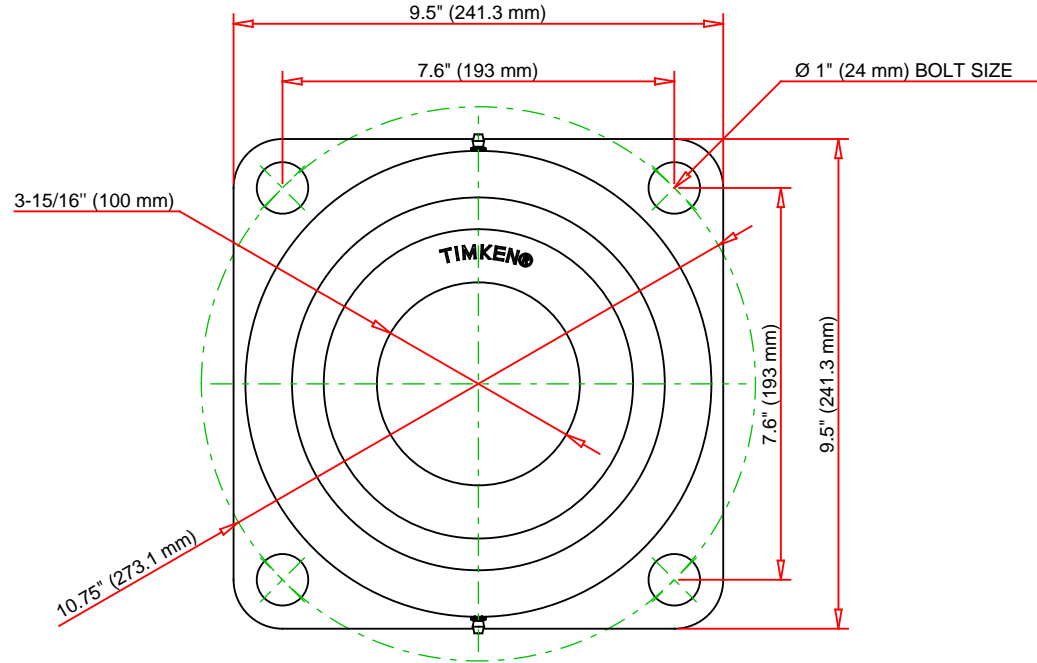
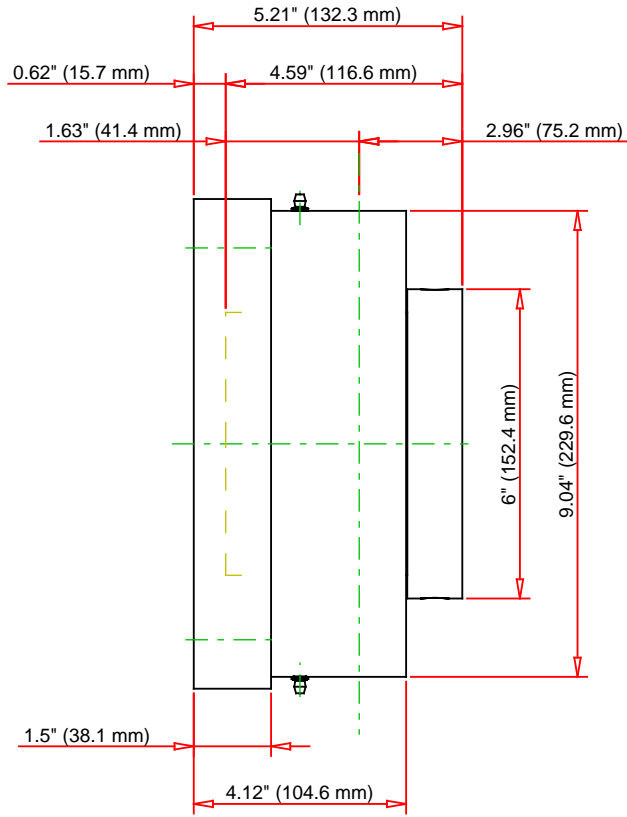
### Engineering Internal Radial Clearance

<b>Eng Internal Radial Clearance - Min</b>	0.003
--	-------

<b>Eng Internal Radial Clearance - Max</b>	0.0047
--	--------

<b>Pre Install Clearance Min</b>	0.0030 in 0.075 mm
----------------------------------	-----------------------

<b>Pre Install Clearance Max</b>	0.0047 in 0.120 mm
----------------------------------	-----------------------



Note: Section View not to Scale

C - Dynamic Load	97700	lbf	435000	N
C0 - Static Load	113000	lbf	502000	N
Weight	55	lb	24.9	kg
Max. Speed T-Seals & Grease	1600	rpm		
Rad. Clearance - Max.	0.0047			

**TIMKEN**

THE TIMKEN COMPANY  
NORTH CANTON, OHIO USA

**QMFL20J315S**

Eccentric Four Bolt Square Flange  
Block

Every reasonable effort has been made to ensure the accuracy of the information contained in this writing, but no liability is accepted for errors, omissions or for any other reason.

**FOR DISCUSSION ONLY**