



The Timken Company

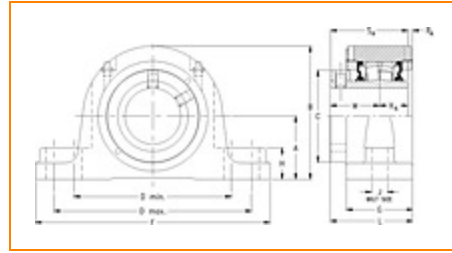
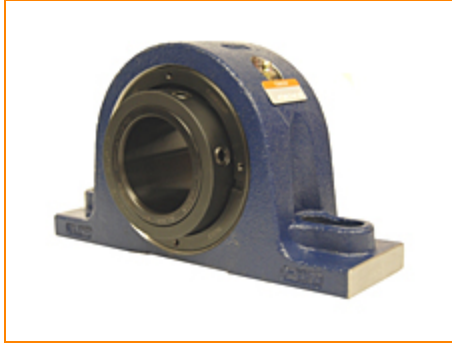
4500 Mt Pleasant St. NW

N. Canton, OH 44720

Phone: (234) 262-3000

E-Mail: CustomerCAD@timken.com • **Web site:** www.timken.com

Part Number QAPL13A207S, Single Concentric Two-Bolt Pillow Block



[Specifications](#) | [Dimensions](#) | [Radial and Thrust Factors](#) | [Engineering Seal Speed](#) | [Engineering Bearing Attributes](#) | [Engineering Internal Radial Clearance](#)

Specifications

Engineering Group Mounted Bearing

Bearing Number 22213

Shaft Size 2 7/16 in

Shaft Size Type Imperial

Full Timken Part Number

- QAPL13A207SB
- QAPL13A207SC
- QAPL13A207SEB
- QAPL13A207SEC
- QAPL13A207SEM
- QAPL13A207SEN
- QAPL13A207SENHT
- QAPL13A207SEO
- QAPL13A207SET
- QAPL13A207SM
- QAPL13A207SMT



QAPL13A207SN
 QAPL13A207SO
 QAPL13A207ST
 QAPL13A207STHT
 QAPL13A207STM

Locking Style Single Concentric

Housing Construction Two-Bolt Pillow Block

UPC Code

0883450047500
 0883450047517
 0883450047531
 0883450047548
 0883450047555
 0883450047562
 0883450047579
 0883450047586
 0883450188517
 0883450188678
 0883450266017
 0883450266178
 0883450472555
 0883450959520
 0883450959537
 0883450961394

Dimensions

Dimension A 2.75 in
 69.9 mm

Dimension B 5.8 in
 147.3 mm

Dimension C 3.81 in
 96.8 mm

Dimension D Min 6.81 in
 173 mm

Dimension D Max 7.44 in
 189 mm

Dimension F	9 1/4 in 235 mm
Dimension G	2.9 in 73.7 mm
Dimension H	1.38 in 35.1 mm
Dimension J (Bolt Size)	0.625 in 16 mm
Dimension KA	1.24 in 31.5 mm
Dimension L	3.6 in 91.4 mm
Dimension M	2.15 in 54.6 mm
Dimension RA	0.21 in 5.3 mm
Dimension SA	3.39 in 86.1 mm

Radial and Thrust Factors

C0 - Static Load	48600 lbf 216000 N
C - Dynamic Load (Basic)	46400 lbf 206000 N
e - Geometry Factor	0.24
Y1 - Geometry Factor	2.79
Y2 - Geometry Factor	4.15

Engineering Seal Speed

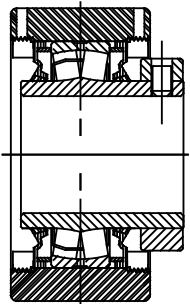
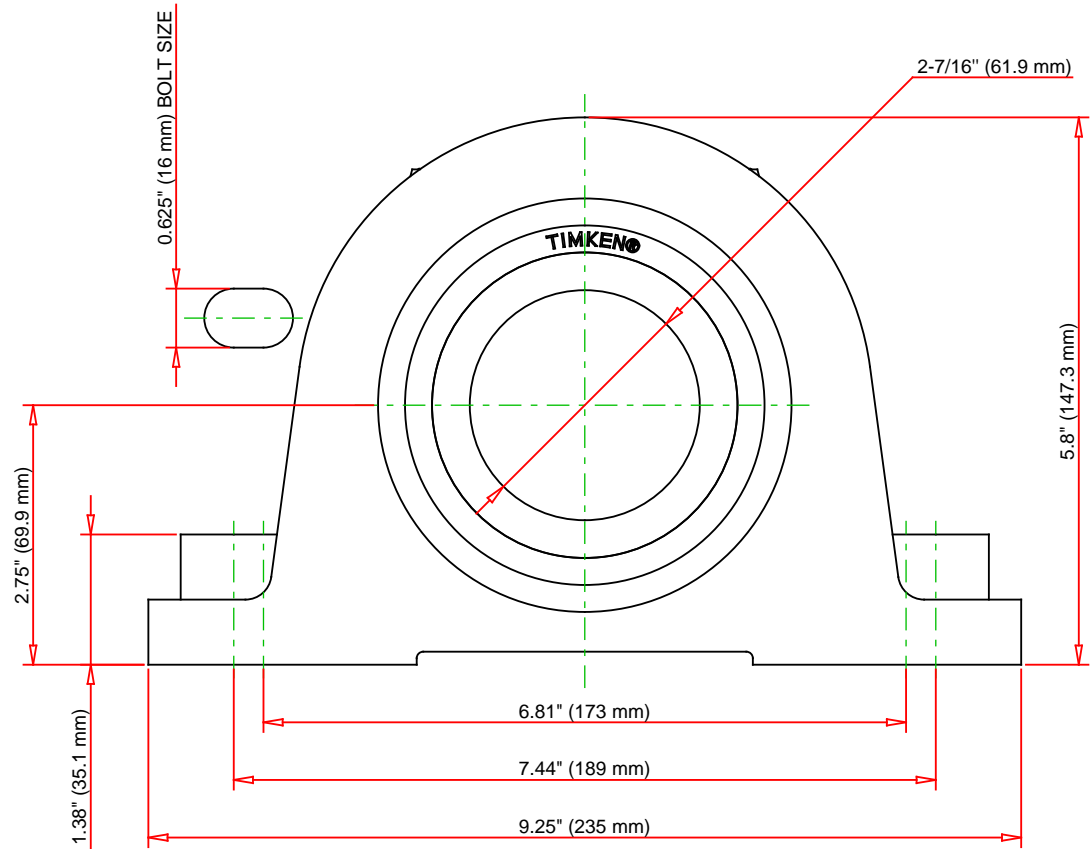
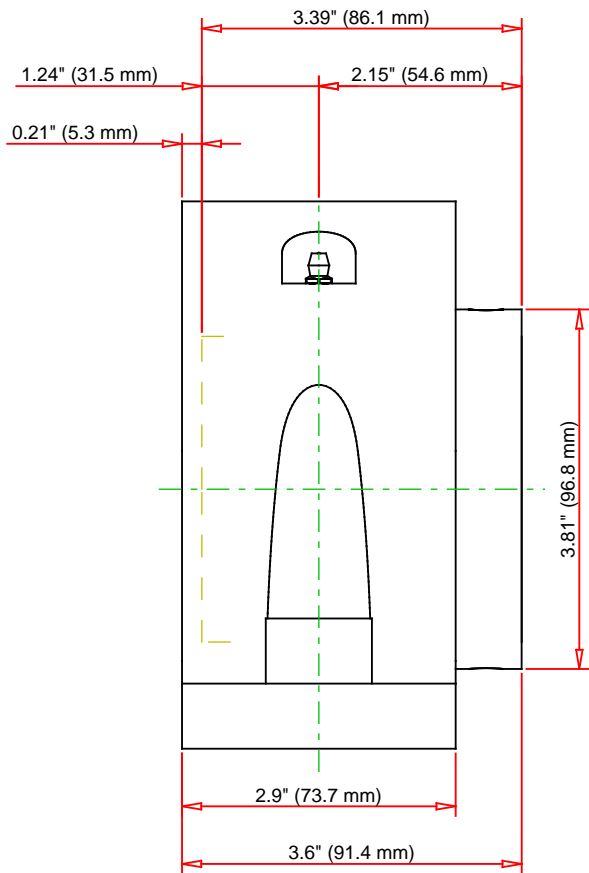
Oil Lubrication - M/N Seal	1800 rpm
Oil Lubrication - T Seal	3200 rpm
Oil Lubrication - B/C/O Seal	1500 rpm
Grease Lubrication - M/N Seal	1800 rpm
Grease Lubrication - T Seal	2800 rpm
Grease Lubrication - B/C/O Seal	1500 rpm

Engineering Bearing Attributes

Float	0.083 in 2.108 mm
Shaft Tolerance	0.0015 in 0.038 mm

Engineering Internal Radial Clearance

Eng Internal Radial Clearance - Min	0.0016
Eng Internal Radial Clearance - Max	0.0026
Pre Install Clearance Min	0.0016 in 0.040 mm
Pre Install Clearance Max	0.0026 in 0.065 mm



Note: Section View not to Scale

C - Dynamic Load	46400	lbf	206000	N
C0 - Static Load	48600	lbf	216000	N
Weight	22	lb	10	kg
Max. Speed T-Seals & Grease	2800	rpm		
Rad. Clearance - Max.	0.0026			

TIMKEN

THE TIMKEN COMPANY
NORTH CANTON, OHIO USA

QAPL13A207S
Single Concentric Two-Bolt Pillow
Block

Every reasonable effort has been made to ensure the accuracy of the information contained in this writing, but no liability is accepted for errors, omissions or for any other reason.

FOR DISCUSSION ONLY